

**NOTES:**

**GENERAL NOTES:**

- DO NOT SCALE DRAWINGS. FIELD VERIFY EXISTING CONDITIONS.
- ALL AREAS ADJACENT TO CONSTRUCTION SHALL REMAIN ACCESSIBLE FOR THE USE AND MEET THE REQUIREMENTS FOR ALL LIFE SAFETY CODES AND A.D.A. ACCESSIBILITY CODES AT ALL TIMES.



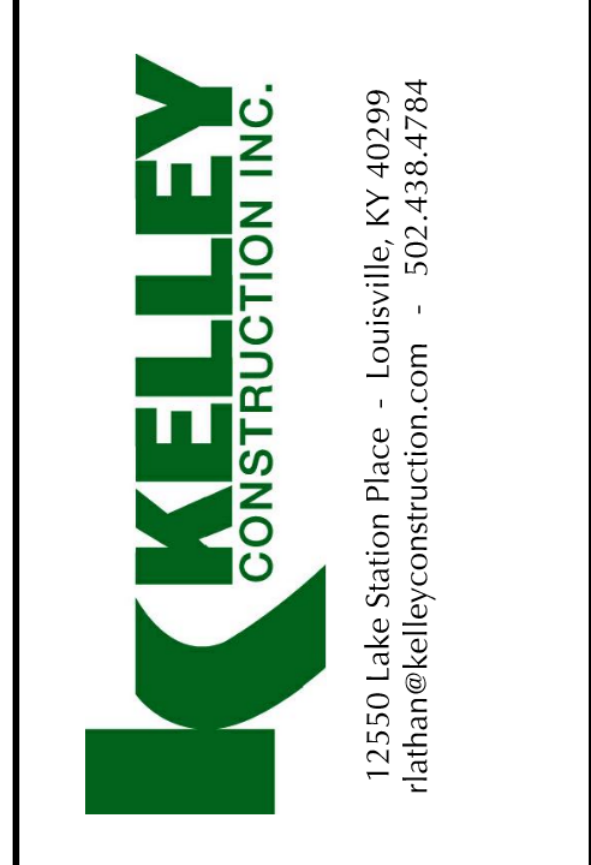
**KEY NOTES:**

08.01 BILCO 36" X 30" TYPE S ROOF HATCH - LADDER ACCESS OR APPROVED EQUAL.

23.01 PROVIDE 10" DEEP BY 13" WIDE X 500'-0" LONG GUTTER WITH EXPANSION JOINTS NOT TO EXCEED 57'-0" O.C.; PROVIDE (20) - 8" SQUARE DOWNSPOUTS AT 34'-0" SPACING MAX; SEE PLAN FOR DOWNSPOUT LOCATIONS.

23.01 CAMBRIDGE AIR SOLUTIONS MODEL S1850 BLOW-THRU SPACE HEATER OR APPROVED EQUAL; SEE MECHANICAL DRAWINGS

23.02 AMERICAN COOLAIR BELT DRIVE UPBLAST POWER ROOF VENTILATOR MODEL JBHX OR APPROVED EQUAL; SEE MECHANICAL DRAWINGS



**NICKLIES ENTERPRISE DRIVE SPEC**

6701 & 6707 ENTERPRISE DRIVE  
LOUISVILLE, KY 40214

**LEGEND:**

- A WALL TYPE
- ## DOOR TYPE
- # GLAZING TYPE
- ##.# KEY NOTE
- D.S. DOWNSPOUT LOCATION

REV	DATE	RELEASED FOR
B	05/13/24	100% CD
A	04/19/24	60% CD

**KEY PLAN:**

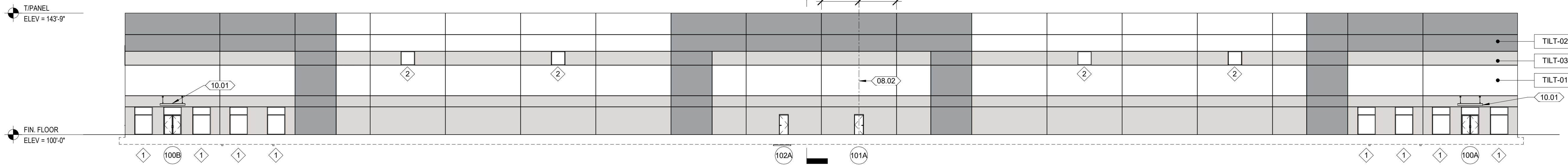
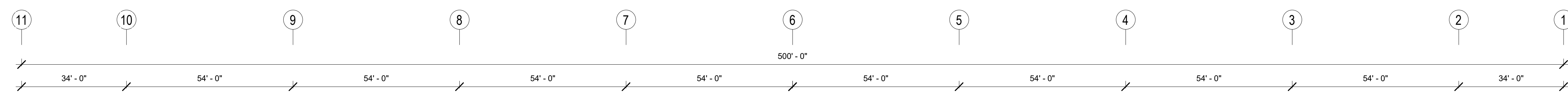
DESIGNED	JTC	PROJECT NUMBER	0126124.00
DRAWN	JTC	DATE	
CHECKED	TKB		04/19/2024

**SHEET TITLE:**

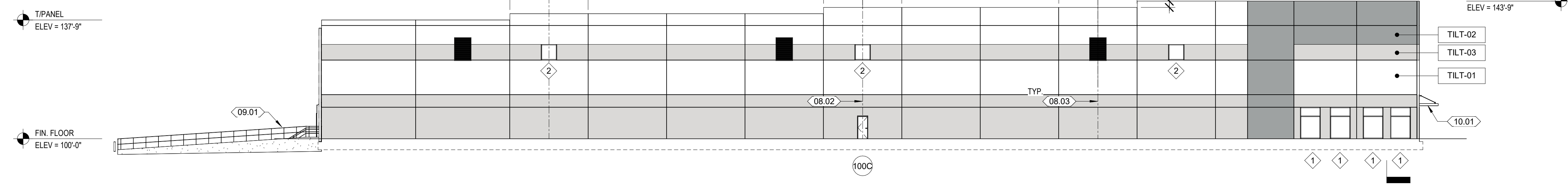
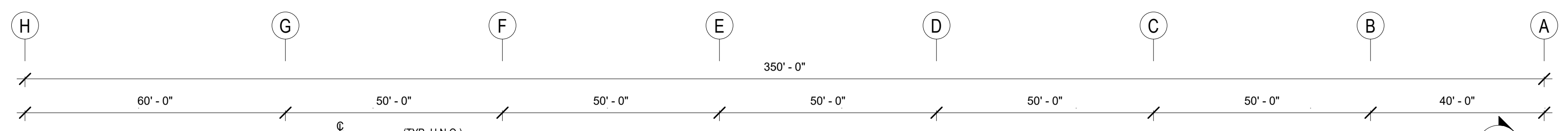
ROOF PLAN AND DETAIL(S)

**SHEET NUMBER:**

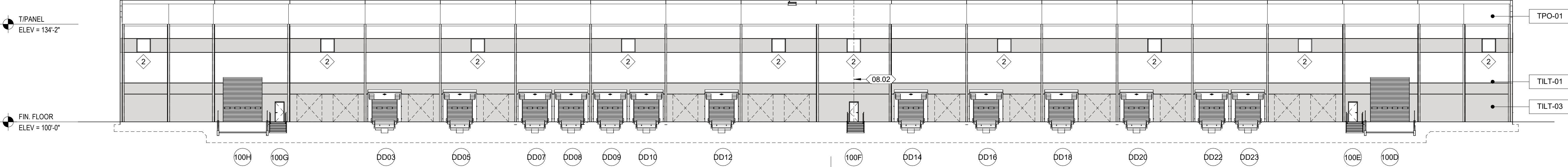
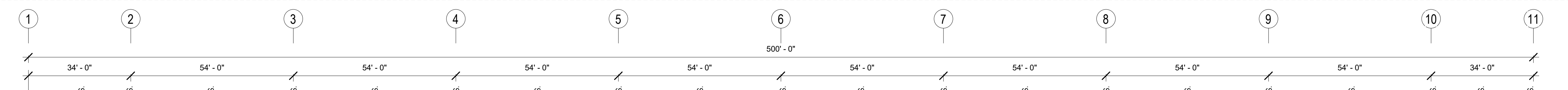
A201



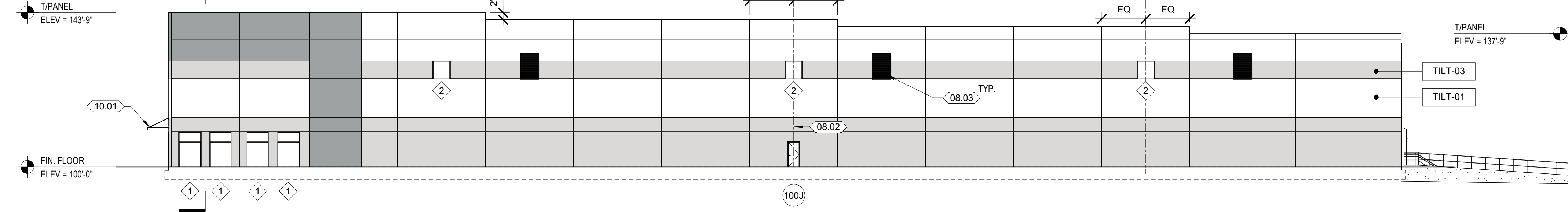
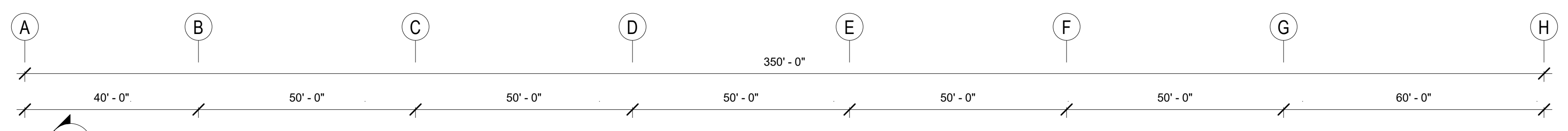
**ELEVATION (NORTH)**  
SCALE: 1" = 20'-0"



**ELEVATION (EAST)**  
SCALE: 1" = 20'-0"



**ELEVATION (SOUTH)**  
SCALE: 1" = 20'-0"



**ELEVATION (WEST)**  
SCALE: 1" = 20'-0"

**NOTES:**

**GENERAL NOTES:**

- DO NOT SCALE DRAWINGS. FIELD VERIFY EXISTING CONDITIONS.
- ALL AREAS ADJACENT TO CONSTRUCTION SHALL REMAIN ACCESSIBLE FOR THE USE AND MEET THE REQUIREMENTS FOR ALL LIFE SAFETY CODES AND A.D.A. ACCESSIBILITY CODES AT ALL TIMES.
- STOREFRONT SYSTEMS AND GLAZING TO BE KAWNEER 451T OR APPROVED EQUAL; FINISH AS SELECTED BY OWNER.

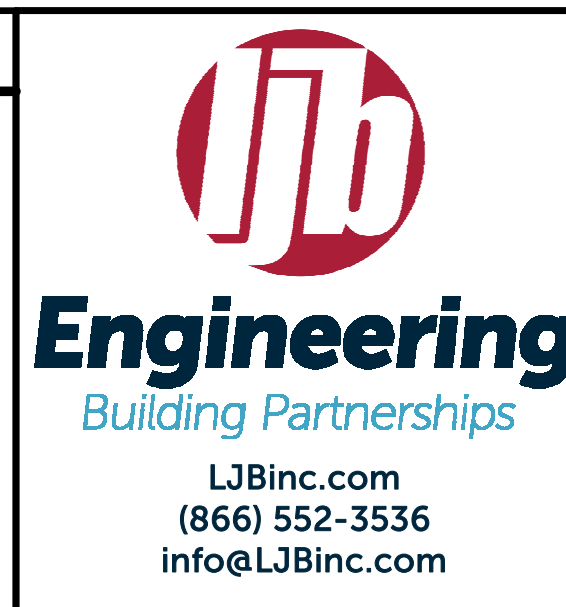
**KEY NOTES:**

- WINDOW TO BE CENTERED WITHIN TILT-UP PANEL UNLESS NOTED OTHERWISE ON ELEVATIONS; SEE "GLAZING TYPES" ON SHEET A601 FOR WINDOW INFORMATION.
- DOOR TO BE CENTERED WITHIN TILT-UP PANEL UNLESS NOTED OTHERWISE ON ELEVATIONS; SEE "DOOR SCHEDULE" ON SHEET A601 FOR DOOR AND FRAME TYPES AS WELL AS HARDWARE INFORMATION.
- 60" X 84" AMERICAN WARMING AND VENTILATING MODEL LE-65C COMBINATION LOUVER OR APPROVED EQUAL LOUVER TO BE CENTERED IN PANEL.
- SIDE MOUNTED GUARDRAIL SYSTEM; SEE SHEET A502 FOR DETAILS.
- MAPES SUPER LUMIDECK FLAT SOFIT CANOPY SYSTEM OR APPROVED EQUAL; SEE SHEET A502 FOR CANOPY DETAILS.

**LEGEND:**

- A WALL TYPE
- ## DOOR TYPE
- # GLAZING TYPE
- ## KEY NOTE
- D.S. DOWNSPOUT LOCATION

**KEY PLAN:**



**NICKLIES ENTERPRISE DRIVE SPEC**

6701 & 6707 ENTERPRISE DRIVE  
LOUISVILLE, KY 40214

REV	DATE	RELEASED FOR
B	05/13/24	100% CD
A	04/19/24	60% CD

DESIGNED	PROJECT NUMBER
JTC	0126124.00

CHECKED	DATE
TKB	04/19/2024

**BUILDING ELEVATION(S)**

**A301**