



# 313-317

## Dickson Street

Houma, Louisiana

**FOR SALE**  
**\$ 2,100,000**

**±20.00 ACRES / ±871,200 SF  
WATERFRONT COMMERCIAL LAND  
ON MUNSON SLIP WITH DIRECT  
ACCESS TO HOUMA NAVIGATION  
CANAL FEEDING THE INTRACOASTAL  
WATERWAY, MISSISSIPPI RIVER, AND  
GULF OF MEXICO**

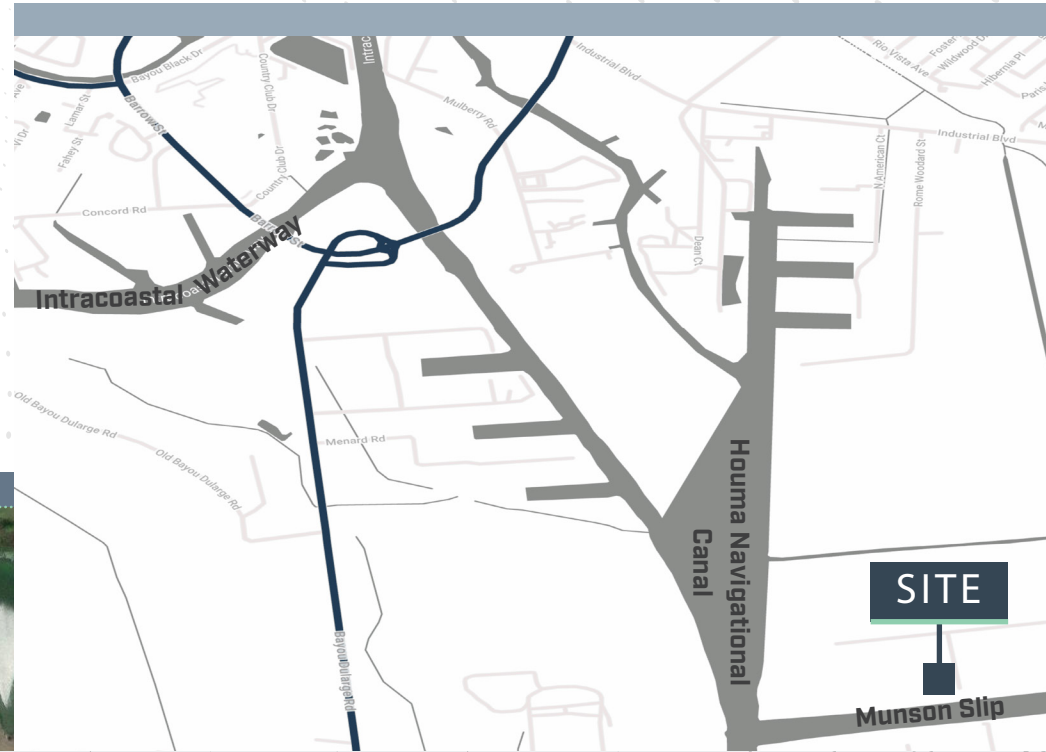
**CBRE**

**Bryce French**  
Senior Vice President  
T 504 427 2090  
bryce.french@cbre.com

**Jack Sikora**  
Senior Associate  
T 205 907 9658  
jack.sikora@cbre.com

# PROPERTY HIGHLIGHTS

Total Acres/SF	±20 acres / ±871,200 SF
Water Frontage	±660 Linear Feet
Dolphins	6 mooring dolphins in place



DIRECT FRONTAGE ON MUNSON SLIP THAT FEEDS HOUMA NAVIGATION CANAL AND FEEDS THE INTRACOASTAL WATERWAY

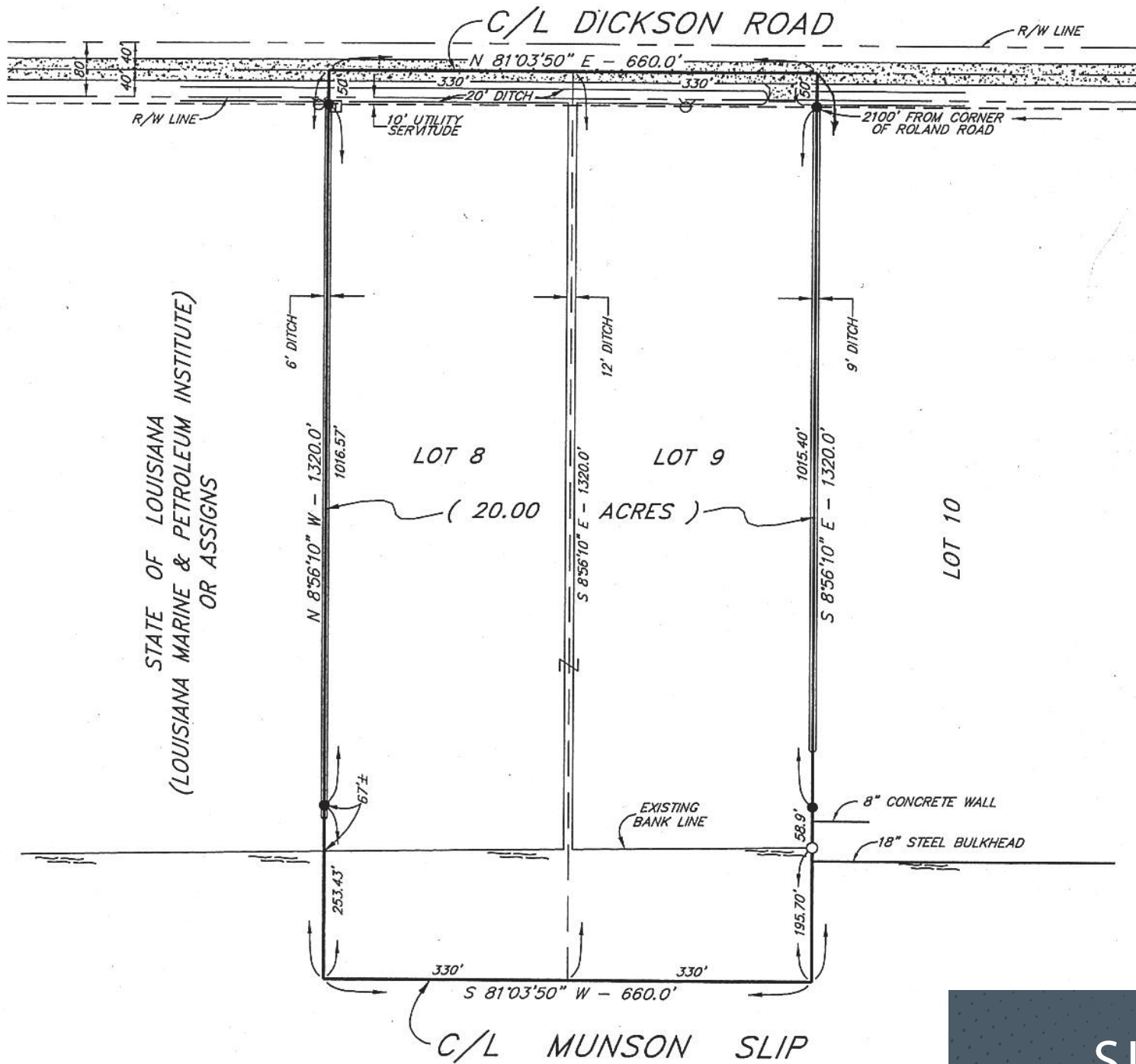


±660 LINEAR FEET OF WATER FRONTAGE WITH 6 MOORING DOLPHINS IN PLACE



IMPROVED WITH ROAD, 1/2 ACRE STABILIZED YARD, MOORING DOLPHINS, AND GATED FENCE FRONTING DICKSON RD





**SURVEY**





INTRACOASTAL  
WATERWAY  
±2 MILES

HOUMA NAVIGATION CANAL

DICKSON ROAD

MUNSON SLIP

Reliant Recycling

Baker Hughes

LaShip

313 & 317  
dickson road

Offshore Energy

Bollinger Shipyard

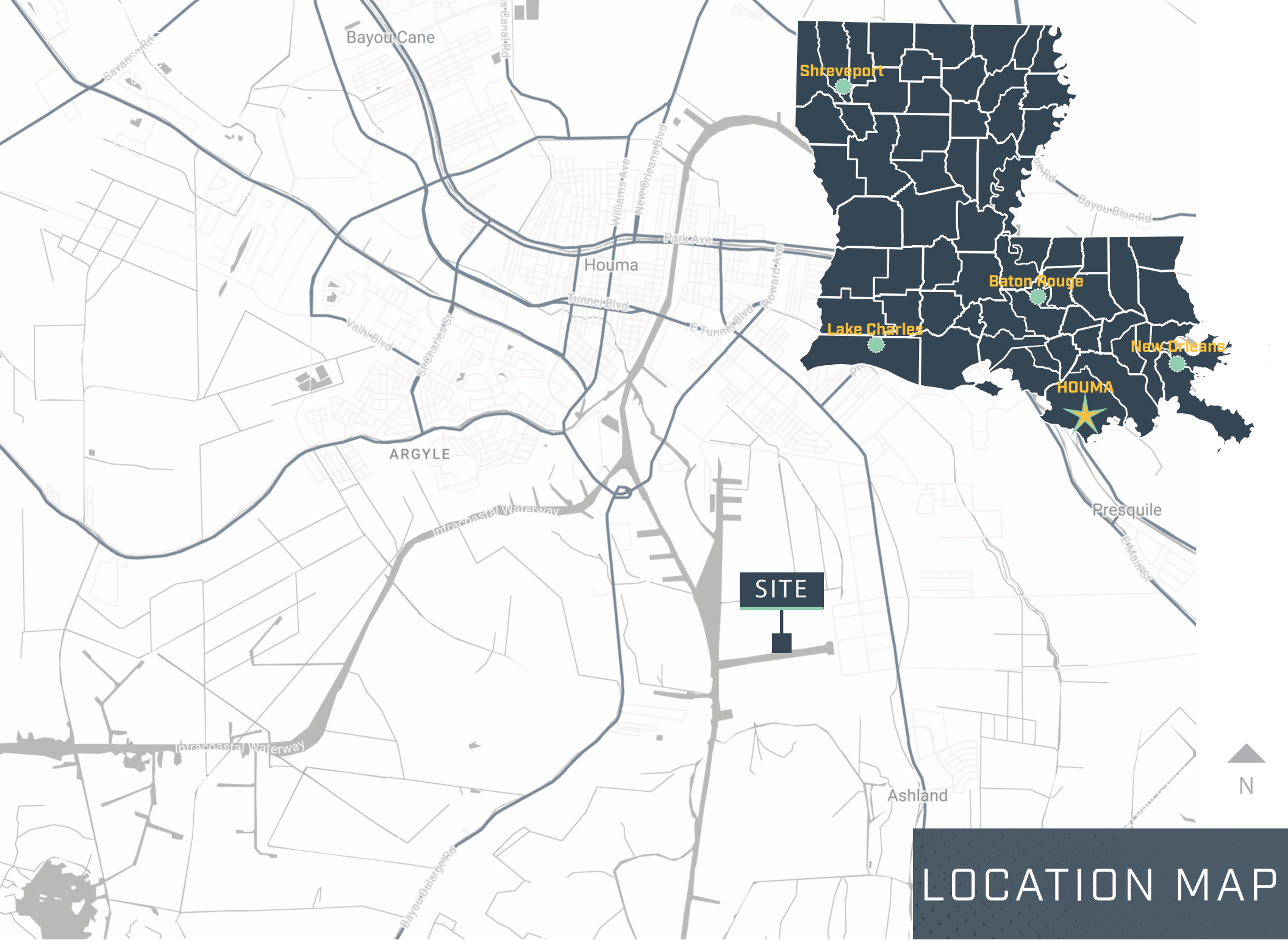
Bordelon

GulfIsland

GulfIsland

AERIAL





# LOCATION MAP

# 313-317

Dickson Street

**FOR SALE**  
**\$ 2,100,000**

**±20.00 ACRES / ±871,200 SF**  
**WATERFRONT COMMERCIAL LAND ON**  
**MUNSON SLIP WITH DIRECT ACCESS TO**  
**HOUMA NAVIGATION CANAL FEEDING THE**  
**INTRACOASTAL WATERWAY, MISSISSIPPI**  
**RIVER, AND GULF OF MEXICO**



**MUNSON SLIP - LOCATED**  
**BETWEEN MILE MARKER**  
**35 & 34 ON HOUMA**  
**NAVIGATION CANAL**

**Bryce French**  
Senior Vice President  
+1 504 427 2090  
bryce.french@cbre.com

**Jack Sikora**  
Senior Associate  
+1 205 907 9658  
jack.sikora@cbre.com

**CBRE**

© 2024 CBRE, Inc. All rights reserved. This information has been obtained from sources believed reliable but has not been verified for accuracy or completeness. You should conduct a careful, independent investigation of the property and verify all information. Any reliance on this information is solely at your own risk. CBRE and the CBRE logo are service marks of CBRE, Inc. All other marks displayed on this document are the property of their respective owners, and the use of such logos does not imply any affiliation with or endorsement of CBRE. Photos herein are the property of their respective owners. Use of these images without the express written consent of the owner is prohibited.