



RETAIL/OFFICE

330 DIVISADERO STREET

FORMER MEDICAL CLINIC FOR SUBLEASE

maven
RETAIL



Ground Level: 1,815 SF

Lower Level: 1,733 SF

FEATURES

- Situated along the high traffic Divisadero corridor
- Multiple treatment rooms
- Shared backyard
- Ideal for a medical spa, clinic, wellness center, or various other businesses
- Nearby businesses include Sightglass Coffee, Mangrove Kitchen, Ragazza, Ritual Nail Bar, Wheelhouse Clay Studio, Modern Animal, Madrone Art Bar, Nopalito, The Page, The Little Chihuahua, Souvenir Coffee, and many more







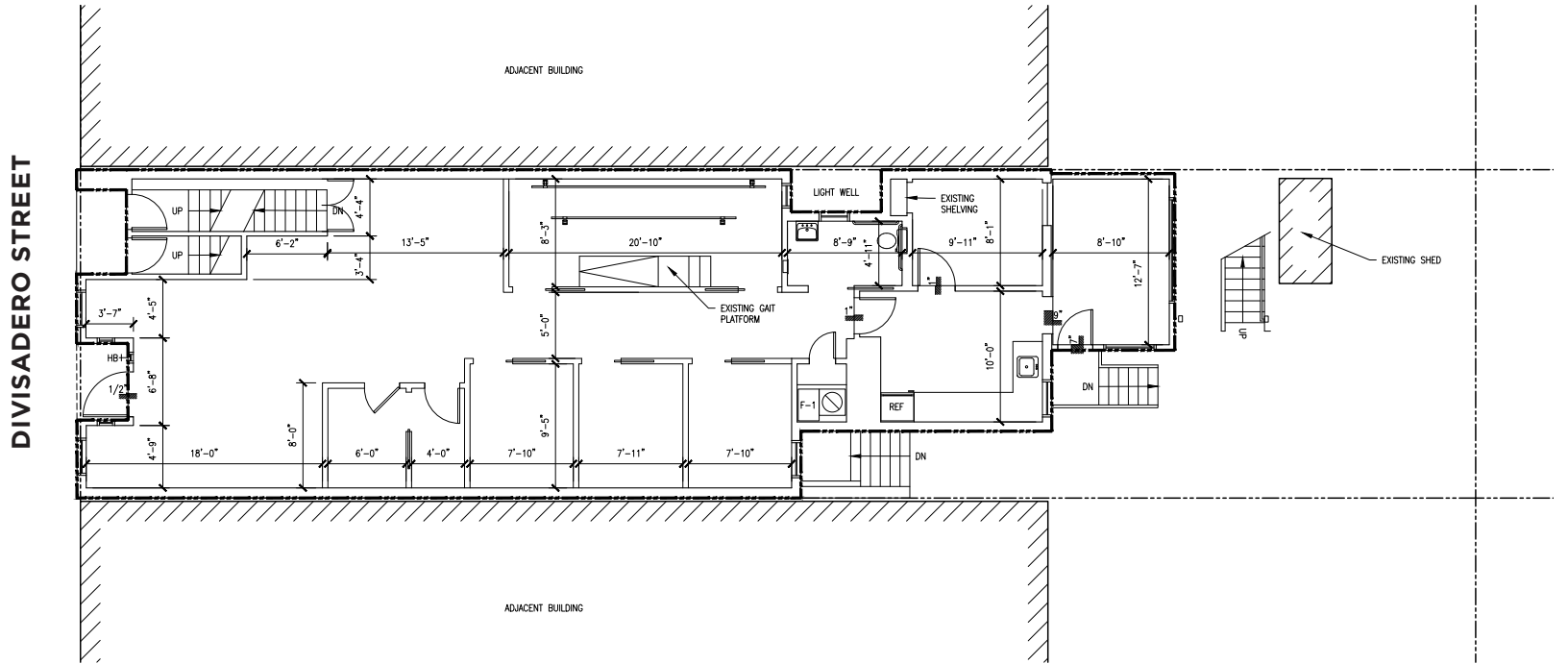
330 Divisadero Street presents an exceptional opportunity for sublease, offering a former medical clinic space perfectly situated along the bustling Divisadero corridor. With a total area spanning 1,815 square feet on the ground floor and an additional 1,733 square feet on the lower level, this property boasts ample space for various business needs. Featuring multiple treatment rooms, the layout is well-suited for medical practices or adaptable to a range of other uses. The property offers the added benefit of a shared backyard, providing a tranquil outdoor space for employees to enjoy.

FEATURES

Strategically located amidst high foot and vehicle traffic, this property enjoys excellent visibility and accessibility, making it an ideal location for businesses seeking maximum exposure. Nearby establishments such as Sightglass Coffee, Mangrove Kitchen, and Ragazza contribute to the vibrant atmosphere of the area, drawing in diverse clientele and fostering a thriving community.

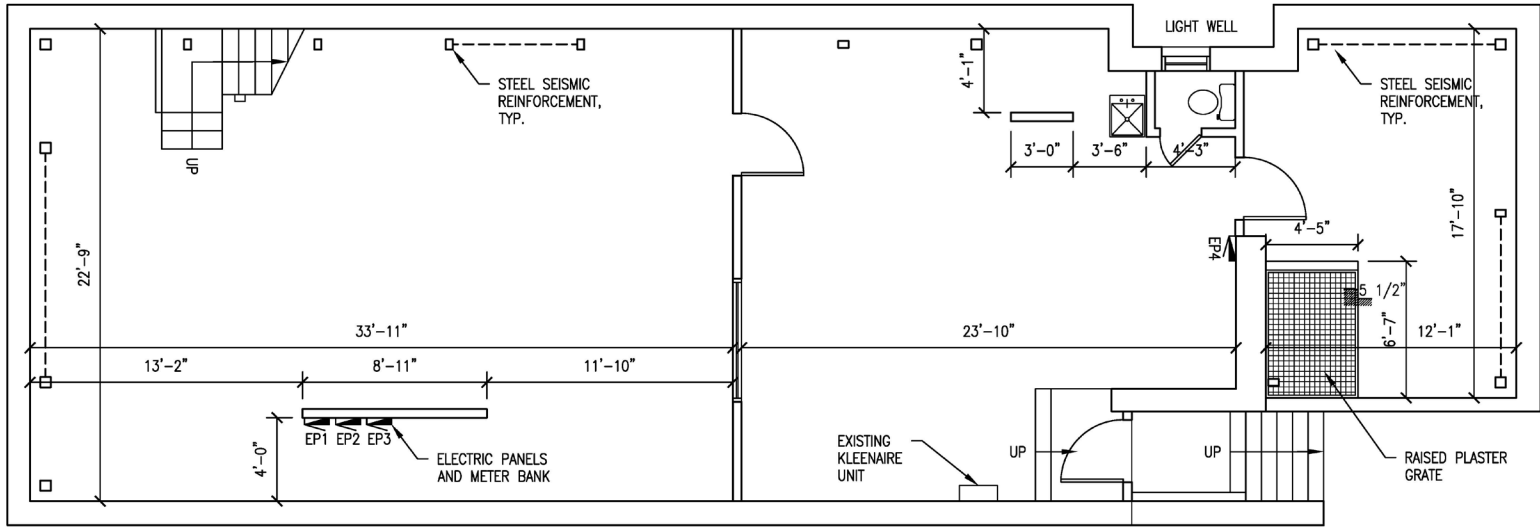
FLOOR PLAN

GROUND LEVEL



FLOOR PLAN

BASEMENT



LOWER HAIGHT

DIVISADERO

330
DIVISADERO

MARKET



Walk/Bike/Transit Score

99	89	88
WALK SCORE	BIKE SCORE	TRANSIT SCORE

BUS LINES: 6, 7, 21, 22, 24

- AUTOMAT ▶
- RAGAZZA ▶
- EL RANCHO GRANDE ▶
- JU-NI ▶
- 4505 ▶
- BERETTA ▶
- BAR CRUDO ▶
- SOUVLA ▶
- THE PANHANDLE ▶
- PEET'S COFFEE ▶
- NOPALITO ▶
- BELUNA ▶
- SIGHTGLASS COFFEE ▶
- WHOLESOME BAKERY ▶
- THE LITTLE CHIHUAHUA ▶
- POWDER ▶
- THE GRIND ▶
- GROOVE MERCHANT RECORDS ▶
- CAFE RÉVEILLE ▶
- LE CAFE DU SOLEIL ▶
- THE DETOUR ▶
- THOROUGH BREAD & PASTRY ▶
- THE FICO ▶
- EDDIE'S CAFE ▶
- THE MILL ▶
- THE INDEPENDENT ▶
- EMPORIUM ▶
- RARE DEVICE ▶
- NOPA ▶
- HORSEFEATHER ▶
- MADRONE ▶
- ALAMO SQUARE ▶
- LADY FALCON ▶
- COFFEE CLUB ▶
- ALAMO SQUARE SEAFOOD GRILL ▶
- ALAMO SQUARE CAFE ▶
- BEANSTALK CAFE ▶
- PALMYRA ▶
- OTRA ▶
- DANNY COYLE'S ▶
- MEMPHIS MINNIE'S ▶
- NARA ▶
- NO C NOC ▶
- TORONADO ▶
- IZA RAMEN ▶
- KATE'S KITCHEN ▶
- ROOKY RICARDO'S ▶
- BEIT RIMA ▶
- WOODEN SPOON ▶
- WILLKOMMEN ▶

GOLDEN GATE
MCCALLISTER
FULTON
GROVE
HAYES
FELL
OAK
PAGE
HAIGHT
WALLER
DUBOCE
14TH
HENRY
15TH

BAKER
BRODERICK
SCOTT
PIERCE
STEINER
FILLMORE
WEBSTER

GOLDEN GATE
MCCALLISTER
FULTON
GROVE
HAYES
FELL
OAK





BERETTA



KATE'S KITCHEN



RAGAZZA



MANGROVE KITCHEN



SIGHTGLASS COFFEE



NOPALITO



SCHLOK'S BAGEL



OTRA



HORSEFEATHER

LOWER HAIGHT

The Lower Haight is a diverse area known for its vibrantly eclectic and laid-back personality.

330 Divisadero Street is located in the Lower Haight neighborhood. The Lower Haight in San Francisco is a small, local neighborhood just to the east of the famous Haight-Ashbury District. It offers a dense urban feel, plus plenty of beautiful Victorian homes, colorful street art, and a quieter, more residential feel. Haight Street is the neighborhood's commercial center, full of a diverse assortment of shops, eateries, cafes, record stores, and more. The ultra-walkable Lower Haight sits near Market Street's Safeway and Whole Foods Market, as well as Hayes Valley and Divisadero Street's hot spots.



Contact

JOAN RUYLE

office 415.404.7313

joan@mavenproperties.com

DRE #02006025

DOMINIC MORBIDELLI

office 415.404.7314

dom@mavenproperties.com

DRE #02024348

NOTICE: This information has been secured from sources we believe to be reliable but we make no representations, warranties, express or implied, as to the accuracy of the information. Listing broker has been given enough information to provide only a preliminary interest in the property. The materials are not to be considered fact. The information contained herein is not a substitute for thorough due diligence investigation. References to square footage, zoning, use, or age are approximate. Please contact the San Francisco Planning Department to verify zoning at (415) 558-6378, as neither broker or landlord represent that this space is suitable for your use. Tenant or Buyer must verify the information at their own expense and bears all the risk for any inaccuracies. By receiving these materials you are agreeing to the disclaimers set forth herein. DRE#01878802

466 Green Street Suite #203

San Francisco, CA 94133

415-781-770

www.mavenproperties.com