

SALE

Brookwood Ct Development Land

932 W BROOKWOOD

New Haven, IN 46774

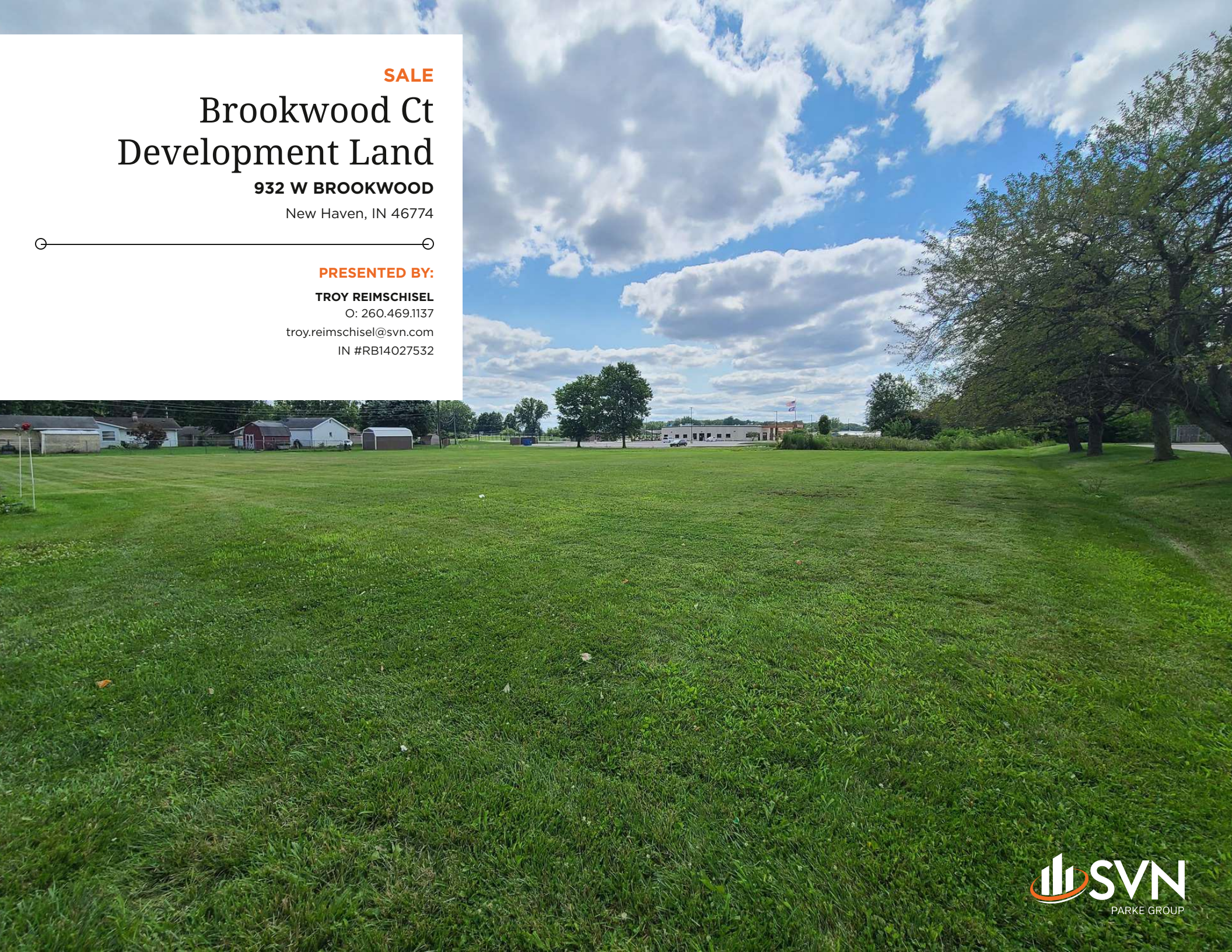
PRESENTED BY:

TROY REIMSCHISEL

O: 260.469.1137

troy.reimschisel@svn.com

IN #RB14027532



PROPERTY SUMMARY



OFFERING SUMMARY

SALE PRICE:	\$150,000
LOT SIZE:	1.5 Acres
PRICE / ACRE:	\$100,000
ZONING:	C-3 General Commercial
APN:	02-12-32-276-001.003-074 02-12-32-276-001.006-074

PROPERTY OVERVIEW

Approximately 1.5 acres (pending a survey and reparcel) of land zoned C-3. Perfect opportunity for a multi-family or town home development or an ideal location in the heart of New Haven for an office or retail user. Adjacent triplex could be sold with land. Ask Broker for price/details. This property is located next to the New Haven Community Center which includes an outdoor plaza, playground, and splash pad among other amenities. It's also within walking distance of a grocery and many restuarants.

PROPERTY HIGHLIGHTS

- Prime location
- Zoning includes many possible uses
- Many amenities within walking distance

TROY REIMSCHISEL
O: 260.469.1137
troy.reimschisel@svn.com
IN #RB14027532

AERIAL



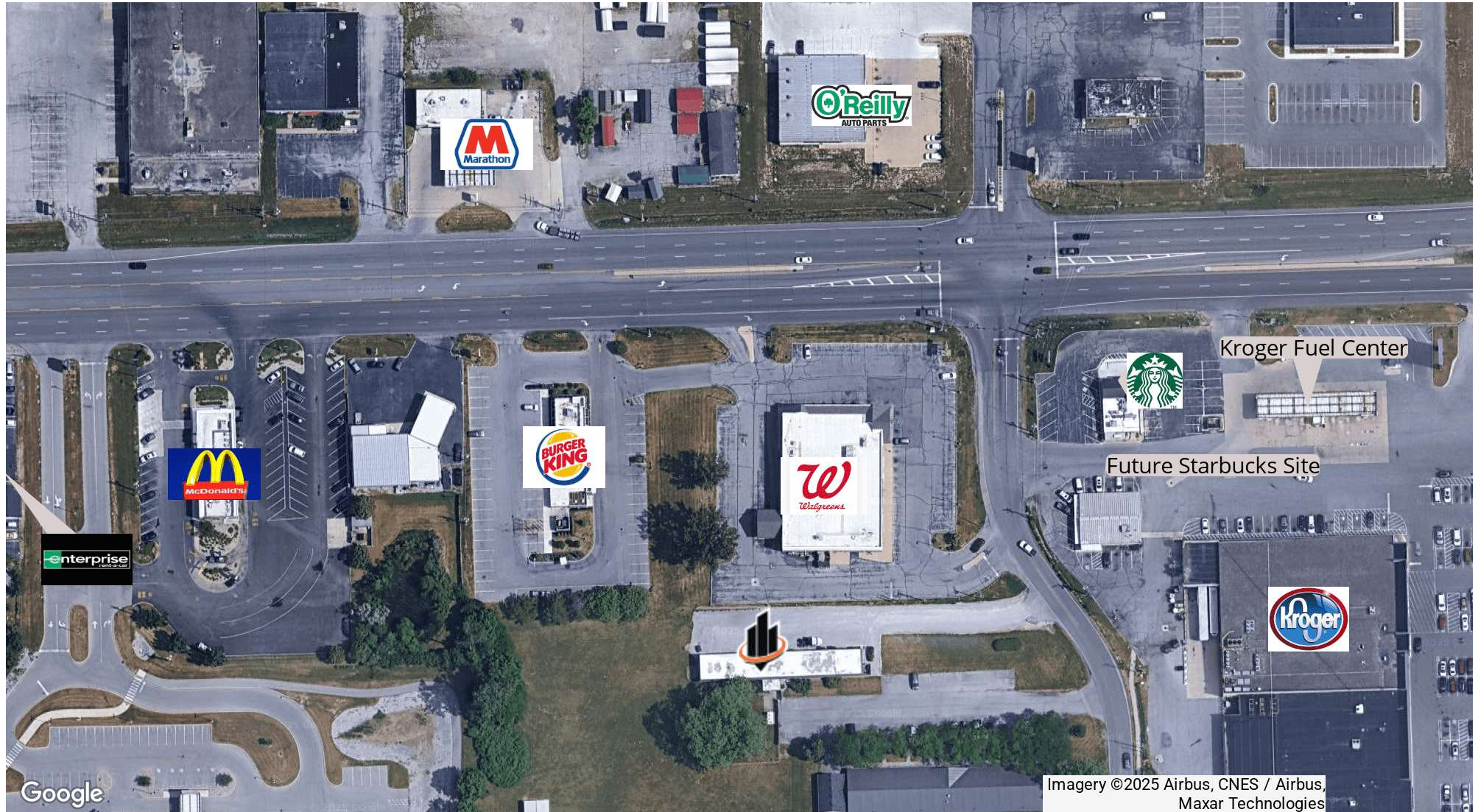
TROY REIMSCHISEL

O: 260.469.1137

troy.reimschisel@svn.com

IN #RB14027532

RETAILER MAP



TROY REIMSCHISEL

O: 260.469.1137

troy.reimschisel@svn.com

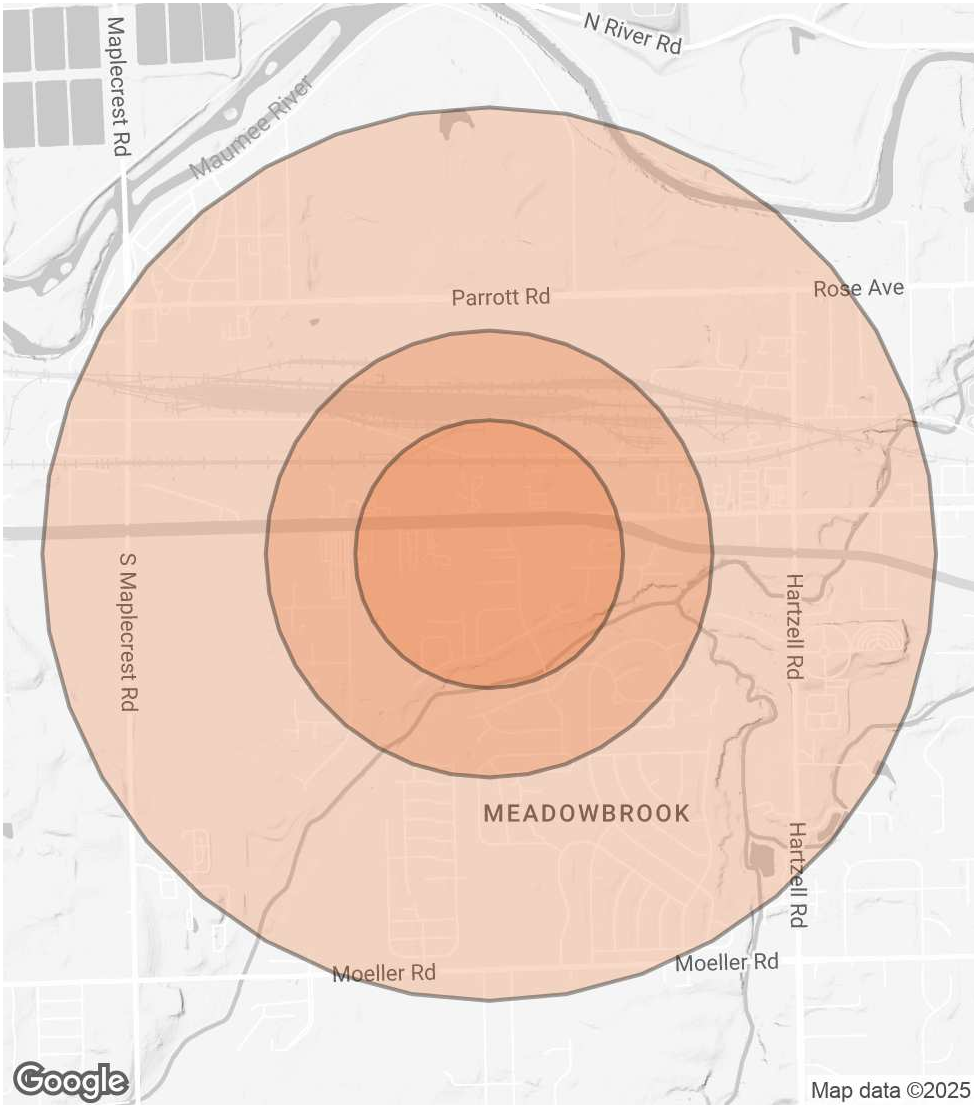
IN #RB14027532

DEMOGRAPHICS MAP & REPORT

POPULATION	0.3 MILES	0.5 MILES	1 MILE
TOTAL POPULATION	366	978	3,568
AVERAGE AGE	40	40	40
AVERAGE AGE (MALE)	39	39	39
AVERAGE AGE (FEMALE)	41	41	41

HOUSEHOLDS & INCOME	0.3 MILES	0.5 MILES	1 MILE
TOTAL HOUSEHOLDS	151	403	1,478
# OF PERSONS PER HH	2.4	2.4	2.4
AVERAGE HH INCOME	\$68,566	\$64,604	\$64,373
AVERAGE HOUSE VALUE	\$171,228	\$162,898	\$165,232

Demographics data derived from AlphaMap



TROY REIMSCHISEL
O: 260.469.1137
troy.reimschisel@svn.com
IN #RB14027532

MEET THE TEAM



TROY REIMSCHISEL
Managing Director

troy.reimschisel@svn.com
260.615.8874
IN #RB14027532

Troy Reimschisel serves as a Managing Director for SVN | Parke Group Fort Wayne specializing in the sale and acquisition of multifamily/investment properties with 20 + years of commercial real estate experience. Troy has earned the respect of clients, colleagues, peers and industry leaders for his dedicated commitment to always seek his clients' best interest and to treat colleagues and others with respect.



JENNA MERRYMAN
Licensed Broker Assistant

jenna.merryman@svn.com
260.489.8500
IN #RB19002137

Jenna Merryman is a Broker Associate/Transaction Coordinator. She graduated with a degree in General Studies with an emphasis in marketing and professional writing, which she utilized in the education and NPO industries before joining the SVN | Parke Group team. Jenna focuses on research, lead tracking/follow-up, operations, and marketing.

TROY REIMSCHISEL

O: 260.469.1137
troy.reimschisel@svn.com
IN #RB14027532