



GROUND FOR THE GROUNDBREAKERS

Dynamic buildings attract dynamic people. And when dynamic people work together, companies thrive.



BUILDING CULTURE



15 KINGS GRANT

15 KINGS GRANT DRIVE | BALA CYNWYD, PA

Getting in on the ground floor starts with finding the perfect ground. City Avenue, Philadelphia's premier sub-market, offers quick access to Center City without the city's tax structure. Redevelopment plans for 15 Kings Grant are underway, allowing you an opportunity to customize your headquarters and unlock the full potential of your business.



WORKING PARTNER

When you sign a lease with Keystone, we're more than tenant and landlord—we're partners. We make sure your building is working its hardest to help you succeed, and we give you the support structure and flexibility to flourish.



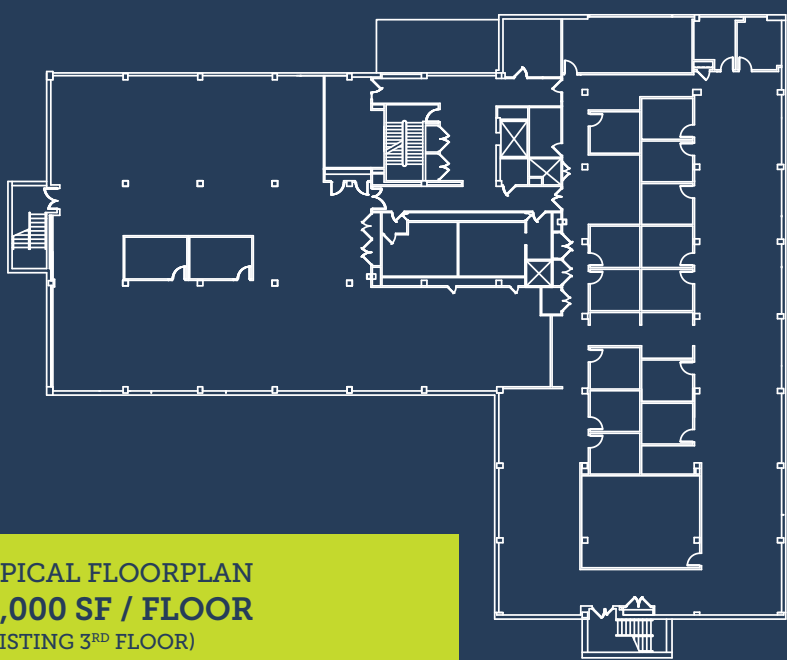
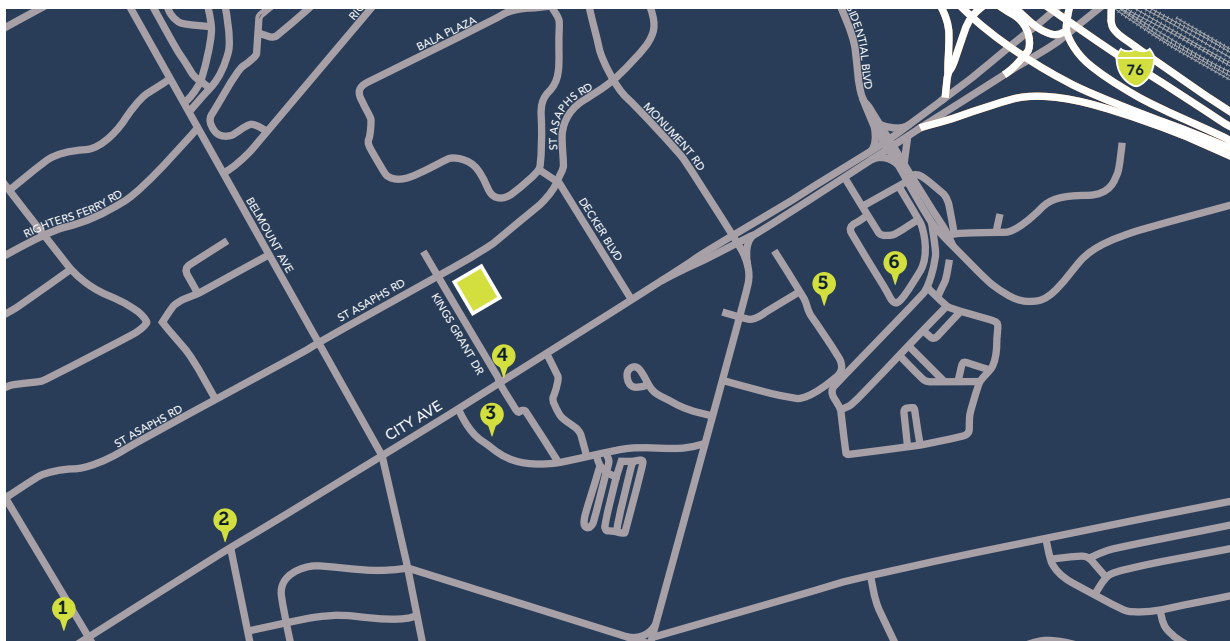
DEFINING FEATURES:

DEVELOPMENT FEATURES

- Modern exterior with expansive glass lines
- Impressive, two-story atrium entrance
- Three stories comprising 57,000 SF of open, customizable space
- State-of-the-art technology and energy efficient systems
- Bi-level, 250-space parking garage

LOCATION

- 1 Less than 1 mile to Septa's Cynwyd Station for service to Center City Philadelphia
- 2 Bala Cynwyd Shopping Center: Honeygrow, Chili's, Qdoba, Corner Bakery, Acme
- 3 Hilton Philadelphia City Avenue
- 4 1 block to Septa Bus Routes 1, 44 & 65
- 5 Target Shopping Center: Target, Starbucks, California Pizza Kitchen, Chipotle, Pei Wei Asian Diner, PNC Bank, TD Bank
- 6 Crowne Plaza Philadelphia West
- 7 miles to Center City Philadelphia via 76



TYPICAL FLOORPLAN
19,000 SF / FLOOR
(EXISTING 3RD FLOOR)



For further information, please call SCOTT PAYMER at (610) 980-7000 or email spaymer@keystonepropertygroup.com

keystonepropertygroup.com



BUILDING CULTURE