

AVAILABILITY:

Warehouse (Building III)

Bay B

- 900 SF
- \$19.00/NNN

Outdoor Storage Available

- \$4.00/SF
- 25,912 SF Available OR
- 42 parking spaces @ \$200/month per space

PROPERTY FEATURES:

- Less than 1 mile to Dulles Airport
- Ready to move-in
- PD-GI zoning
- At grade drive-ins

FLOOR PLAN

105 EXECUTIVE DRIVE

105 EXECUTIVE DRIVE, STERLING, VIRGINIA 20166

OUTDOOR STORAGE | 25,912 SF



RYAN GOELLER, CCIM

rgoeller@klnb.com | 703-268-2731

CHASE STEWART

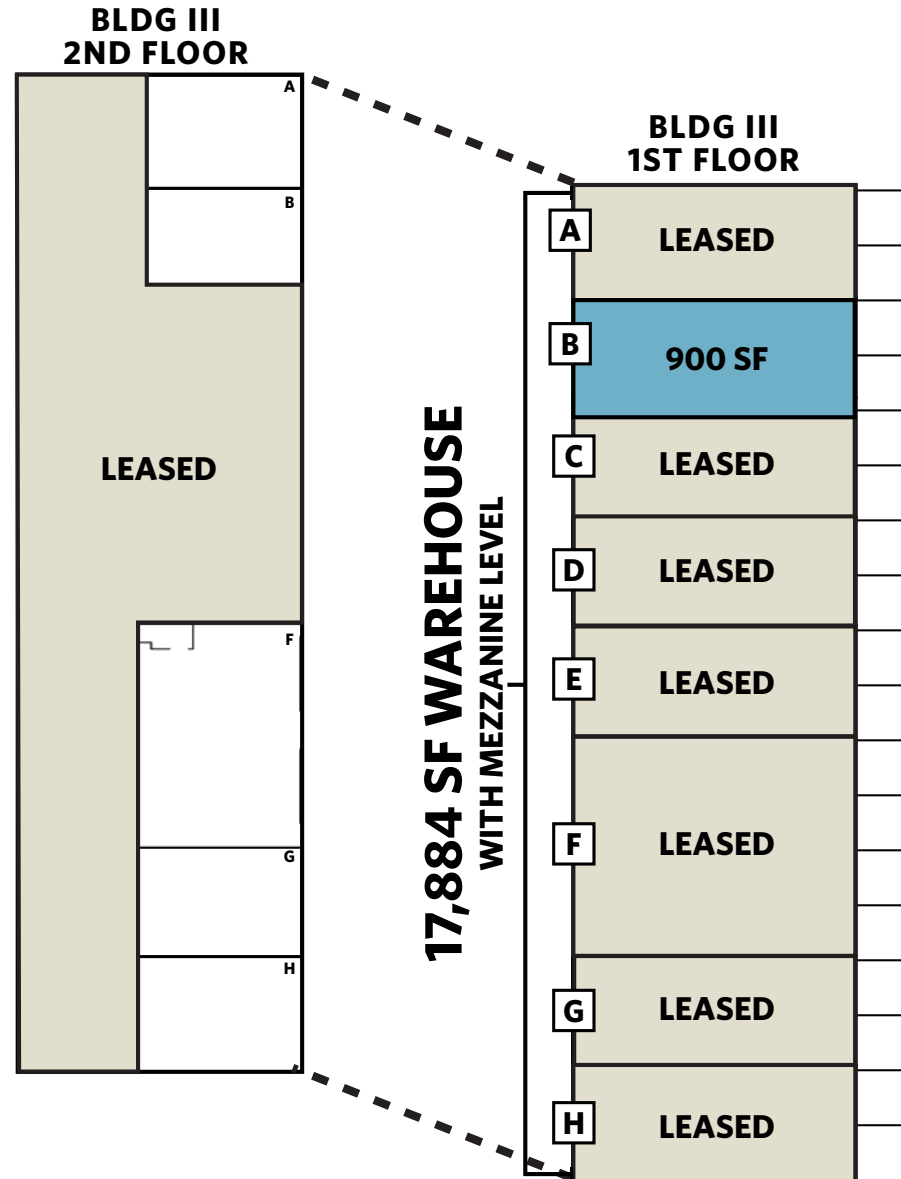
cstewart@klnb.com | 703-268-2732

JEFF TARAE

jtarae@klnb.com | 703-268-2741

NAI klnb

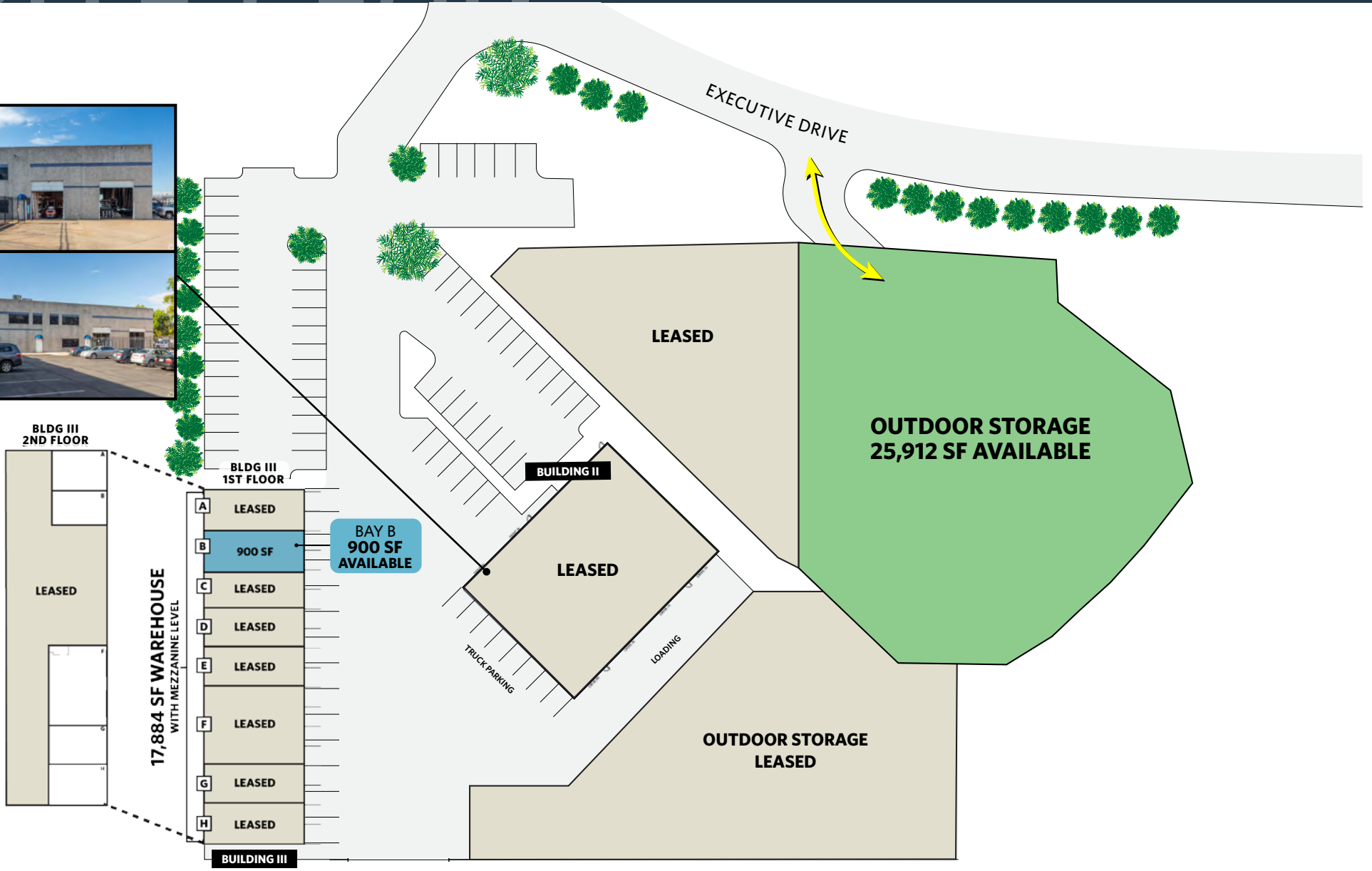
BUILDING III - BAY B | 900 SF



SITE PLAN

105 EXECUTIVE DRIVE

105 EXECUTIVE DRIVE, STERLING, VIRGINIA 20166



RYAN GOELLER, CCIM

rgoeller@klnb.com | 703-268-2731

CHASE STEWART

cstewart@klnb.com | 703-268-2732

JEFF TARAE

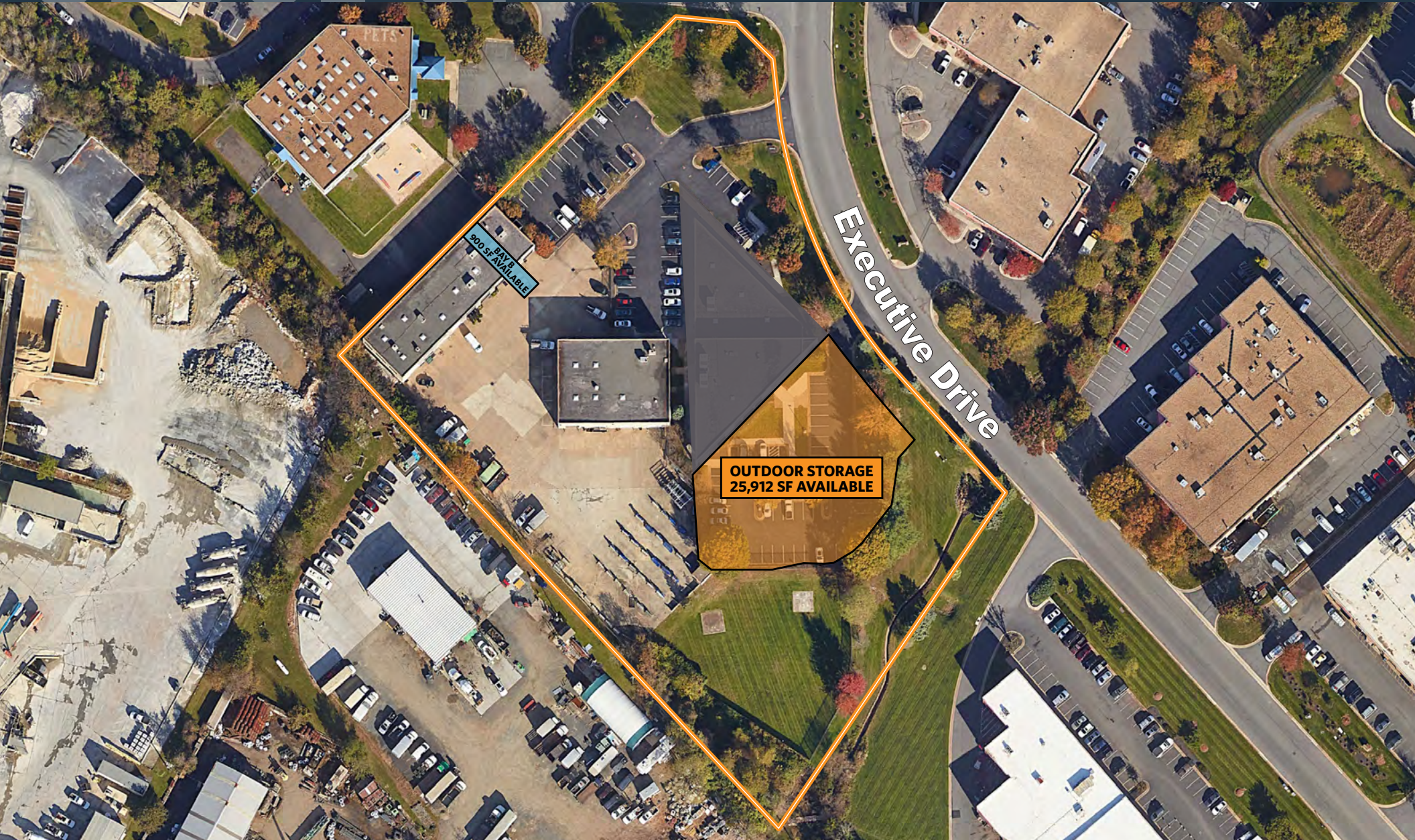
jtarae@klnb.com | 703-268-2741



CLOSE UP

105 EXECUTIVE DRIVE

105 EXECUTIVE DRIVE, STERLING, VIRGINIA 20166



RYAN GOELLER, CCIM

rgoeller@klnb.com | 703-268-2731

CHASE STEWART

cstewart@klnb.com | 703-268-2732

JEFF TARAE

jtarae@klnb.com | 703-268-2741

NAI klnb

FOR MORE INFORMATION, PLEASE CONTACT:

RYAN GOELLER, CCIM

rgoeller@klnb.com | 703-268-2731

CHASE STEWART

cstewart@klnb.com | 703-268-2732

JEFF TARAE

jtarae@klnb.com | 703-268-2741

8065 Leesburg Pike, Suite 700, Tysons, VA 22182



klnb.com



[instagram.com/klnbcre](https://www.instagram.com/klnbcre)



[linkedin.com/company/klnb](https://www.linkedin.com/company/klnb)



[facebook.com/KLNB](https://www.facebook.com/KLNB)

CLICK TO VIEW PROPERTY WEBSITE