

# LAND AVAILABLE FOR BUILD-TO-SUIT

## I-90 AND IL ROUTE 23

MARENGO, IL 60152



### PROPERTY SPECIFICATIONS:

|            |   |
|------------|---|
| LAND SIZE: | 169.7 Acres   |
| ZONED:     | Marengo's future comprehensive plan calls for Industrial Zoning |
| COUNTY:    | McHenry   |
| PRICE:     | Subject to Offer  |

### HIGHLIGHTS

- Available for build-to-suit
- Frontage on both eastbound and westbound I-90 Tollway
- City of Marengo supports a wide variety of uses
- Over 56,000 Vehicles Per Day
- Brand new full interchange at I-90 and Route 23
- Low McHenry County real estate taxes
- Fully divisible



**Jeff Provenza**  
Principal  
jprovenza@lee-associates.com  
C 630.747.6350

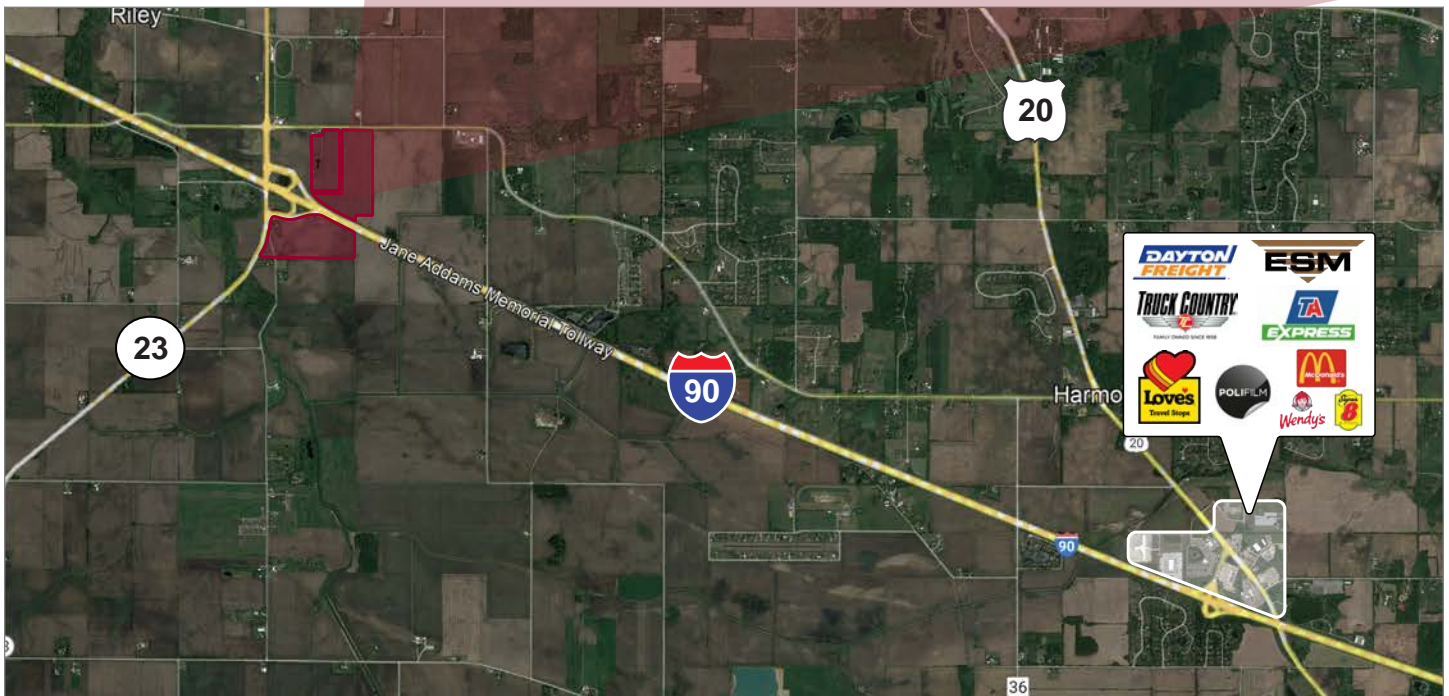
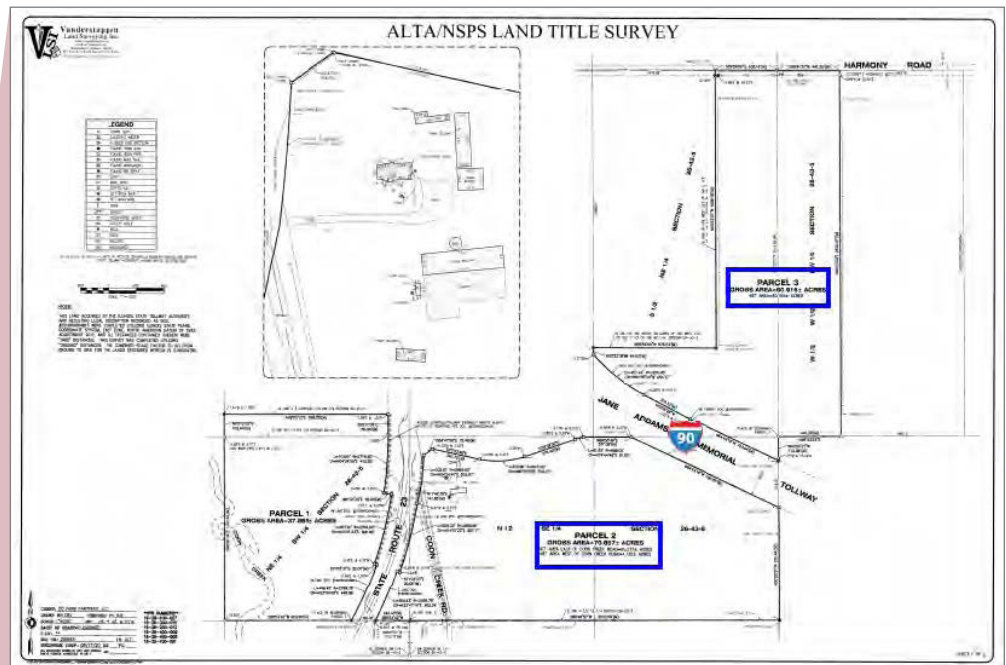
**Todd Hendricks**  
Senior Vice President  
thendricks@lee-associates.com  
C 847.912.2739

All information furnished regarding property for sale, rental or financing is from sources deemed reliable, but no warranty or representation is made to the accuracy thereof and same is submitted to errors, omissions, change of price, rental or other conditions prior to sale, lease or financing or withdrawal without notice. No liability of any kind is to be imposed on the broker herein. Listing broker has an ownership interest in the property.

# LAND AVAILABLE FOR BUILD-TO-SUIT

## I-90 AND IL ROUTE 23

MARENGO, IL 60152



**Jeff Provenza**  
Principal  
jprovenza@lee-associates.com  
C 630.747.6350

**Todd Hendricks**  
Senior Vice President  
thendricks@lee-associates.com  
C 847.912.2739

All information furnished regarding property for sale, rental or financing is from sources deemed reliable, but no warranty or representation is made to the accuracy thereof and same is submitted to errors, omissions, change of price, rental or other conditions prior to sale, lease or financing or withdrawal without notice. No liability of any kind is to be imposed on the broker herein. Listing broker has an ownership interest in the property.