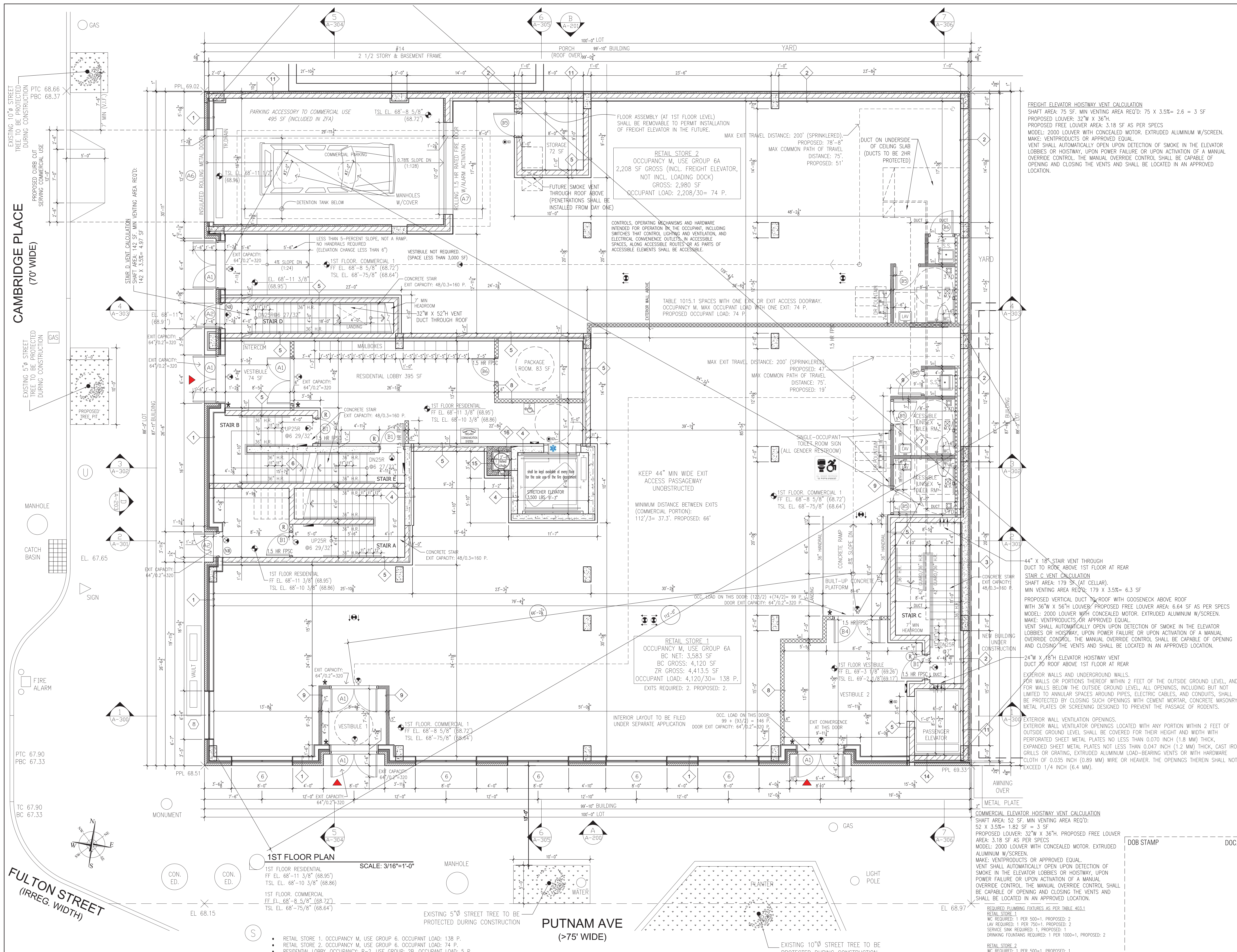


NEW 8-STORY & CELLAR MIXED USE BUILDING 1 PUTNAM AVENUE, BROOKLYN NY 11238

It is a violation of the law for any person, unless acting under the direction of a licensed architect, to alter an item in any way.

REVISIONS

#	Date	Description



FREIGHT ELEVATOR HOISTWAY VENT CALCULATION
 SHAFT AREA: 75 SF. MIN VENTING AREA REQ'D: 75 X 3.5% = 2.6 = 3 SF
 PROPOSED LOUVER: 32" W X 36" H
 PROPOSED FREE LOUVER AREA: 3.18 SF AS PER SPECS
 MODEL: 2000 LOUVER WITH CONCEALED MOTOR, EXTRUDED ALUMINUM W/SCREEN.
 MAKE: VENTPRODUCTS OR APPROVED EQUAL.
 VENT SHALL AUTOMATICALLY OPEN UPON DETECTION OF SMOKE IN THE ELEVATOR LOBBIES OR HOISTWAY, UPON POWER FAILURE OR UPON ACTIVATION OF A MANUAL OVERRIDE CONTROL. THE MANUAL OVERRIDE CONTROL SHALL BE CAPABLE OF OPENING AND CLOSING THE VENTS AND SHALL BE LOCATED IN AN APPROVED LOCATION.

44" X 18" STAIR VENT THROUGH DUCT TO ROOF ABOVE 1ST FLOOR AT REAR STAIR C VENT CALCULATION
 SHAFT AREA: 179 SF (AT CELLAR).
 MIN VENTING AREA REQ'D: 179 X 3.5% = 6.3 SF
 PROPOSED VERTICAL DUCT TO ROOF WITH GOOSENECK ABOVE ROOF WITH 36" W X 56" H LOUVER. PROPOSED FREE LOUVER AREA: 6.64 SF AS PER SPECS.
 MODEL: 2000 LOUVER WITH CONCEALED MOTOR, EXTRUDED ALUMINUM W/SCREEN.
 MAKE: VENTPRODUCTS OR APPROVED EQUAL.
 VENT SHALL AUTOMATICALLY OPEN UPON DETECTION OF SMOKE IN THE ELEVATOR LOBBIES OR HOISTWAY, UPON POWER FAILURE OR UPON ACTIVATION OF A MANUAL OVERRIDE CONTROL. THE MANUAL OVERRIDE CONTROL SHALL BE CAPABLE OF OPENING AND CLOSING THE VENTS AND SHALL BE LOCATED IN AN APPROVED LOCATION.

24" W X 18" H ELEVATOR HOISTWAY VENT DUCT TO ROOF ABOVE 1ST FLOOR AT REAR EXTERIOR WALLS AND UNDERGROUND WALLS.
 FOR WALLS OR PORTIONS THEREOF WITHIN 2 FEET OF THE OUTSIDE GROUND LEVEL, AND FOR WALLS BELOW THE OUTSIDE GROUND LEVEL, ALL OPENINGS, INCLUDING BUT NOT LIMITED TO ANNULAR SPACES AROUND PIPES, ELECTRIC CABLES, AND CONDUITS, SHALL BE PROTECTED BY CLOSING SUCH OPENINGS WITH CEMENT MORTAR, CONCRETE MASONRY, METAL PLATES OR SCREENING DESIGNED TO PREVENT THE PASSAGE OF RODENTS.
 EXTERIOR WALL VENTILATION OPENINGS.
 EXTERIOR WALL VENTILATOR OPENINGS LOCATED WITH ANY PORTION WITHIN 2 FEET OF OUTSIDE GROUND LEVEL SHALL BE COVERED FOR THEIR HEIGHT AND WIDTH WITH PERFORATED SHEET METAL PLATES NO LESS THAN 0.070 INCH (1.8 MM) THICK, EXPANDED SHEET METAL PLATES NOT LESS THAN 0.047 INCH (1.2 MM) THICK, CAST IRON GRILLS OR GRATING, EXTRUDED ALUMINUM LOAD-BEARING VENTS OR WITH HARDWARE CLOTH OF 0.035 INCH (0.89 MM) WIRE OR HEAVIER. THE OPENINGS THEREIN SHALL NOT EXCEED 1/4 INCH (6.4 MM).

COMMERCIAL ELEVATOR HOISTWAY VENT CALCULATION
 SHAFT AREA: 52 SF. MIN VENTING AREA REQ'D: 52 X 3.5% = 1.82 SF = 3 SF
 PROPOSED LOUVER: 32" W X 36" H. PROPOSED FREE LOUVER AREA: 3.18 SF AS PER SPECS
 MODEL: 2000 LOUVER WITH CONCEALED MOTOR, EXTRUDED ALUMINUM W/SCREEN.
 MAKE: VENTPRODUCTS OR APPROVED EQUAL.
 VENT SHALL AUTOMATICALLY OPEN UPON DETECTION OF SMOKE IN THE ELEVATOR LOBBIES OR HOISTWAY, UPON POWER FAILURE OR UPON ACTIVATION OF A MANUAL OVERRIDE CONTROL. THE MANUAL OVERRIDE CONTROL SHALL BE CAPABLE OF OPENING AND CLOSING THE VENTS AND SHALL BE LOCATED IN AN APPROVED LOCATION.

1ST FLOOR PLAN
 SCALE: 3/16"=1'-0"
 1ST FLOOR RESIDENTIAL
 FF EL. 68'-11 3/8" (68.95')
 TSL EL. 68'-10 3/8" (68.86)
 1ST FLOOR COMMERCIAL
 FF EL. 68'-8 5/8" (68.72')
 TSL EL. 68'-7 5/8" (68.64')

- RETAIL STORE 1, OCCUPANCY M, USE GROUP 6A, OCCUPANT LOAD: 138 P.
- RETAIL STORE 2, OCCUPANCY M, USE GROUP 6A, OCCUPANT LOAD: 74 P.
- RESIDENTIAL LOBBY, OCCUPANCY: R-2, USE GROUP: 2B, OCCUPANT LOAD: 5 P.
- TOTAL OCCUPANT LOAD: 212 P.

Architecture - Planning - Interior Design
 PROJECT

NEW 8-STORY & CELLAR
 MIXED USE BUILDING
 1 PUTNAM AVENUE,
 BROOKLYN NY 11238

DRAWING TITLE

1ST FLOOR PLAN

DOB JOB # B00696890-11

SEAL & SIGNATURE

REGISTERED ARCHITECT
 MUSTAFAI SAIBOVICH GOCHEN
 STATE OF NEW YORK
 037989

DATE: _____
 PROJECT NO: _____
 DRAWING BY: _____
 CHK BY: _____
 DWG NO: _____
 A-101.00
 CAD FILE NO: _____

