



## **J & H Lee Center**

1685 Lee Rd, Winter Park, FL 32789



**Sean Myers**

Brightleaf Properties

1133 Louisiana Ave, Winter Park, FL 32789

[smyers@brightleafproperties.com](mailto:smyers@brightleafproperties.com)

(407) 252-9802



## J & H Lee Center

\$19.50 /SF/Yr

- Convenient to I-4, Park Avenue, Whole Foods, Publix, Trader Joe's and many area restaurants
- A very short walk to Winter Park's 73-acre Ravaudage Mixed-Use Project

Rental Rate:	\$19.50 /SF/Yr
Min. Divisible:	1,200 SF
Property Type:	Office
Building Class:	B
Rentable Building Area:	14,867 SF
Year Built:	1985
Walk Score ©:	62 (Somewhat Walkable)
Transit Score ©:	37 (Some Transit)
Rental Rate Mo:	\$1.63 USD/SF/Mo



### 1st Floor Ste 100

Space Available	1,200 - 3,622 SF
Rental Rate	\$19.50 /SF/Yr
Date Available	Now
Service Type	Full Service Gross
Built Out As	Healthcare
Space Type	Relet
Space Use	Office/Medical
Lease Term	Negotiable

1

### 1st Floor Ste 110

Space Available	1,562 SF
Rental Rate	\$19.50 /SF/Yr
Date Available	Now
Service Type	Full Service Gross
Built Out As	Professional Services
Space Type	Relet
Space Use	Office/Medical
Lease Term	Negotiable

2

### 2nd Floor Ste 200

Space Available	1,200 - 3,629 SF
Rental Rate	\$19.50 /SF/Yr
Date Available	Now
Service Type	Full Service Gross
Built Out As	Healthcare
Space Type	Relet
Space Use	Office/Medical
Lease Term	Negotiable

3

### 2nd Floor Ste 210

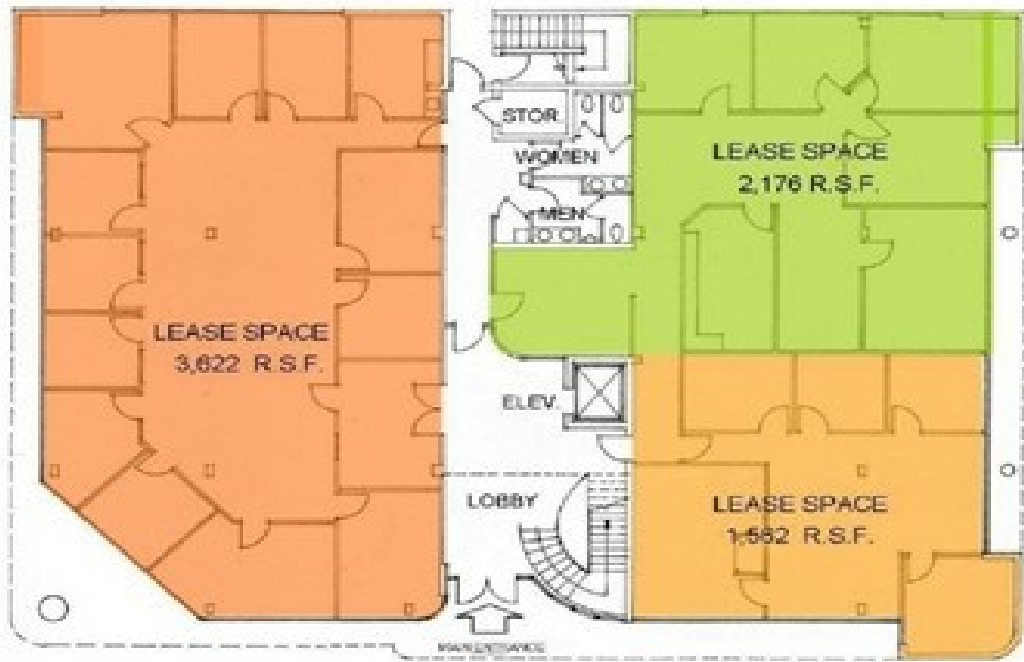
Space Available	1,200 - 3,878 SF
Rental Rate	\$19.50 /SF/Yr
Date Available	Now
Service Type	Full Service Gross
Built Out As	Healthcare
Space Type	Relet
Space Use	Office/Medical
Lease Term	Negotiable

4



1685 Lee Rd, Winter Park, FL 32789

# Property Photos



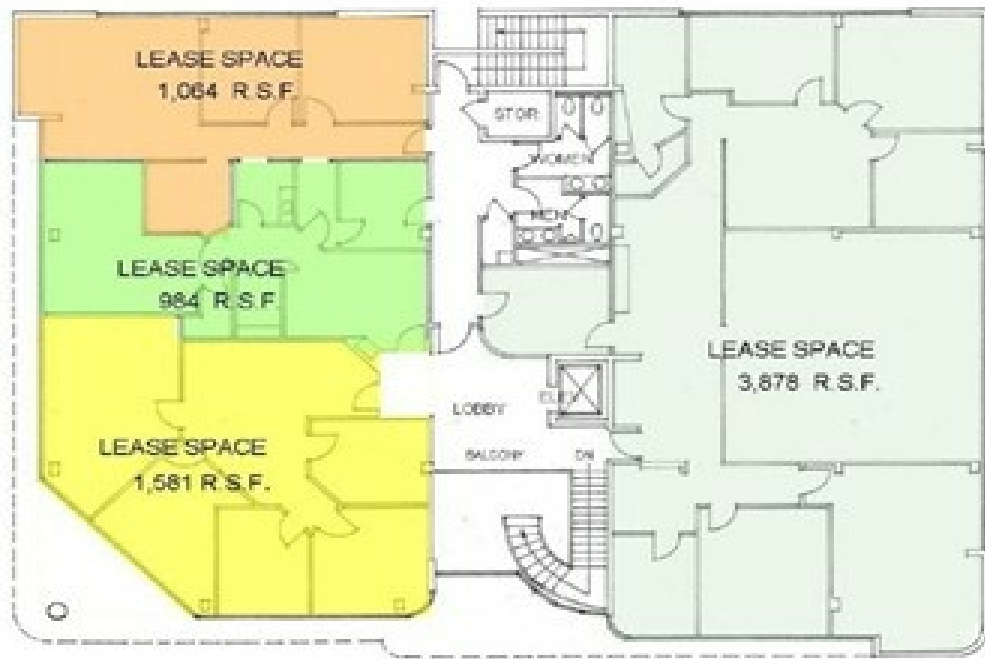
## First Floor

1/16" = 1'-0"

## J&H LEE CENTER

Winter Park, Florida

J&H Lee Center - 1st Floor



## Second Floor

1/16" = 1'-0"

## J&H LEE CENTER

Winter Park, Florida

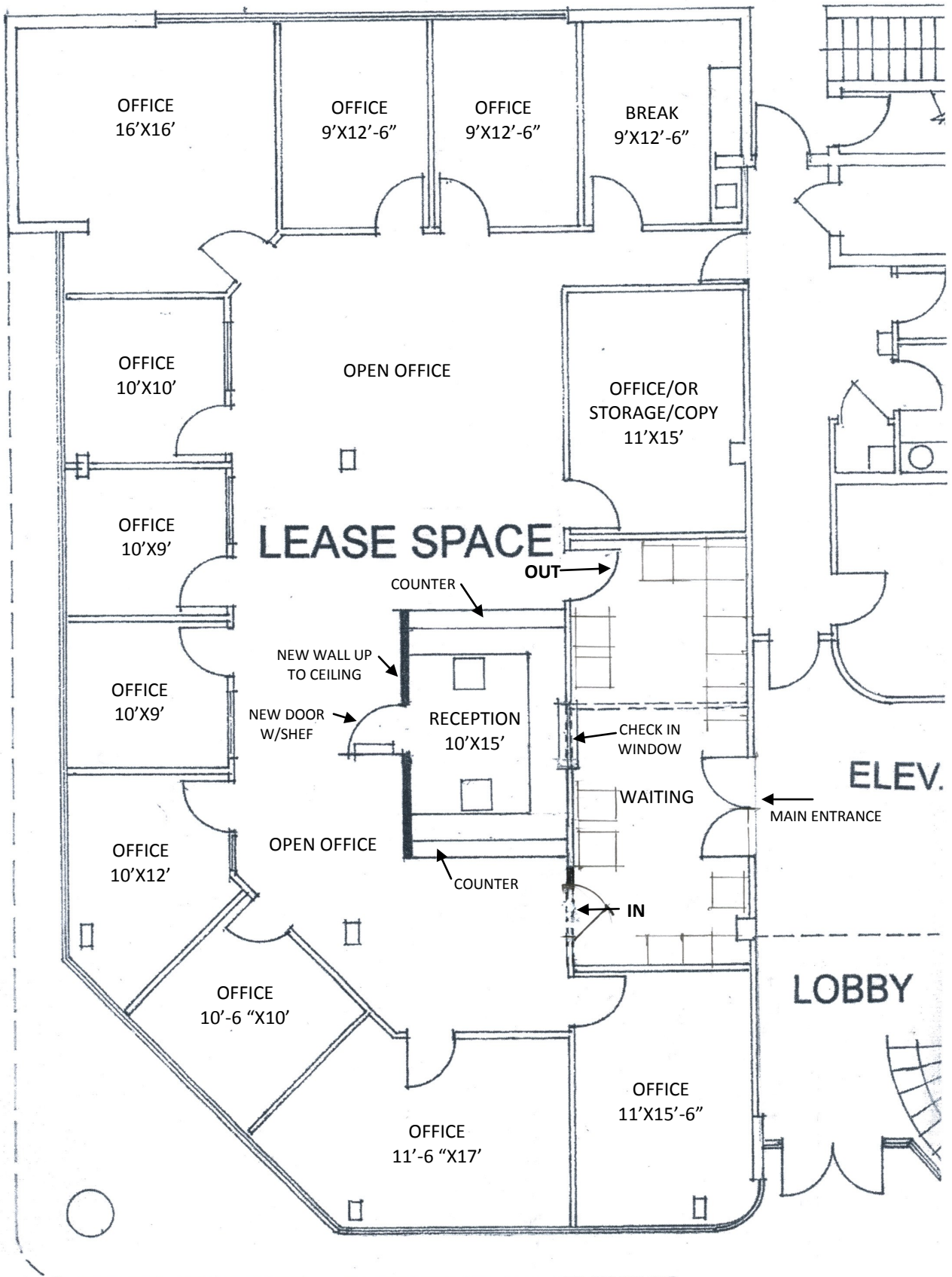
Nov. 18, 2009

J&H Lee Center - 2nd Floor

# Property Photos

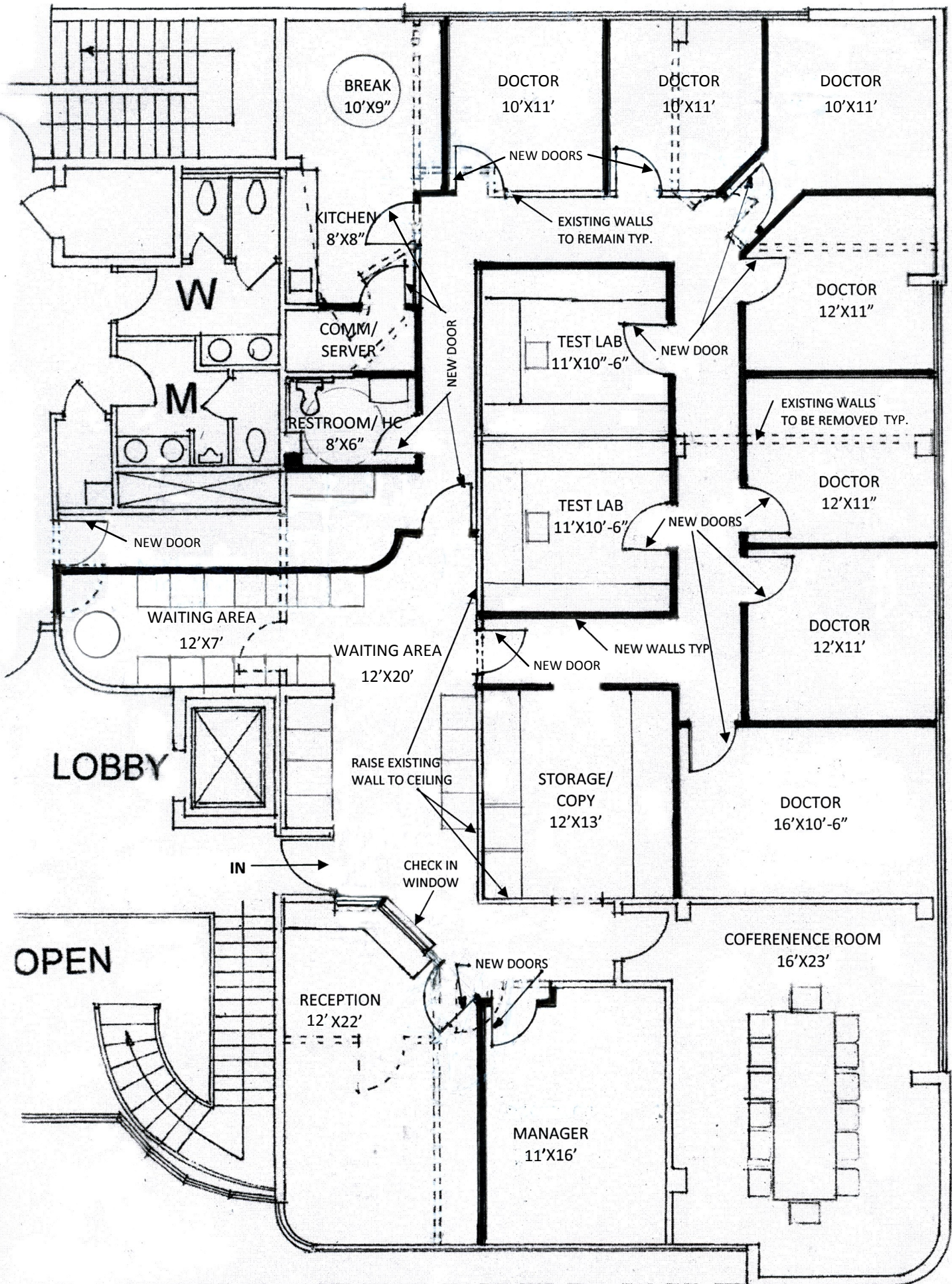


Building Photo



**1RST FLOOR SOUTH END 1/8"-1'-0"**

**PSYCHIATRY FPMG J&H LEE CENTER WINTER PARK, FL 12-13-2010**



**2ND FLOOR NORTH END**

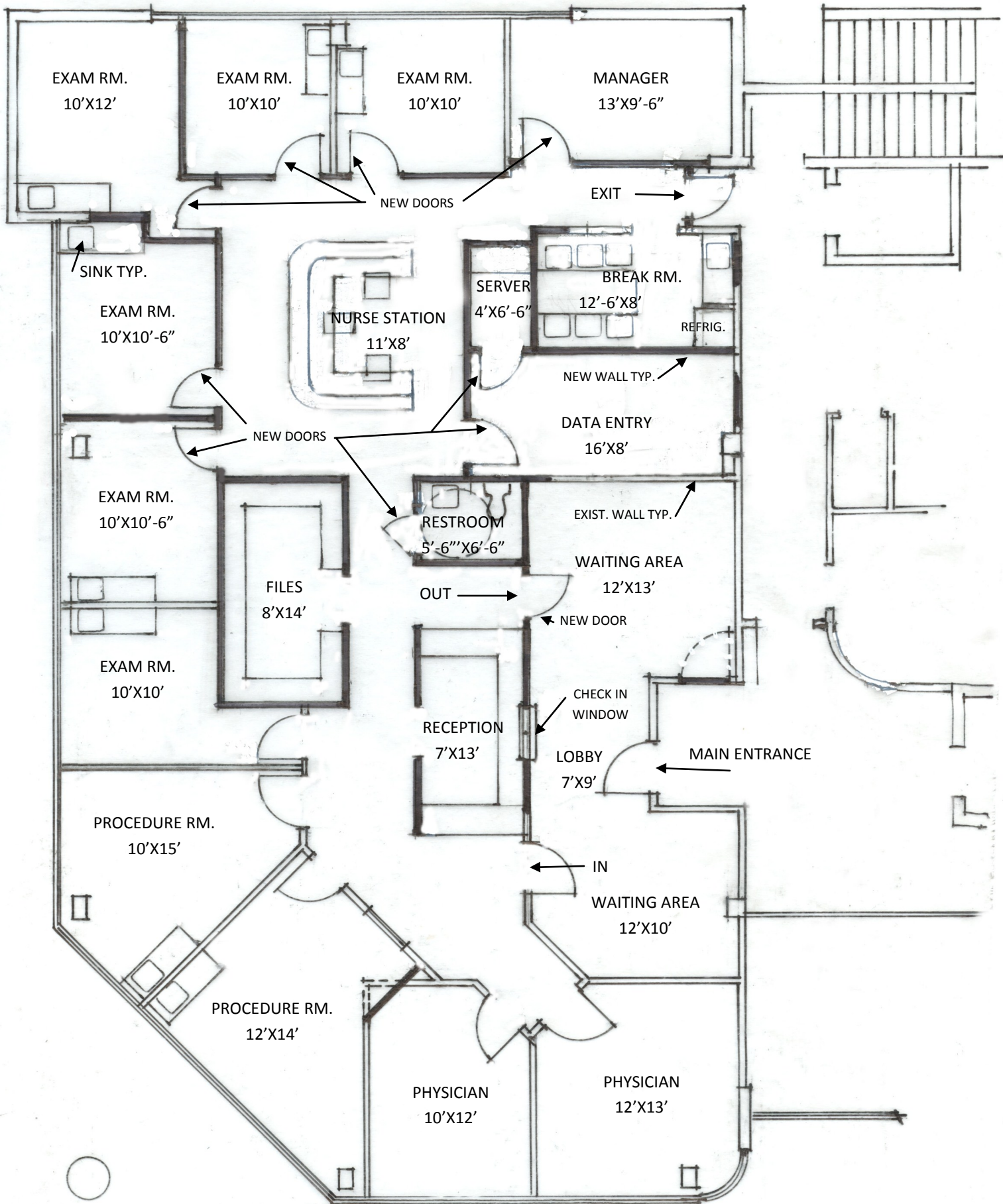
**1/8"=1'-0"**

REVISED 12-16-2010

**NEUROPSYCHOLOGY FPMG**

**J&H LEE CENTER, WINTER PARK**

**12-13-2010**



2ND FLOOR NORTH END STUDY NO. 1 1/8"=1'-0"

NEUROLOGY FPMG J & H LEE CENTER, WINTER PARK, FL

12-16-2010