

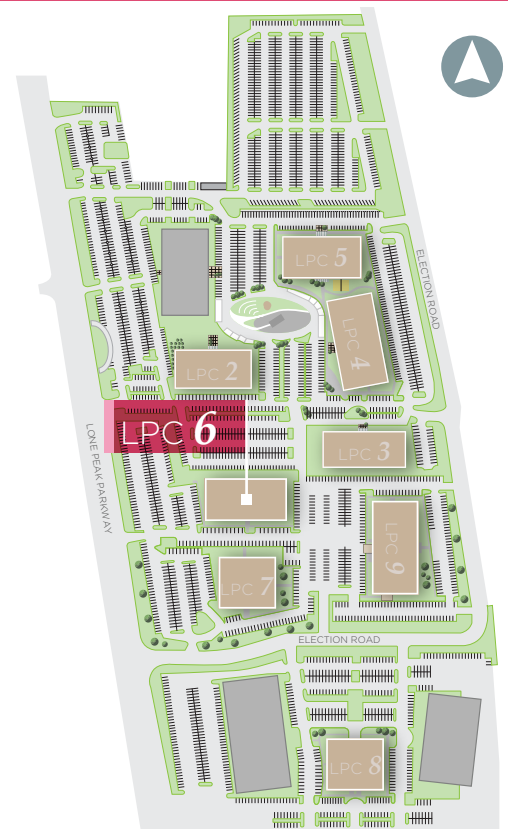
LONE PEAK CENTER 6



170 WEST ELECTION ROAD | SALT LAKE CITY, UTAH

BUILDING FEATURES

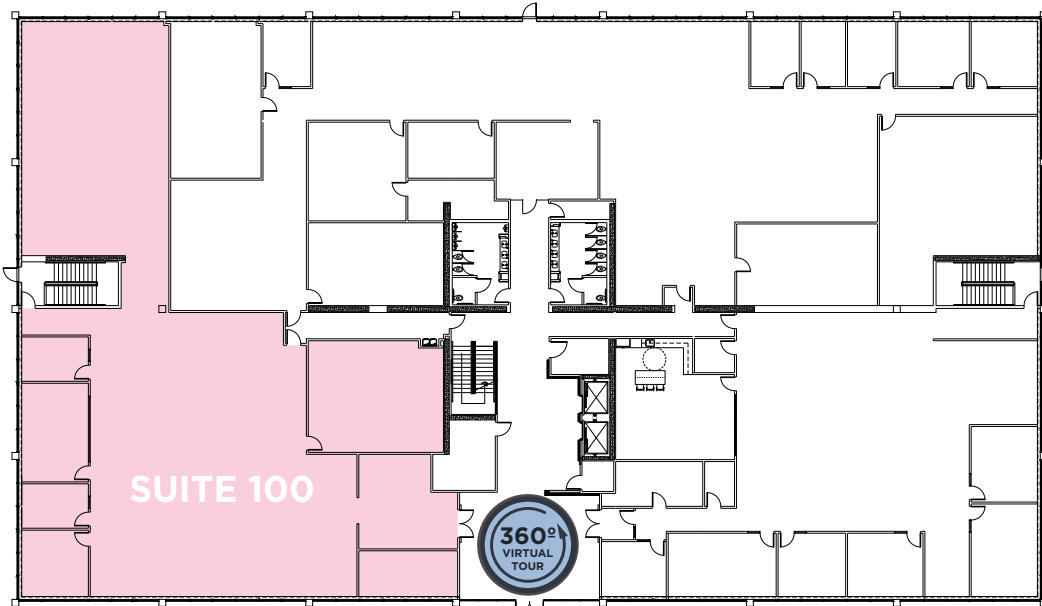
- 56,559 RSF
- 8,541 Furnished Spec Suite
- 15,921 RSF immediately available



MAIER SIEBEL BABER

LONE PEAK CENTER 6

FIRST FLOOR



SUITE 100: 8,541 RSF

FURNISHED



SECOND FLOOR



SUITE 230: 1,179 RSF

SUITE 250: 6,212 RSF



FOR LEASING INFORMATION, PLEASE CONTACT:

DANA BAIRD, CCIM
Executive Managing Director
(801) 303 5526
dana.baird@cushwake.com

MIKE RICHMOND
Executive Managing Director
(801) 303 5434
mike.richmond@cushwake.com

 **CUSHMAN & WAKEFIELD**
MAIER SIEBEL BABER