

13231 ROOSTER SPRINGS RD. AUSTIN, TX



Creative Commercial Opportunity!

HWY 290 Frontage Rd.



ABOUT THE PROPERTY

This unique commercial property is located at the hard corner of Hwy 290 and Rooster Springs Rd. in the ETJ between Austin and Dripping Springs. With over 100 ft of 290 frontage road, this would make a gorgeous wedding venue, brewery, Bed and Breakfast, creative office building, event venue, or land development! It has been transformed into a functional office building with a meeting room, 5 large functional spaces for offices, or collaborative working spaces while the kitchen is still fully functional as a break room. Endless possibilities!



PROPERTY FEATURES

- 5,174 sqft
- 3.62 acres
- 5 office spaces
- Breakroom
- ETJ
- City Water
- 100+ ft Hwy 290 frontage road

FOR SALE AT

\$2,300,000

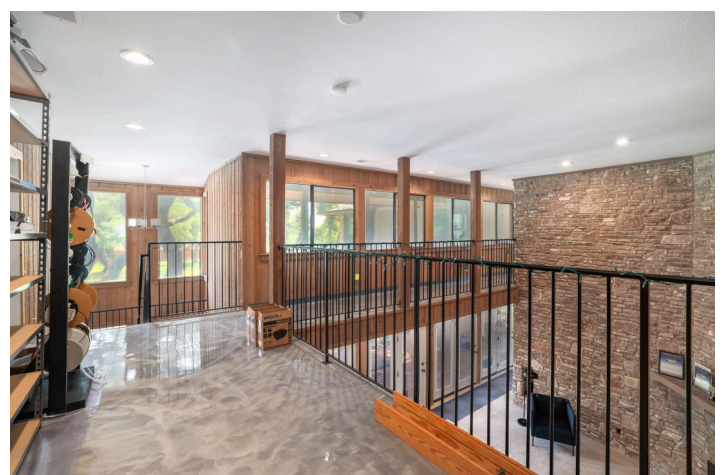


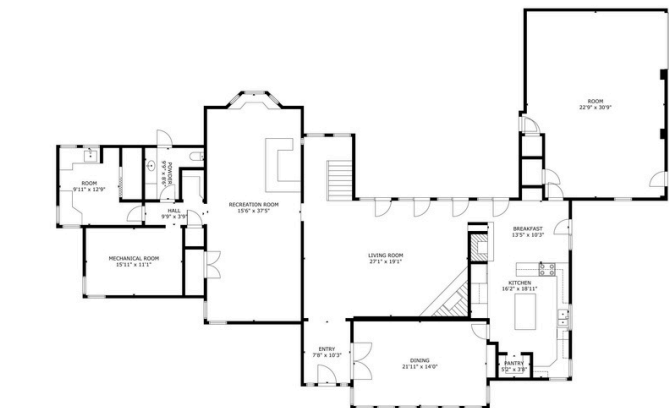
512-289-0909



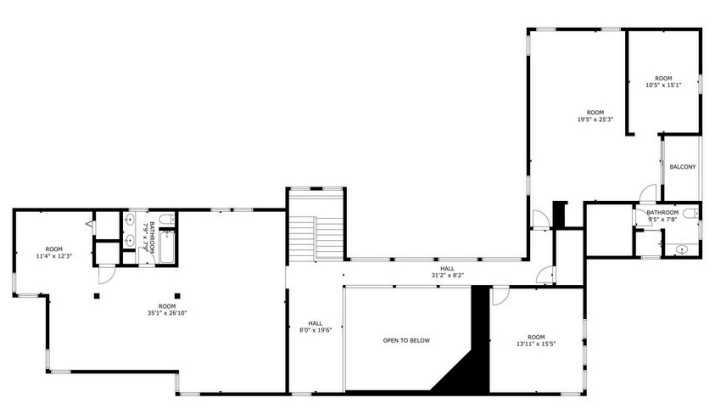
JillCipriano@SpyglassRealty.Com







FLOOR 1



FLOOR 2