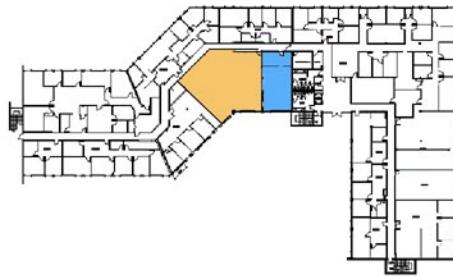
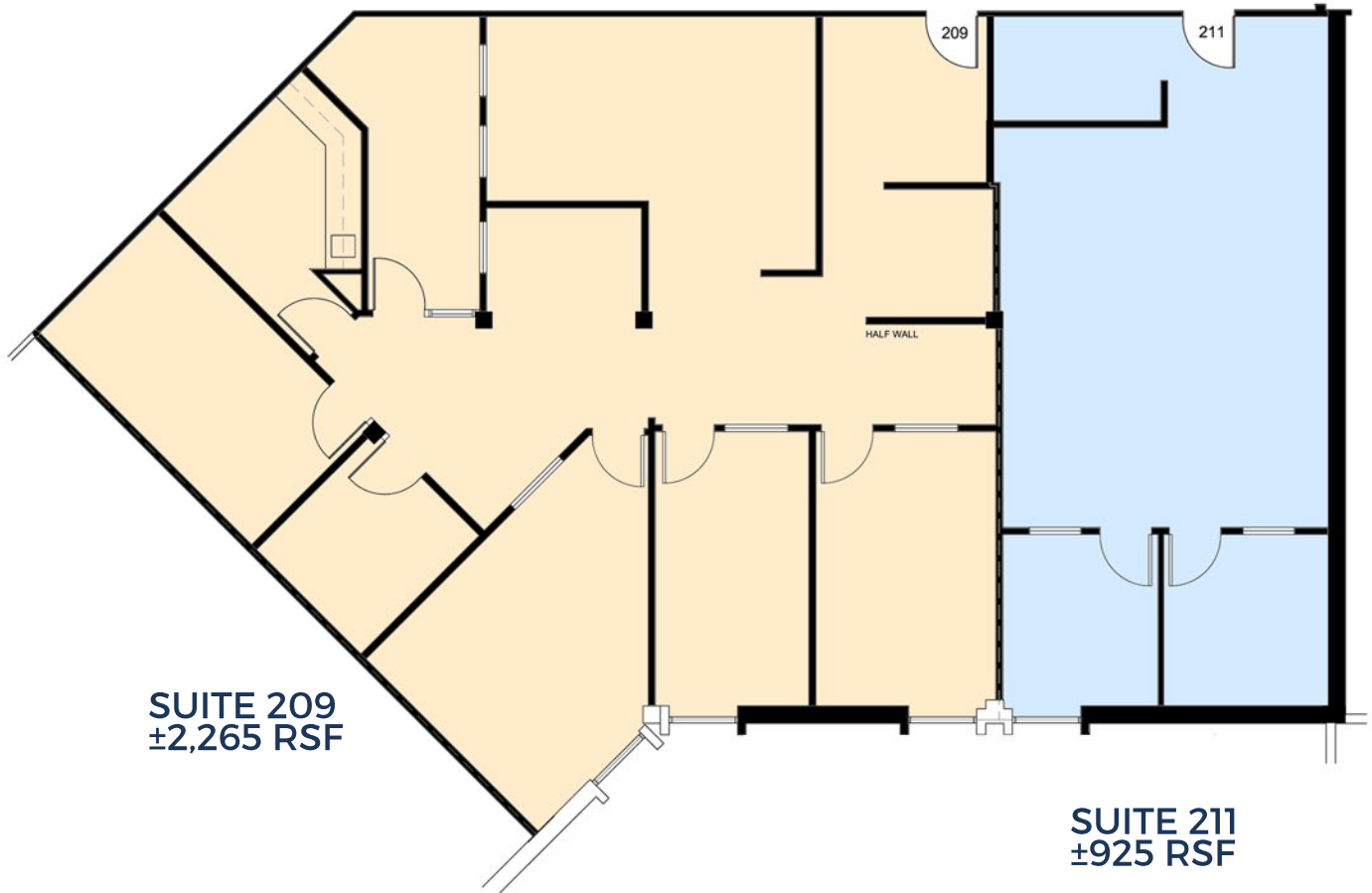


1524 I-35 Office Building

AVAILABLE SPACE

2ND FLOOR
SUITE 209/211 ± 3,190 RSF



Dan Lewis
David Alsmeyer

dlewis@tigusa.com
dalsmeyer@tigusa.com

512.732.0400

901 S. MoPac Expressway, Suite IV-285 | Austin, TX 78746 | www.tigusa.com