

INDUSTRIAL/FLEX/RETAIL PROPERTY FOR LEASE

112 GROVE STREET

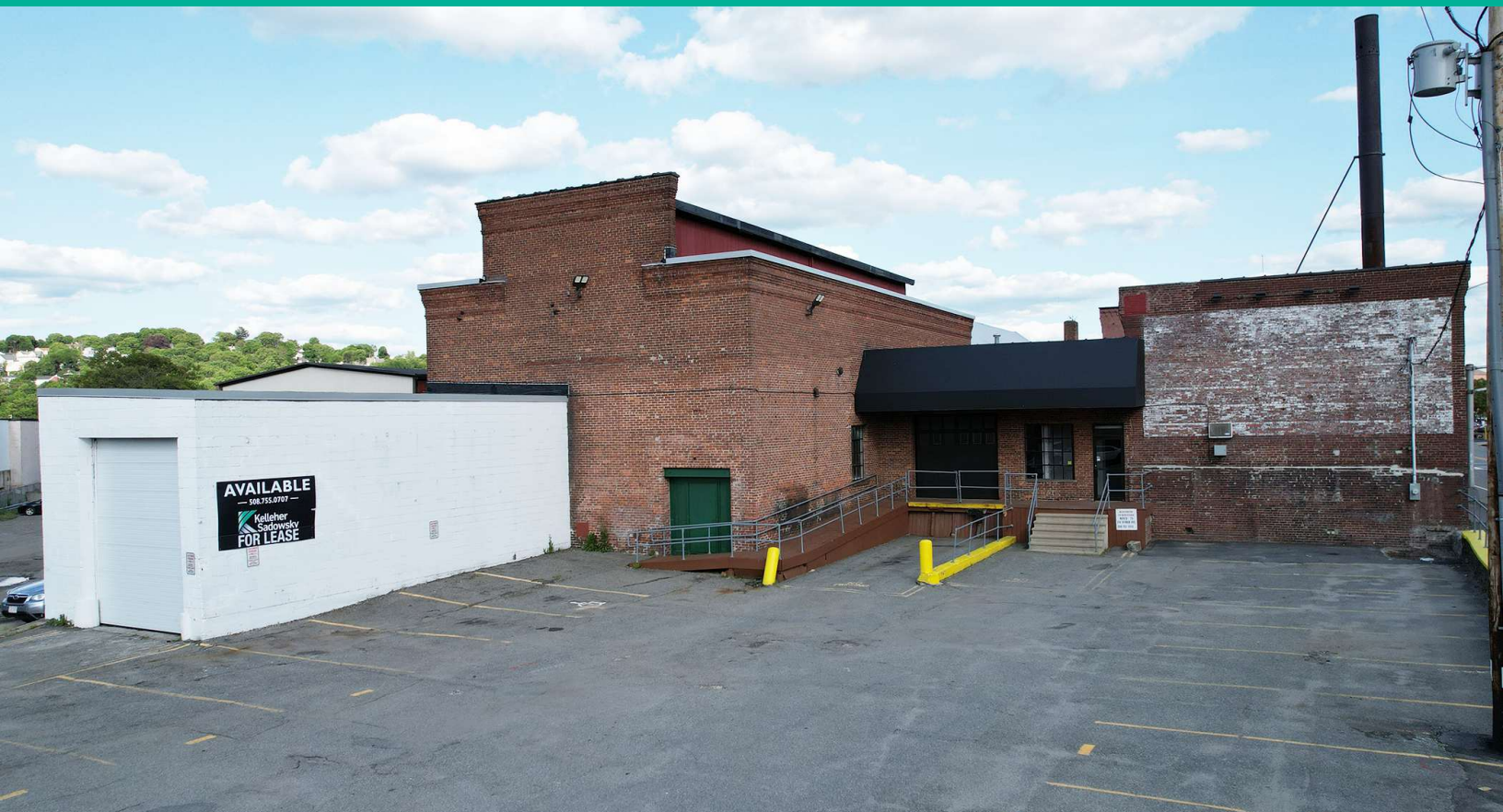
Worcester, Massachusetts



JAMES UMPHREY
508.635.6790
umphrey@kelleher-sadowsky.com

JAY UMPHREY
508.333.7520
jayumphrey@kelleher-sadowsky.com





PROPERTY DESCRIPTION

Kelleher and Sadowsky is pleased to present 112 Grove Street in Worcester MA as available for lease. This building offers approximately 19,000 square feet of versatile space ideal for retail, flex, or industrial use. There is also an additional 14,000 SF in the lower level that the Tenant can utilize. The building features a 17' 6" clear height, a convenient drive-in door, and an open layout suitable for a variety of business operations. Located in a highly accessible area with easy access to I-290, Route 9, and downtown Worcester, this property provides an excellent opportunity for businesses seeking a strategic and flexible location. Please call today to schedule a tour.

OFFERING SUMMARY

Lease Rate:	\$8.75 SF/yr (NNN)
Drive ins:	1
Available SF:	18,133 SF
Utilities:	Natural Gas, Electric
Lot Size:	0.64 Acres
Zoning:	BG-6
Clear Hight:	17.5 Feet
Roof:	Rubber Membrane
Year Built:	1900

FOR LEASE • 112 GROVE STREET

[Additional Photos](#)

