

For Lease



Class A office space

- 11,500 - 66,745 r.s.f. of open office space designed for dense users
- The space is in excellent condition and available for immediate occupancy
- High ceilings and lots of natural light
- Parking ratio of 7 per 1,000 s.f.

**13550 Triton Park Boulevard
Louisville, KY 40223**

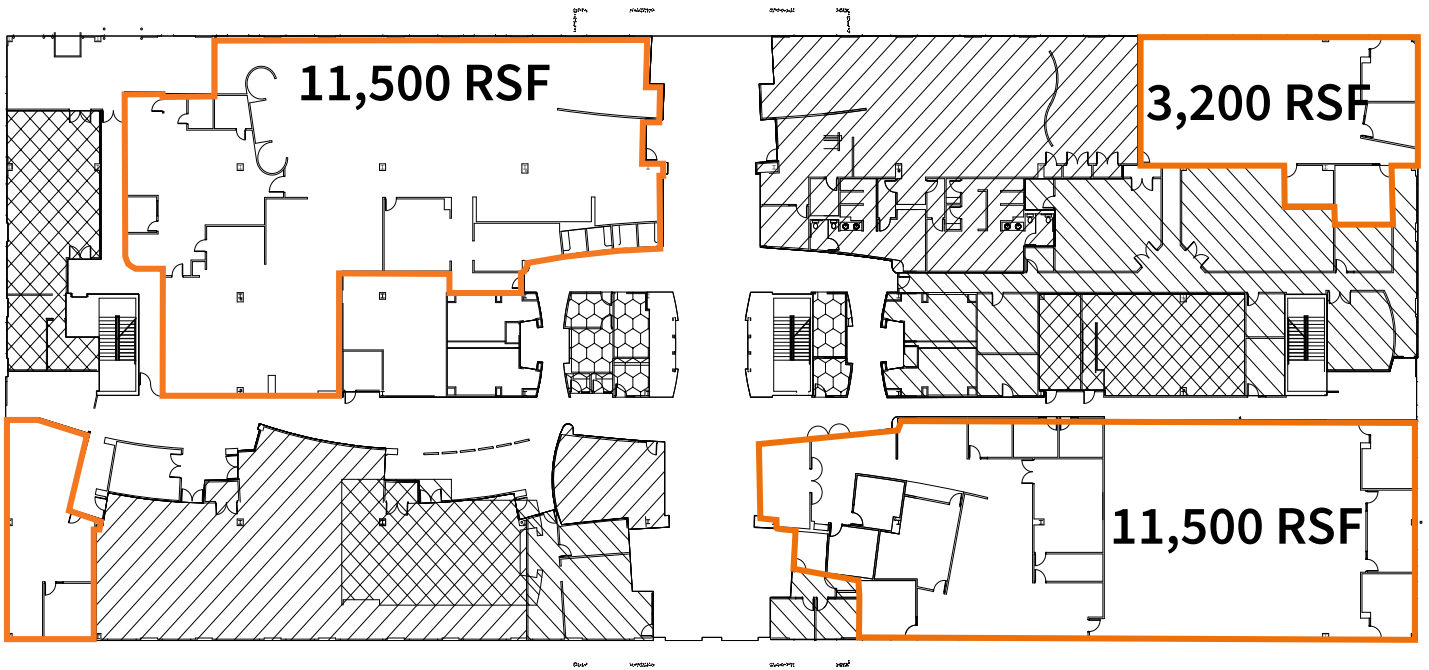
Doug Owen, SIOR
+1 502 394 2516
doug.owen@am.jll.com

Yandell Wood, SIOR
+1 502 394 2518
yandell.wood@am.jll.com

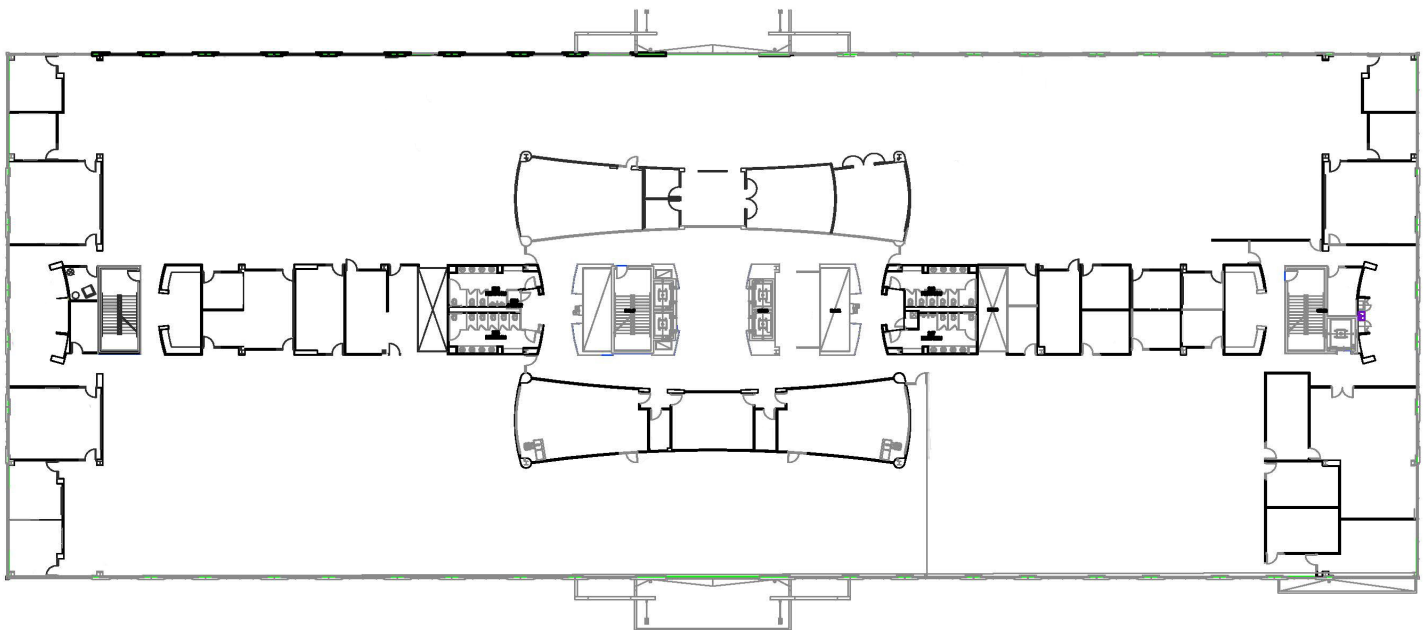
jll.com/louisville



1st Floor



2nd Floor: Up to 66,745 s.f.



DISCLAIMER

©2021 Jones Lang LaSalle IP, Inc. All rights reserved. All information contained herein is from sources deemed reliable; however, no representation or warranty is made to the accuracy thereof.

