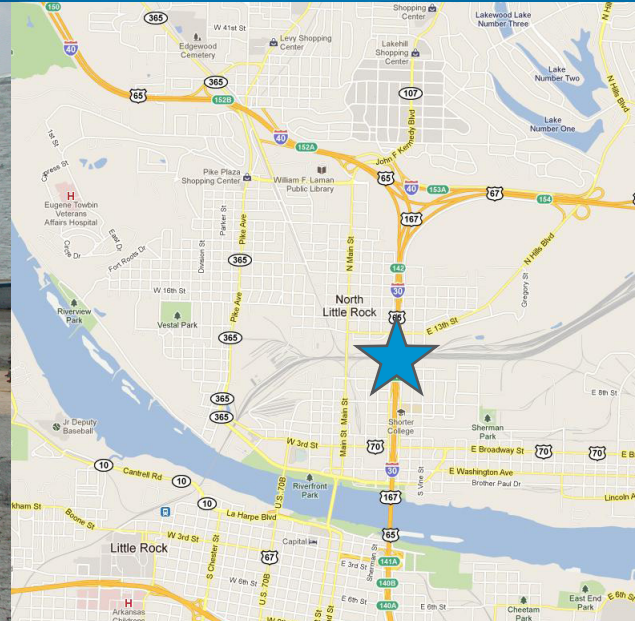


FOR LEASE



# Historic Warehouse/Distribution Complex

10TH STREET, NORTH LITTLE ROCK, AR 72114



## Availability & Rate

Lease Rate: **\$1.80/SF**

- › Plant 2 West: 14,000 - 38,208 SF
- › Plant 2 East: Fully leased

## Information & Amenities

- › Full-access rail spur
- › High door loading docks
- › 15'-20' ceilings
- › Sloped sawtooth roof
- › Sprinkler system
- › 3 phase, 480 volt available in some units
- › Natural gas heat
- › See third page for floor plans

## Contact Us

LEASING AGENT:  
NATHAN MONAN  
501 372 6161 | EXT. 710  
LITTLE ROCK, AR  
[nathan.monan@colliers.com](mailto:nathan.monan@colliers.com)

PROPERTY MANAGER:  
EMILY BURKE  
501 664 5524  
LITTLE ROCK, AR  
[emily.burke@colliers.com](mailto:emily.burke@colliers.com)

COLLIERS INTERNATIONAL  
1 Allied Drive, Suite 1500  
Little Rock, AR 72202  
[www.colliers.com/arkansas](http://www.colliers.com/arkansas)

This document has been prepared by Colliers International for advertising and general information only. Colliers International makes no guarantees, representations or warranties of any kind, expressed or implied, regarding the information including, but not limited to, warranties of content, accuracy and reliability. Any interested party should undertake their own inquiries as to the accuracy of the information. Colliers International excludes unequivocally all inferred or implied terms, conditions and warranties arising out of this document and excludes all liability for loss and damages arising there from.

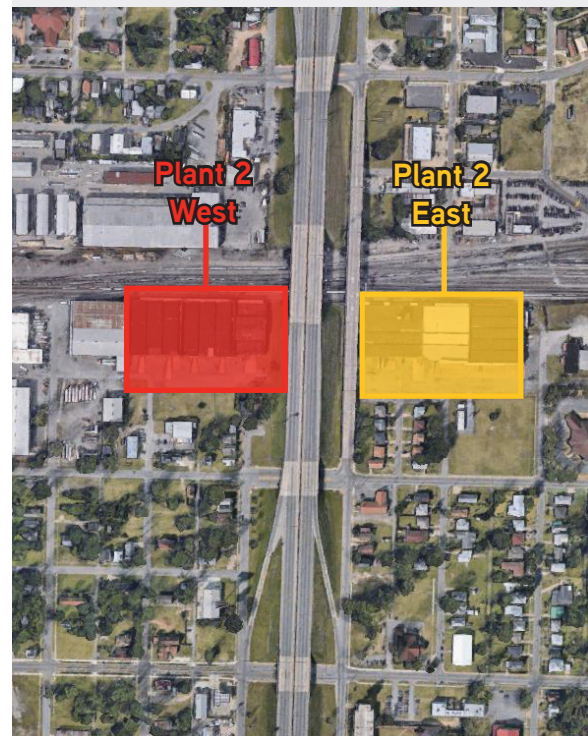
# Historic Warehouse/Distribution Complex



## Contact Us

LEASING AGENT:  
NATHAN MONAN  
501 372 6161 | EXT. 710  
LITTLE ROCK, AR  
[nathan.monan@colliers.com](mailto:nathan.monan@colliers.com)

PROPERTY MANAGER:  
EMILY BURKE  
501 664 5524  
LITTLE ROCK, AR  
[emily.burke@colliers.com](mailto:emily.burke@colliers.com)



COLLIERS INTERNATIONAL  
1 Allied Drive, Suite 1500  
Little Rock, AR 72202  
[www.colliers.com/arkansas](http://www.colliers.com/arkansas)

This document has been prepared by Colliers International for advertising and general information only. Colliers International makes no guarantees, representations or warranties of any kind, expressed or implied, regarding the information including, but not limited to, warranties of content, accuracy and reliability. Any interested party should undertake their own inquiries as to the accuracy of the information. Colliers International excludes unequivocally all inferred or implied terms, conditions and warranties arising out of this document and excludes all liability for loss and damages arising there from.





**Plant 2**

West - 10th & Olive

<b>18c</b> 8,392 SF Lee Auction Company #401 10th St.	<b>18b</b> 19,708 SF Lee Auction Company #405 10th St.	<b>18a</b> 10,400 SF Jones Brothers 7/31/2022 #409 10th St.	<b>17b</b> 24,208 SF VACANT #417 10th St.	<b>17a</b> 14,000 SF VACANT #425 10th St.	<b>16</b> 20,832 SF Arbest Fire Protection #429 10th St.
--	---	---	--	--	---

Olive Street

10th Street

East - 10th & Vine

<b>15b</b> 19,858 SF Rustic Heritage (Ben Barnett) #601 10th St.	<b>15a</b> 20,106 SF Rustic Heritage (Ben Barnett) #605 10th St.	<b>14</b> 34,278 SF Rustic Heritage (Ben Barnett) #609 10th St.	<b>13d</b> 7,004 SF Rustic Heritage (Ben Barnett) #701 10th St.	<b>13c</b> 7,004 SF Rustic Heritage (Ben Barnett) #705 10th St.	<b>13b</b> 13,377 SF Refurbished Office Panels #709 10th St.	<b>13</b> 4,080 SF SHOP #717 10th St.
						<b>13a</b> 9,782 SF Recycled Bikes for Kids

Plant 2 East  
EAST 115,489 Total SF

Vine Street

10th Street