

Property Highlights:

- Professional Design & Decor
- Convenient to I-575,
Downtown Canton & Bluffs
Parkway
- Suites from 1,160 to 2,320
Square feet
- Individual Office Space
- Competitive Rates
- On-Site Management
- Ample Parking

Demographics

	<u>3-mile</u>	<u>5-mile</u>	<u>10-mile</u>
Population	23,570	50,087	141,480
Households	8,172	17,510	49,303
Income	\$61,747	\$68,849	\$83,623

LOCATED ON RIVERSTONE BOULEVARD 2 TRAFFIC LIGHTS FROM I-575

The Riverstone Professional Building is a 20,000 square foot professional office building in the heart of Canton's Riverstone District, with ease of access, ample parking and traditional style architecture.

Conveniently located just past the Publix at Riverstone Plaza, across from Home Depot and US Post Office.

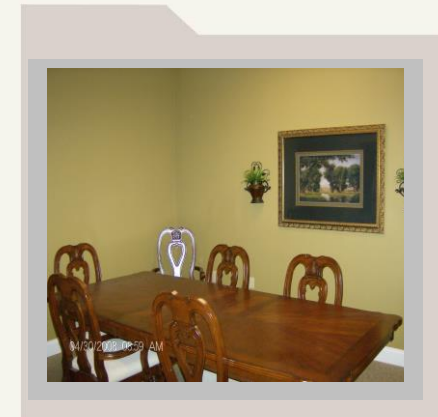
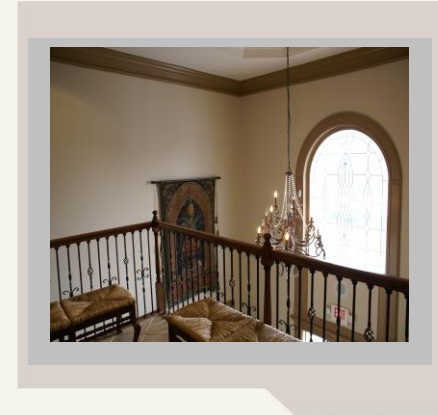
Ideal for all office types including medical, dental, attorneys, real estate, call center, insurance and other professional services.



**A PROFESSIONAL LOCATION FOR OFFICES OF ALL SIZES, FROM
INDIVIDUAL SPACE TO LARGE
MULTI-DIMENSIONAL OFFICES, INCLUDING MEDICAL PRACTITIONERS.**

EXISTING TENANTS INCLUDE:

- Alliance Spine & Pain Centers
- Murphy CPA Group, P C
- Professional Liability Consultants
- ARC South, LLC
- ACE Community Support Services
- Georgia Psychological Associates
- Bridgemill Counseling
- BrightStar Care
- Blanton Landscaping
- Rhonda Blackwell, Attorney
- ProsperGA, Ed Garcia
- Hope2911 Counseling



Meridian is a commercial developer and licensed general contractor with experience in office, medical, retail and residential development. In addition to development Meridian also performs leasing and management services for affiliated properties.

Project Developed by:

Meridian
DEVELOPMENT & CONSTRUCTION SERVICES