

248

WEST 14TH STREET WEST VILLAGE, NYC

Between Seventh & Eighth Avenues

RETAIL FOR LEASE

APPROXIMATE SIZE

Ground Floor: 2,000 SF
Second Floor: 2,000 SF
Basement: 2,000 SF

ASKING RENT

~~Ground Floor: \$22,000/Month~~ Reduced
Ground Floor: \$19,000/Month
Second Floor: \$10,000/Month

POSSESSION	TERM	FRONTAGE
Immediate	1-10 Years	11 FT

COMMENTS

- Open-layout space
- ADA bathrooms in place
- PA for 174 people
- Built-out second floor with 5 rooms
- Can be combined with the ground floor
- All dry retail uses and/or any gym type are accepted and preferred

NEIGHBORS

Don Angie • Juice Press • Coppelia • The Donut Pub • SLT • Equinox • Sotto 13 • Alice • Cecchi's • The Waverly Inn • Baby Brasa • Roey's • Arthur & Sons

TRANSPORTATION

A C E L 1 2 3

PATH
M5 M7 M20 M14A M14D

JAMES FAMULARO
President

GREG GOLDBERG
Senior Director
646.780.4904
ggoldberg@meridiancapital.com



MERIDIAN
RETAIL LEASING

All information supplied is from sources deemed reliable and is furnished subject to errors, omissions, modifications, removal of the listing from sale or lease, and to any listing conditions, including the rates and manner of payment of commissions for particular offerings imposed by Meridian Capital Group. This information may include estimates and projections prepared by Meridian Capital Group with respect to future events, and these future events may or may not actually occur. Such estimates and projections reflect various assumptions concerning anticipated results. While Meridian Capital Group believes these assumptions are reasonable, there can be no assurance that any of these estimates and projections will be correct. Therefore, actual results may vary materially from these estimates and projections. Any square footage dimensions set forth are approximate.

PROPERTY INFORMATION

248 WEST 14TH STREET

WEST VILLAGE, NYC | Between Seventh and Eighth Avenues

RETAIL FOR LEASE



INTERIOR | GROUND FLOOR

JAMES FAMULARO
President

GREG GOLDBERG
Senior Director
646.780.4904
ggoldberg@meridiancapital.com

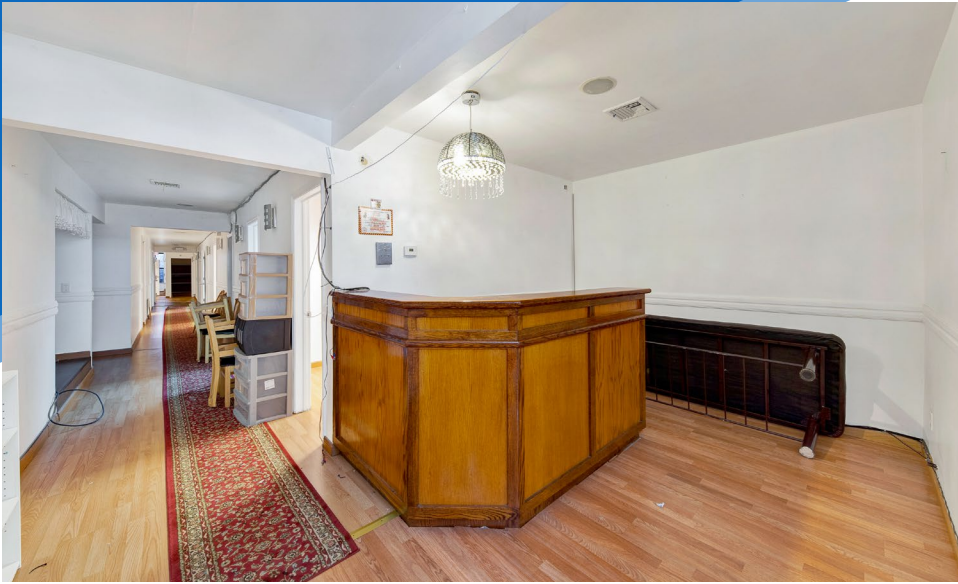


All information supplied is from sources deemed reliable and is furnished subject to errors, omissions, modifications, removal of the listing from sale or lease, and to any listing conditions, including the rates and manner of payment of commissions for particular offerings imposed by Meridian Capital Group. This information may include estimates and projections prepared by Meridian Capital Group with respect to future events, and these future events may or may not actually occur. Such estimates and projections reflect various assumptions concerning anticipated results. While Meridian Capital Group believes these assumptions are reasonable, there can be no assurance that any of these estimates and projections will be correct. Therefore, actual results may vary materially from these estimates and projections. Any square footage dimensions set forth are approximate.

248 WEST 14TH STREET

WEST VILLAGE, NYC | Between Seventh and Eighth Avenues

RETAIL FOR LEASE



INTERIOR | SECOND FLOOR

JAMES FAMULARO
President

GREG GOLDBERG
Senior Director
646.780.4904
ggoldberg@meridiancapital.com



All information supplied is from sources deemed reliable and is furnished subject to errors, omissions, modifications, removal of the listing from sale or lease, and to any listing conditions, including the rates and manner of payment of commissions for particular offerings imposed by Meridian Capital Group. This information may include estimates and projections prepared by Meridian Capital Group with respect to future events, and these future events may or may not actually occur. Such estimates and projections reflect various assumptions concerning anticipated results. While Meridian Capital Group believes these assumptions are reasonable, there can be no assurance that any of these estimates and projections will be correct. Therefore, actual results may vary materially from these estimates and projections. Any square footage dimensions set forth are approximate.

248 WEST 14TH STREET
 WEST VILLAGE, NYC | Between Seventh and Eighth Avenues

RETAIL FOR LEASE



JAMES FAMULARO
 President

GREG GOLDBERG
 Senior Director
 646.780.4904
 ggoldberg@meridiancapital.com



All information supplied is from sources deemed reliable and is furnished subject to errors, omissions, modifications, removal of the listing from sale or lease, and to any listing conditions, including the rates and manner of payment of commissions for particular offerings imposed by Meridian Capital Group. This information may include estimates and projections prepared by Meridian Capital Group with respect to future events, and these future events may or may not actually occur. Such estimates and projections reflect various assumptions concerning anticipated results. While Meridian Capital Group believes these assumptions are reasonable, there can be no assurance that any of these estimates and projections will be correct. Therefore, actual results may vary materially from these estimates and projections. Any square footage dimensions set forth are approximate.