



# 3.3 ACRES NEAR I-10 RAMP

Kalani Drive, Diamondhead, MS 39525

TIM CARLSON • PRINCIPAL

OFFICE: 228.276.2700

MOBILE: 228.547.0707

tcarlson@southeastcre.com

MONTE LUFFEY • PRINCIPAL

OFFICE: 228.276.2700

MOBILE: 228.547.1953

mluffey@southeastcre.com



## PROPERTY DESCRIPTION

Southeast Commercial is pleased to offer 3.3 Acres FOR SALE located in Diamondhead, MS. The property has of 234' of frontage on Kalani Drive. Zoning is C-1 General Commercial.

## OFFERING SUMMARY

Sale Price:	Contact Agent
Lot Size:	3.3 Acres
Zoning:	C-1 General Commercial

LAND FOR SALE

## PROPERTY SUMMARY



**SOUTHEAST  
COMMERCIAL**  
REAL ESTATE



# 3.3 ACRES NEAR I-10 RAMP

Kalani Drive, Diamondhead, MS 39525

TIM CARLSON • PRINCIPAL

OFFICE: 228.276.2700

MOBILE: 228.547.0707

tcarlson@southeastcre.com

MONTE LUFFEY • PRINCIPAL

OFFICE: 228.276.2700

MOBILE: 228.547.1953

mluffey@southeastcre.com



LAND FOR SALE

AERIAL



SOUTHEAST  
COMMERCIAL  
REAL ESTATE





# 3.3 ACRES NEAR I-10 RAMP

Kalani Drive, Diamondhead, MS 39525

TIM CARLSON • PRINCIPAL

OFFICE: 228.276.2700

MOBILE: 228.547.0707

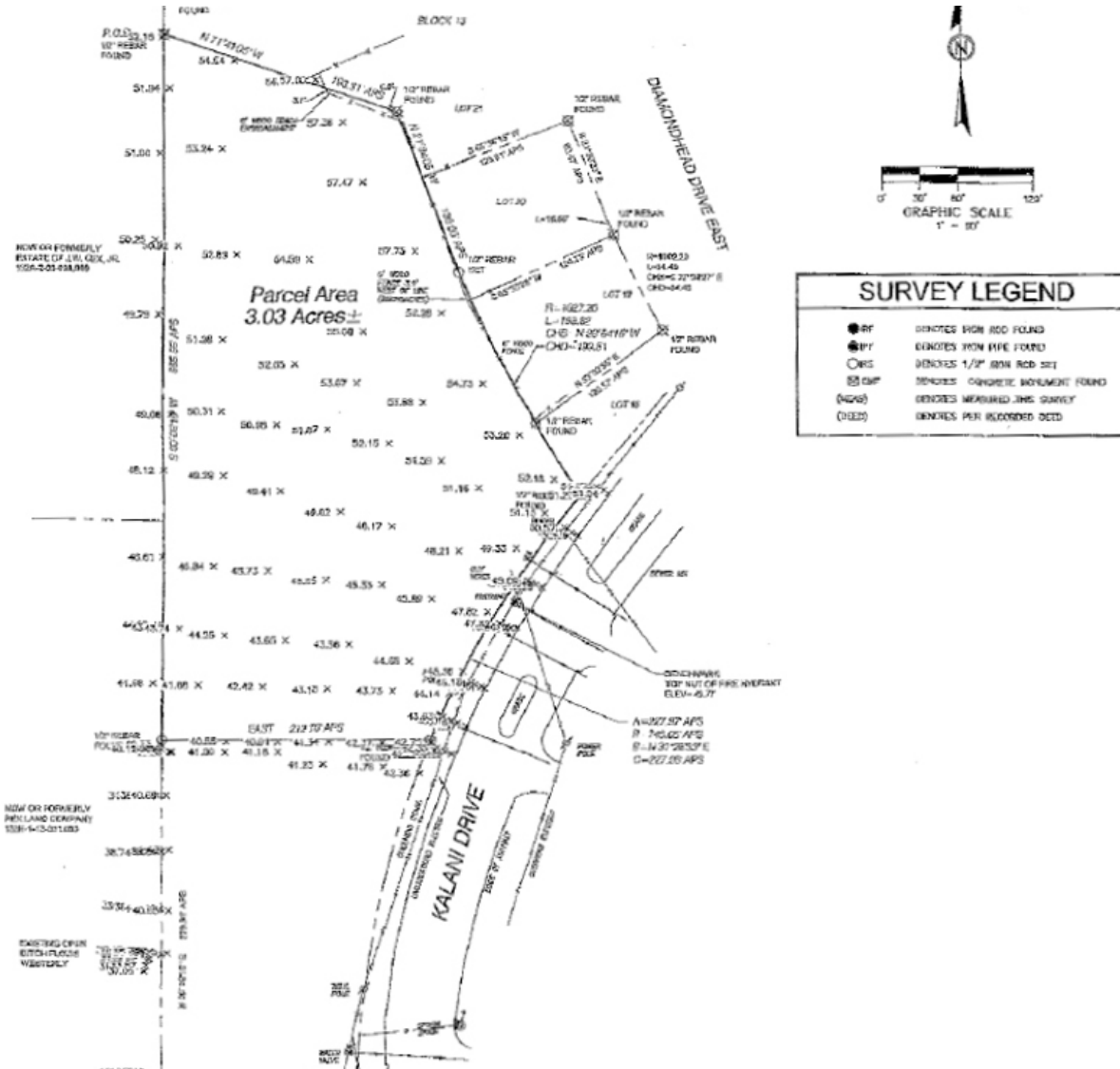
tcarlson@southeastcre.com

MONTE LUFFEY • PRINCIPAL

OFFICE: 228.276.2700

MOBILE: 228.547.1953

mluffey@southeastcre.com



LAND FOR SALE

**SURVEY**



**SOUTHEAST  
COMMERCIAL  
REAL ESTATE**



# 3.3 ACRES NEAR I-10 RAMP

Kalani Drive, Diamondhead, MS 39525

TIM CARLSON • PRINCIPAL

OFFICE: 228.276.2700

MOBILE: 228.547.0707

tcarlson@southeastcre.com

MONTE LUFFEY • PRINCIPAL

OFFICE: 228.276.2700

MOBILE: 228.547.1953

mluffey@southeastcre.com

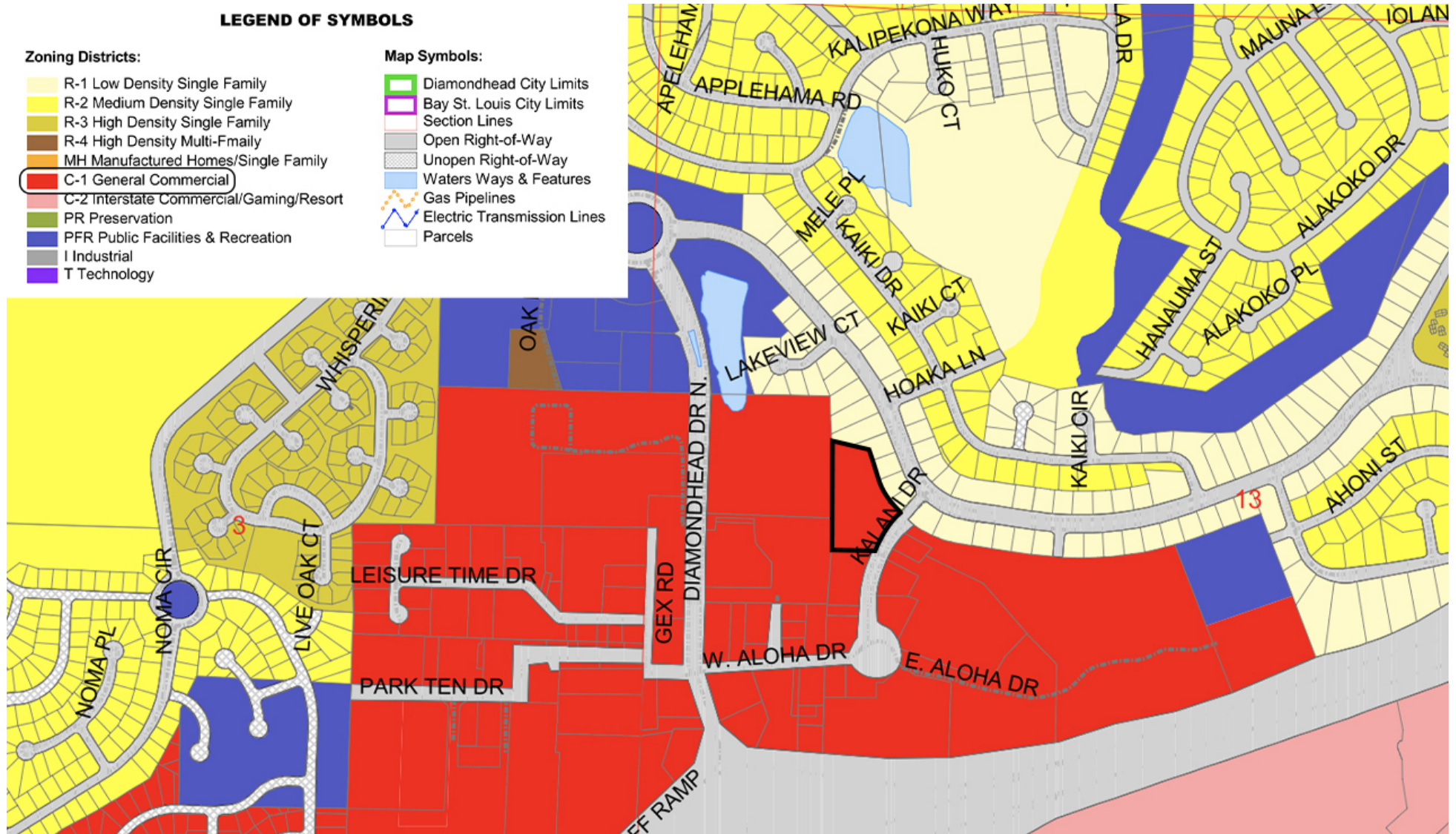
## LEGEND OF SYMBOLS

### Zoning Districts:

- R-1 Low Density Single Family
- R-2 Medium Density Single Family
- R-3 High Density Single Family
- R-4 High Density Multi-Family
- MH Manufactured Homes/Single Family
- C-1 General Commercial
- C-2 Interstate Commercial/Gaming/Resort
- PR Preservation
- PFR Public Facilities & Recreation
- I Industrial
- T Technology

### Map Symbols:

- Diamondhead City Limits
- Bay St. Louis City Limits
- Section Lines
- Open Right-of-Way
- Unopen Right-of-Way
- Waters Ways & Features
- Gas Pipelines
- Electric Transmission Lines
- Parcels



LAND FOR SALE

ZONING MAP



SOUTHEAST  
COMMERCIAL  
REAL ESTATE



# 3.3 ACRES NEAR I-10 RAMP

Kalani Drive, Diamondhead, MS 39525

TIM CARLSON • PRINCIPAL

OFFICE: 228.276.2700

MOBILE: 228.547.0707

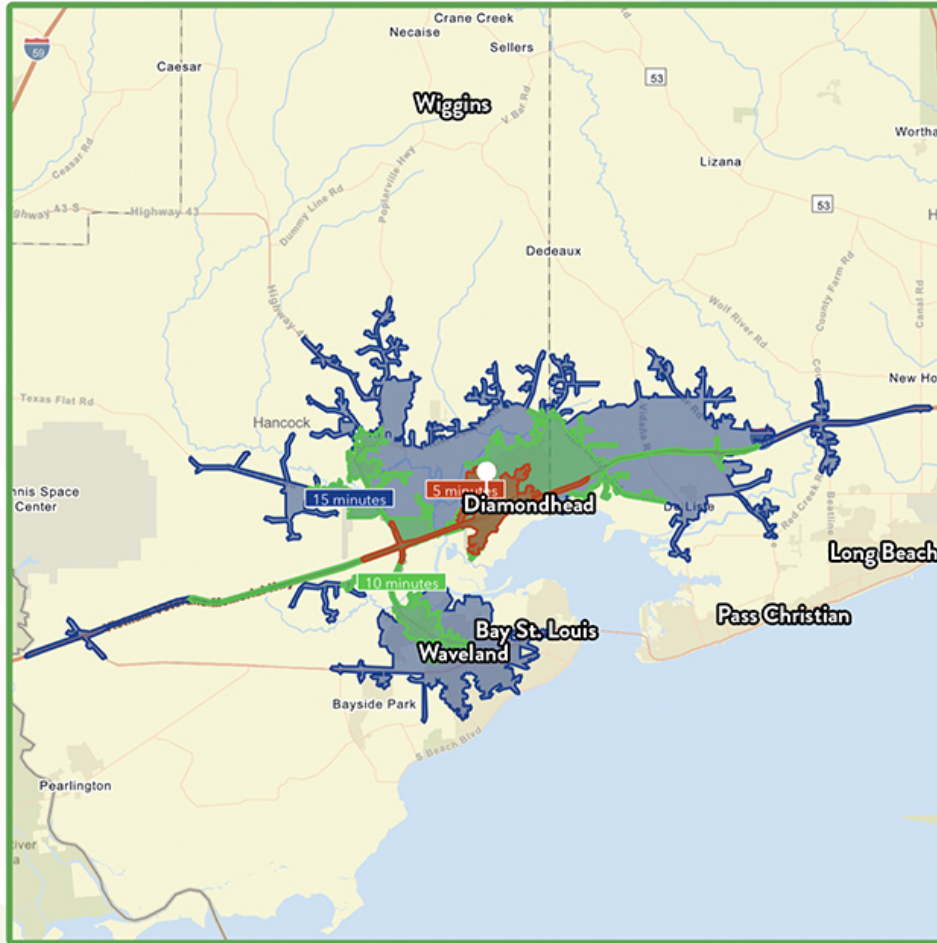
tcarlson@southeastcre.com

MONTE LUFFEY • PRINCIPAL

OFFICE: 228.276.2700

MOBILE: 228.547.1953

mluffey@southeastcre.com



**\$82,410**

Average Household Income within 15 minutes of site.



**45**

Median Age Within 15 minutes of site.



**11,844**

Number of housing units within 15 minutes of site.

2022 Demographics	5 Minutes	10 Minutes	15 Minutes
Population	2,953	11,030	23,661
Average HH Income	\$111,184	\$96,829	\$82,410
2027 Projections	5 Minutes	10 Minutes	15 Minutes
Population	2,970	11,165	23,795
Average HH Income	\$125,485	\$111,005	\$95,118

### Travel Time to Site

- 5 Minutes
- 10 Minutes
- 15 Minutes

LAND FOR SALE

## AREA DEMOGRAPHICS



**SOUTHEAST  
COMMERCIAL  
REAL ESTATE**