

FOR LEASE

OFFICE BUILDING



16 COMMERCE BLVD

16 COMMERCE BOULEVARD, MIDDLEBOROUGH, MA 02346

For More Information

DAVE ELLIS

781.919.0800 x701
dave@ellisrealtyadvisors.com



16 COMMERCE BLVD



PROPERTY DESCRIPTION

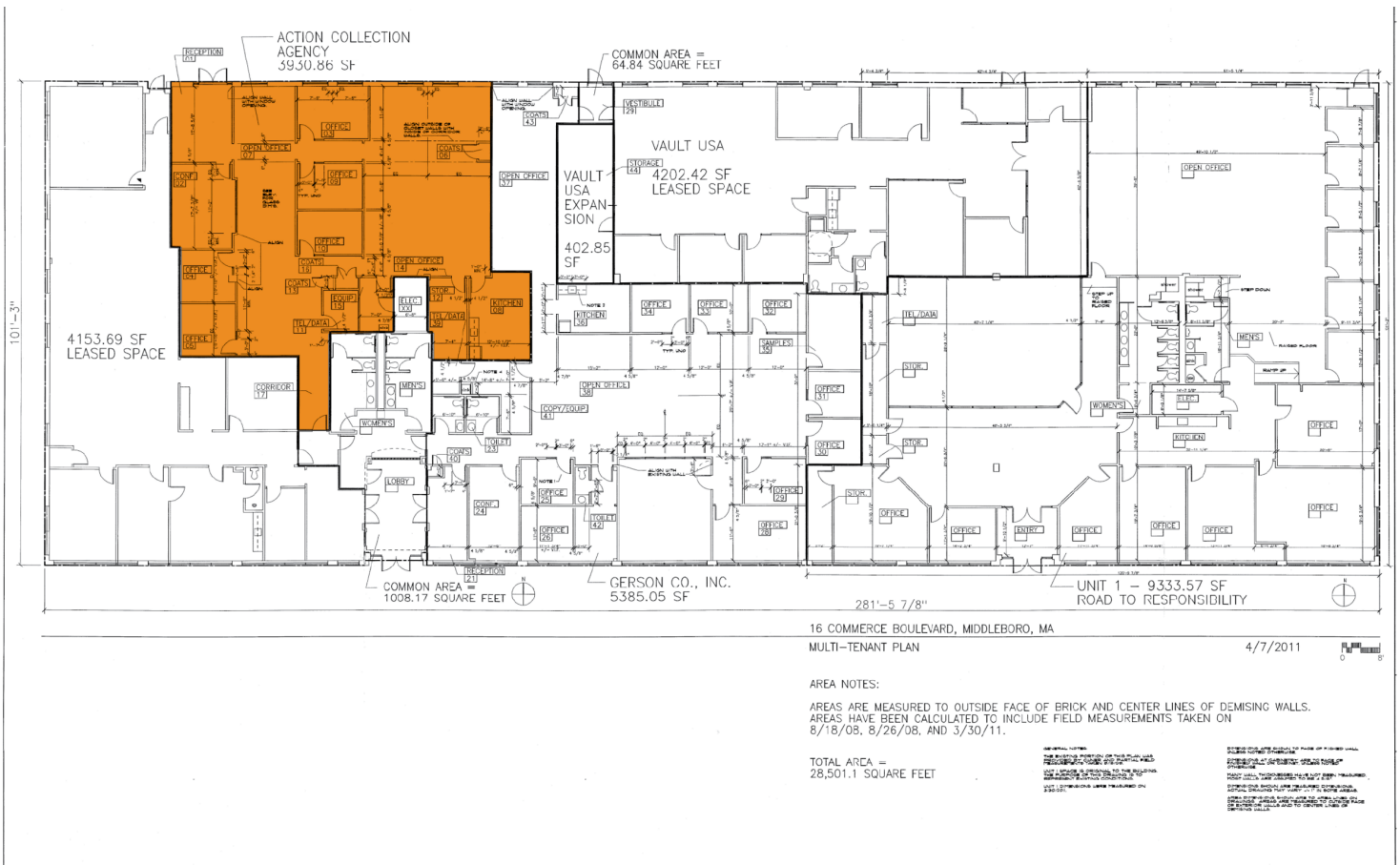
First floor medical/office or R&D space available for lease. Flexible space plan for office, medical or R&D. Excellent potential in a growing commercial area of the 495 South Submarket. Located in the center of Middleborough Park @ 495, with a large new and expanding Amazon Hub next door. Recent upgrades to roof, HVAC, and parking lot.

OFFERING SUMMARY

Lease Rate:	\$25.00 SF/yr (MG)
Available SF:	1,500 - 3,500 SF
Lot Size:	3.19 Acres
Building Size:	27,958 SF

DEMOGRAPHICS	1 MILE	3 MILES	5 MILES
Total Households	469	6,545	16,578
Total Population	1,267	16,482	43,726
Average HH Income	\$136,585	\$104,546	\$110,502

16 COMMERCE BLVD



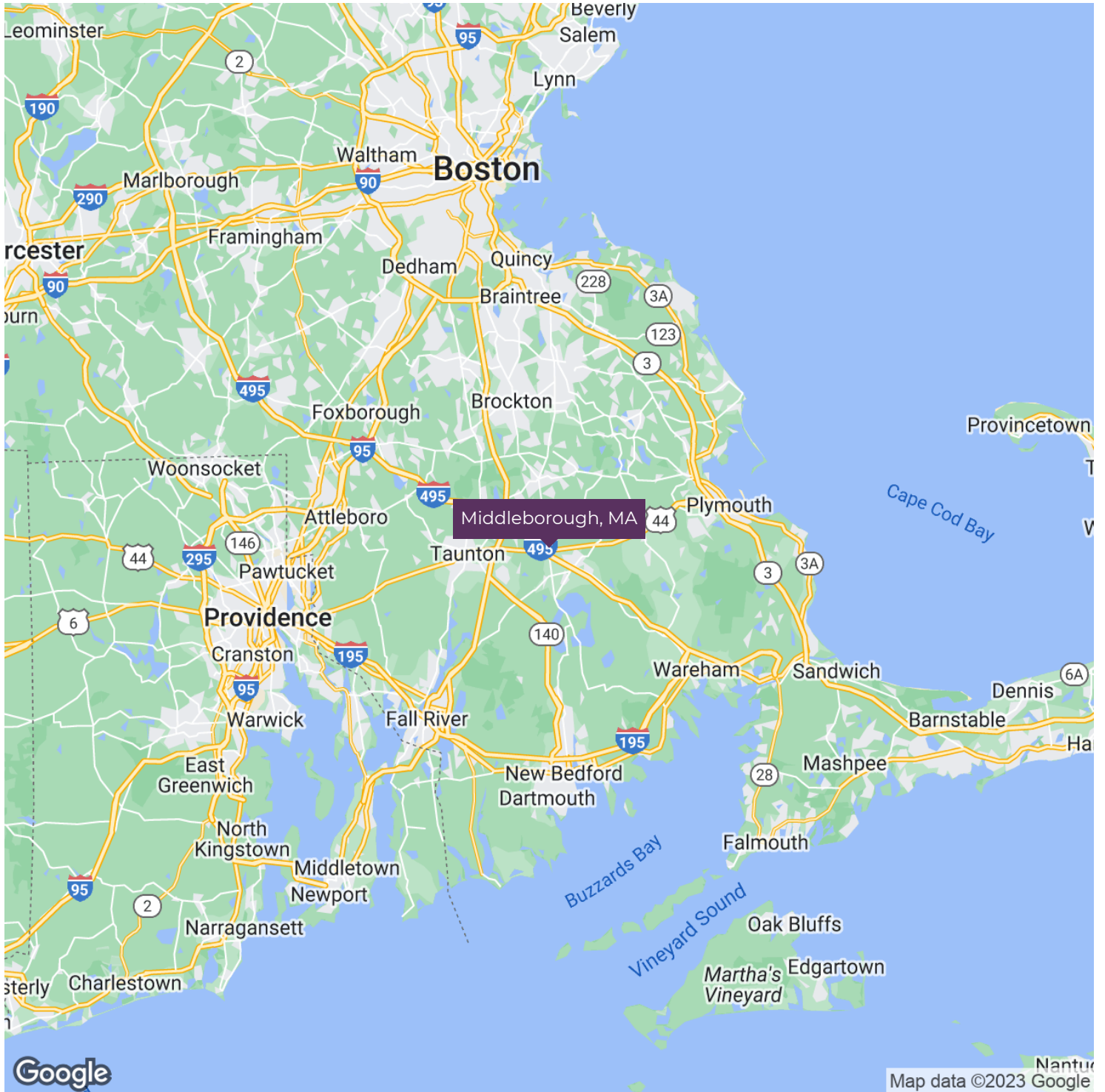
16 COMMERCE BLVD



Logistical Details

-  ----- 2 Minute Drive Via Commerce Blvd
-  ----- 2 Minute Drive Via Commerce Blvd
-  ----- 2 Minute Drive Via Commerce Blvd
-  ----- 3 Minute Drive Via Commerce Blvd

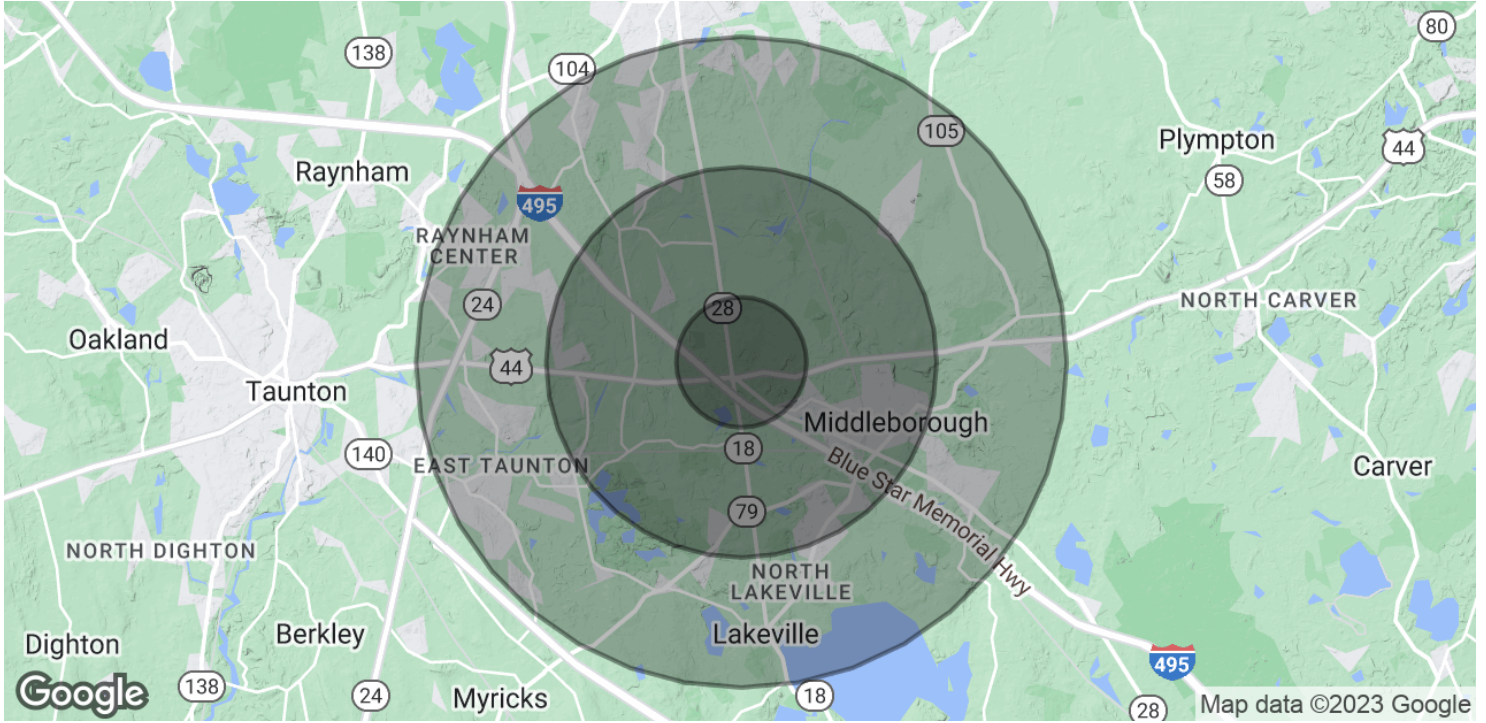
16 COMMERCE BLVD



DAVE ELLIS

781.919.0800 x701
dave@ellisrealtyadvisors.com

16 COMMERCE BLVD



POPULATION	1 MILE	3 MILES	5 MILES
Total Population	1,267	16,482	43,726
Average Age	39.0	41.2	42.8
Average Age (Male)	32.2	38.8	41.4
Average Age (Female)	43.9	43.5	44.9
HOUSEHOLDS & INCOME	1 MILE	3 MILES	5 MILES
Total Households	469	6,545	16,578
# of Persons per HH	2.7	2.5	2.6
Average HH Income	\$136,585	\$104,546	\$110,502
Average House Value	\$364,348	\$338,479	\$345,740

* Demographic data derived from 2020 ACS - US Census