



## Excellent Visibility and Location

- Excellent office, retail, call center, or restaurant. +/- 6,710 SF available.
- At intersection of two 4 lane highways (Stratford Rd. & Silas Creek Pkwy.)
- One of the most prominent locations in Winston Salem, great signage available. Accessible by stoplight & ramp.
- Visibility: 81,000 Vehicles Per Day
- Abundant parking, 161 parking spaces
- Convenient access to Silas Creek Pkwy, Business I-40 and both medical centers
- Taxes, utilities & CAM FREE

**ONLY \$16.00 PSF**

For more information, contact:

**Abner Wright**

Mobile: 336-692-4422

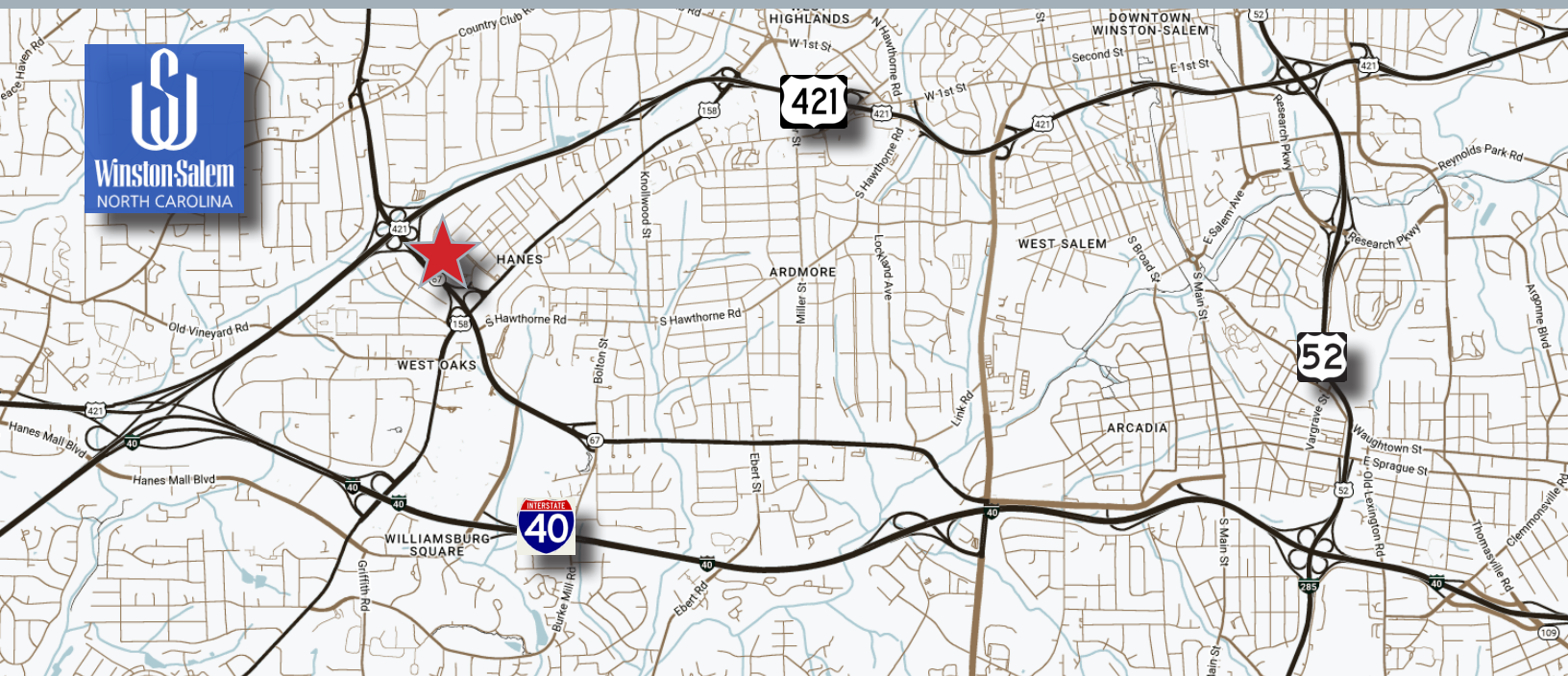
abner@freemancommercial.com

**Lee Chewing**

Mobile: 336-655-8063

lee@freemancommercial.com

No warranty or representation is made to the accuracy of the information contained herein. All information is subject to change or withdrawal. No liability is assumed for any inaccuracy of any information.

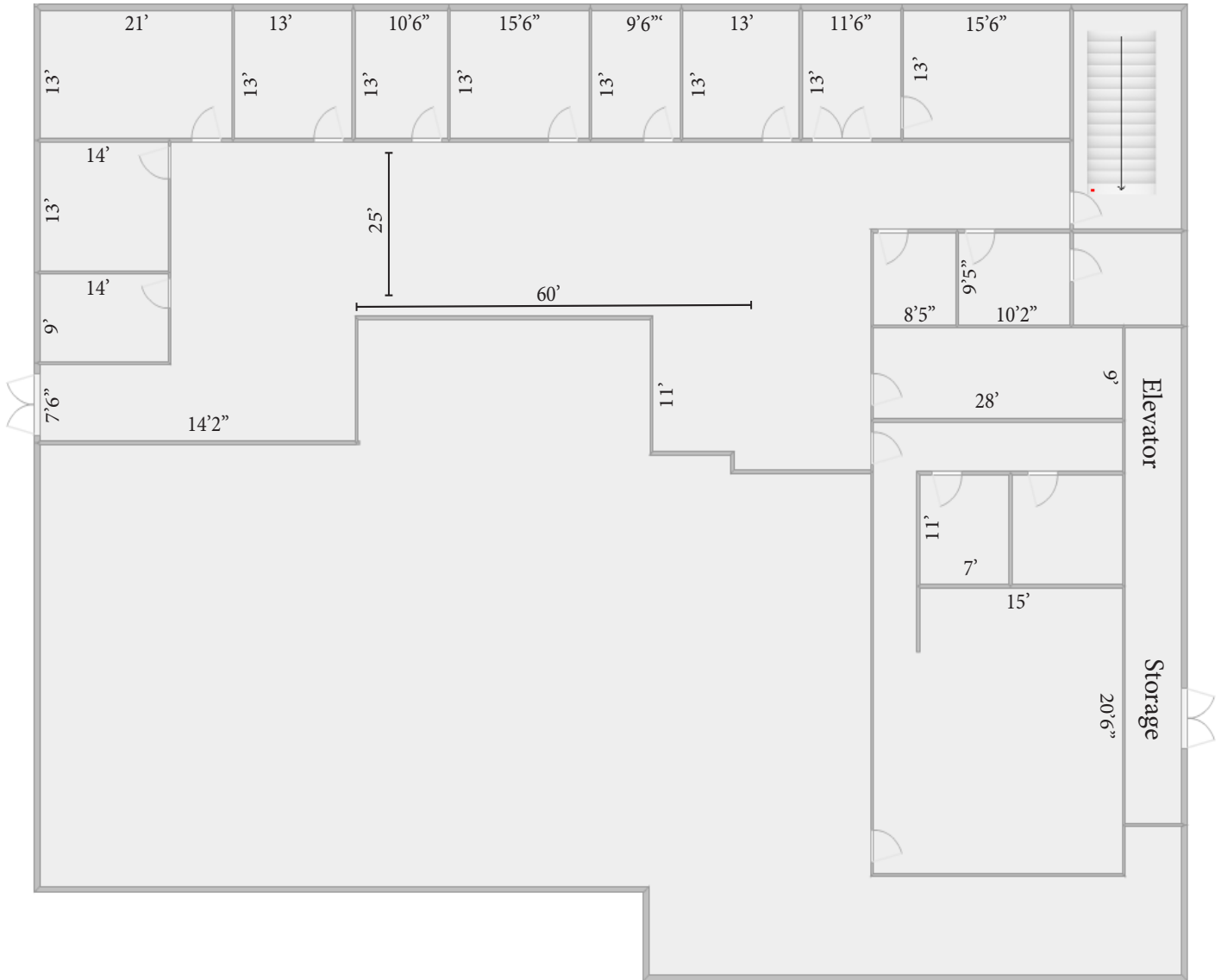


**Abner Wright**  
336-692-4422  
abner@freemancommercial.com

**Lee Chewning**  
336-655-8063  
lee@freemancommercial.com

No warranty or representation is made to the accuracy of the information contained herein. All information is subject to change or withdrawal. No liability is assumed for any inaccuracy of any information.

# Floor Plan



**Abner Wright**  
336-692-4422  
abner@freemancommercial.com

**Lee Chewing**  
336-655-8063  
lee@freemancommercial.com

No warranty or representation is made to the accuracy of the information contained herein. All information is subject to change or withdrawal. No liability is assumed for any inaccuracy of any information.