

Office Space For Lease

1703 E Skelly Dr

Tulsa, OK 74105

WIGGIN
PROPERTIES, LLC



Office Space for Lease

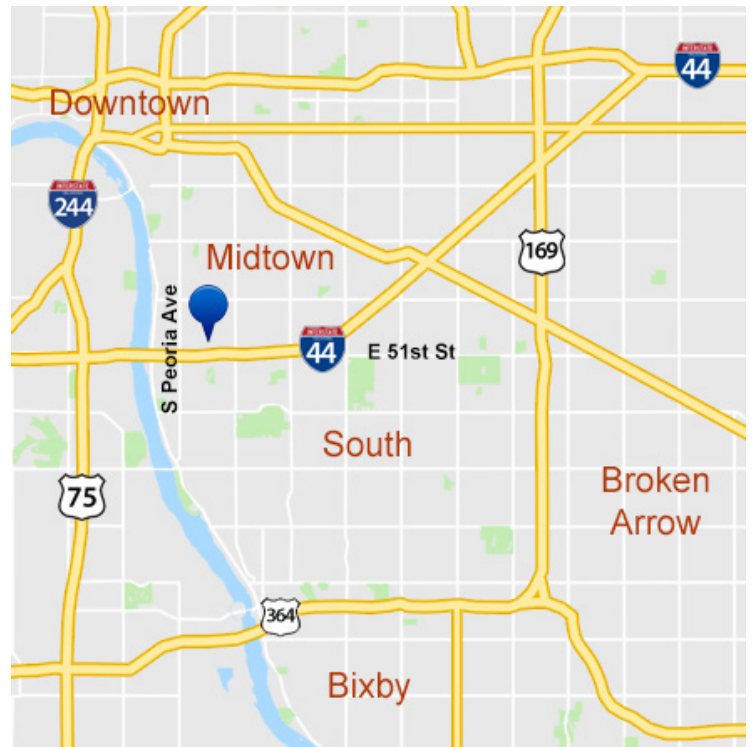
1703 E Skelly Dr

Suite 105: 723 SF
\$850 per month

Suite 107: 700 SF
\$825 per month

Highlights:

- Versatile Spaces with 24hr Access
- Monitored Security & Camera Surveillance
- Janitorial Services Included
- Internet & Phone Ready
- Common Area Kitchenette & Restrooms
- On-site Property Management
- Central Tulsa location off I-44 & S Utica Ave
- Minutes to Brookside Retail & Dining



Vicki Patterson, CCIM 918.519.6731 | Erica Cunningham 918.829.5754

vpatterson@wigginprop.com | ecunningham@wigginprop.com | wigginprop.com

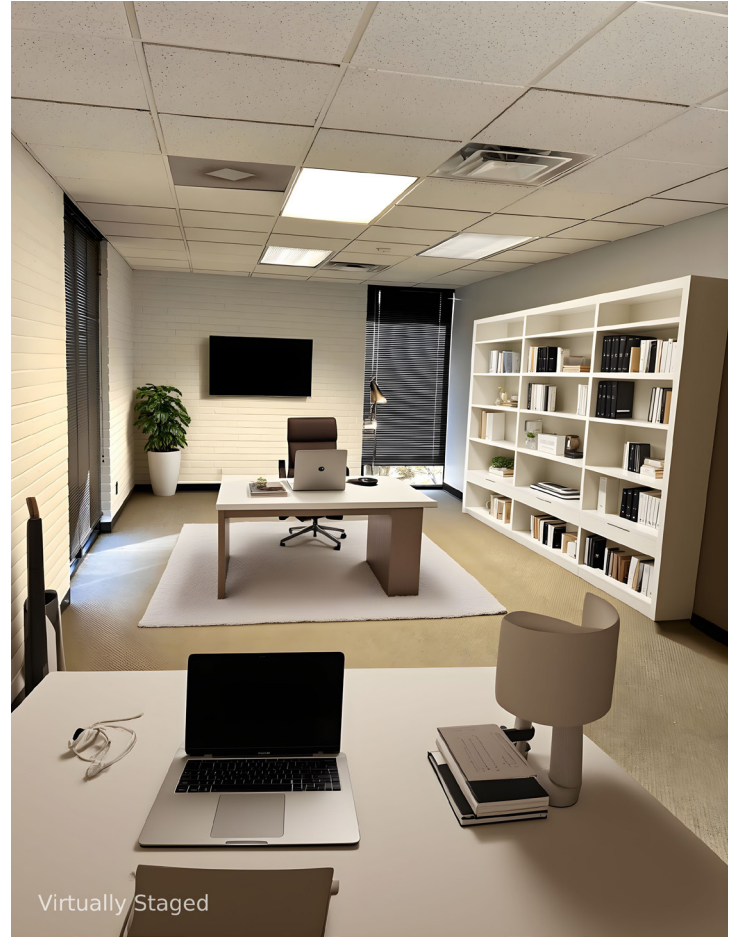
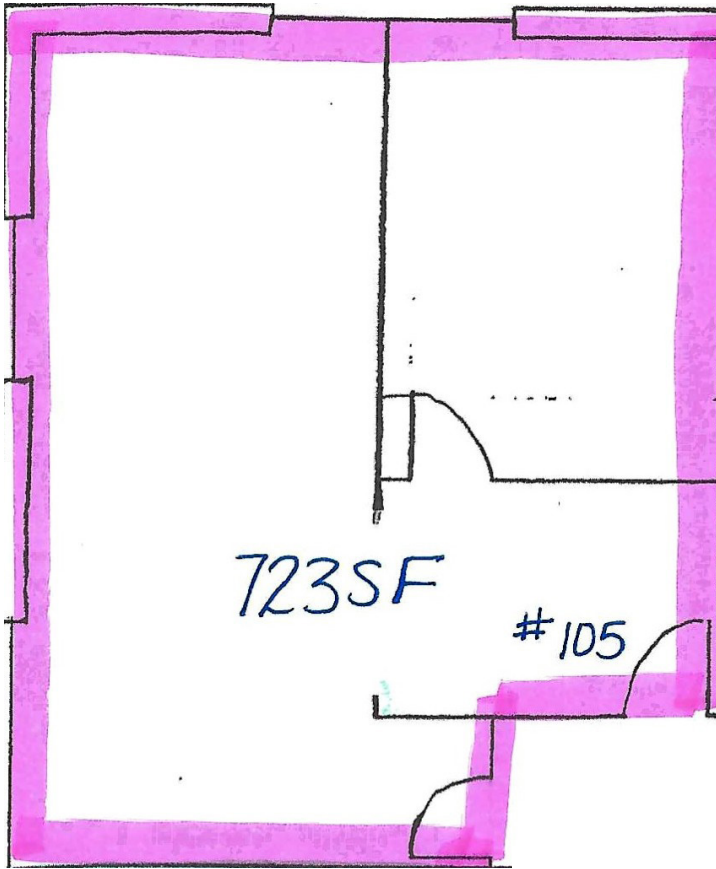
This material is provided for information purposes only. It is from sources believed to be reliable. However, Wiggin Properties makes no warranties or representations, expressed or implied, as to the accuracy or sufficiency of the information. It is presented subject to errors, omissions, changes or withdrawal without notice. Square footage is provided by the local County Assessor or the Owner. Photos and graphics with copyrights by Costar, Google, Wiggin Properties and independent contractors are used with permission.

Office Space For Lease

1703 E Skelly Dr

Tulsa, OK 74105

WIGGIN
PROPERTIES, LLC



Vicki Patterson, CCIM 918.519.6731 | Erica Cunningham 918.829.5754

vpatterson@wiggprop.com | ecunningham@wiggprop.com | wiggprop.com

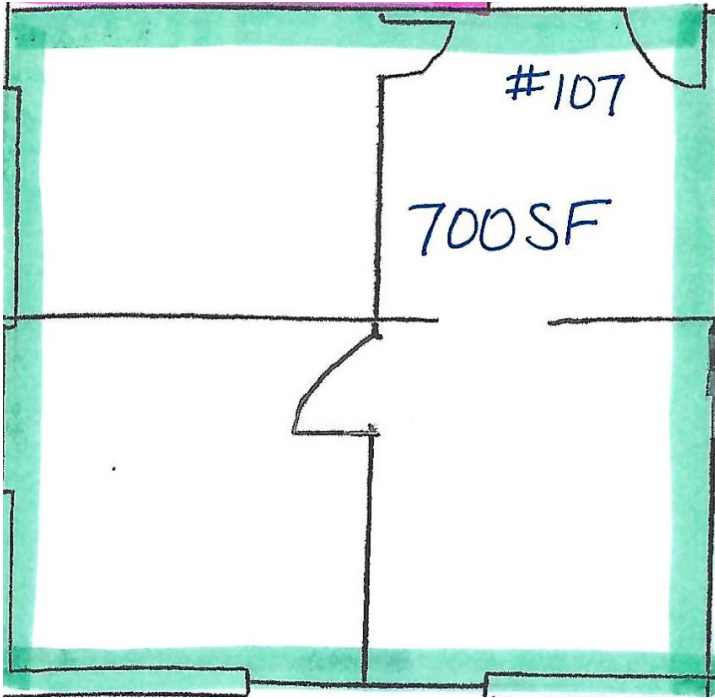
This material is provided for information purposes only. It is from sources believed to be reliable. However, Wiggin Properties makes no warranties or representations, expressed or implied, as to the accuracy or sufficiency of the information. It is presented subject to errors, omissions, changes or withdrawal without notice. Square footage is provided by the local County Assessor or the Owner. Photos and graphics with copyrights by Costar, Google, Wiggin Properties and independent contractors are used with permission.

Office Space For Lease

1703 E Skelly Dr

Tulsa, OK 74105

WIGGIN
PROPERTIES, LLC



Vicki Patterson, CCIM 918.519.6731 | Erica Cunningham 918.829.5754

vpatterson@wiggprop.com | ecunningham@wiggprop.com | wiggprop.com

This material is provided for information purposes only. It is from sources believed to be reliable. However, Wiggin Properties makes no warranties or representations, expressed or implied, as to the accuracy or sufficiency of the information. It is presented subject to errors, omissions, changes or withdrawal without notice. Square footage is provided by the local County Assessor or the Owner. Photos and graphics with copyrights by Costar, Google, Wiggin Properties and independent contractors are used with permission.