

# Opportunity for Independent Contractors!

199 North Woodbury Road, Pitman, NJ 08071



## DEMOGRAPHICS

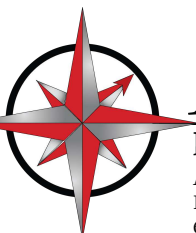
	1 MILE	3 MILES	5 MILES
Population	8,281	50,737	113,433
Average HHI	\$88,849	\$104,649	\$103,293
Employees	4,233	18,435	45,215
Total Businesses	436	1,922	4,543

## LOCATION OVERVIEW

Building located on heavily trafficked road. Easy access to 55, 47, Hurffville-Cross Keys Road, and Philadelphia. Close proximity to Pitman, Glassboro, Washington Twp and Rowan University

## PROPERTY HIGHLIGHTS

- Professional office space available for lease
- Full service leases
- On-site parking
- Pylon signage available



**ARROW**

Real Estate Services

**TCN**  
WORLDWIDE  
REAL ESTATE SERVICES

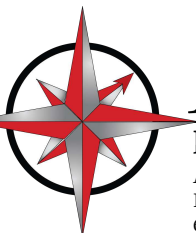
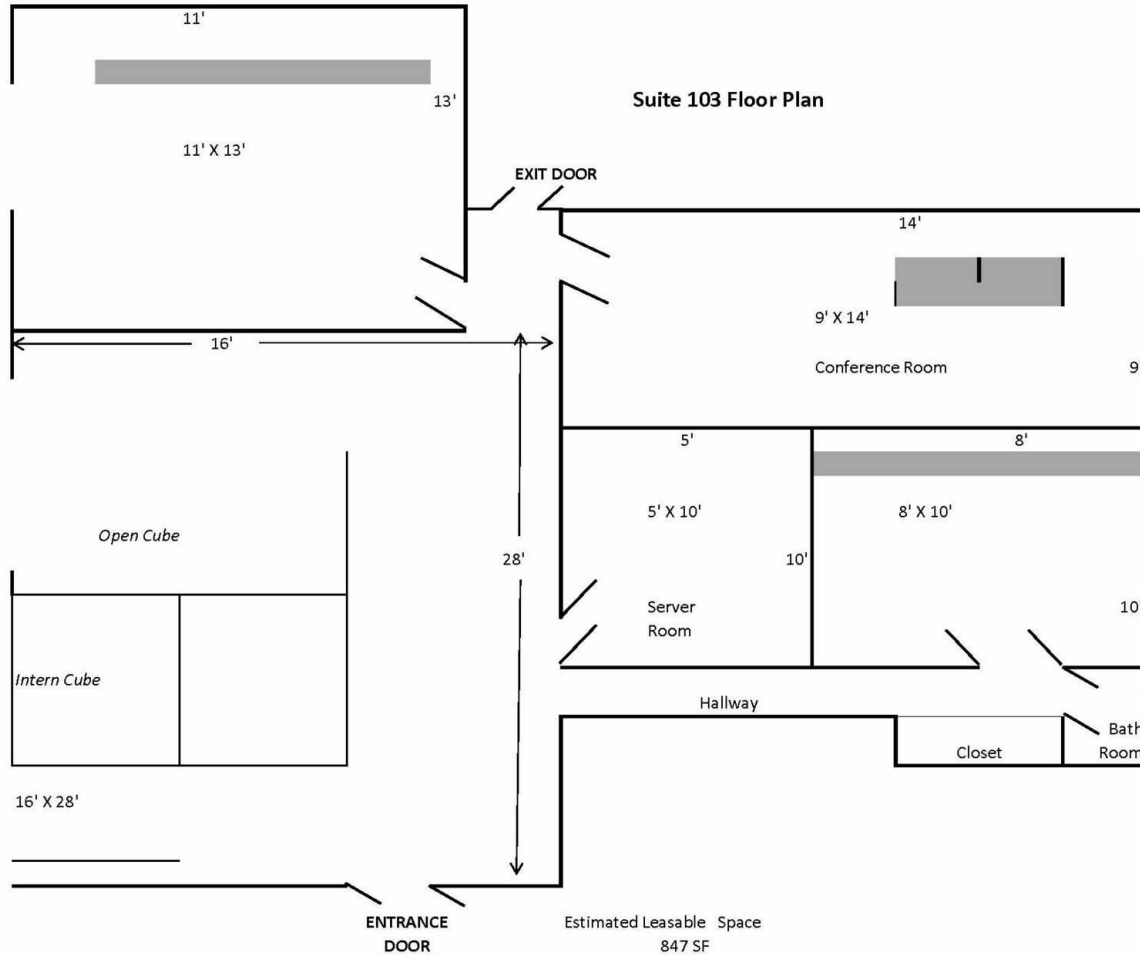
Admin: 717 Limekiln Road, Doylestown, PA 18901  
HQ: 555 E. City Line Ave, Bala Cynwyd, PA 19004  
610.400.3018 | ArrowRealEstateServices.com

**TAMMY RATTACASA**

856.392.3735

TammyR@arrowcre.com

199 North Woodbury Road, Pitman, NJ 08071



**ARROW**

Real Estate Services

Admin: 717 Limekiln Road, Doylestown, PA 18901  
HQ: 555 E. City Line Ave, Bala Cynwyd, PA 19004  
610.400.3018 | ArrowRealEstateServices.com



**TAMMY RATTACASA**

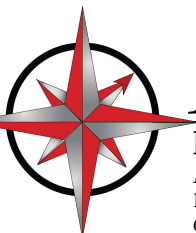
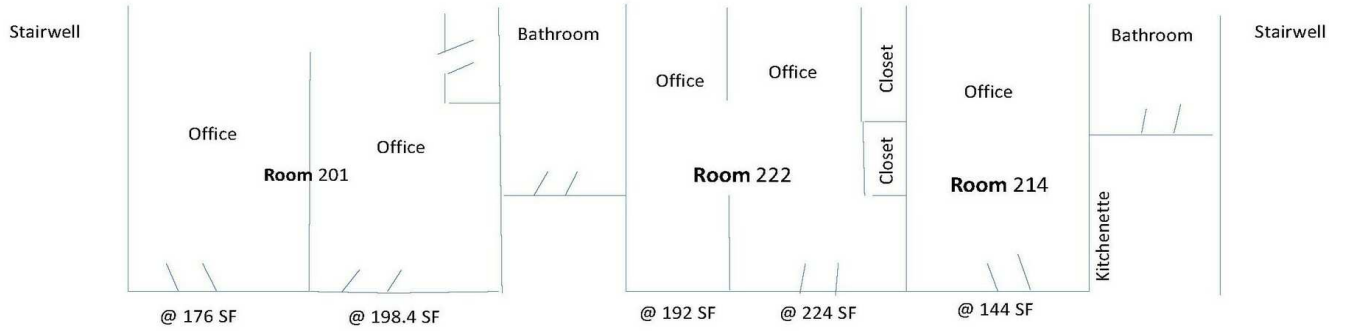
856.392.3735

TammyR@arrowcre.com

# Opportunity for Independent Contractors!

## 2nd Floor Plan

199 North Woodbury Road, Pitman, NJ 08071



**ARROW**

Real Estate Services

Admin: 717 Limekiln Road, Doylestown, PA 18901  
HQ: 555 E. City Line Ave, Bala Cynwyd, PA 19004  
610.400.3018 | ArrowRealEstateServices.com



**TAMMY RATTACASA**

856.392.3735

TammyR@arrowcre.com

# Opportunity for Independent Contractors!

199 North Woodbury Road, Pitman, NJ 08071



**ARROW**

Real Estate Services



Admin: 717 Limekiln Road, Doylestown, PA 18901  
HQ: 555 E. City Line Ave, Bala Cynwyd, PA 19004  
610.400.3018 | ArrowRealEstateServices.com

**TAMMY RATTACASA**

856.392.3735

TammyR@arrowcre.com