



# OPES COMMERCIAL REAL ESTATE



**13949 M 350 Highway  
Kansas City, Missouri 64139**

**FOR SALE  
\$285,000.00**

NATE PRATHER

816-268-4483

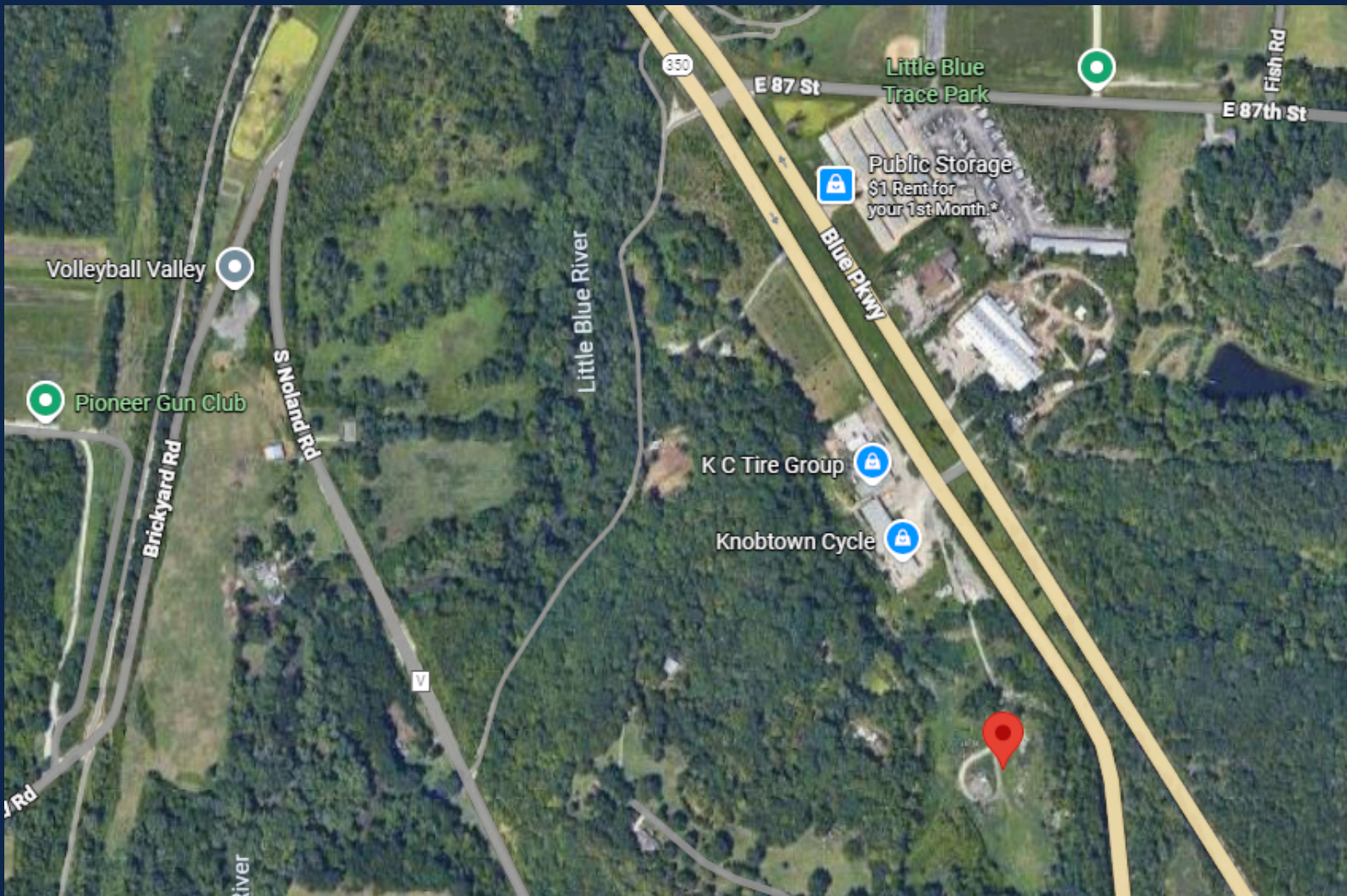
[NTPRATHER@OPESCRE.COM](mailto:NTPRATHER@OPESCRE.COM)

\*Although every reasonable effort is made to present current and accurate information, Opes Commercial Real Estate makes no guarantees of any kind\*



# PROPERTY FEATURES:

- Excellent opportunity for land in Kansas City, Missouri
- 13.09 +/- acres for sale
- Excellent access to and from 350 Highway
- Zoned R-80 - some commercial uses are permitted
- More than 20,000 cars per day on 350 Highway



NATE PRATHER

816-268-4483

[NTPRATHER@OPESCRE.COM](mailto:NTPRATHER@OPESCRE.COM)