

# THE PACIFIC BUILDING

227 NORTH BROADWAY // SANTA ANA, CALIFORNIA

*For Lease*

Chapter One:  
the modern local

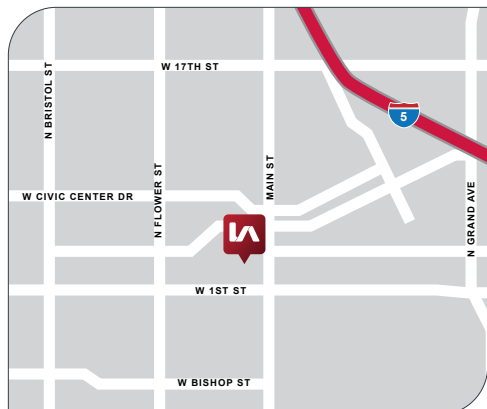
PACIFIC





# THE PACIFIC BUILDING

227 NORTH BROADWAY // SANTA ANA, CALIFORNIA



## Property Highlights

- » Top Floor Suites Available:
  - Unit 201 +610 PSF / Available on April 1, 2024
  - Unit 203 +260 SF / Now Available
  - Unit 204 ±260 SF / Now Available

---

- » Rates: Suite 201 \$3.00 PSF / Suite 203 \$3.15 MG / Suite 204 \$3.15 MG

---

- » Term: 3-5 Year Lease

---

- » Located In the Heart of Downtown Santa Ana

---

- » Within Walking Distance To Plentiful Entertainment, Retail, Restaurants, And Other Amenities

---

- » OC Streetcar Accessible

---

- » Minutes Away From 5 and 55 Freeways

---

- » Strong Demographics & High Traffic Counts


---

- » **SUITE 204 - CLICK HERE TO VIEW 3D MATTERPORT TOUR**

DISCLAIMER: The information contained herein has been obtained from the property owner or other third party and is provided to you without verification as to accuracy. We (Lee & Associates, its brokers, employees, agents, principals, officers, directors and affiliates) make no warranty or representation regarding the information, property, or transaction. You and your attorneys, advisors and consultants should conduct your own investigation of the property and transaction. 01.22.24

Local Expertise. International Reach. World Class.

**NOEL AGUIRRE** T: (562)354-2526  
Principal | DRE#: 01263417 E: naguirre@leelalb.com



**Lee & Associates Los Angeles-Long Beach, Inc.**  
5000 East Spring Street, Suite 600 | Long Beach, California 90815  
PH: (562)354-2500 | www.lee-associates.com   

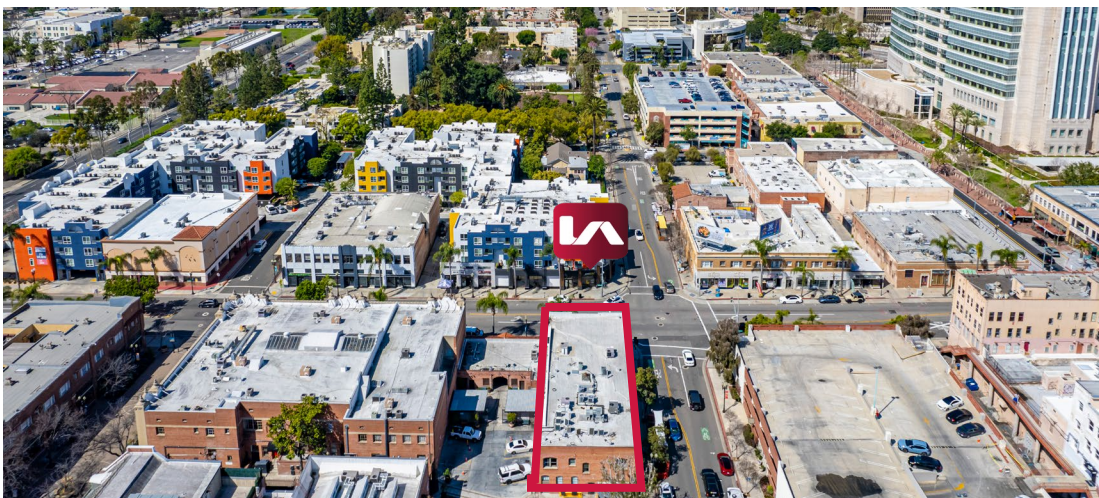
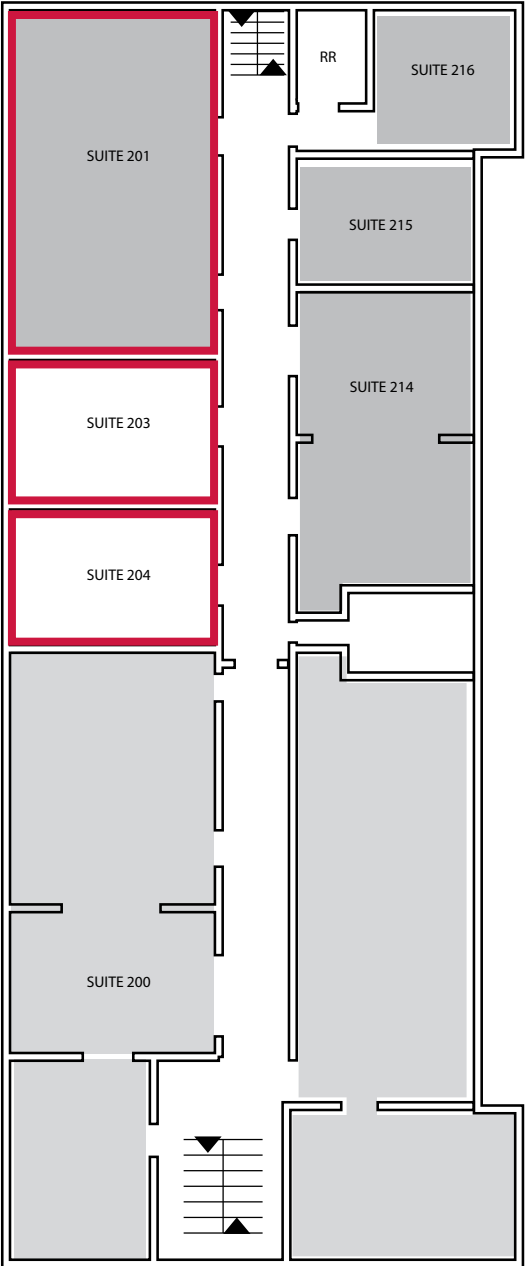


# THE PACIFIC BUILDING

227 NORTH BROADWAY // SANTA ANA, CALIFORNIA

## Floor Plan (Not to Scale)

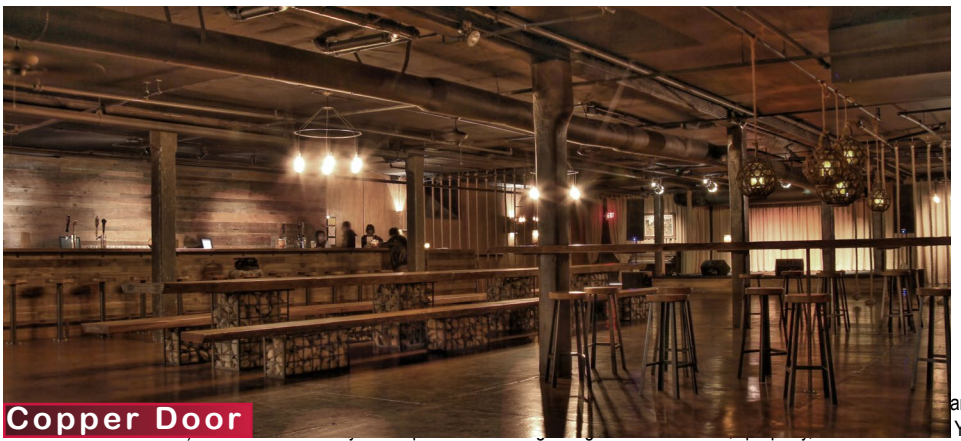
 AVAILABLE  
 LEASED





# THE PACIFIC BUILDING

227 NORTH BROADWAY // SANTA ANA, CALIFORNIA



Local Expertise. International Reach. World Class.

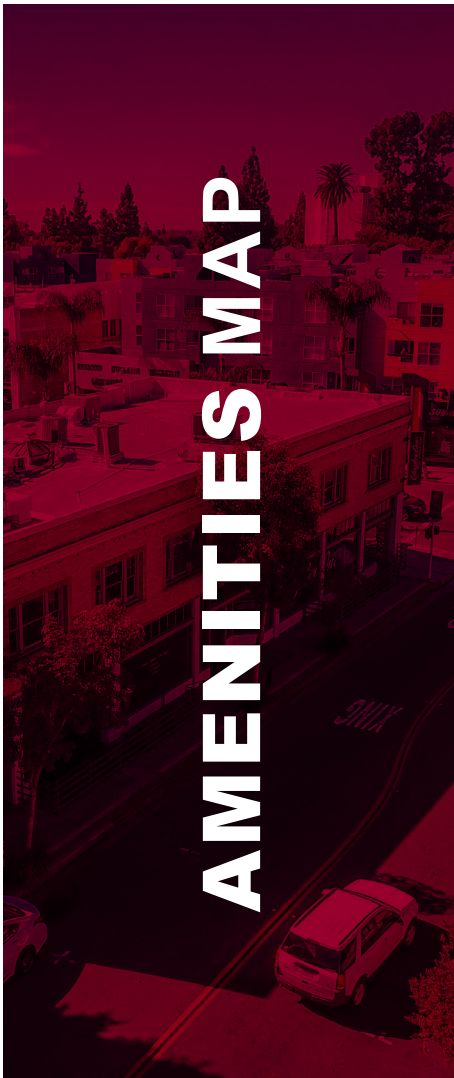
**NOEL AGUIRRE** T: (562)354-2526  
Principal | DRE#: 01263417 E: [naguirre@leelalb.com](mailto:naguirre@leelalb.com)

**Lee & Associates Los Angeles-Long Beach, Inc.**  
5000 East Spring Street, Suite 600 | Long Beach, California 90815  
PH: (562)354-2500 | [www.lee-associates.com](http://www.lee-associates.com)   



# THE PACIFIC BUILDING

227 NORTH BROADWAY // SANTA ANA, CALIFORNIA



DISCLAIMER: The information contained herein has been obtained from the property owner or other third party and is provided to you without verification as to accuracy. We (Lee & Associates, its brokers, employees, agents, principals, officers, directors and affiliates) make no warranty or representation regarding the information, property, or transaction. You and your attorneys, advisors and consultants should conduct your own investigation of the property and transaction. **01.22.24**

Local Expertise. International Reach. World Class.

**NOEL AGUIRRE** T: (562)354-2526  
Principal | DRE#: 01263417 E: [naguirre@leelalb.com](mailto:naguirre@leelalb.com)

**Lee & Associates Los Angeles-Long Beach, Inc.**  
5000 East Spring Street, Suite 600 | Long Beach, California 90815  
PH: (562)354-2500 | [www.lee-associates.com](http://www.lee-associates.com)   



# THE PACIFIC BUILDING

227 NORTH BROADWAY // SANTA ANA, CALIFORNIA



DISCLAIMER: The information contained herein has been obtained from the property owner or other third party and is provided to you without verification as to accuracy. We (Lee & Associates, its brokers, employees, agents, principals, officers, directors and affiliates) make no warranty or representation regarding the information, property, or transaction. You and your attorneys, advisors and consultants should conduct your own investigation of the property and transaction. 01.22.24

Local Expertise. International Reach. World Class.

**NOEL AGUIRRE** T: (562)354-2526  
Principal | DRE#: 01263417 E: [naguirre@leelalb.com](mailto:naguirre@leelalb.com)

**Lee & Associates Los Angeles-Long Beach, Inc.**  
5000 East Spring Street, Suite 600 | Long Beach, California 90815  
PH: (562)354-2500 | [www.lee-associates.com](http://www.lee-associates.com)   