

FOR LEASE
1,560 SF AVAILABLE



FEATURES:

- 1,560 SF End Cap Office Condo "For Lease" in downtown Plymouth, MN
- Space can be demised for any user with open area or private offices.
- Perfect for a retail / office company looking for home in Plymouth!
- Excellent signage on Plymouth Blvd near other retail and businesses.
- Future development in area by City of Plymouth (see page 3).

Lease Rate:
NEGOTIABLE

Tax - \$4.53 / psf
Cam - \$4.08 / psf



Overview	1
Aerial Maps	2
Site Plan	3
Floor Plan	4-5
Photo Gallery	6
City Information	7



Chad Weeks
612.619.9911
cweeks@arrowcos.com



Jeff Penfield
612.325.2067
jpenfield@arrowcos.com

Contact

Phone: 763.424.6355

Fax: 763.424.7980

Arrow Companies

7365 Kirkwood Court N. Suite 335

Maple Grove, MN 55369

www.arrowcos.com

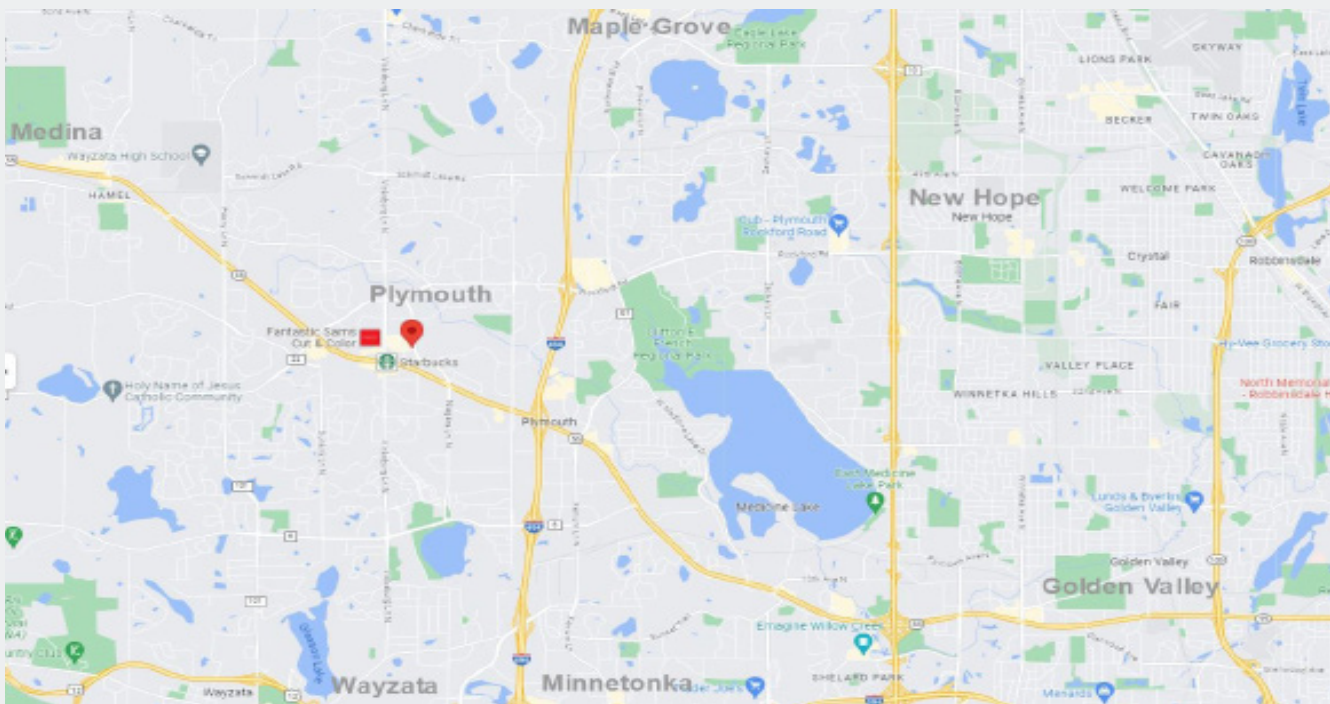
Plymouth Town Office Plaza

3545 Plymouth Blvd., Suite 113

Plymouth, MN 55447

AERIAL & MAP

FOR LEASE
1,560 SF AVAILABLE



Contact

Phone: 763.424.6355

Fax: 763.424.7980

Arrow Companies

7365 Kirkwood Court N. Suite 335

Maple Grove, MN 55369

www.arrowcos.com

SITE PLAN / ROAD IMPROVEMENTS

FOR LEASE
1,560 SF AVAILABLE



Project Overview

Plymouth Boulevard is set to undergo major improvements between Highway 55 and Rockford Road (County Road 9) beginning in May.

The project will add roundabouts to slow vehicle traffic, improve crossings for pedestrian safety, upgrade trail connectivity and more.

Construction is set to wrap up in late fall of 2024. Landscaping and other final items will be completed in 2025.

Plymouth Boulevard improvements are part of the City of Plymouth's overall, long-term plan to revitalize Plymouth City Center and cultivate a vibrant, walkable downtown area.



Future city street improvements
and new development in the area.
CLICK ON QR CODE



Contact

Phone: 763.424.6355

Fax: 763.424.7980

Arrow Companies

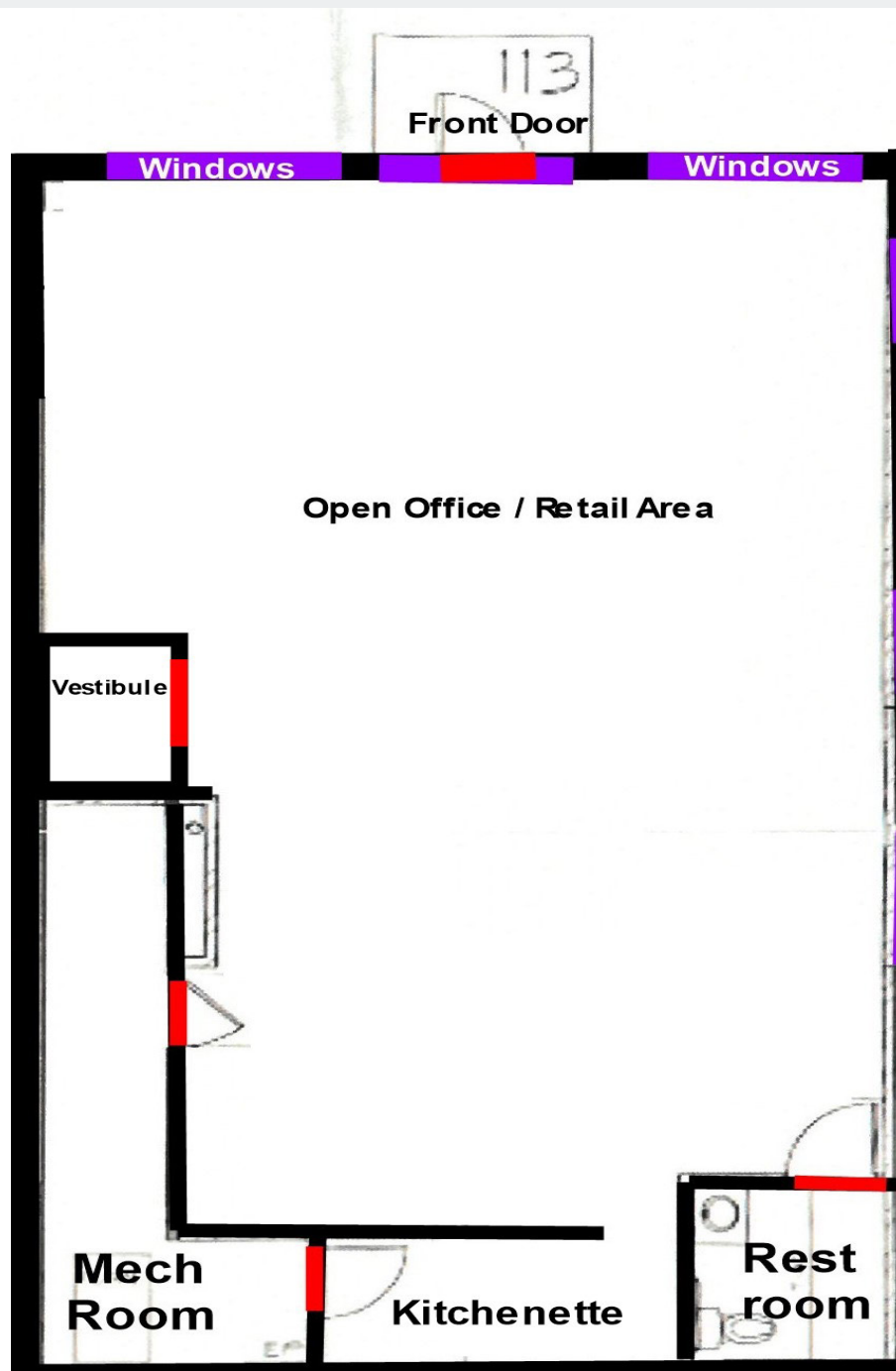
7365 Kirkwood Court N. Suite 335

Maple Grove, MN 55369

www.arrowcos.com

FLOOR PLAN

FOR LEASE
1,560 SF AVAILABLE



Contact

Phone: 763.424.6355

Fax: 763.424.7980

Arrow Companies

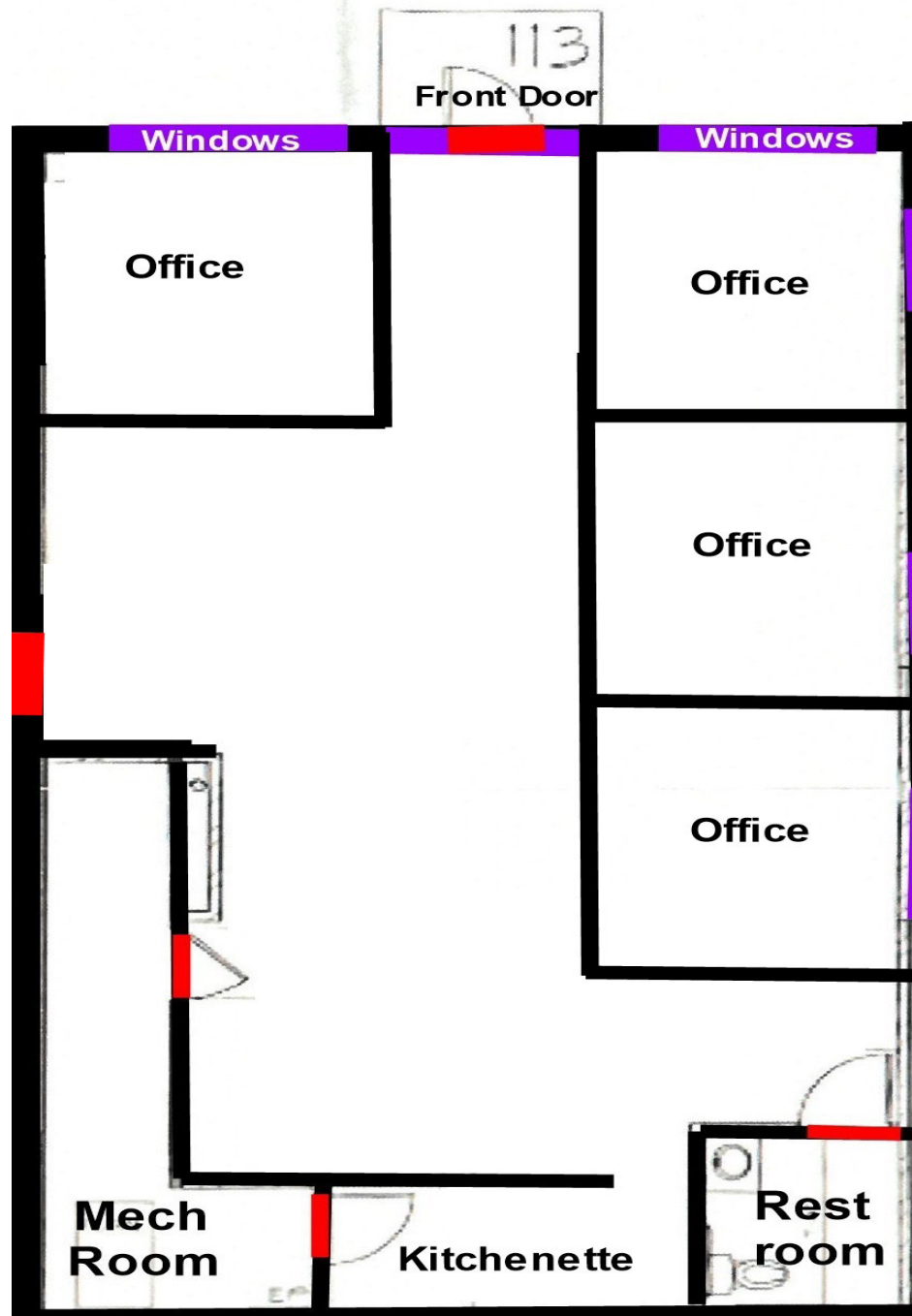
7365 Kirkwood Court N. Suite 335

Maple Grove, MN 55369

www.arrowcos.com

EXAMPLE FLOOR PLAN

FOR LEASE
1,560 SF AVAILABLE



Contact

Phone: 763.424.6355

Fax: 763.424.7980

Arrow Companies

7365 Kirkwood Court N. Suite 335

Maple Grove, MN 55369

www.arrowcos.com



Plymouth Town Office Plaza

3545 Plymouth Blvd., Suite 113

Plymouth, MN 55447

PHOTO GALLERY

FOR LEASE
1,560 SF AVAILABLE



Contact

Phone: 763.424.6355

Fax: 763.424.7980

Arrow Companies

7365 Kirkwood Court N. Suite 335

Maple Grove, MN 55369

www.arrowcos.com



Plymouth Town Office Plaza

3545 Plymouth Blvd., Suite 113

Plymouth, MN 55447

CITY INFORMATION

FOR LEASE
1,560 SF AVAILABLE

POPULATION (5 MILE RADIUS)	2010 Census - 132,172 2024 (Estimate) - 148,409 2029 (Projection) - 146,291
AVERAGE HOUSEHOLD INCOME	2024 - \$144,923 (5 miles)
TRAFFIC	Plymouth Blvd - 10,016 vehicles per day Hwy. 55 - 40,127 vehicles per day
CITY OF PLYMOUTH	<p>Plymouth is home to a vibrant business community. From small start up companies to major corporations, you will find them in Plymouth. Our diverse economic base includes nearly 50,000 jobs. Major industries include insurance, high tech research, medical devices and light manufacturing as well as printing and publishing.</p> <p>Nationally recognized for its quality of life, Plymouth is located 12 miles northwest of Minneapolis. It offers:</p> <ul style="list-style-type: none">Extensive trails and parksPicturesque open spacesStrong neighborhoodsDiverse recreation programsHighly regarded school districtsA variety of local businessesNearby shopping and entertainment districtsEasy access to downtown Minneapolis and its wide array of cultural and sports venues. <p>Best Place to Live</p> <p>Plymouth was named Money magazine's number one Best Place to Live in 2008 for cities with populations of 50,000 to 300,000. The city stayed in the top dozen when the magazine repeated the rankings in 2010.</p> <p>Location, Location, Location</p> <p>Many major highways run through or are close to Plymouth, making it readily accessible to all within the metropolitan area. Interstate 494 runs through Plymouth as does Hwy. 55. Hwy. 169 is on the city's eastern border and I-394 is within four miles from the center of Plymouth.</p>

Contact

Phone: 763.424.6355

Fax: 763.424.7980

Arrow Companies

7365 Kirkwood Court N. Suite 335

Maple Grove, MN 55369

www.arrowcos.com