

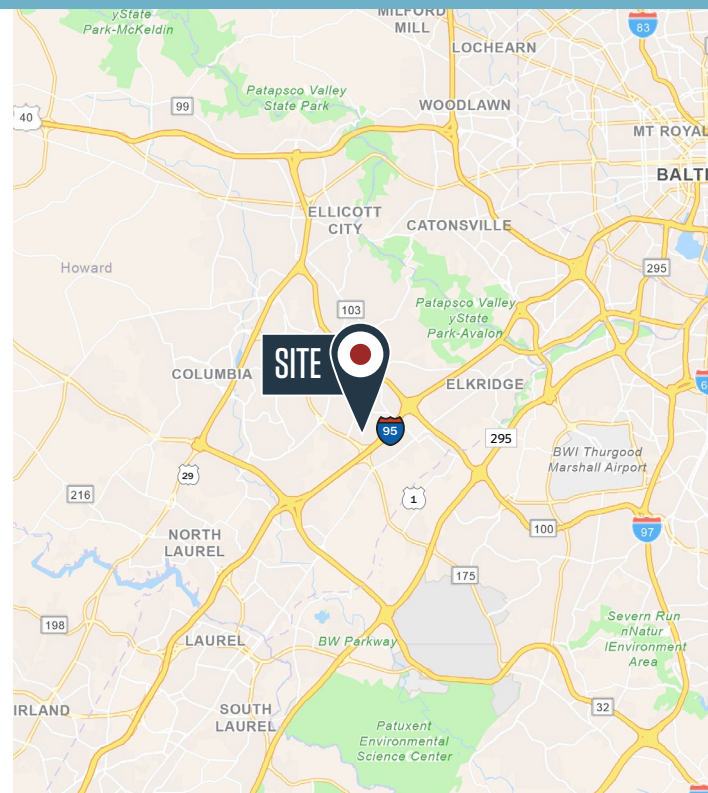
NEW LISTING!



FOR LEASE

Building Highlights

- **Building Size:** 22,433 square feet
- **Available:** » ± 12,000 SF office on 2 floors
» ± 10,000 SF of warehouse
- **Lot Size:** 1.20 acres
- **Year Built:** 1983; Upgrade in 1998
- **Construction Type:** Masonry
- **Stories:** 2
- **Ceiling Height:** 18'
- **Sprinkler System:** Wet system
- **Loading Docks:** » Five (5) 8x8 loading dock
» One (1) 10x12 loading dock
» One (1) 10x12 drive-in
- **Electrical Service:** 800 amps, 200/208 volt, 3 phase
- **HVAC:** Mix of roof top/split HVAC and gas-fired unit heaters
- **Roof:** Insulated metal deck

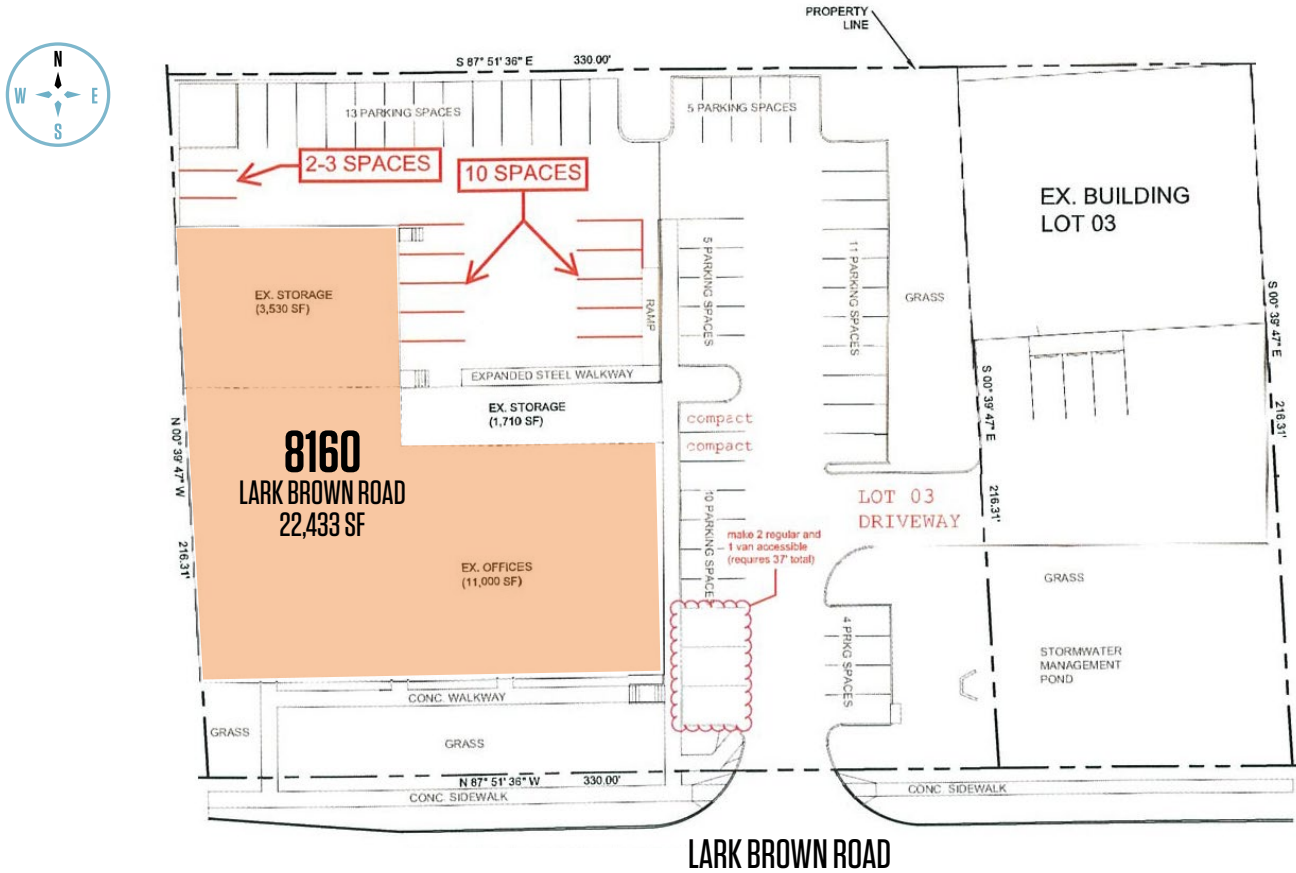


Abby Glassberg
aglassberg@klnb.com
443-574-1433

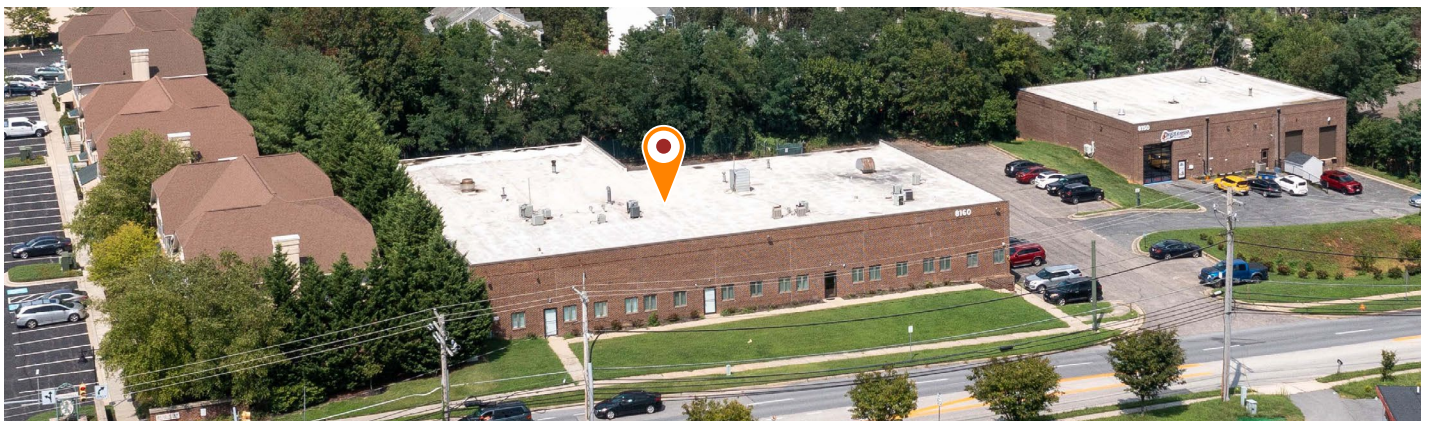
Aaron Carroll
acarroll@klnb.com
202-652-2333

9881 Broken Land Pkwy, #300
Columbia, MD 21046
klnb.com

PARKING POTENTIAL



AERIAL VIEW

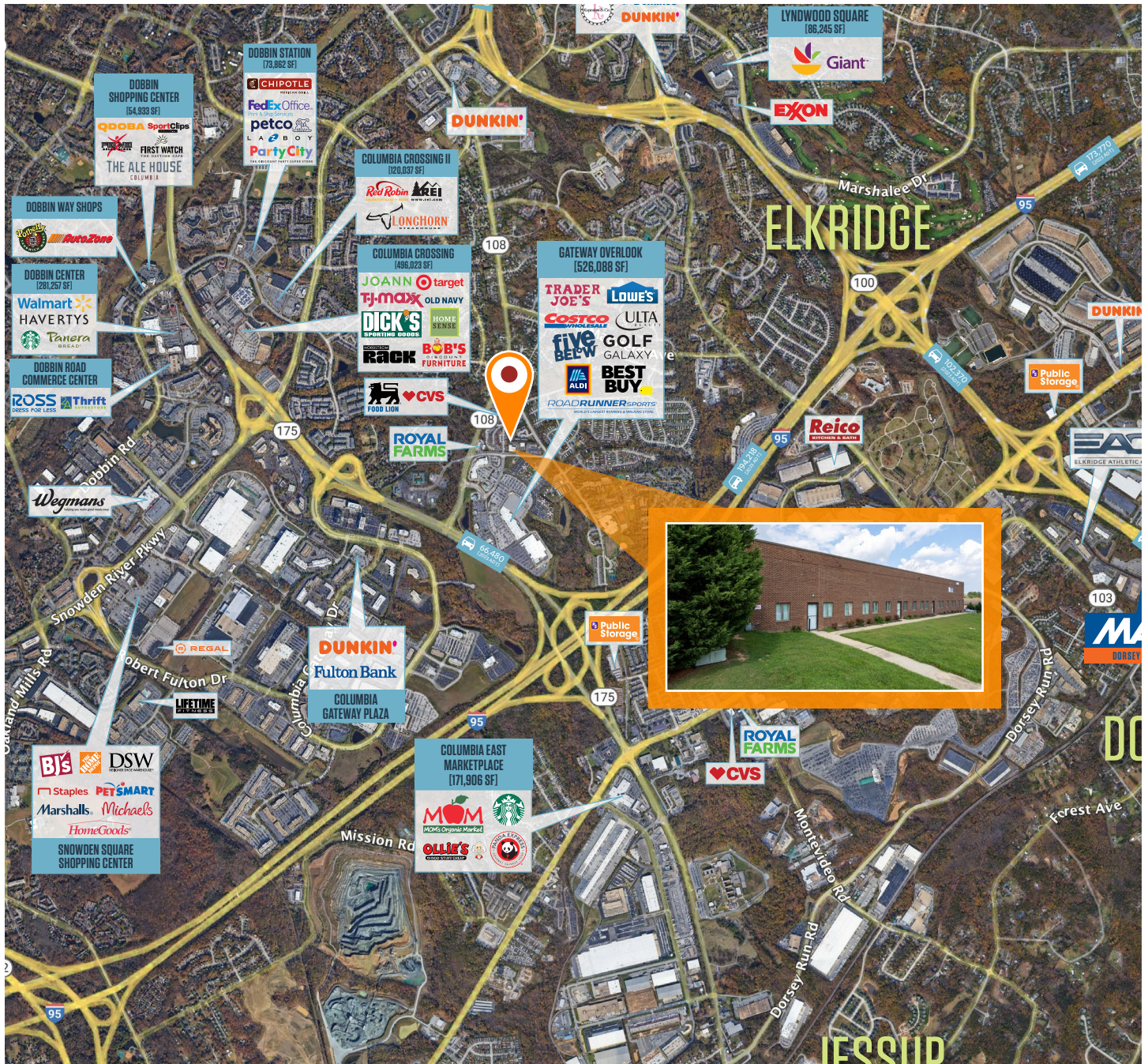


8160 LARK BROWN ROAD

Elkridge, MD 2105 | Howard County



MARKET AERIAL



While we have no reason to doubt the accuracy of any of the information supplied, we cannot, and do not, guarantee its accuracy. All information should be independently verified prior to a purchase or lease of the property. We are not responsible for errors, omissions, misuse, or misinterpretation of information contained herein and make no warranty of any kind, express or implied, with respect to the property or any other matters.

Abby Glassberg
aglassberg@klnb.com
443-574-1433

Aaron Carroll
acarroll@klnb.com
202-652-2333

9881 Broken Land Pkwy, #300
Columbia, MD 21046
klnb.com