

# OFFERING MEMORANDUM

276 E Highland Ave, San Bernadino CA 92404

*Car Wash & Commercial Vacant Land in San Bernadino*

**Sang Lee**

**909.569.8898**

sanglee601@hotmail.com

DRE# : 01013432



**RE/MAX**

The information contained herein is obtained from sources believed to be reliable. However, we have not verified it and make no guarantees, warranties or representations as to the completeness or accuracy thereof. The presentation of this property is used for example and is submitted subject to errors, omissions, change of price or conditions, and is subject to prior sale, lease or withdrawal without notice.



# PROPERTY DETAILS :

## Car Wash & Commercial Vacant Land in San Bernadino



276 E Highland Ave, 23<sup>rd</sup> St

Building Size	6,462 SF
Lot Size	84,164 SF
Year Built	1964 (Building)
Use Code	Car Wash, Commercial Vacant Land
APN / Parcel ID	0150-281-11-0000 0150-281-12-0000 0150-281-13-0000 0150-281-15-0000 0150-281-01-0000

**ASKING PRICE**  
**\$3,500,000 Building**  
**+ Car Wash Business**  
**+ Commercial Vacant Land**



# HIGHLIGHTS

---

Prime area of city of San Bernardino

Easy convert to express car wash

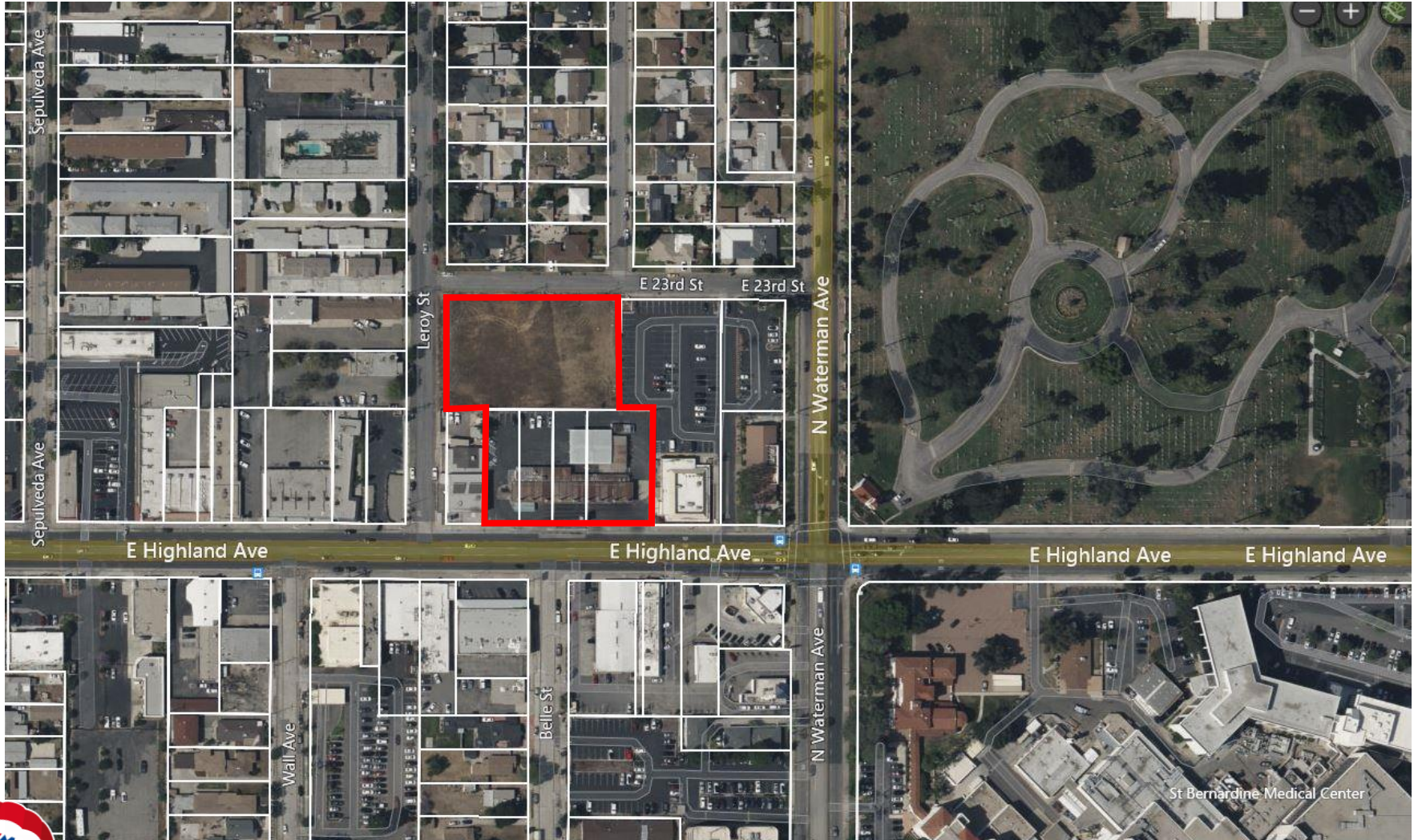
Prime location and good opportunity for investor

Close to all commercial and government building

Lots of traffic area & See it to believe It

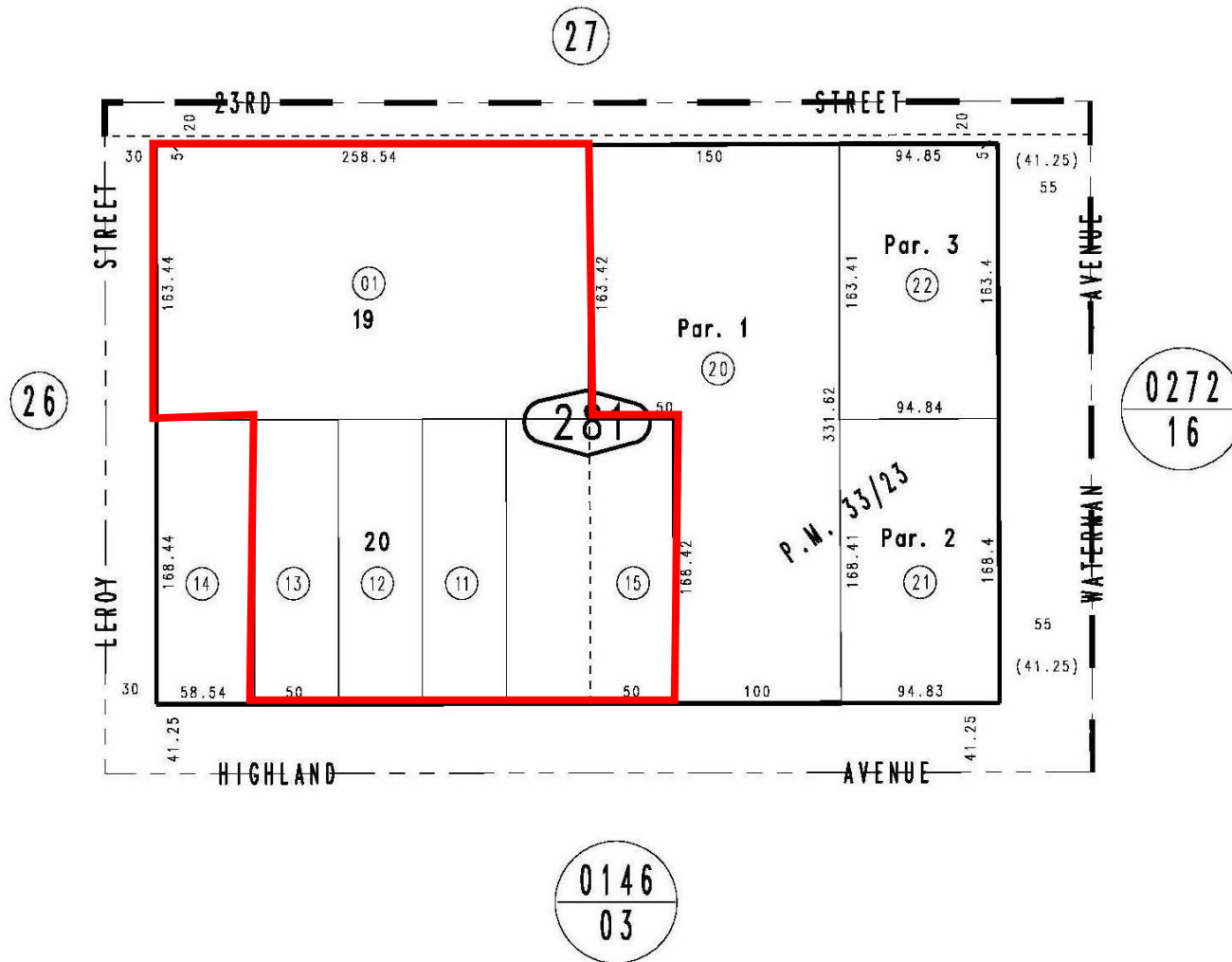


# AERIAL MAP





# PARCEL MAP

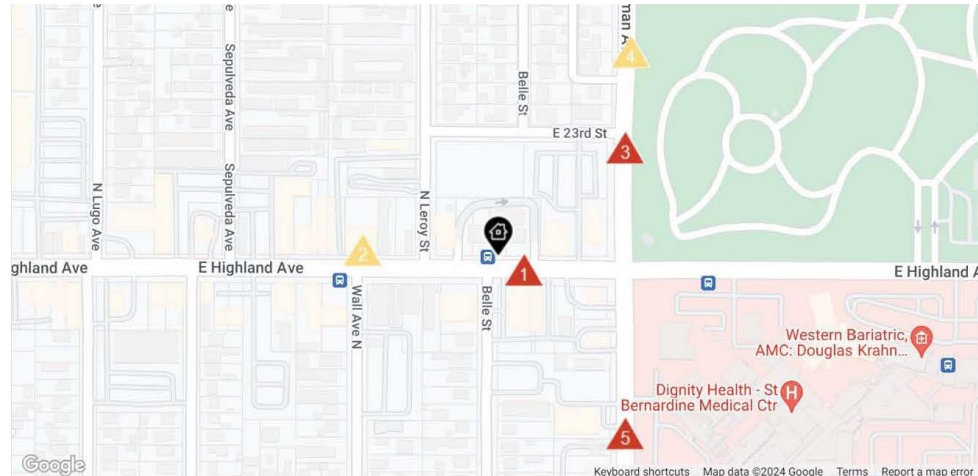


# DEMOGRAPHIC PROFILE

Population	Zip 92404	National
2000	54,823	281,421,906
2008	59,685	309,731,508
2013	61,542	324,062,684
Growth Rate	0.9 %	1 %
Growth Centile	58 %	0 %
Households	Zip 92404	National
2000	17,683	105,480,101
2008	18,337	116,523,156
2013	18,765	122,109,448
Household Growth Rate	0.4 %	1.1 %
Average Household Size	3.17	2.59
Families	Zip 92404	National
2000	12,648	71,787,347
2008	13,044	77,956,117
Family Growth Rate	0.3 %	0.9 %
Age Distribution	Zip 92404	National
0 - 4	9.9 %	6.8 %
5 - 9	8.9 %	6.7 %
10 - 14	8.2 %	6.6 %
15 - 19	9.2 %	7.1 %
20 - 24	8.1 %	6.9 %
25 - 44	25.5 %	27 %
45 - 64	19.9 %	26 %
65 - 84	8.5 %	10.9 %
85+	1.7 %	1.9 %
Median Age	Zip 92404	National
2008	28.7	36.9
Male/Female Ratio	48.7%/51.3%	49.2%/50.8%
Household Income	Zip 92404	National
% <\$25K	33 %	20.9 %
% \$25K - 50K	29.3 %	24.4 %
% \$50K - 100K	29.8 %	35.3 %
% \$100K - 150K	5.8 %	11.7 %
% >\$150K	2.1 %	7.6 %
Median Household Income	Zip 92404	National
2008	\$ 37,751	\$ 54,719
2013	\$ 40,150	\$ 56,938
Per Capita Income	\$ 15,406	\$ 27,277
Household Income Centile	Zip 92404	National
National	26 %	
State	18 %	



# TRAFFIC COUNTS



Daily Traffic Counts: Up 6,000 / day 6,001 – 15,000 15,001 – 30,000 30,001 – 50,000 50,001 – 100,000 Over 100,000 / day

1

26,981

2023 Est. daily traffic counts

Street: E Highland Ave

Cross: N Belle St

Cross Dir: W

Dist: 0.02 miles

Historical counts

Year	Count	Type
2003	<div><div></div><div></div></div> 26,944	ADT
1999	<div><div></div><div></div></div> 21,852	ADT

2

301

2023 Est. daily traffic counts

Street: Highland Avenue

Cross: N Wall Ave

Cross Dir: SW

Dist: 0.01 miles

Historical counts

Year	Count	Type
2019	<div><div></div><div></div></div> 301	ADT

3

19,125

2023 Est. daily traffic counts

Street: N Waterman Ave

Cross: E 23rd St

Cross Dir: N

Dist: 0.01 miles

Historical counts

Year	Count	Type
2004	<div><div></div><div></div></div> 19,100	ADT
1997	<div><div></div><div></div></div> 17,277	ADT

4

2,350

2023 Est. daily traffic counts

Street: Waterman Avenue

Cross: E 23rd St

Cross Dir: S

Dist: 0.05 miles

Historical counts

Year	Count	Type
2019	<div><div></div><div></div></div> 2,347	ADT

5

22,964

2023 Est. daily traffic counts

Street: N Waterman Ave

Cross: E 21st St

Cross Dir: S

Dist: 0.04 miles

Historical counts

Year	Count	Type
2003	<div><div></div><div></div></div> 22,933	ADT
1999	<div><div></div><div></div></div> 22,832	ADT
1997	<div><div></div><div></div></div> 19,800	ADT
1992	<div><div></div><div></div></div> 25,910	ADT

NOTE: Daily Traffic Counts are a mixture of actual and Estimates (\*)





# PHOTOS





## CONFIDENTIALITY AND DISCLAIMER

The information being provided by CARETS is for the visitor's personal, non-commercial use and may not be used for any purpose other than to identify prospective properties visitor may be interested in purchasing. Any information relating to a property referenced on this web site comes from the Internet Data Exchange (IDX) program of the CARETS MLS. This web site may reference real estate listing(s) held by a brokerage firm other than the broker and/or agent who owns this web site. Any information relating to a property, regardless of source, including but not limited to square footages and lot sizes, is deemed reliable but not guaranteed and should be personally verified through personal inspection by and/or with the appropriate professionals. The data contained herein is copyrighted by CARETS® and is protected by all applicable copyright laws. Any dissemination of this information is in violation of copyright laws and is strictly prohibited.

