

Medical Office | For Sublease

CBRE

# Northside Medical Midtown

1110 W Peachtree St NW  
Suite 1020  
Atlanta, GA 30215



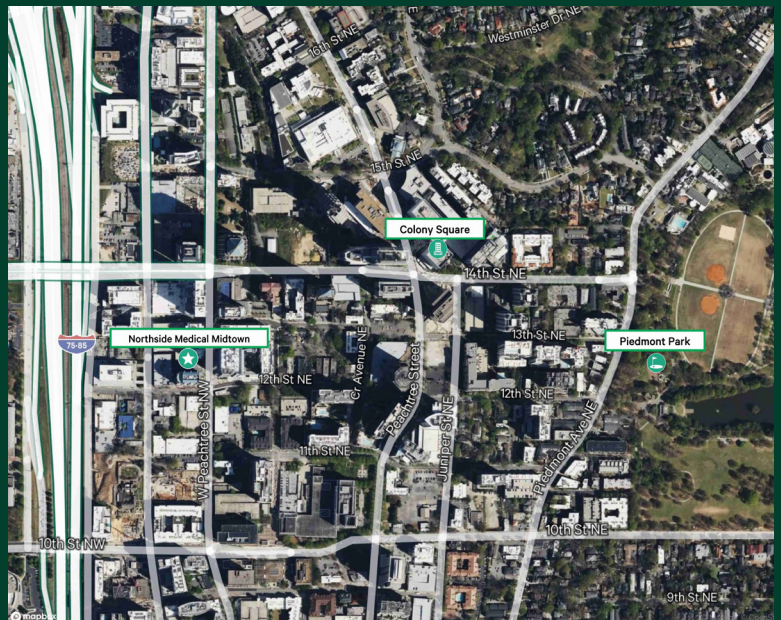
# Property Details

Northside Medical Midtown is a premier Class A medical office development located in the vibrant heart of Midtown Atlanta. This prime real estate opportunity is ideal for physicians seeking to expand their practices and tap into a growing patient base, benefiting from established referral patterns within the building. Our facility offers ample parking, ensuring convenient access for patients from the parking garage to their healthcare providers. Additionally, you will experience unparalleled access to Class A amenities, including the newly revitalized Colony Square, home to popular retailers like Rumi's Kitchen, 5Church, Starbucks, Sweetgreen, and Chick-Fil-A. Available for sublease, our space features 5 exam rooms, 1 lab, 2 Restrooms, 1 office, a break room, and a spacious storage area. Join a thriving medical community at Northside Medical Midtown, where your practice can flourish in a dynamic environment.



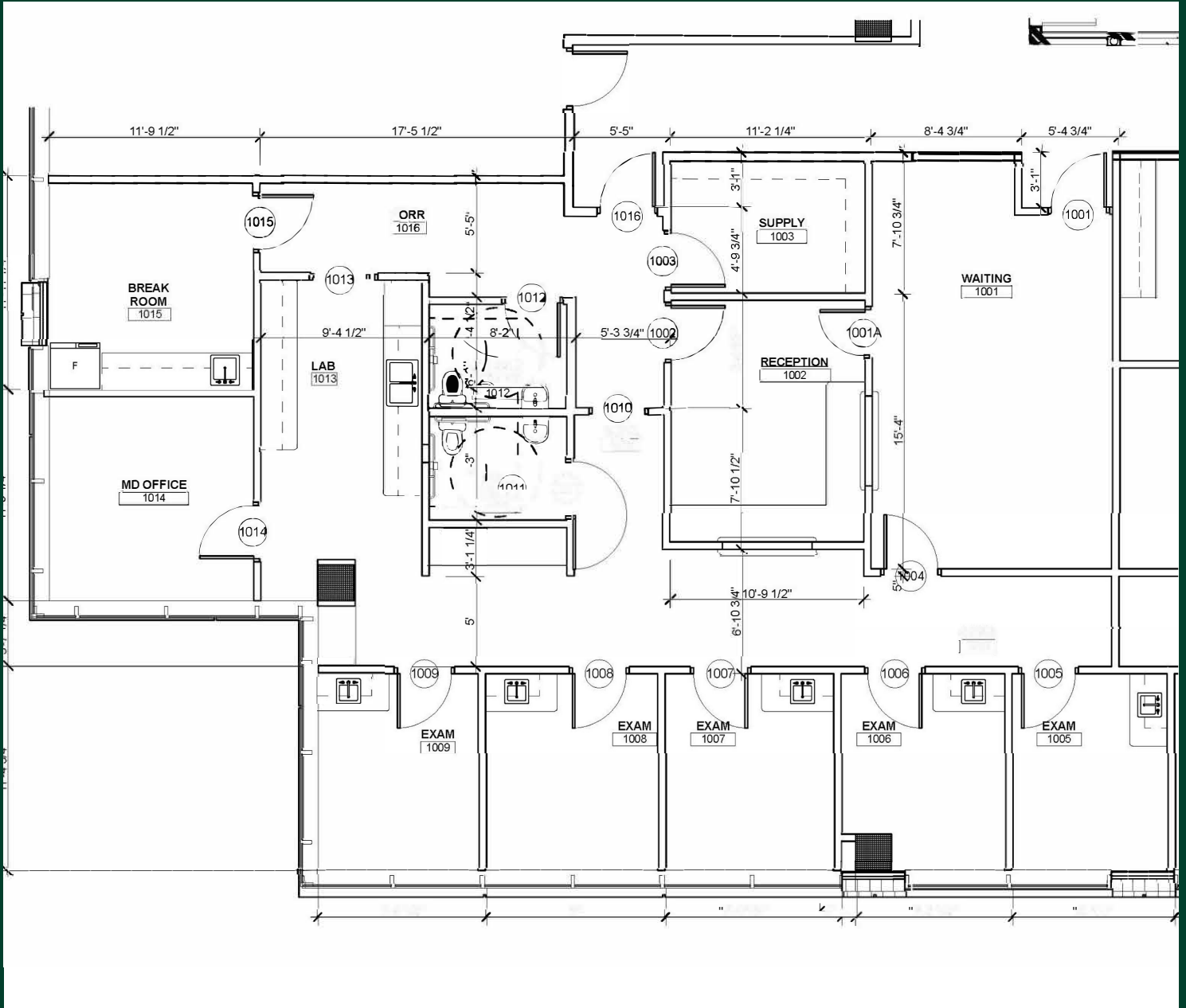
## Property Highlights

- + Home to major health system
- + Excellent tenant synergies
- + Opportunity to capture Midtown Atlanta patient base
- + Class A - 2nd generation clinical space



# Available Space

Northside Medical Midtown- 2,584 RSF



For Sublease



## Contact Us

### Adam Butler

Senior Vice President  
+1 404 434 9699  
adam.butler@cbre.com

### Garrett Benefiel

Vice President  
+1 251 680 8989  
garrett.benefiel@cbre.com

### CBRE, Inc.

3550 Lenox Rd, Suite 2300  
Atlanta, GA 30326  
+1 404 923 1330

© 2024 CBRE, Inc. All rights reserved. This information has been obtained from sources believed reliable, but has not been verified for accuracy or completeness. You should conduct a careful, independent investigation of the property and verify all information. Any reliance on this information is solely at your own risk. CBRE and the CBRE logo are service marks of CBRE, Inc. All other marks displayed on this document are the property of their respective owners, and the use of such logos does not imply any affiliation with or endorsement of CBRE. Photos herein are the property of their respective owners. Use of these images without the express written consent of the owner is prohibited.

**CBRE**