



**FIRST CAPITAL**  
Property Group  
*Commercial Real Estate Services*



# RETAIL SUITES FOR LEASE

2300 - 2304 Edgewater Drive, Orlando, FL 32804

Contact: Dominique Greco  
Sales & Leasing Associate

E: [Dominique@FCPG.com](mailto:Dominique@FCPG.com)  
P: 407.872.0177 ext.142

Contact: Ben Kuykendall  
Vice President of Brokerage Services

E: [Ben@FCPG.com](mailto:Ben@FCPG.com)  
P: 407.872.0177 ext.131

Contact: Dan Van Nada, CCIM  
Vice President of Brokerage Services

E: [Dan@FCPG.com](mailto:Dan@FCPG.com)  
P: 407.872.0177 ext.117

**For Lease: \$35.00 / SF, NNN**

Unit 2300: ± 1,328 SF

Unit 2304: ± 1,650 SF | 2nd Gen Restaurant

Prime retail at College Park's "Main & Main" with excellent visibility and strong signage exposure on Edgewater Dr (12,500 AADT)

Surrounded by a diverse lineup of thriving local businesses and nationally recognized brands




Situated in one of Orlando's most desirable, walkable neighborhoods, surrounded by affluent residential communities

Located in an Orlando Main Street district, benefiting from city-supported marketing, events, and consistent pedestrian activity

Within a STRIVE Orlando Tier 2 Opportunity Zone, offering potential economic incentives

Less than one mile from both I-4 and Orange Blossom Trail

## DEMOGRAPHICS

	2025	 Total Population	 Total Households	 Average HH Income
1 Mile		12,607	5,719	\$170,408
3 Miles		96,415	46,020	\$126,958
5 Miles		286,001	120,114	\$116,454

615 East Colonial Drive, Orlando, FL 32803 Phone: 407.872.0209 [www.FCPG.com](http://www.FCPG.com)

Information furnished regarding the subject property is believed to be accurate, but no guarantee or representation is made. References to square footage are approximate. This offering is subject to errors, omissions, prior sale or lease or withdrawal without notice. ©2026 First Capital Property Group, Licensed Real Estate Brokers & Managers.



# NEIGHBORHOOD

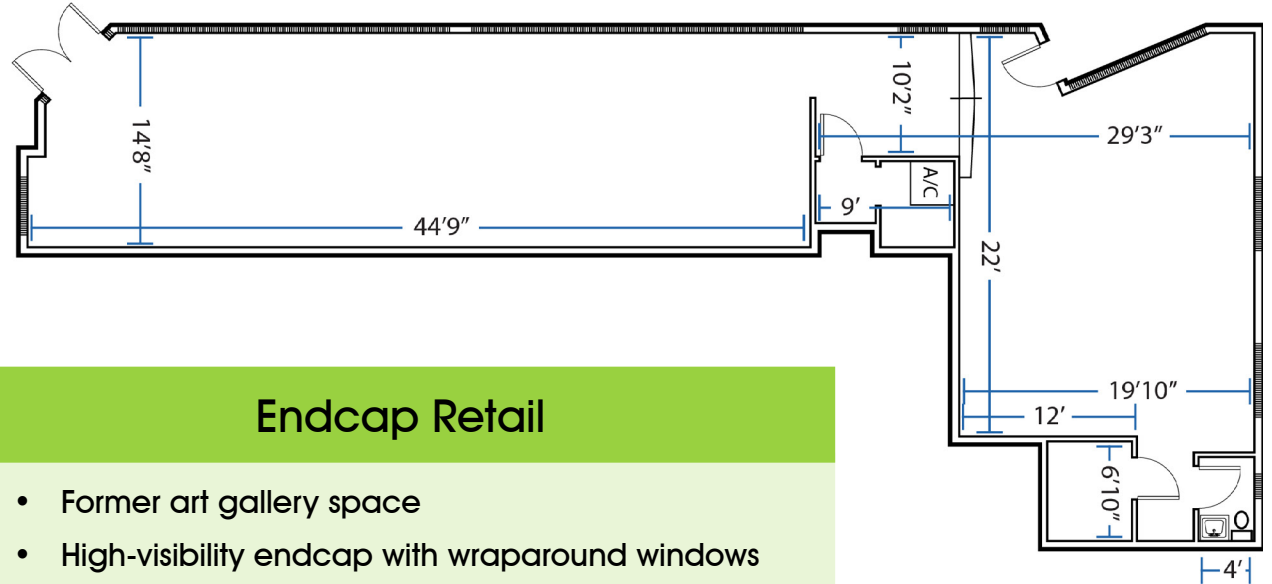
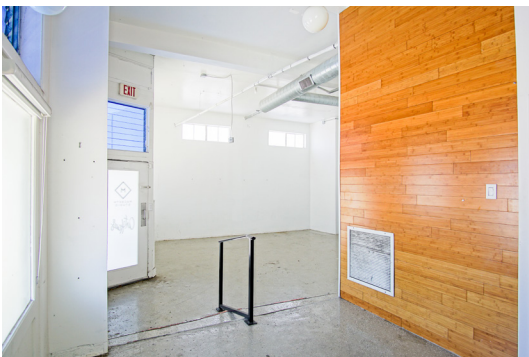


615 East Colonial Drive, Orlando, FL 32803 Phone: 407.872.0209 www.FCPG.com

Information furnished regarding the subject property is believed to be accurate, but no guarantee or representation is made. References to square footage are approximate. This offering is subject to errors, omissions, prior sale or lease or withdrawal without notice. ©2026 First Capital Property Group, Licensed Real Estate Brokers & Managers.



Unit 2300: ± 1,328 SF



## Endcap Retail

- Former art gallery space
- High-visibility endcap with wraparound windows on Edgewater Drive and Smith Street
- Commanding visibility at a signalized intersection

**TAKE A VIRTUAL TOUR VIA MATTERPORT**

Visit: <https://fcpbg.com/2300-edgewater>

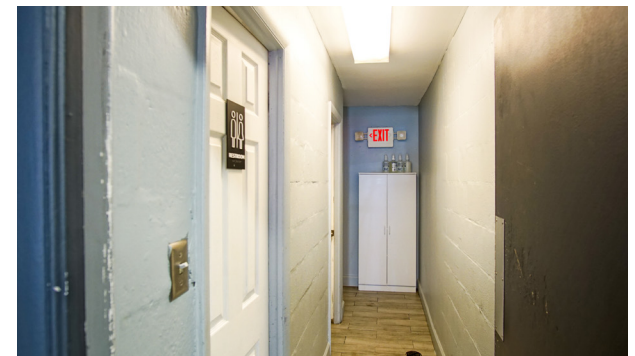
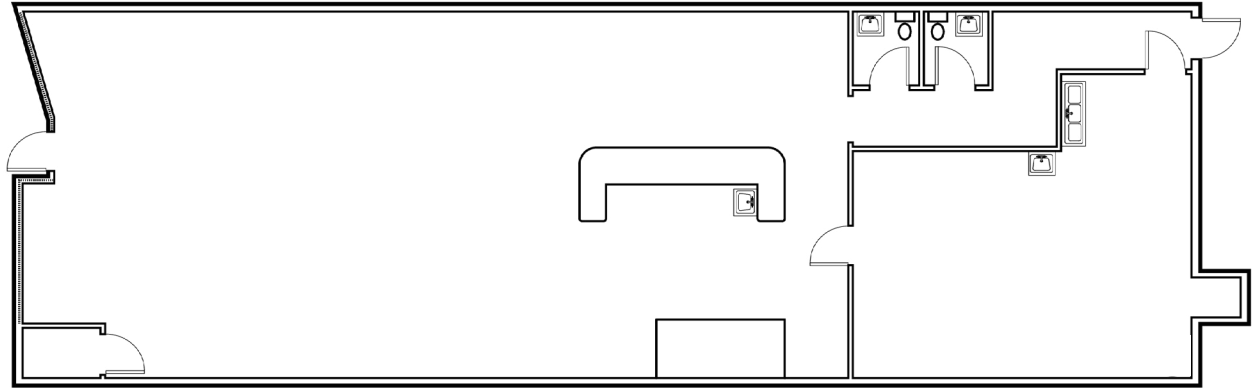
■ 615 East Colonial Drive, Orlando, FL 32803 ■ Phone: 407.872.0209 ■ [www.FCPG.com](http://www.FCPG.com) ■

Information furnished regarding the subject property is believed to be accurate, but no guarantee or representation is made. References to square footage are approximate. This offering is subject to errors, omissions, prior sale or lease or withdrawal without notice. ©2026 First Capital Property Group, Licensed Real Estate Brokers & Managers.

Unit 2304: ± 1,650 SF

## 2nd Generation Restaurant

- Former College Park Café
- Restaurant-ready: ideal for fast-casual or full-service concepts



■ 615 East Colonial Drive, Orlando, FL 32803 ■ Phone: 407.872.0209 ■ [www.FCPG.com](http://www.FCPG.com) ■

Information furnished regarding the subject property is believed to be accurate, but no guarantee or representation is made. References to square footage are approximate. This offering is subject to errors, omissions, prior sale or lease or withdrawal without notice. ©2026 First Capital Property Group, Licensed Real Estate Brokers & Managers.