



VIDEO

Property Description

New office suites are available in the 2nd floor of the Midtown Plaza Court Building. Suites feature an updated lobby with elevator, parking, and modern finishes. Floor plans include a combination of open space and private offices.

Property Highlights

- Midtown amenities - this location is in the center of Midtown's restaurants and services
- Move-in ready suites
- New, modern finishes
- Iconic location with easy highway access
- Easy parking

Offering Summary

Address:	1100 Classen Drive, OKC, OK 73103
Pricing:	\$24 NNN
Parking:	Parking Deck & Surface Parking
Number of Units:	6
Available SF:	947 - 8,112 SF

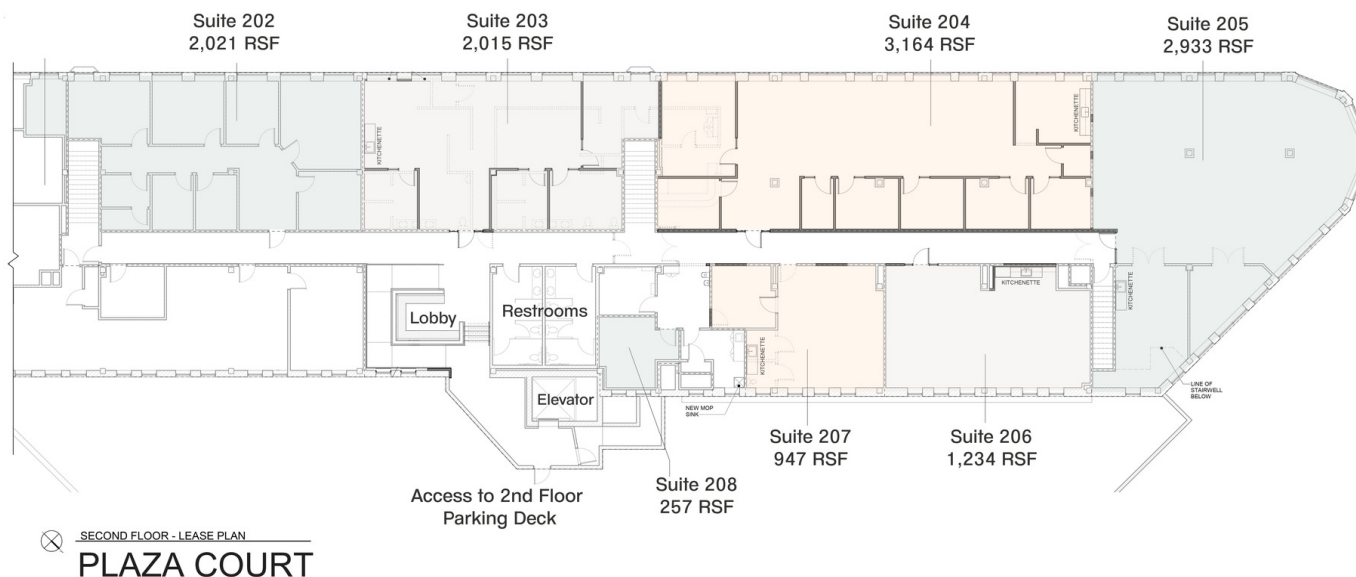
Barta Bailey

PLAZA COURT OFFICE INTERIOR PHOTOS



Barta Bailey

PLAZA COURT OFFICE FLOOR PLAN



Available Spaces

Suite	Size (SF)	Lease Type	Lease Rate	Description
Suite 202	2,021 SF	NNN	\$24.00 SF/yr	6 private offices & conference room
Suite 203	2,015 SF	NNN	\$24.00 SF/yr	3 private offices, conference room & kitchenette
Suite 205	2,933 - 8,112 SF	NNN	\$24.00 SF/yr	Open floor plan with a conference room & break room, panoramic view
Suite 206	1,234 SF	NNN	\$24.00 SF/yr	Open floor plan with kitchenette
Suite 207	947 - 2,181 SF	NNN	\$24.00 SF/yr	Open floor plan with kitchenette & conference room

Barta Bailey

PLAZA COURT OFFICE LOCATION

