

**R1** Steakhouse  
RICHMOND, TEXAS



INSITE ARCHITECTURE

JUNE 20, 2025

VIEW FROM NORTH EAST

A development by:

**R1 AMERICA**



# R1 Steakhouse

RICHMOND, TEXAS



VIEW FROM NORTH WEST

A development by:

R1 AMERICA

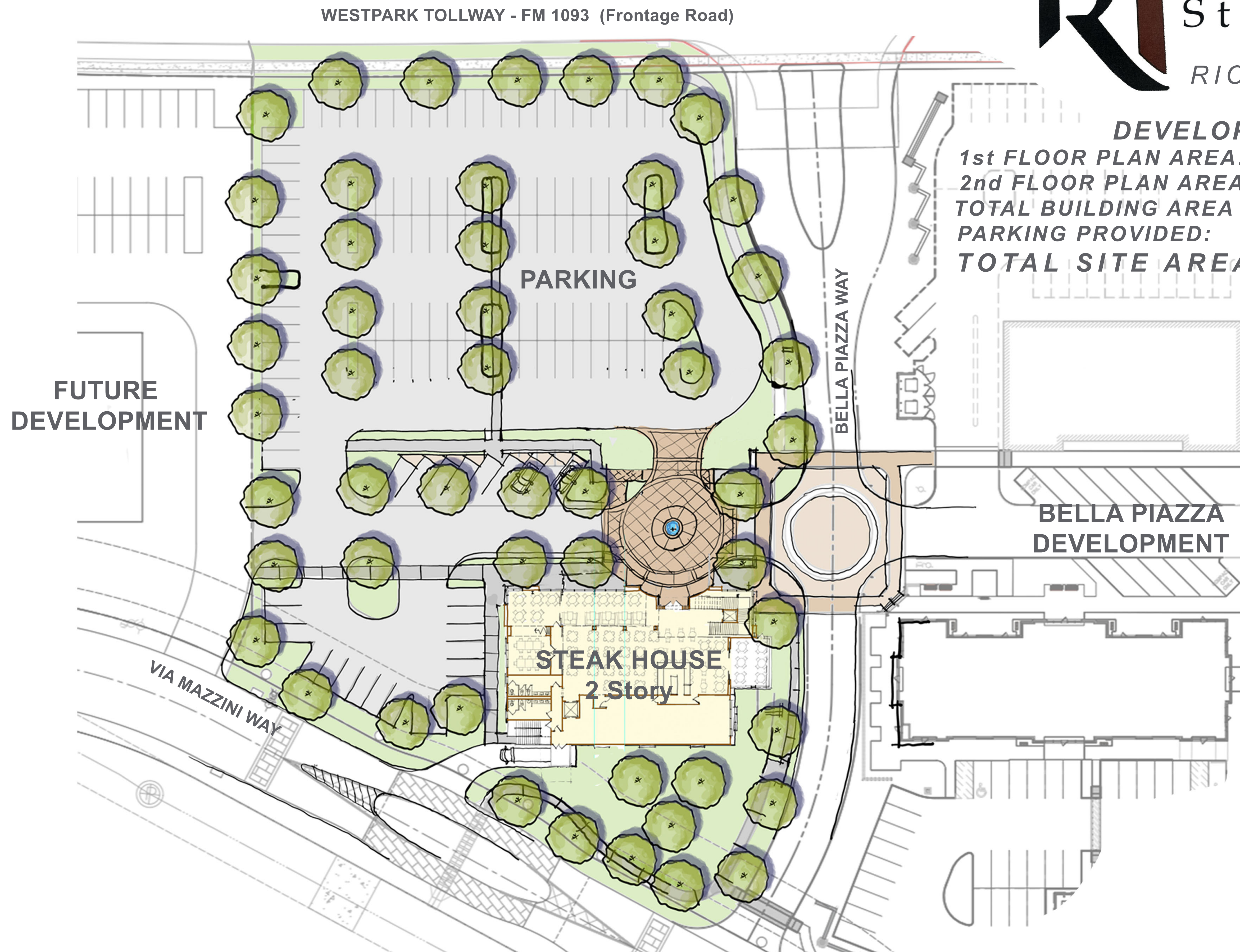
INSITE ARCHITECTURE

JUNE 20, 2025



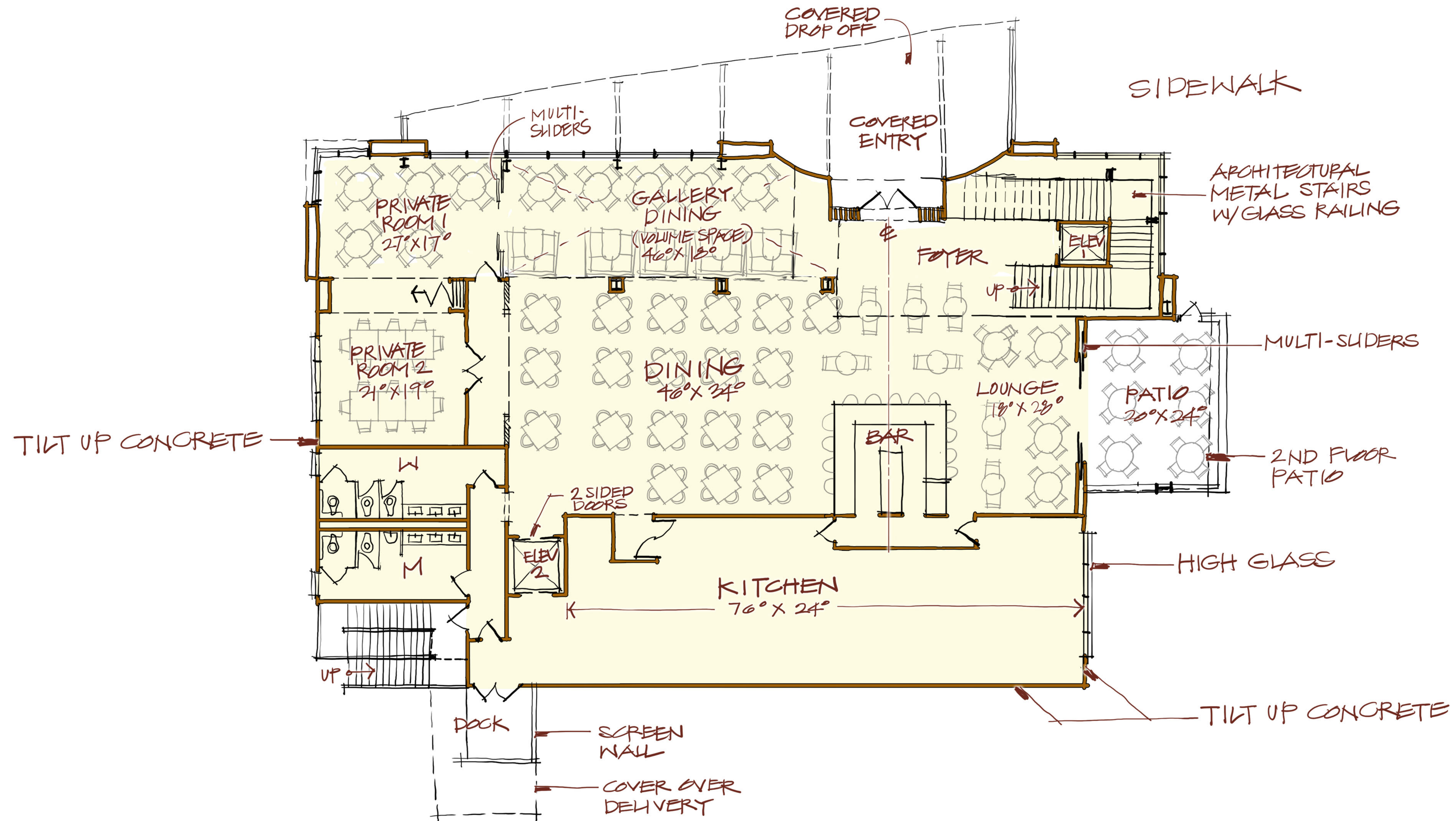
# R1 Steakhouse

RICHMOND, TEXAS



DEVELOPMENT SUMMARY:	
1st FLOOR PLAN AREA:	+/- 8,494 sqft
2nd FLOOR PLAN AREA:	+/- 6,320 sqft
TOTAL BUILDING AREA (GLA);	+/- 14,814 sqft
PARKING PROVIDED:	140 Spaces
TOTAL SITE AREA:	2.5499 Ac



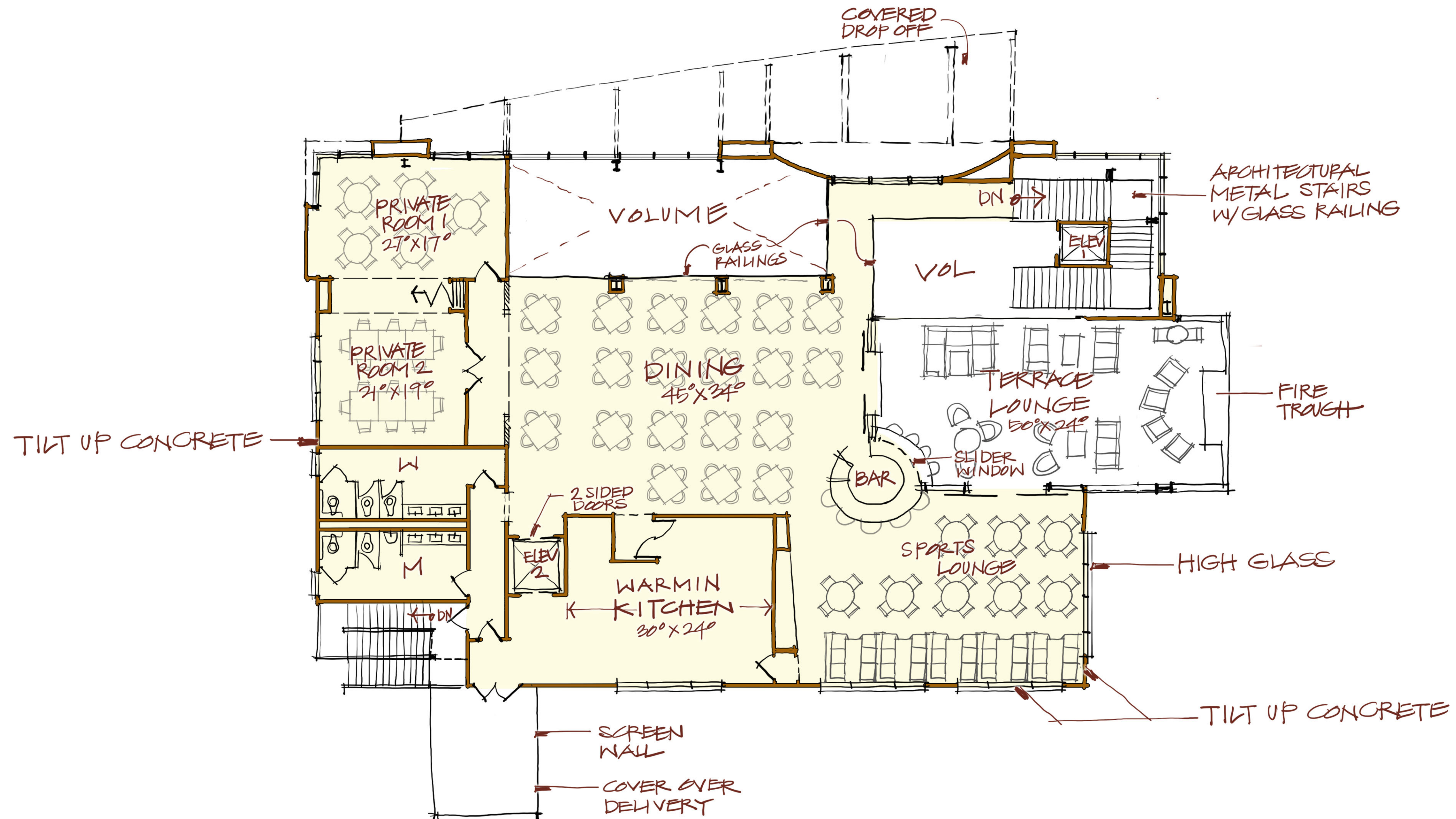


1st LEVEL FLOOR PLAN

A development by:

R1 AMERICA





2nd LEVEL FLOOR PLAN

A development by:

**R1 AMERICA**