



**FOR SALE**

**DWN  
TWN**  
REALTY ADVISORS  
25.77°N -80.19°W

**Central Miami Commissary Kitchen**

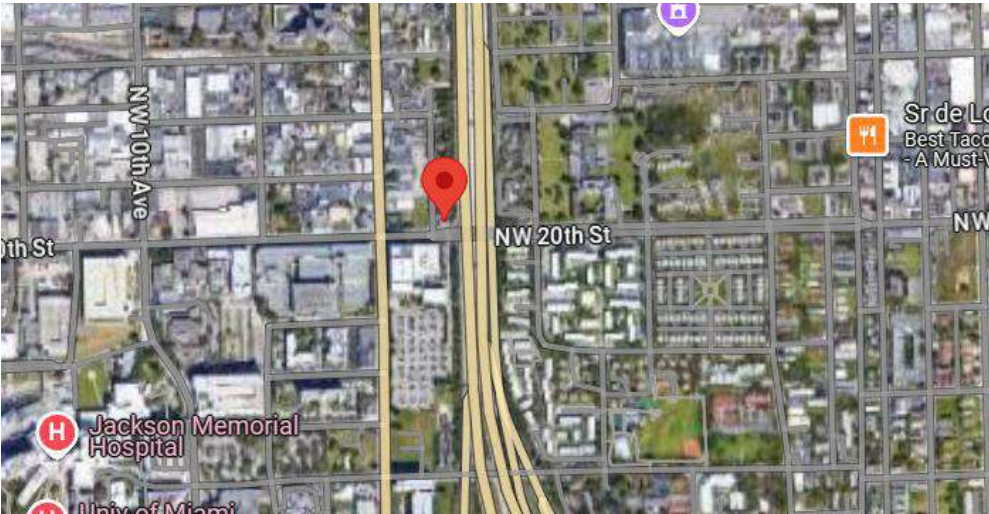
643 NW 20th St, Miami, FL 33127



# Central Miami Commissary Kitchen

643 NW 20th St, Miami, FL 33127

## EXECUTIVE SUMMARY



### OFFERING SUMMARY

Sale Price:	\$3,950,000
Submarket:	Allapattah
Building SF:	1,560 SF
Lot SF:	6,225 SF
Price/SF Lot:	\$634.54
Pro-Forma Gross:	\$360,000
Pro-Forma Expenses:	\$90,000
Pro-Forma NOI:	\$270,000
Pro-Forma Cap Rate:	7.7%

### INVESTMENT OVERVIEW

DWNTWN Realty Advisors has been retained exclusively by ownership to arrange the sale of 643 NW 20th St, Miami, FL 33127. This turnkey commissary kitchen offers a fully equipped and entitled 1,560 SF freestanding building on a 6,225 SF lot, providing a seamless transition for restaurant operators or investors. Strategically located along I-95, the property boasts exceptional visibility and exposure, drawing traffic from Wynwood, the Health District, and Downtown Miami.

Permitted for restaurant use with outdoor seating, the property's prime corner location and proximity to major institutions enhance its appeal. With ample parking and a position in the rapidly evolving Allapattah submarket, 643 NW 20th St represents a rare opportunity for investors seeking a high-demand asset in one of Miami's most dynamic neighborhoods.

### INVESTMENT HIGHLIGHTS

- Turnkey Commissary Kitchen
- Fully equipped and entitled
- 1,560 SF Freestanding Building On 6,225 SF Lot
- Restaurant permitted with outdoor seating

**Tony Arellano P.A.** // Managing Partner  
[ta@dwntwnrealtyadvisors.com](mailto:ta@dwntwnrealtyadvisors.com) // (P) 786.235.8330

**Devlin Marinoff** // Managing Partner & Broker  
[dm@dwntwnrealtyadvisors.com](mailto:dm@dwntwnrealtyadvisors.com) // (P) 305.909.7343

**DWNTWN REALTY ADVISORS**  
A Commercial Brokerage Firm

# Central Miami Commissary Kitchen

643 NW 20th St, Miami, FL 33127

## TRADE AREA OVERVIEW



### LOCATION OVERVIEW

The Urban Core of Miami has transformed into one of the city's most vibrant and sought-after areas, known for its diverse neighborhoods, thriving arts scene, and significant commercial growth. This area, encompassing Wynwood, the Design District, Brickell, Edgewater, and Allapattah, has experienced a surge of new developments, attracting both residents and businesses seeking a dynamic urban lifestyle. With its blend of trendy retail spaces, upscale dining, and residential projects, the Urban Core has become a focal point for Miami's continued evolution.

643 NW 20th St is strategically positioned to capitalize on this growth, situated just minutes from Wynwood's bustling art galleries and trendy restaurants, as well as the Health District's world-class medical facilities. The property's proximity to major thoroughfares, including I-95, ensures seamless connectivity to key neighborhoods, making it an ideal location for a restaurant or retail operation aiming to attract a diverse and affluent customer base. The surrounding Allapattah neighborhood, known for its emerging arts and cultural scene, further enhances the property's appeal, presenting a unique opportunity in one of Miami's fastest-growing submarkets.

As the Urban Core continues to expand, 643 NW 20th St stands out for its accessibility and visibility. The location offers a blend of convenience and high traffic exposure, drawing from the residential and professional populations of nearby areas. With major institutions, creative businesses, and affluent residents within a short drive, this property is well-positioned to benefit from the ongoing growth and investment in Miami's Urban Core.

### Drive Times to Key Neighborhoods:

Wynwood: ~5 minutes  
Design District: ~7 minutes  
Allapattah: ~3 minutes  
Edgewater: ~10 minutes  
Brickell: ~12 minutes  
Coral Gables: ~15 minutes  
Health District: ~4 minutes

Tony Arellano P.A. // Managing Partner  
[ta@dwntwnrealtadvisors.com](mailto:ta@dwntwnrealtadvisors.com) // (P) 786.235.8330

Devlin Marinoff // Managing Partner & Broker  
[dm@dwntwnrealtadvisors.com](mailto:dm@dwntwnrealtadvisors.com) // (P) 305.909.7343

DWNTWN REALTY ADVISORS  
A Commercial Brokerage Firm



# Central Miami Commissary Kitchen

643 NW 20th St, Miami, FL 33127

## AERIALS

DWNTWN  
REALTY ADVISORS  
25.77°N -80.19°W



Tony Arellano P.A. // Managing Partner  
[ta@dwntwnrealtyadvisors.com](mailto:ta@dwntwnrealtyadvisors.com) // (P) 786.235.8330

Devlin Marinoff // Managing Partner & Broker  
[dm@dwntwnrealtyadvisors.com](mailto:dm@dwntwnrealtyadvisors.com) // (P) 305.909.7343

DWNTWN REALTY ADVISORS  
A Commercial Brokerage Firm

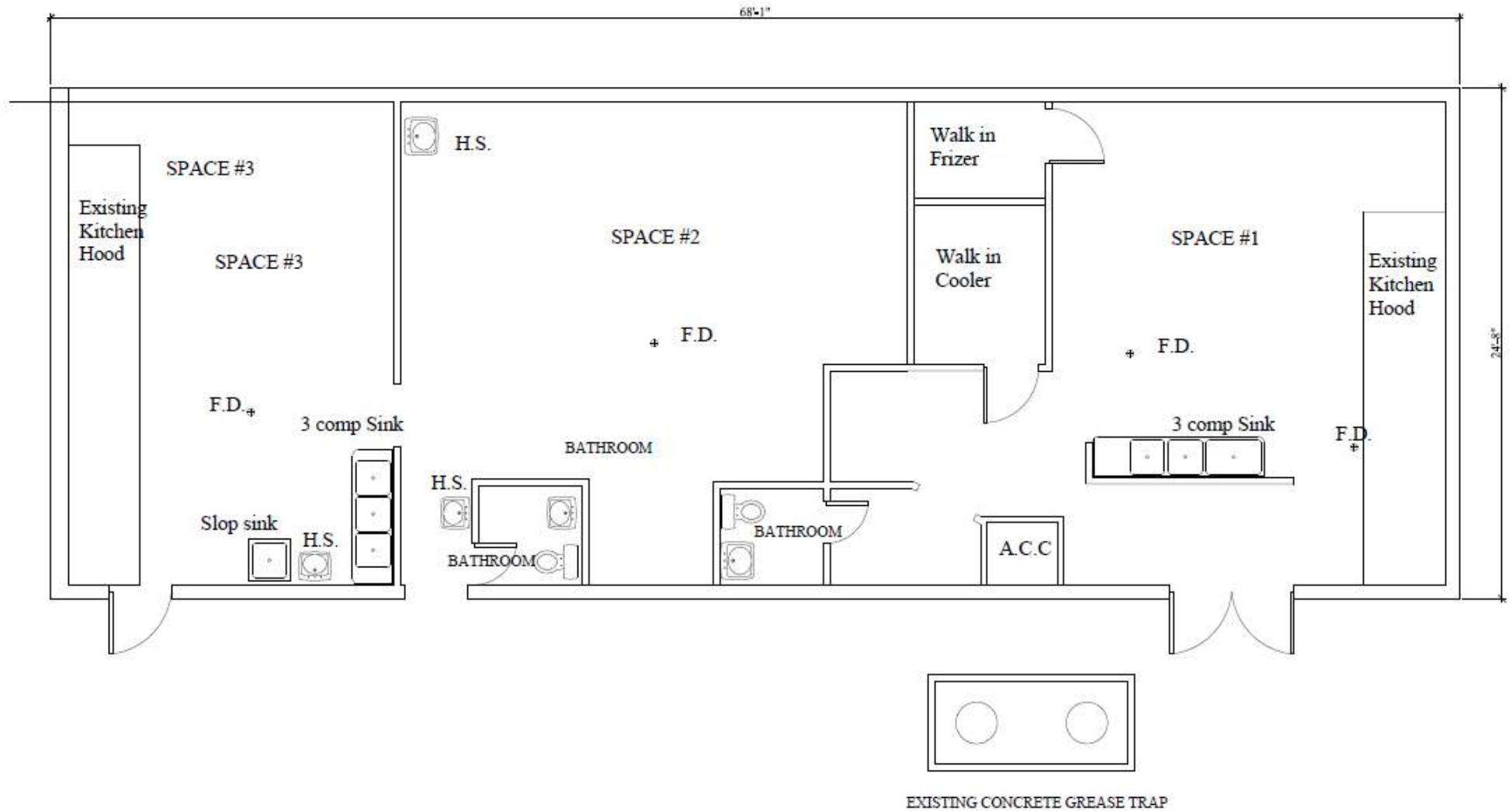
© DWNTWN Realty Advisors, LLC copyright 2024. No warranty or representation, express or implied, is made to the accuracy or completeness of the information contained herein, and same is submitted subject to errors, omissions, change of price, rental or other conditions, withdrawal without notice, and to any special listing conditions imposed by the property owner(s). It is the responsibility of the prospective purchaser to make an independent determination as to the condition of the property (or properties) in question and cannot rely upon any representation made by DWNTWN Realty Advisors, LLC or any broker associated with DWNTWN Realty Advisors, LLC.

[View Inventory](#)

# Central Miami Commissary Kitchen

643 NW 20th St, Miami, FL 33127

## FLOORPLAN



**Tony Arellano P.A.** // Managing Partner  
[ta@dwntwnrealtyadvisors.com](mailto:ta@dwntwnrealtyadvisors.com) // (P) 786.235.8330

**Devlin Marinoff** // Managing Partner & Broker  
[dm@dwntwnrealtyadvisors.com](mailto:dm@dwntwnrealtyadvisors.com) // (P) 305.909.7343

**DWNTWN REALTY ADVISORS**  
A Commercial Brokerage Firm



# Central Miami Commissary Kitchen

643 NW 20th St, Miami, FL 33127

## INTERIOR PHOTOS



**Tony Arellano P.A.** // Managing Partner  
[ta@dwntwnrealtyadvisors.com](mailto:ta@dwntwnrealtyadvisors.com) // (P) 786.235.8330

**Devlin Marinoff** // Managing Partner & Broker  
[dm@dwntwnrealtyadvisors.com](mailto:dm@dwntwnrealtyadvisors.com) // (P) 305.909.7343

**DWNTWN REALTY ADVISORS**  
A Commercial Brokerage Firm



# Central Miami Commissary Kitchen

643 NW 20th St, Miami, FL 33127

## OUTSIDE LOT



**Tony Arellano P.A.** // Managing Partner  
[ta@dwntwnrealtyadvisors.com](mailto:ta@dwntwnrealtyadvisors.com) // (P) 786.235.8330

**Devlin Marinoff** // Managing Partner & Broker  
[dm@dwntwnrealtyadvisors.com](mailto:dm@dwntwnrealtyadvisors.com) // (P) 305.909.7343

**DWNTWN REALTY ADVISORS**  
A Commercial Brokerage Firm



# Central Miami Commissary Kitchen

643 NW 20th St, Miami, FL 33127

## NEIGHBORHOOD AERIAL CONTEXT MAP



Tony Arellano P.A. // Managing Partner  
[ta@dwntwnrealtyadvisors.com](mailto:ta@dwntwnrealtyadvisors.com) // (P) 786.235.8330

Devlin Marinoff // Managing Partner & Broker  
[dm@dwntwnrealtyadvisors.com](mailto:dm@dwntwnrealtyadvisors.com) // (P) 305.909.7343

DWNTWN REALTY ADVISORS  
A Commercial Brokerage Firm



# CONTACT

---

## Tony Arellano P.A.

Managing Partner

(C) 786.333.7199

(O) 786.235.8330

[ta@dwntwnrealtyadvisors.com](mailto:ta@dwntwnrealtyadvisors.com)

---

## Devlin Marinoff

Managing Partner & Broker

(C) 917.312.2219

(O) 305.909.7343

[dm@dwntwnrealtyadvisors.com](mailto:dm@dwntwnrealtyadvisors.com)



### DISCLAIMER:

DWNTWN Realty Advisors, LLC. All rights reserved. The information contained herein has been obtained from sources deemed reliable; however, no warranty or representation, express or implied, is made as to its accuracy, completeness, or suitability. All information is subject to errors, omissions, changes in price, rental or other conditions, prior sale, lease, or financing, or withdrawal without notice. Any projections, opinions, or assumptions used are for illustrative purposes only and do not represent current or future performance. DWNTWN Realty Advisors, LLC and its agents expressly disclaim any liability for errors, omissions, or misstatements. It is the sole responsibility of the prospective purchaser, tenant, or other party to conduct their own independent investigation and due diligence concerning the property and not rely on any representations made by DWNTWN Realty Advisors, LLC or its brokers.