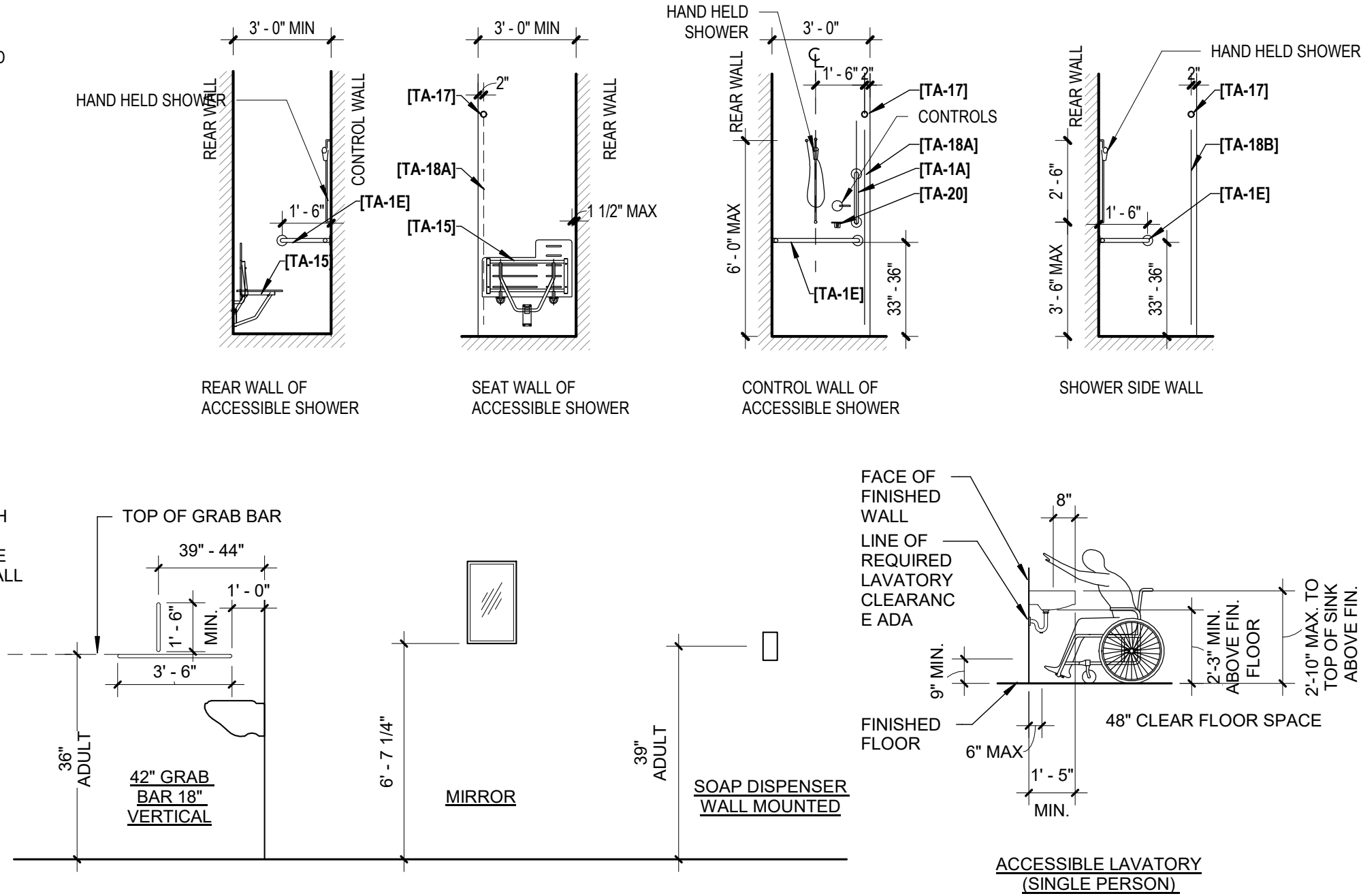
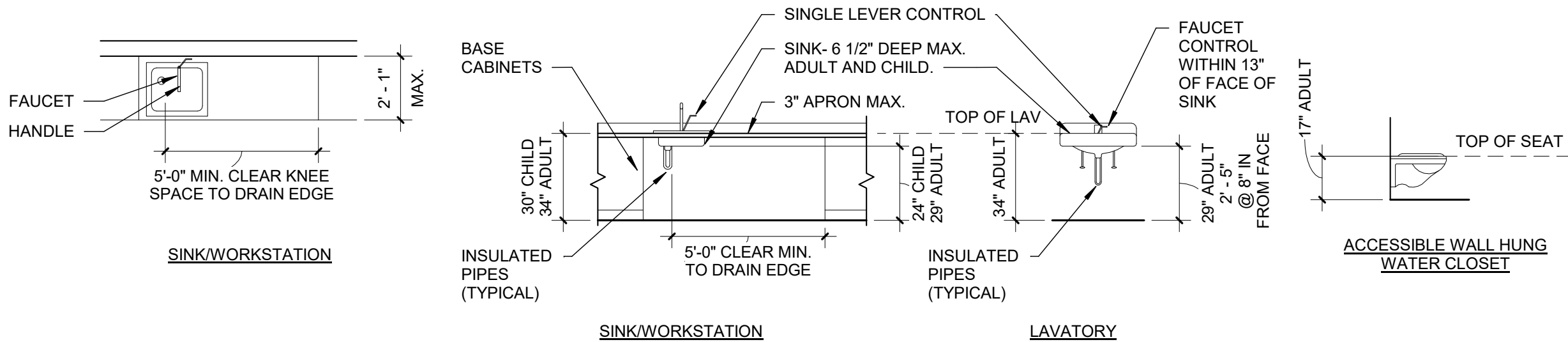


NOTES

1. WASTE AND HOT WATER PIPING TO BE INSULATED AT ACCESSIBLE LAVATORIES AND SINKS
2. ADULT FLUSH CONTROLS FOR WATER CLOSETS AND URINALS SHALL BE MOUNTED ON THE OPEN / WIDE SIDE OF THE WATER CLOSET.
3. ADULT MOUNTING HEIGHT FOR ALL OPERATING PARTS OF MISCELLANEOUS ADULT ACCESSORIES IS 15" AFF MIN. AND 48" AFF MAX. (FIRE ALARMS, SECURITY, THERMOSTATS, ETC.)
4. PROVIDE CONCEALED SOLID BLOCKING IN STUD WALLS FOR ACCESSORY MOUNTING.
5. REFER TO PLANS AND ELEVATIONS FOR REQUIRED ACCESSORIES.
6. ALL "MIN" DIMENSIONS FOR ACCESSORY MOUNTING HEIGHTS ARE TO BE CONSIDERED CLEAR DIMENSIONS TO FINISH SURFACE, UNLESS INDICATED OTHERWISE
- [TA-1E] WALL SHOWER BAR
- [TA-1S] FOLDING SHOWER SEAT
- [TA-17] SHOWER CURTAIN ROD
- [TA-18A] VINYL SHOWER CURTAIN, 42" W
- [TA-18B] VINYL SHOWER CURTAIN, 70" W
- [TA-1A] 18" GRAB BAR
- [TA-20] SOAP DISH



TYPICAL MOUNTING HEIGHTS

BUILDING CODES

STATE BUILDING CODE WITH SUPPLEMENT: 2021 INTERNATIONAL BUILDING CODE
2022 CONNECTICUT AMENDMENT

STATE FIRE CODE WITH SUPPLEMENT: 2021 INTERNATIONAL FIRE CODE
2022 CONNECTICUT AMENDMENT
2022 CT Fire Prevention Code

MECHANICAL, PLUMBING AND ELECTRICAL CODES: 2021 INTERNATIONAL MECHANICAL CODE
2021 INTERNATIONAL PLUMBING CODE
2020 NFPA 70 NATIONAL ELECTRICAL CODE
2021 CT FIRE SAFETY CODE
2021 INTERNATIONAL FIRE CODE
2021 INTERNATIONAL ENERGY CONSERVATION CODE

ACCESSIBILITY CODE: ICC / ANSI A 117.1 - 2009

CURRENT PUBLIC HEALTH CODE TITLE 19. PUBLIC HEALTH & SAFETY

304.1 USE GROUP CLASSIFICATION: PRIMARY - S1 STORAGE MODERATE HAZARD
SECONDARY - BUSINESS

602.2 CONSTRUCTION TYPE: TYPE 2B - UNPROTECTED - NON-SPRINKLERED

NOTE: THESE DRAWINGS REPRESENT THE INTERIOR FIT OUT ONLY, REFER TO PRE ENGINEERED METAL BUILDING DRAWINGS FOR ALL INFORMATION PERTAINING TO CORE AND SHELL OF BUILDING

Minimum Number of Fixtures : TABLE 2902.1 (TOTAL OCCUPANCY = 9 PER TENNANT SPACE)

WATER CLOSETS: 1 per 25 for the first 50 and 1 per 50 for the remainder exceeding 50 PROVIDED : 1 (PER TENNANT)

LAVATORIES: 1 per 40 for the first 80 and 1 per 80 for the remainder exceeding 80 PROVIDED : 1 (PER TENNANT)

DRINKING FOUNTAINS: 1 per 100 PROVIDED : 0 (PER TENNANT)

1 SERVICE SINK: PROVIDED: 1 (PER TENNANT)

TABLE 1006.2.1
SPACES WITH ONE EXIT OR EXIT ACCESS DOORWAY

OCCUPANCY	MAXIMUM OCCUPANT LOAD OF SPACE	MAXIMUM COMMON PATH OF EGRESS TRAVEL DISTANCE (FEET)		
		WITHOUT SPRINKLER SYSTEM (FEET)		WITH SPRINKLER SYSTEM (FEET)
		OCCUPANT LOAD	OL≤30	OL≥30
B	49	100	75	100 ^a

GENERAL NOTES

- A. PROVIDE PAPER TOWEL DISPENSERS & SOAP DISPENSERS AT ALL SINKS. WALL MOUNT ADJACENT TO SINK.
- B. PROVIDE ACCESS PANELS IN GYPSUM CEILINGS AND / OR WALLS TO ALLOW FOR ACCESS TO CONCEALED EQUIPMENT AND DEVICES.
- C. REFER TO CODE COMPLIANCE FLOOR PLANS FOR LOCATIONS OF FIRE RATED PARTITIONS, FIRE SMOKE BARRIERS AND PARTITIONS TO PREVENT THE PASSAGE OF SMOKE.
- D. FIRE RATED PARTITIONS, AND ACOUSTICAL PARTITIONS EXTEND FULL HEIGHT TO THE UNDERSIDE OF GYPSUM BOARD (ATTACHED TO TRUSSES) AND/OR FLOOR DECK ABOVE AS SHOWN ON THE CODE DRAWINGS AND/OR WALL SECTIONS AND/OR PARTITION NOTES/SCHEDULE. SEAL ALL PENETRATIONS AND THE TOP/PERIMETER OF ALL PARTITIONS SPECIFIED TO EXTEND TO THE UNDERSIDE OF GYPSUM BOARD AND/OR DECK TO PREVENT THE PASSAGE OF FIRE, AND/OR SOUND.
- E. OPENINGS AND PENETRATIONS IN FIRE RATED PARTITIONS SEAL WITH UL LABELED FIRESTOPPING MATERIALS.
- F. NOT ALL PARTITION TYPES SHOWN MAY BE USED ON THIS PLAN.
- G. DIMENSIONS INDICATED ARE TO FACE OF CMU OR FACE OF GWB UNLESS OTHERWISE NOTED.
- H. PROVIDE ACOUSTICAL SEALANT AT THE BASE OF ALL INTERIOR WALLS AND AT THE SIDES OF INTERIOR WALLS WHERE THEY INTERSECT WALLS. ALSO PROVIDE ACOUSTICAL SEALANT AT THE TOP OF WALLS WHERE THE WALLS ARE SPECIFIED TO EXTEND TO THE UNDERSIDE OF THE DECK. IN ADDITION, ACOUSTICALLY SEAL ALL OPENINGS IN THESE WALLS WITH BACKER AND ACOUSTICAL SEALANT INCLUDING BUT NOT LIMITED TO OPENINGS AROUND DUCTS, PIPING, CONDUITS, BEAMS, DECKING ETC. FOR A COMPLETE ACOUSTIC WALL ASSEMBLY WHICH MEETS OR EXCEEDS THE STC RATING SHOWN ON THE PARTITION SCHEDULE.

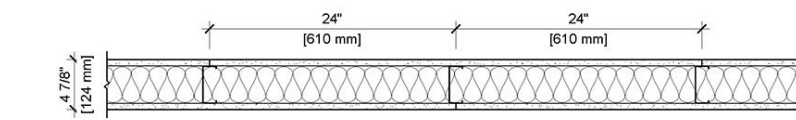
PARTITION LEGEND

- # PARTITION TIGHT TO UNDERSIDE OF METAL DECK AT FLOOR/ROOF OR BOTTOM OF GWB AT TRUSSES/SOFFIT
- # PARTITION TO UNDERSIDE OF FINISHED CEILING

PARTITION SCHEDULE

TYPE	DESCRIPTION	STC	RATING / U.L.#
2A	6" METAL STUDS AT 16" O.C. 5/8" TYPE X GYPSUM BOARD EACH SIDE	-	1HR / U419
2B	6" METAL STUDS AT 16" O.C. 5/8" GYPSUM BOARD EACH SIDE	-	-
		-	-
		-	-

WALL TYPE "2A"



UL U419
Interior Partition - Steel Stud (Non-Load-Bearing)

Fire Rating	System Thickness	STC
1 hours	4.875 in.	48

ASSEMBLY DETAILS

Gypsum Panel: 1 layer 5/8" (15.9 mm) Sheetrock® EcoSmart Gypsum Panel (UL Type ULIX™)

Steel Studs: 1 layer 3-5/8" (92 mm) steel studs, E200 (0.018"), 24" (610 mm) O.C.

Insulation: 1 layer 3-1/2" (89 mm) Fiberglass insulation

Gypsum Panel: 1 layer 5/8" (15.9 mm) Sheetrock® EcoSmart Gypsum Panel (UL Type ULIX™)

- ONE HOUR FIRE RATED PARTITION
- TWO HOUR FIRE RATED PARTITION
- DIRECTION OF TRAVEL WITH ACCUMULATED OCCUPANT LOAD
- PROPOSED INTERIOR LOT LINE

GRAY HATCH = EXISTING CONDITIONS TO REMAIN

- EGRESS OCCUPANCY OF DOORS OR STAIRS
- MAXIMUM ALLOWABLE EGRESS OCCUPANCY OF DOORS AND STAIRS
- ROOM AREA IN SQUARE FEET
- ROOM OCCUPANT LOAD
- OCCUPANCY LOAD

Interior Fit Out - Building 1 at 8774 Scott Swamp Road

8774 Scott Swamp Rd Farmington, CT 06032

Owner: Dan Pizzoferrato

Drawn: AP
Issued: 03-11-2024
Status: PERMIT

Revisions		
NO	DATE	DESCRIPTION

A-101

BUILDING 1 - OVERALL PLAN
Copyright © 2024

1 GROUND LEVEL PLAN (0'-0") - BUILDING 1 - OVERALL

1/8" = 1'-0"