

FOR LEASE

ONE MONUMENT AVENUE

413 STUART CIRCLE | RICHMOND, VIRGINIA



CUSHMAN &
WAKEFIELD

THALHIMER

ONE MONUMENT AVENUE

RICHMOND, VIRGINIA



AVAILABILITY

- FIRST FLOOR | 7,995 SF
- *FIRST FLOOR CAN BE DIVIDED INTO 4,725 & 3,230 SF*
- SUITE 300 | 1,569 SF



PROPERTY FEATURES

- WELL LOCATED NEAR VIRGINIA COMMONWEALTH UNIVERSITY, CBD, SCOTT'S ADDITION
- MODERN OFFICE LAYOUTS
- COMMON CONFERENCE ROOM
- ROOFTOP DECK
- FITNESS CENTER
- WELL-APPOINTED COMMON AREAS



SPACE FEATURES

- GLASS FRONTED OFFICES
- OPEN WORK AREA
- FINISHES IN GREAT CONDITION



PARKING

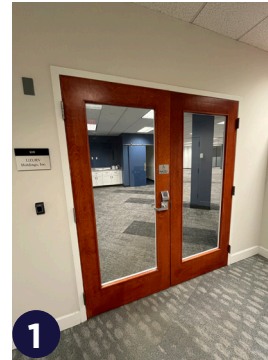
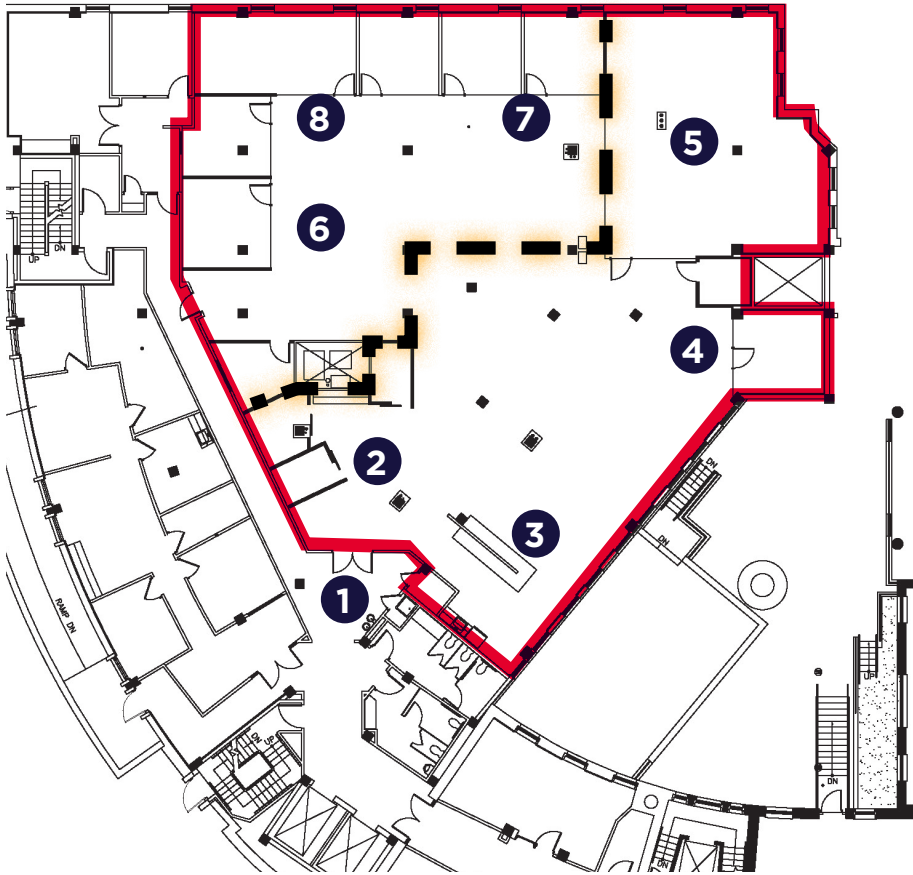
- PLENTIFUL PARKING IN PARKING GARAGE ACROSS MONUMENT AVENUE

AMENITY SPACES



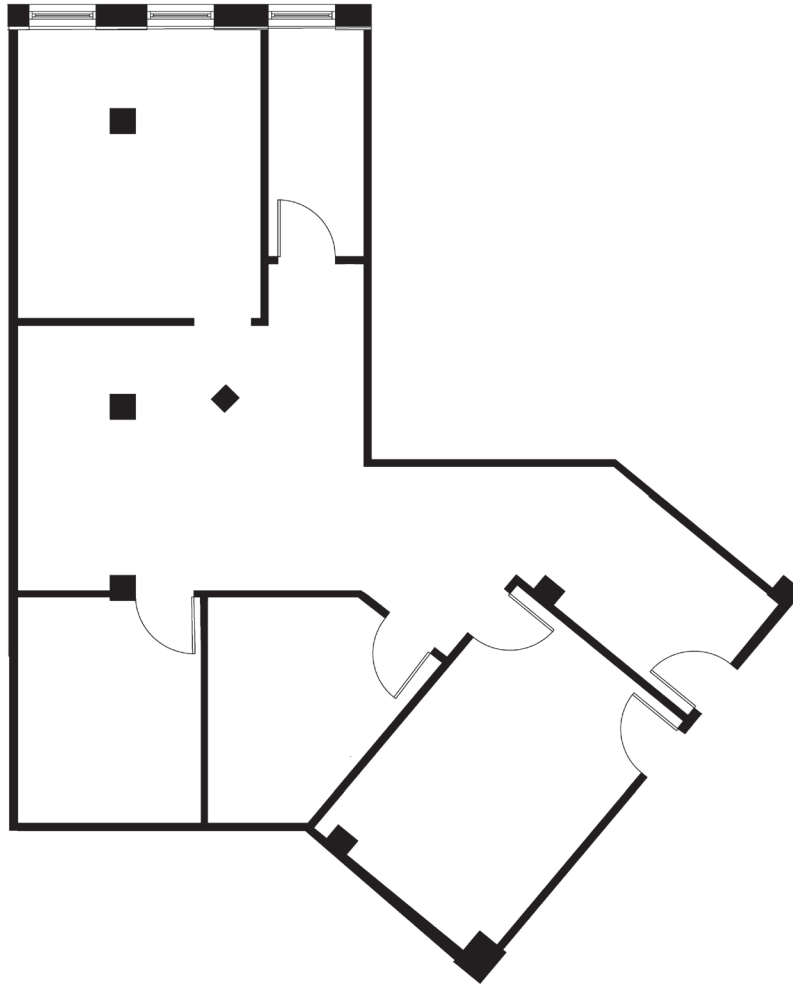
ONE MONUMENT AVENUE FLOORPLAN

FIRST FLOOR - 7,955 SF AVAILABLE - CAN BE DIVIDED TO 4,725 & 3,230 SF



ONE MONUMENT AVENUE FLOORPLAN

THIRD FLOOR - 1,569 SF AVAILABLE



FOR MORE INFORMATION, CONTACT:

AMY BRODERICK

Senior Vice President
804 344 7189
amy.broderick@thalhimer.com

KATE HOSKO

Vice President
804 344 7169
kate.hosko@thalhimer.com

Thalhimer Center
11100 W. Broad Street
Glen Allen, VA 23060
thalhimer.com

Independently Owned and Operated / A Member of the Cushman & Wakefield Alliance

Cushman & Wakefield | Thalhimer © 2025. No warranty or representation, express or implied, is made to the accuracy or completeness of the information contained herein, and same is submitted subject to errors, omissions, change of price, rental or other conditions, withdrawal without notice, and to any special listing conditions imposed by the property owner(s). As applicable, we make no representation as to the condition of the property (or properties) in question.



**CUSHMAN &
WAKEFIELD**

THALHIMER