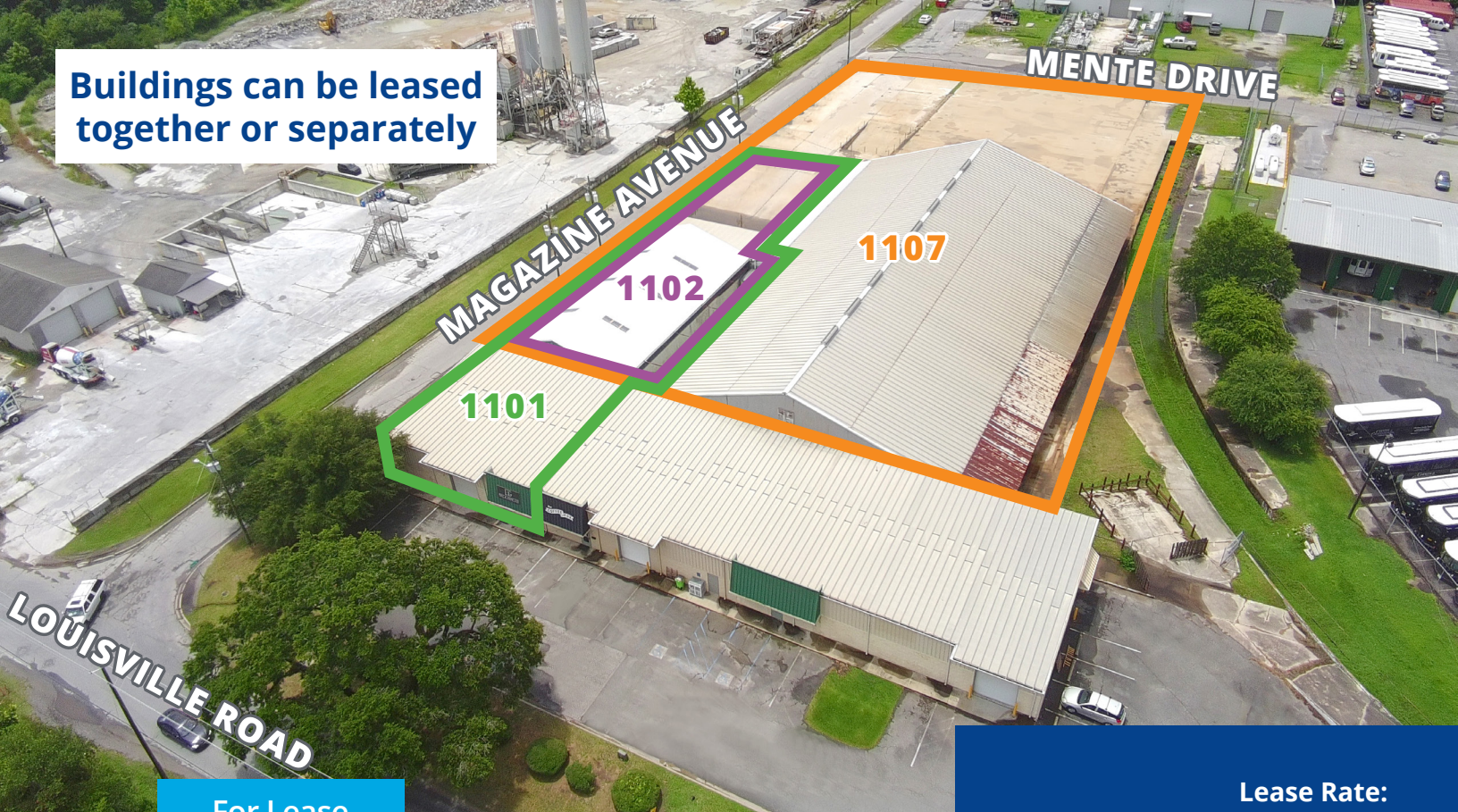


Buildings can be leased  
together or separately



For Lease

## Louisville Road Commercial Park

Louisville Road & Mente Drive  
Savannah, GA 31415

- Louisville Road Commercial Park is an industrial building park strategically located to offer unparalleled advantages for businesses seeking optimal connectivity and access to major transportation arteries
- Close proximity to the Port of Savannah - less than 1 mile from Gate 3 at Ocean terminal and 4.0 miles from Garden City Terminal
- Located 1 mile from Downtown Savannah
- Unparalleled access to Interstate 16 and Interstate 95

### Leasing Opportunities Available

- **1101 Louisville Road:** ±7,500 SF building, ±440 SF office newly renovated, 1 drive-in door, loading dock
- **1102 Mente Drive:** ±4,500 SF storage space with loading dock, ±0.12 AC paved outdoor storage
- **1107 Louisville Road:** ±29,171 SF building, 2 drive-in doors, external loading dock, ±0.84 AC fully paved outdoor storage
- **Combined Total:** ±32,171 SF
- *Buildings can be leased together or separately*

Lease Rate:

**1101 Louisville Road**  
\$14.90/SF NNN

**1102 Mente Drive**  
\$11.50/SF NNN

**1107 Louisville Road**  
\$7.50/SF NNN

**George Brown**  
Associate

Office +1 912 307 2277  
george.brown@colliers.com

**Ryan Bergman**  
Associate

Office +1 912 306 3188  
ryan.bergman@colliers.com

**David Sink, SIOR**  
Principal

Office +1 912 662 8010  
david.sink@colliers.com

Colliers

**Colliers | Savannah**

545 E. York Street, Savannah, GA  
+1 912 233 7111  
colliers.com/savannah

Accelerating success.



1101 Louisville Road | ±7,500 SF

Lease Rate:  
\$14.90/SF NNN



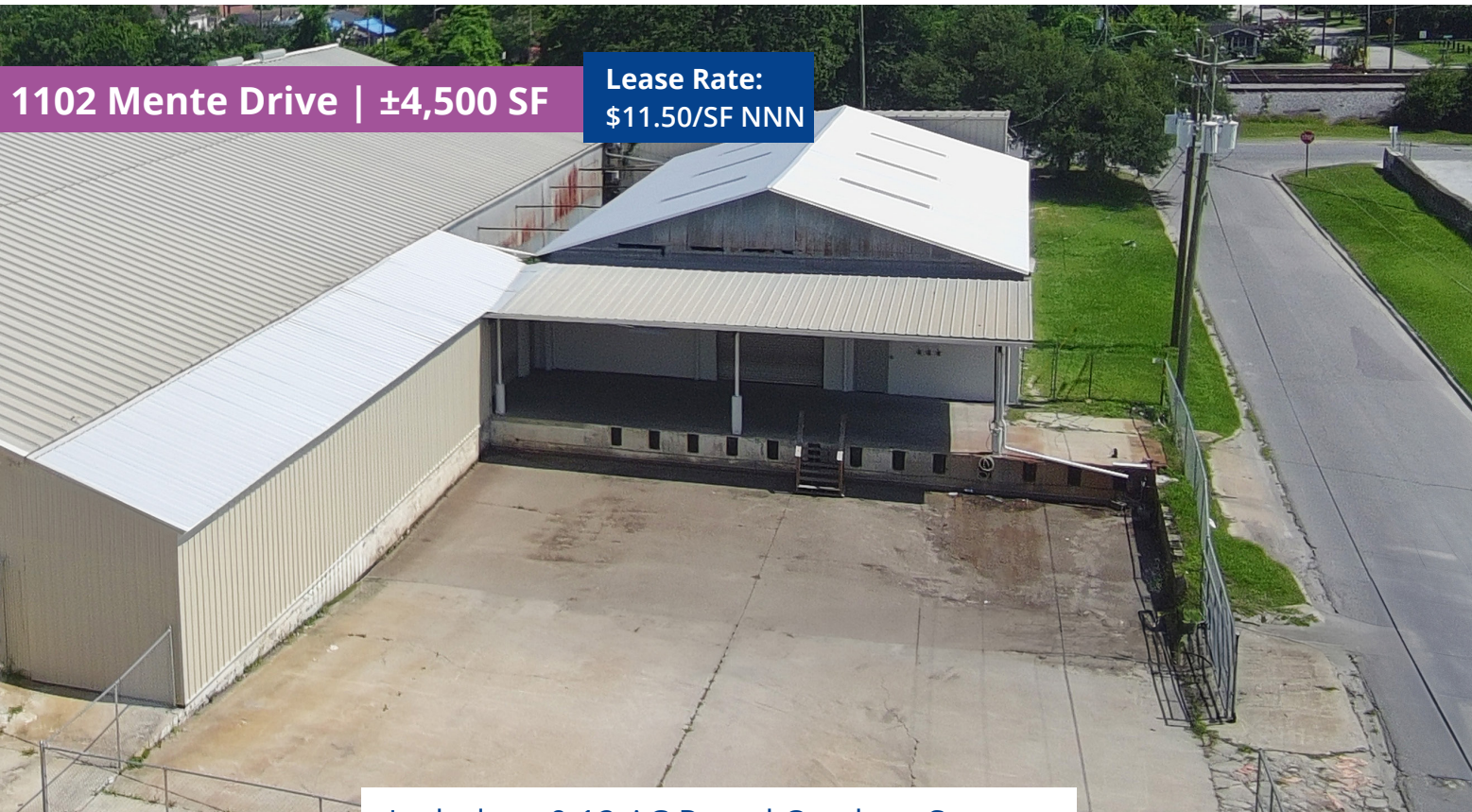
Renovated Office | ±400 SF





1102 Mente Drive | ±4,500 SF

Lease Rate:  
\$11.50/SF NNN



Includes ±0.12 AC Paved Outdoor Storage





1107 Louisville Road | ±29,171 SF

Lease Rate:  
\$7.50/SF NNN

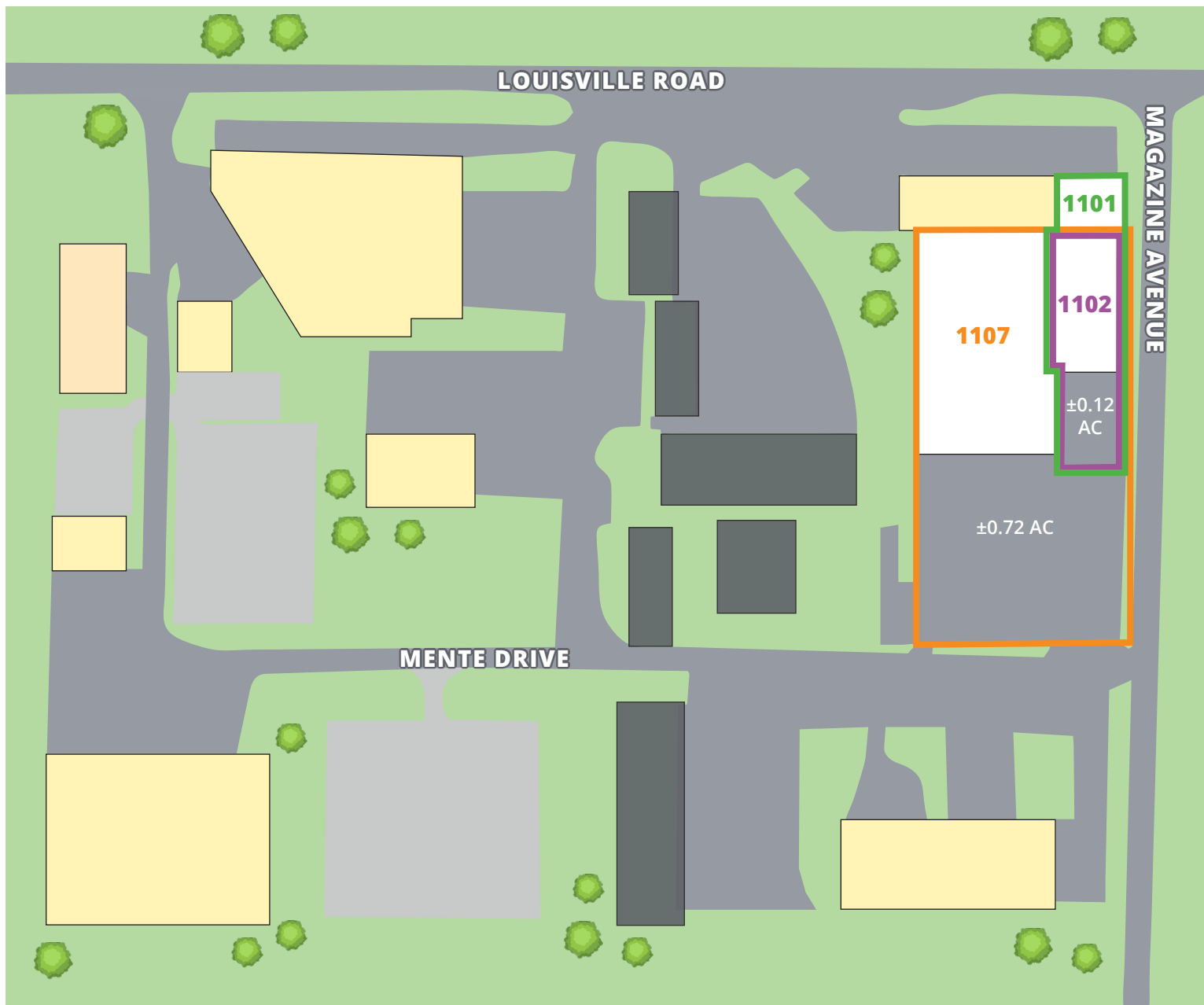


Includes ±0.84 AC Paved Outdoor Storage





# Site Plan & Availabilities



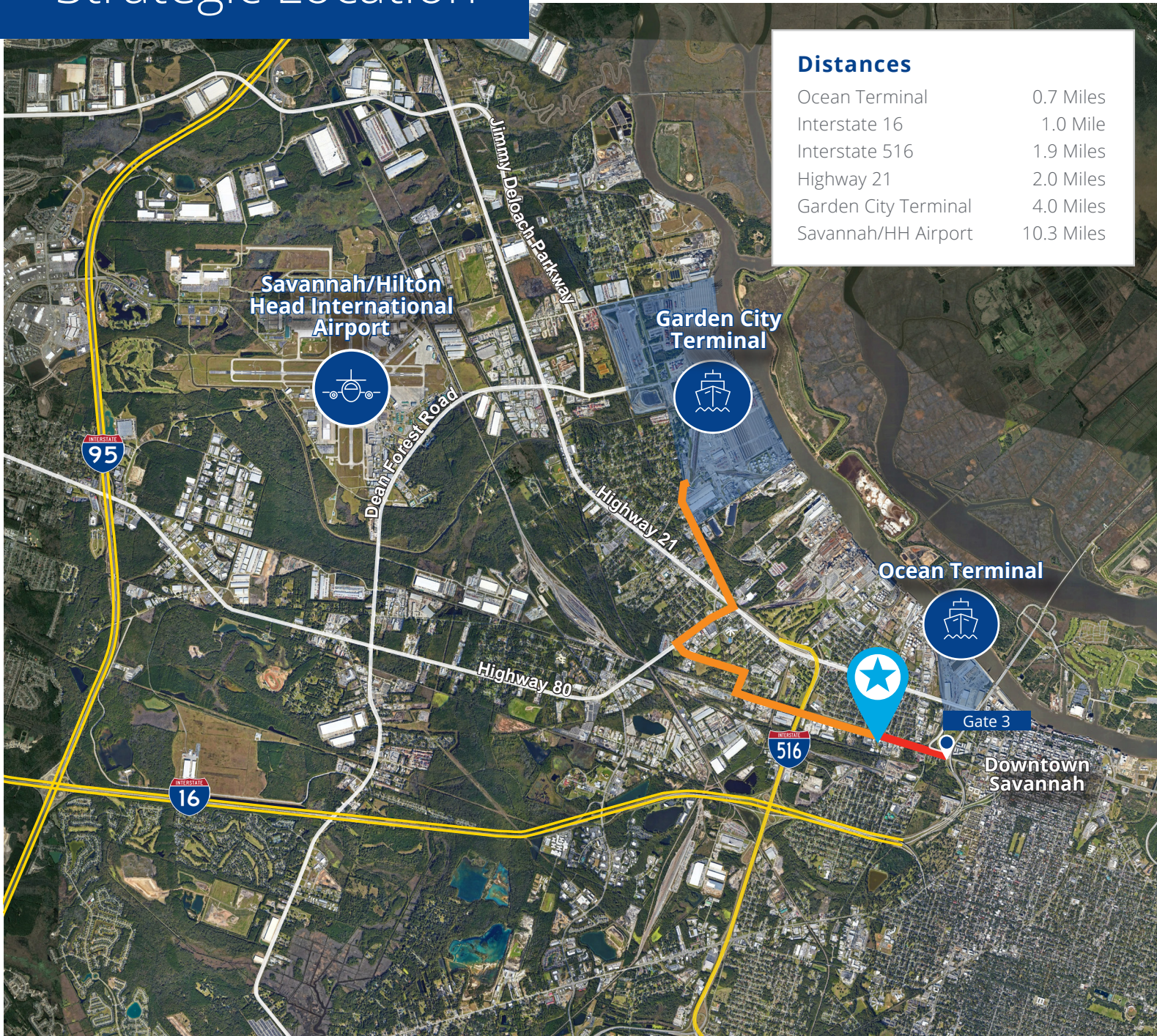
**Buildings can be leased together or separately**

## Available Buildings

Address	Size	Drive-in Doors	Outdoor Storage	Clear Height	Availability Date	Rental Rate
<b>1101 Louisville Road</b>	±7,500 SF	1	±0.12 AC	12' - 16'	Now	\$14.90/SF NNN
<b>1102 Mente Drive</b>	±4,500 SF	0	±0.12 AC	16'	Now	\$11.50/SF NNN
<b>1107 Louisville Road</b>	±29,171 SF	2	±0.84 AC	12' - 16'	Now	\$7.50/SF NNN
<b>Combined Total</b>	±32,171 SF	3	±0.84 AC	12' - 16'	Now	Please Inquire



# Strategic Location



## Contact

Colliers

### George Brown

Associate

Office +1 912 307 2277

[george.brown@colliers.com](mailto:george.brown@colliers.com)

### Ryan Bergman

Associate

Office +1 912 306 3188

[ryan.bergman@colliers.com](mailto:ryan.bergman@colliers.com)

### David Sink, SIOR

Principal

Office +1 912 662 8010

[david.sink@colliers.com](mailto:david.sink@colliers.com)

### Colliers | Savannah

545 E. York Street, Savannah, GA

+1 912 233 7111

[colliers.com/savannah](http://colliers.com/savannah)

This document has been prepared by Colliers International for advertising and general information only. Colliers International makes no guarantees, representations or warranties of any kind, expressed or implied, regarding the information including, but not limited to, warranties of content, accuracy and reliability. Any interested party should undertake their own inquiries as to the accuracy of the information. Colliers International excludes unequivocally all inferred or implied terms, conditions and warranties arising out of this document and excludes all liability for loss and damages arising there from. This publication is the copyrighted property of Colliers International and/or its licensor(s). ©2025. All rights reserved.