



**FOR LEASE**  
±3,000 - 20,300 SF

# THE PARK AT FOWLER CROSSING

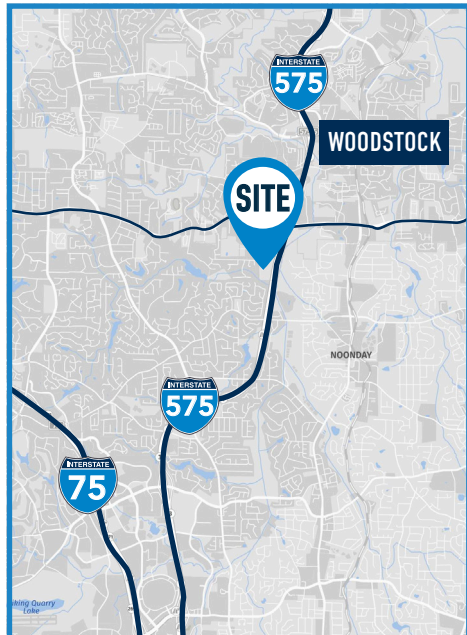
585 - 665 Molly Lane

Office Space  
Woodstock, GA  
30189




## OVERVIEW:

- » Collection of 8 single-story buildings across 40-acre office park
- » Divisible and combinable suites ranging in size from ±3,000 SF to ±20,300 SF
- » Ample parking
- » Immediate access to I-575
- » Brick and glass construction
- » Developed by Fowler Properties
- » Office park surrounded by 9-hole, par-3 golf course with lighted driving range
- » Surrounded by national retailers like the Microtel Hotel, TacoMac, Schlotzky's Deli, Wells Fargo, BJ's Wholesale, IHOP, Target, Kohl's, Steak & Shake, Home Depot, Planet Fitness, Lowe's, and many more



**Jake Parker**  
770.891.6429  
jparker@skcr.com

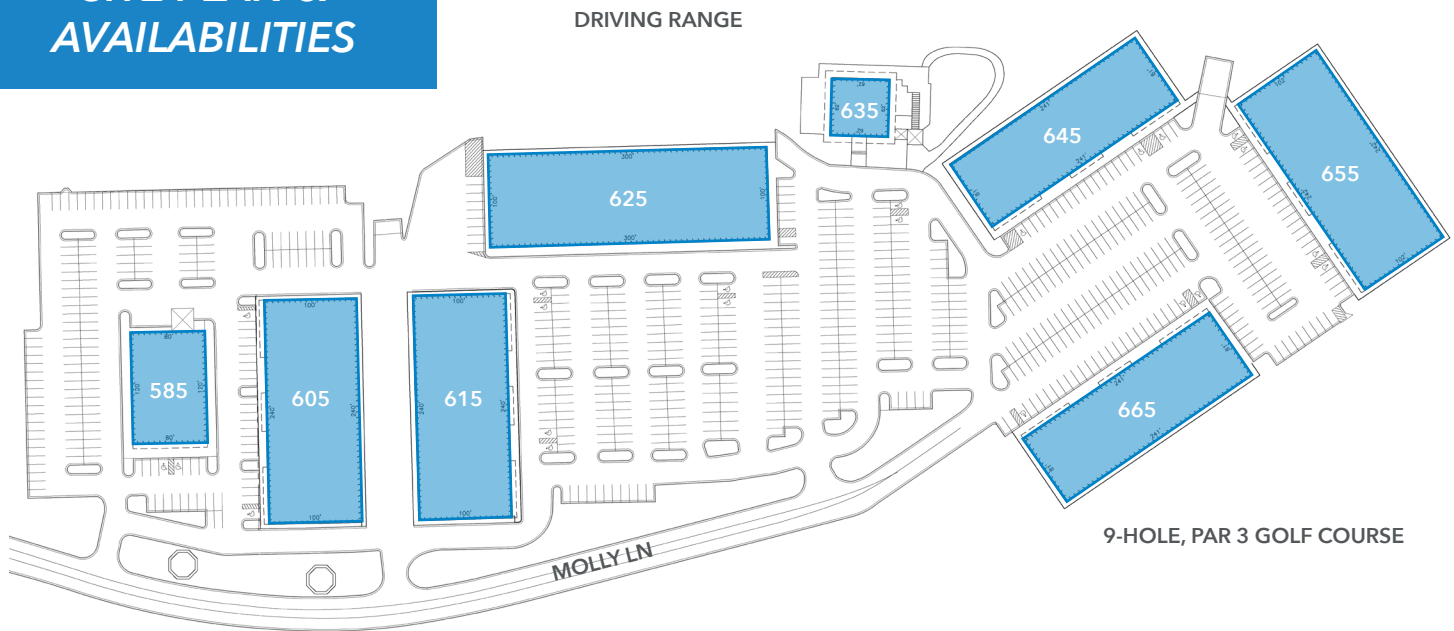
**Chris Little**  
770.380.8270  
clittle@skcr.com

**Furman Wood**  
404.803.8412  
fwood@skcr.com

# THE PARK AT FOWLER CROSSING

585 - 665 Molly Lane

## SITE PLAN & AVAILABILITIES



## AVAILABILITIES:

### 625 Molly Lane

- » **Suite 120:** 6,000 SF  
52 cubicles  
Furnished training room, conference room
- » **Suite 130:** 2,929 SF  
Open reception area, bullpen  
7 private offices
- » **Suite 140:** 4,975 SF  
Open reception area  
7 private offices  
Large training area  
9 privacy call booths

### 645 Molly Lane

- » **Suite 130:** 3,323 SF

### 655 Molly Lane

- » **Suite 110:** 10,106 SF
- » **Suite 140:** 4,625 SF
- » **Suite 150:** 5,583 SF
- » **Suite 110 - 150:** 20,314 SF

### 665 Molly Lane

- » **Suite 110:** 2,974 SF  
Recently renovated: new carpet, LED lights, paint  
Mostly open floor plan, open break area  
1 private office  
1 large storage/IT room

Jake Parker  
770.891.6429  
jparker@skcr.com

Chris Little  
770.380.8270  
clittle@skcr.com

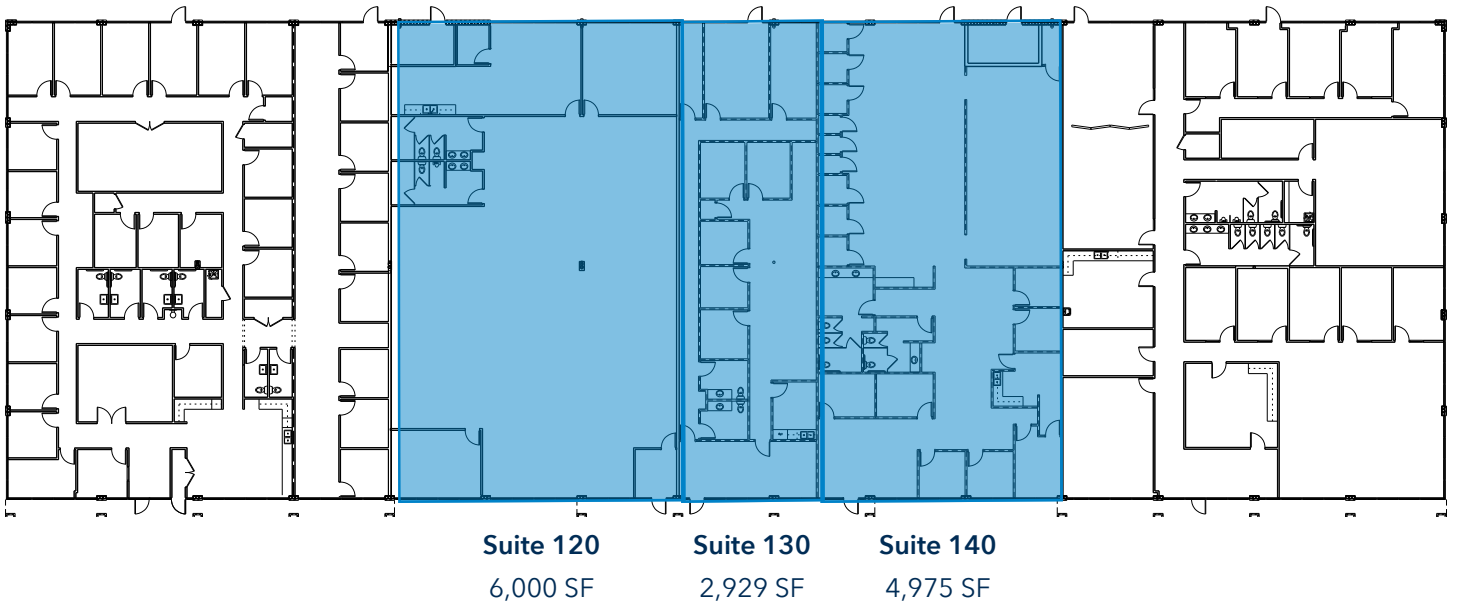
Furman Wood  
404.803.8412  
fwood@skcr.com



# THE PARK AT FOWLER CROSSING

625 Molly Lane

**SUITES 120 - 140**  
**2,929 SF - 13,904 SF**



Jake Parker  
770.891.6429  
jparker@skcr.com

Chris Little  
770.380.8270  
clittle@skcr.com

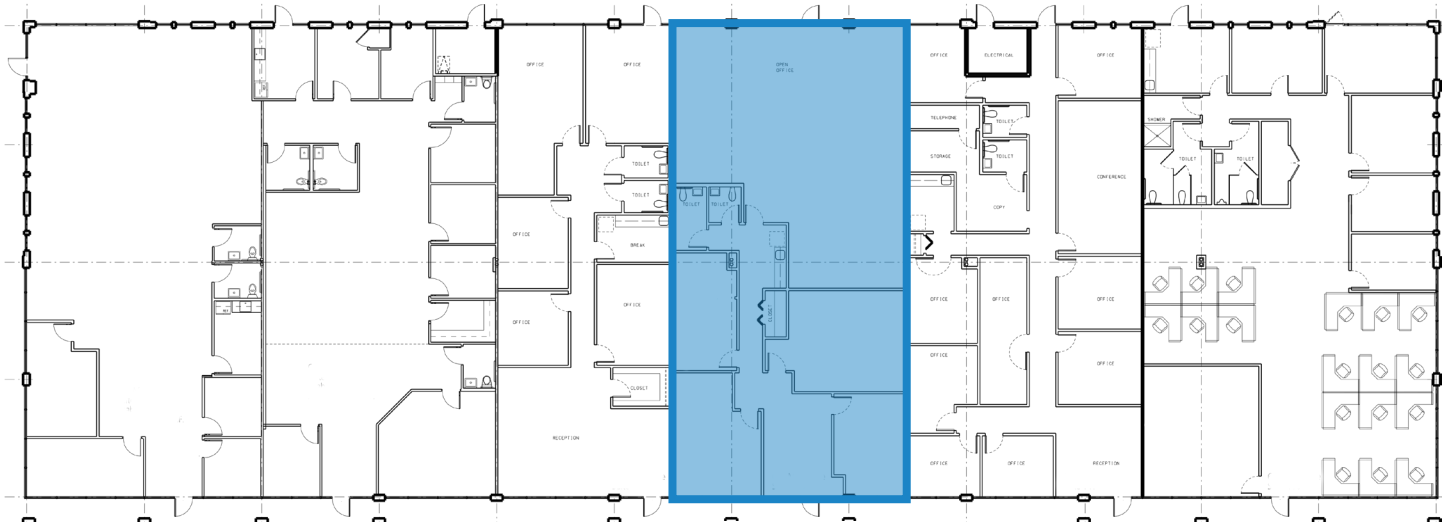
Furman Wood  
404.803.8412  
fwood@skcr.com



# THE PARK AT FOWLER CROSSING

645 Molly Lane

**SUITE 130**  
**3,323 SF**



**Suite 130**  
3,323 SF

Jake Parker  
770.891.6429  
jparker@skcr.com

Chris Little  
770.380.8270  
clittle@skcr.com

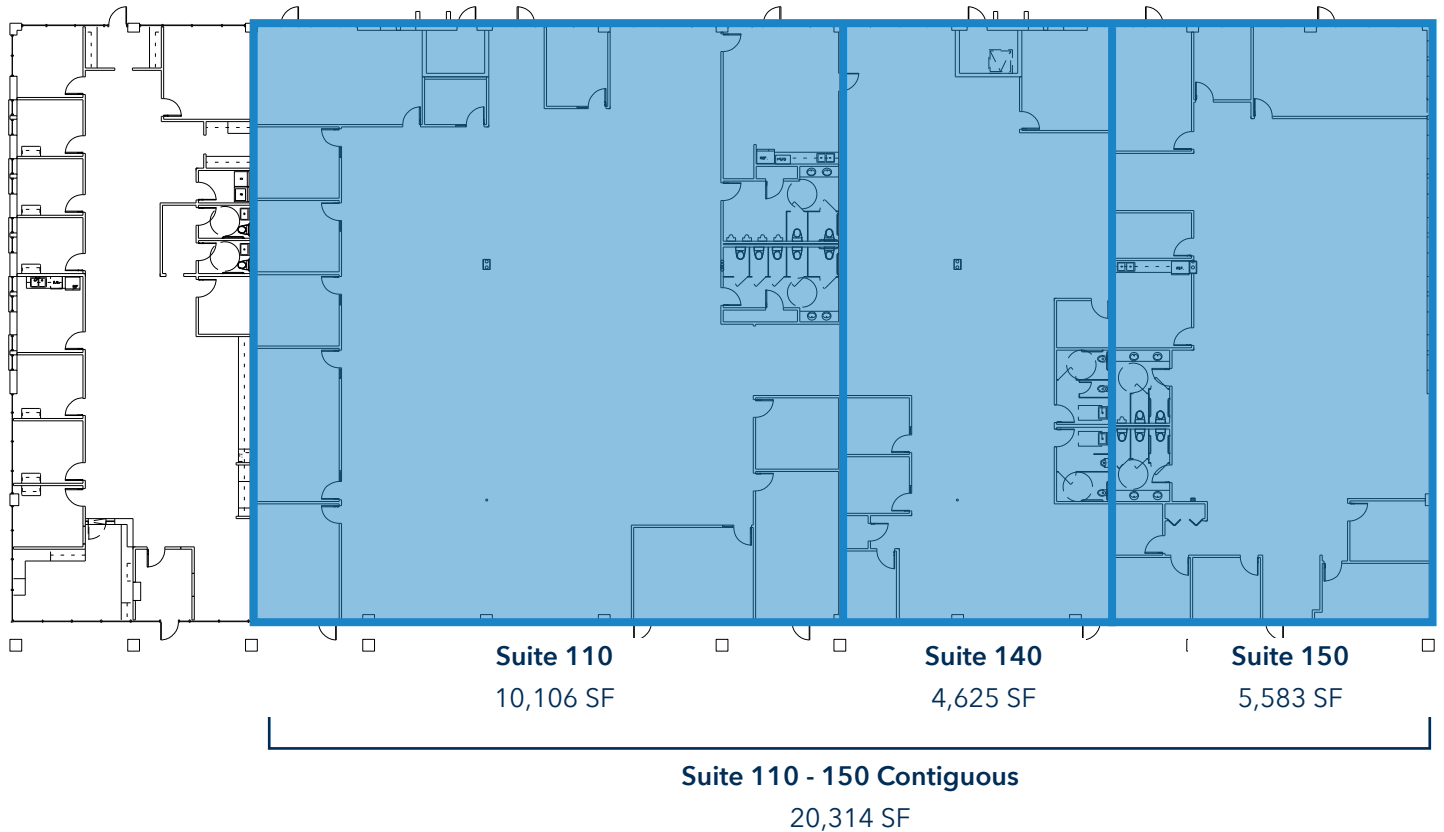
Furman Wood  
404.803.8412  
fwood@skcr.com



# THE PARK AT FOWLER CROSSING

655 Molly Lane

**SUITES 110 - 150**  
**4,625 SF - 20,314 SF**



**Jake Parker**  
770.891.6429  
jparker@skcr.com

**Chris Little**  
770.380.8270  
clittle@skcr.com

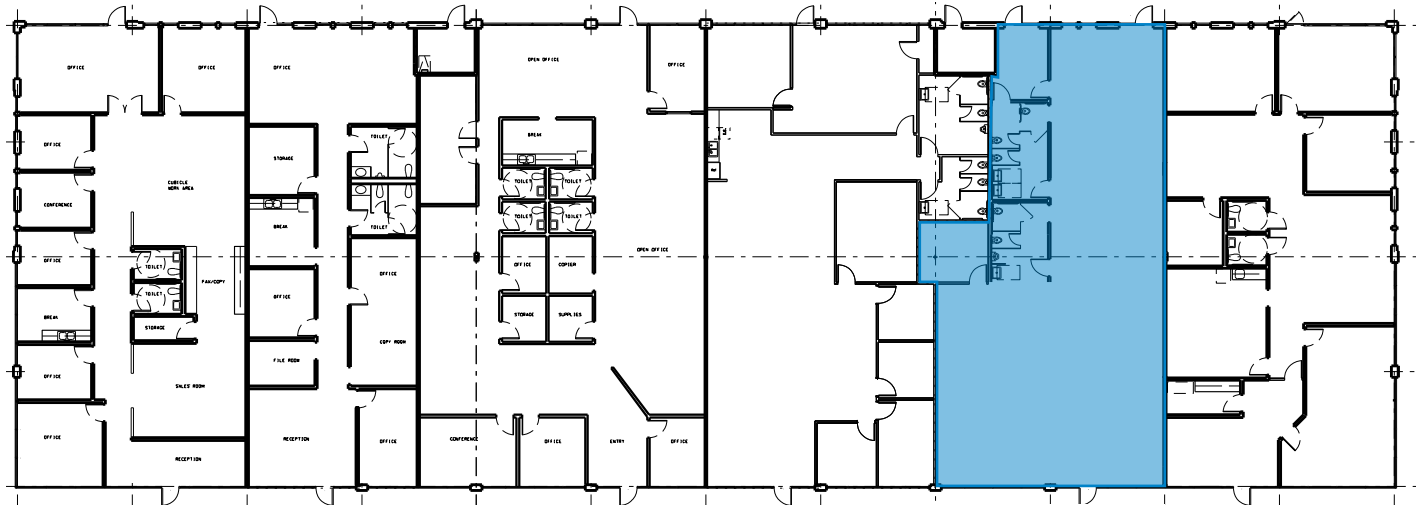
**Furman Wood**  
404.803.8412  
fwood@skcr.com



# THE PARK AT FOWLER CROSSING

665 Molly Lane

**SUITE 110**  
**2,974 SF**



**Suite 110**  
**2,974 SF**

Jake Parker  
770.891.6429  
jparker@skcr.com

Chris Little  
770.380.8270  
clittle@skcr.com

Furman Wood  
404.803.8412  
fwood@skcr.com



# THE PARK AT FOWLER CROSSING

585 - 665 Molly Lane

## NEARBY AMENITIES



## RESTAURANTS

- A Chicken Salad Chick
- B Taco Mac
- C Steak n Shake
- D Starbucks
- E Hacienda Cantina
- F Schlotzskys  
Smoothie King
- G IHOP
- H Caribou Coffee
- I Waffle House  
Starbucks
- J Arby's
- K Chick-fil-A  
Whataburger
- L Dunkin Donuts
- M Moes Southwest Grill  
Firehouse Subs
- N Raising Cane's
- O McDonalds
- P Subway
- Q Chipotle Mexican Grill
- R Popeyes  
Krispy Kreme

## SERVICES

- 1 CVS Pharmacy
- 2 Aylo Health
- 3 Home Depot  
AT&T
- 4 Delta Community Credit Union
- 5 Kohl's
- 6 Planet Fitness
- 7 Lowes
- 8 Fedex- Office Store
- 9 Verizon
- 10 Quicktrip
- 11 Hennessy Honda of Woodstock
- 12 Cherokee Golf Center
- 13 Peachtree Immediate Care
- 14 **Woodstock Commons**
  - Goodwill
  - Firestone Service Center
- 15 **St. Thomas Square**
  - Impact PT
  - Superior Stair
  - Honey Bee Salon & Spa
  - Top Notch Appliance

## HOTEL

- I Microtel Hotel
- II Fairfield Inn & Suites
- III In-Town Suites
- IV Hampton Inn
- V Comfort Suites

## GROCERY

- 1 Target
- 2 BJ's Wholesale
- 3 Sam's Club

Jake Parker  
770.891.6429  
jparker@skcr.com

Chris Little  
770.380.8270  
clittle@skcr.com

Furman Wood  
404.803.8412  
fwood@skcr.com

