

AVAILABLE FOR SALE

540 S. 12TH STREET | RICHMOND, CA



EXCLUSIVE AGENTS:

Ryan Martens, Principal

E \ rmartens@lee-associates.com

P \ 510.903.7605 | LIC# 01709157

Craig Hagglund, SIOR/Principal

E \ chagglund@lee-associates.com

P \ 510.903.7611 | LIC# 01090730

Lee & Associates Oakland Commercial Real Estate \ 555 12th Street, Suite 1725, Oakland, CA 94607 \ www.lee-associates.com

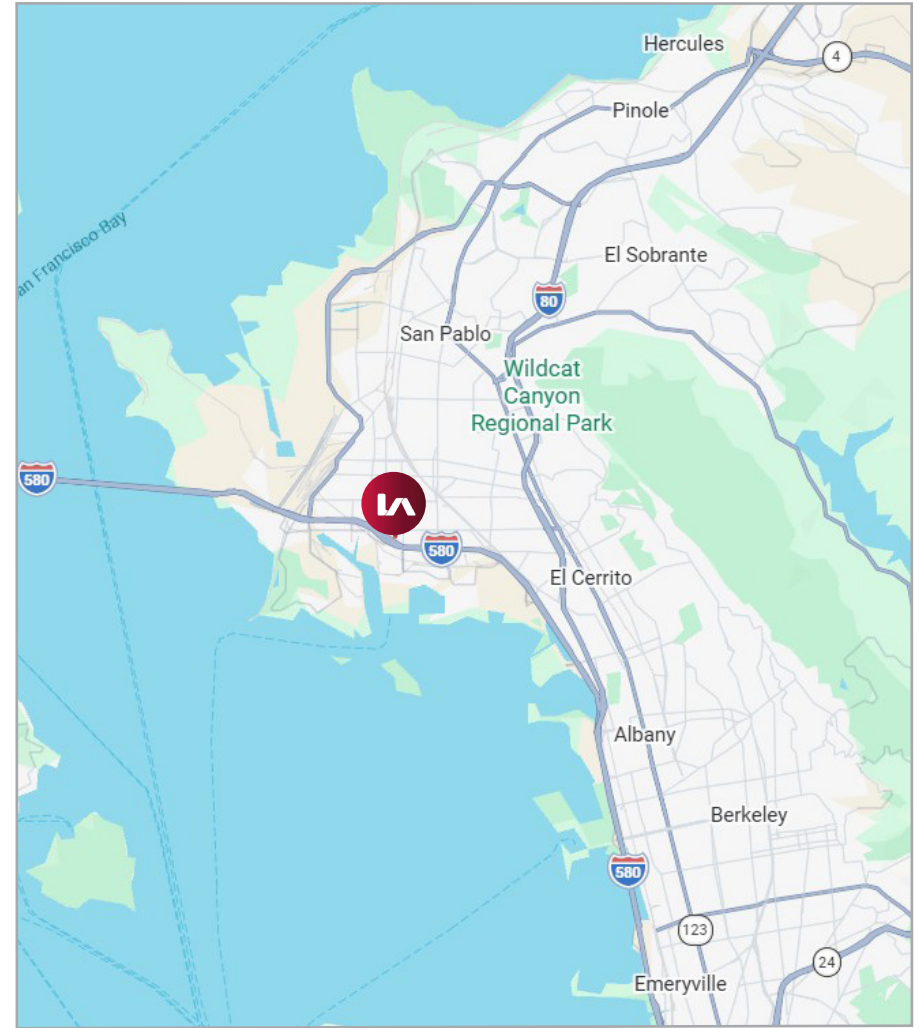
All information furnished regarding property for sale, rental or financing is from sources deemed reliable, but no warranty or representation is made to the accuracy thereof and same is submitted to errors, omissions, change of price, rental or other conditions prior to sale, lease or financing or withdrawal without notice. No liability of any kind is to be imposed on the broker herein.

AVAILABLE FOR SALE

540 S. 12TH STREET | RICHMOND, CA

FEATURES:

- 14,300± SF Industrial on 28,125± SF Lot
- Private Offices
- Additional Mezzanine Storage Space
- 3 Roll Up Doors (14')
- 20' Clear Height
- Secured Fenced Yard
- Surveillance System
- Built in 1964
- Sale Price: \$3,149,000
- Call Exclusive Agents to Tour



EXCLUSIVE AGENTS:

Ryan Martens, Principal
E \\ rmartens@lee-associates.com
P \\ 510.903.7605 | LIC# 01709157

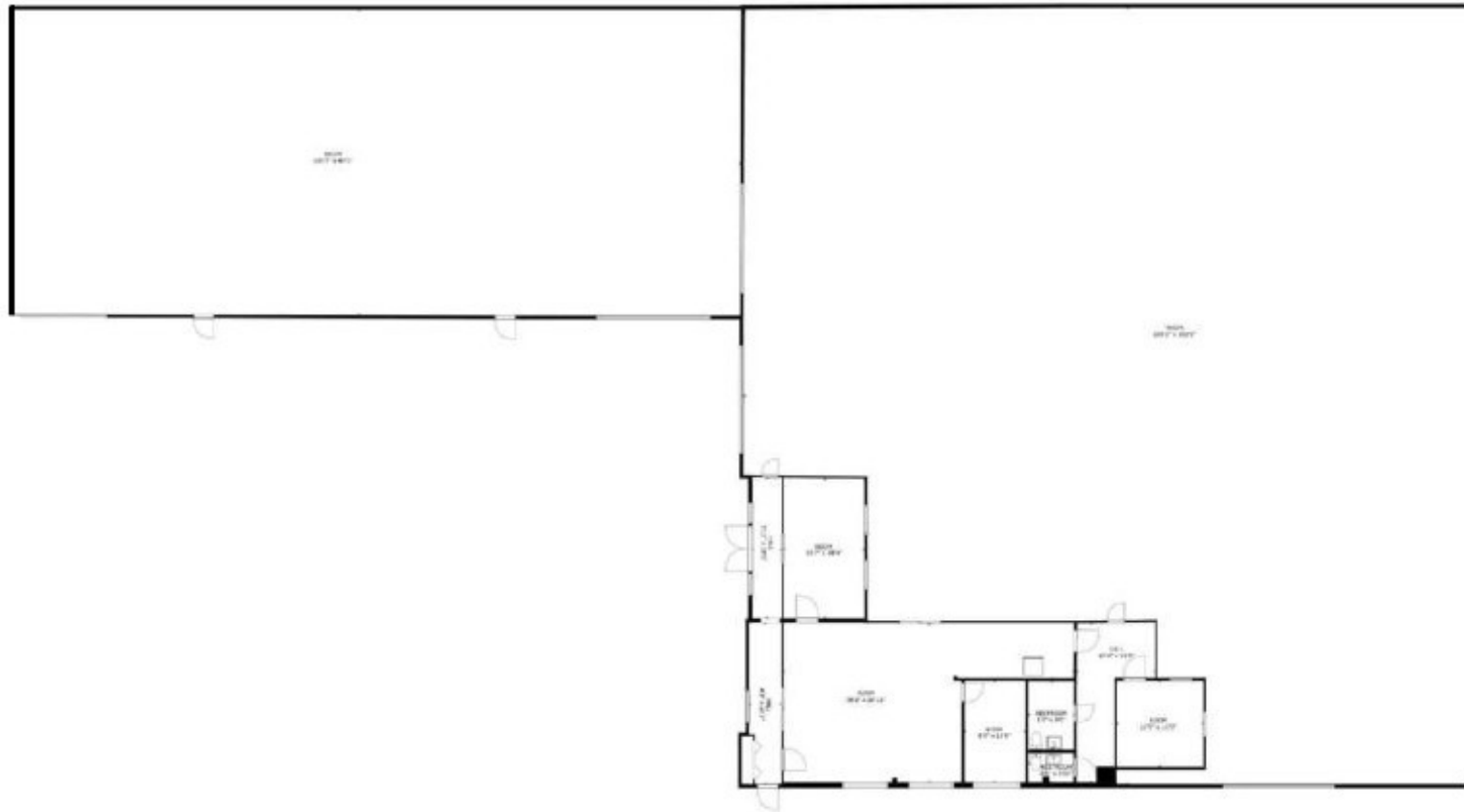
Craig Hagglund, SIOR/Principal
E \\ chagglund@lee-associates.com
P \\ 510.903.7611 | LIC# 01090730

Lee & Associates Oakland Commercial Real Estate \ 555 12th Street, Suite 1725, Oakland, CA 94607 \ www.lee-associates.com

All information furnished regarding property for sale, rental or financing is from sources deemed reliable, but no warranty or representation is made to the accuracy thereof and same is submitted to errors, omissions, change of price, rental or other conditions prior to sale, lease or financing or withdrawal without notice. No liability of any kind is to be imposed on the broker herein.

AVAILABLE FOR SALE

540 S. 12TH STREET | RICHMOND, CA



EXCLUSIVE AGENTS:

Ryan Martens, Principal

E \\ rmartens@lee-associates.com

P \\ 510.903.7605 | LIC# 01709157

Craig Hagglund, SIOR/Principal

E \\ chagglund@lee-associates.com

P \\ 510.903.7611 | LIC# 01090730

Lee & Associates Oakland Commercial Real Estate \ 555 12th Street, Suite 1725, Oakland, CA 94607 \ www.lee-associates.com

All information furnished regarding property for sale, rental or financing is from sources deemed reliable, but no warranty or representation is made to the accuracy thereof and same is submitted to errors, omissions, change of price, rental or other conditions prior to sale, lease or financing or withdrawal without notice. No liability of any kind is to be imposed on the broker herein.