

DIAMOND LAKE INDUSTRIAL CENTER I

MINNEAPOLIS
NORTHWEST

12999 Wilfred Ln N
Rogers, MN 55374



FOR LEASE

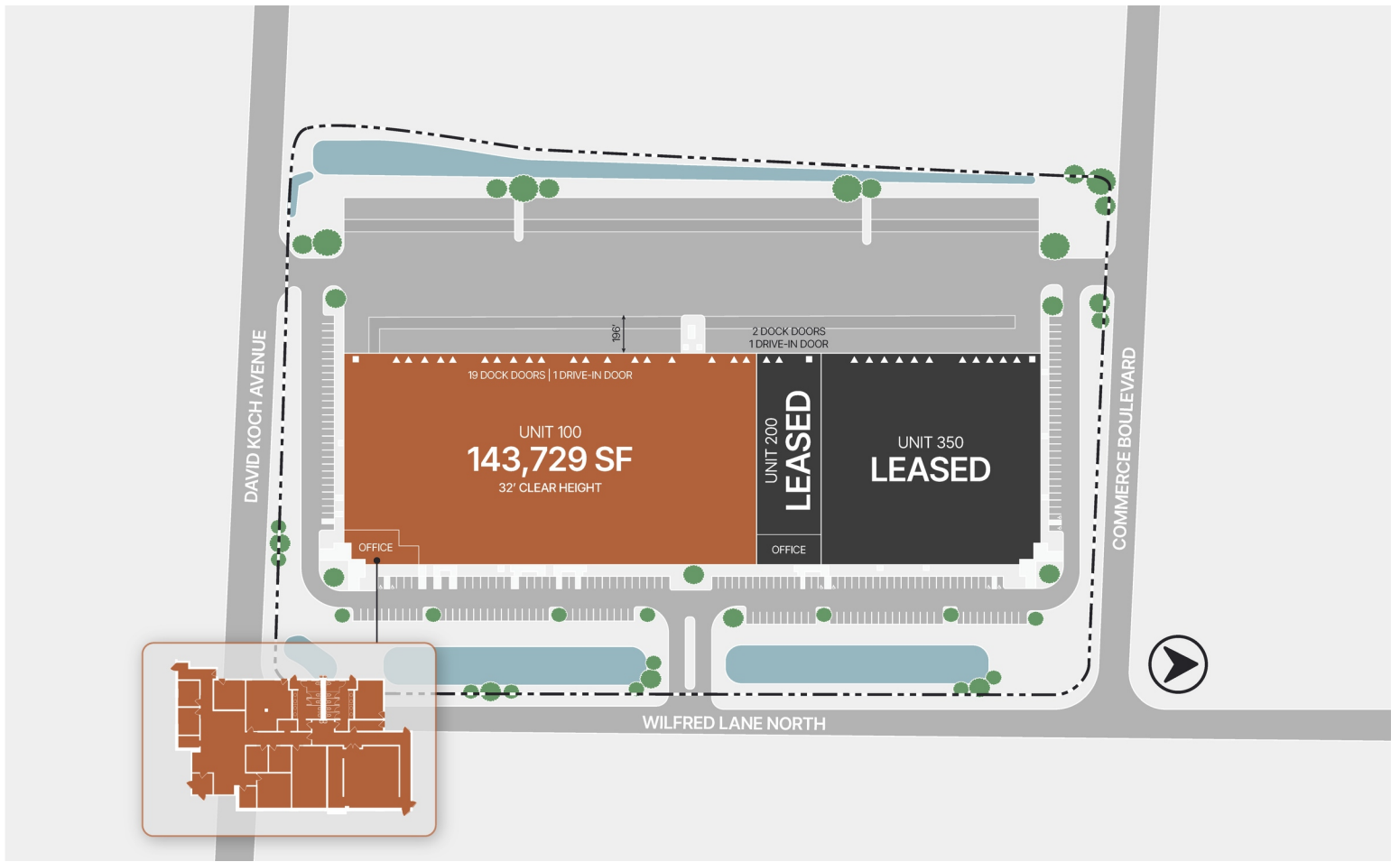
UNIT 100

100,000 - 143,729 SF



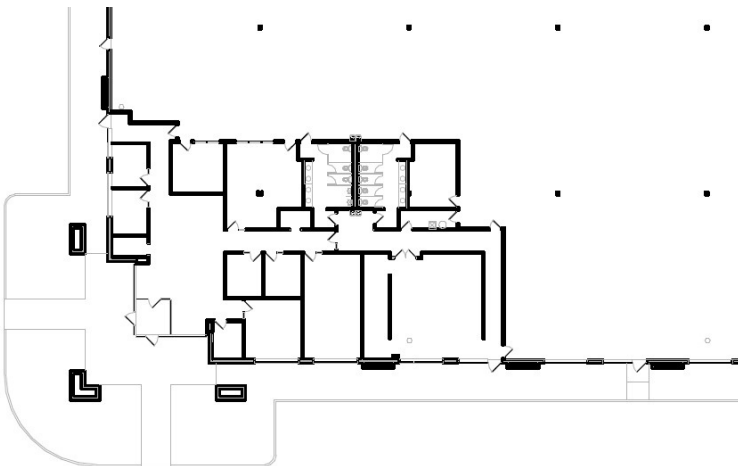
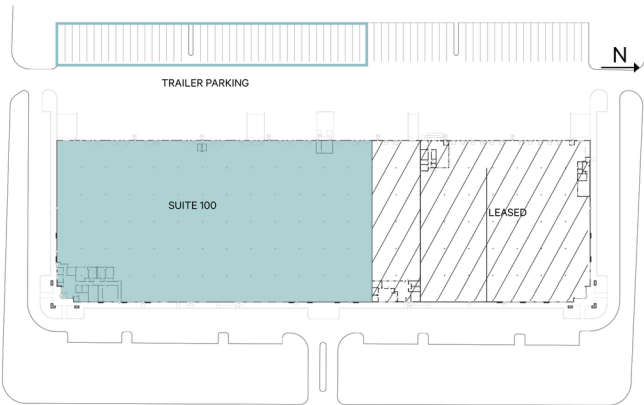
LEASED BY

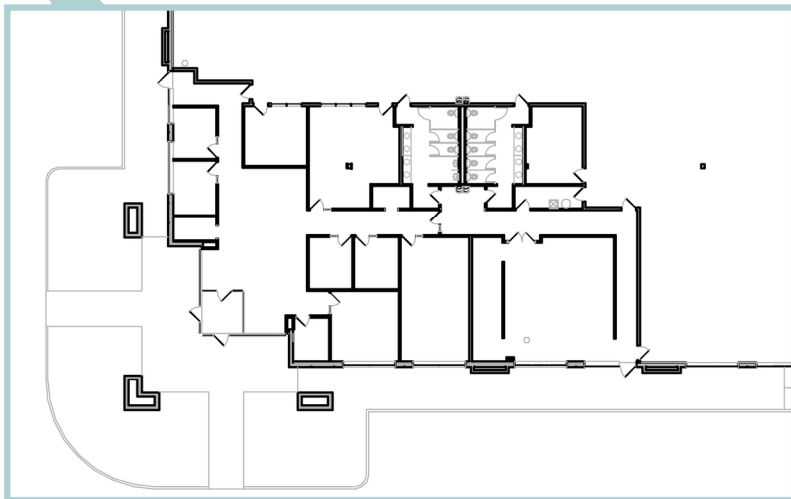
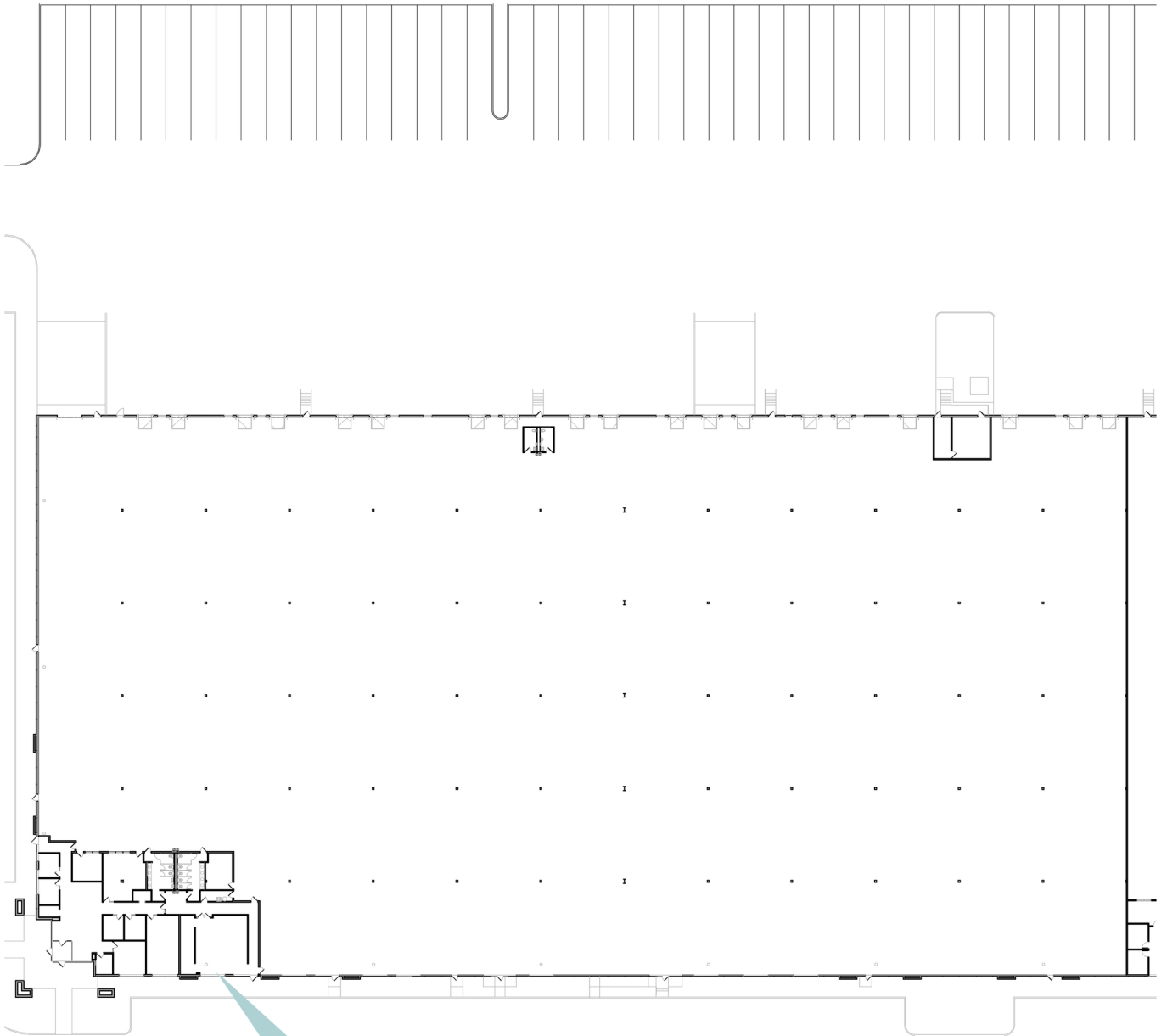
CBRE

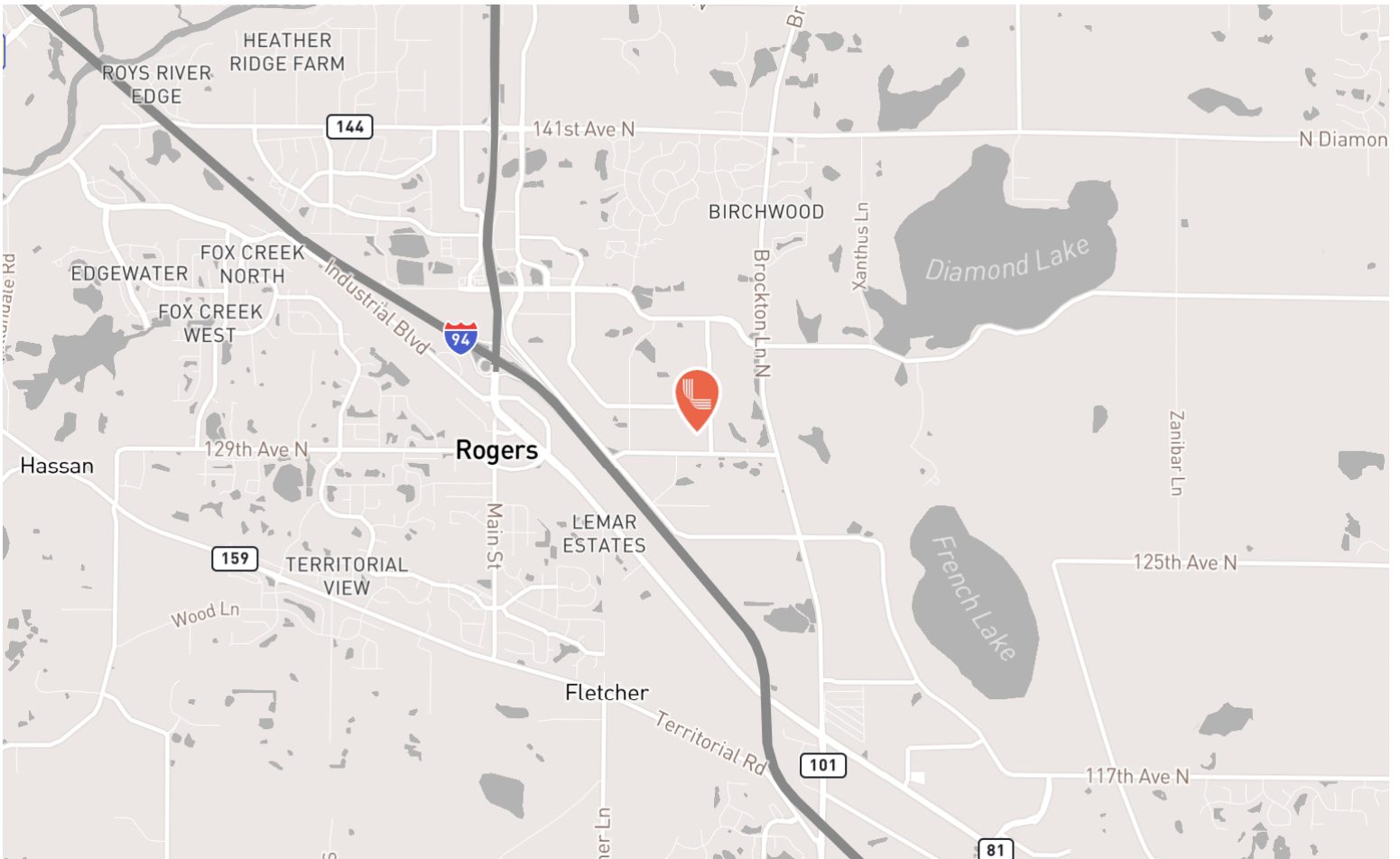


SPECIFICATIONS

Unit 100	143,729 SF Total
Warehouse	137,774 SF
Office	5,955 SF
Loading	17 fully equipped docks / Two 2' docks / One drive-in
Fully Air-Conditioned	Yes
Power	1600A, 480V, 3Phase
Trailer Parking	42 trailer stalls
Building Size	243,999 SF
Clear Height	32'
Column Spacing	40'6" x 45' typical
Building Depth	270'
Sprinkler	ESFR
Zoning	Industrial
Year Built	2000
Est. Tax/Ops	\$4.22 PSF Total (\$2.87 PSF Taxes, \$1.35 PSF Ops)







CONTACT INFORMATION

12999 Wilfred Lane N
Rogers, MN 55374

Matt Oelschlager

matt.oelschlager@cbre.com
(612) 532-4747

John Ryden

john.ryden@cbre.com
(612) 723-9313

Mike Bowen

mike.bowen@cbre.com
(612) 597-8488

Maxx Schindel

maxx.schindel@cbre.com
(218) 232-6901

This is not an offer or acceptance of an offer to lease space. A lease will only be offered or made in a written agreement signed by landlord. No representation or warranty of any kind is made by landlord unless set forth in a written definitive lease executed by the landlord.

© 2025 CBRE, Inc. All rights reserved. This information has been obtained from sources believed reliable but has not been verified for accuracy or completeness. CBRE, Inc. makes no guarantee, representation or warranty and accepts no responsibility or liability as to the accuracy, completeness, or reliability of the information contained herein. You should conduct a careful, independent investigation of the property and verify all information. Any reliance on this information is solely at your own risk. CBRE and the CBRE logo are service marks of CBRE, Inc. All other marks displayed on this document are the property of their respective owners, and the use of such marks does not imply any affiliation with or endorsement of CBRE. Photos herein are the property of their respective owners. Use of these images without the express written consent of the owner is prohibited.



LEASED BY

