

The Colliers logo is located in the top right corner. It consists of the word "Colliers" in a white serif font, centered within a blue rounded rectangle. Below the rectangle are three horizontal stripes: a yellow stripe on top, a red stripe in the middle, and a blue stripe on the bottom.The background of the entire page is a photograph of a modern industrial warehouse. The building is a single-story structure with a grey facade and vertical grey panels. A large grey roll-up door is partially open on the left. The address "7831" is printed vertically on a pillar. A red sports car is parked in the asphalt parking lot in front of the building. In the background, there are other industrial buildings and a clear blue sky.

Scottsdale Airpark | ±7,253 sf Freestanding Industrial Warehouse

**For Lease**

**7831 East Greenway Road  
Scottsdale, AZ 85260**

**Greg Hopley**

Designated Broker  
+1 480 655 3333  
greg.hopley@colliers.com

**Dillon Hopley**

Associate Vice President  
+1 480 655 3301  
dillon.hopley@colliers.com

*Looking South*

# Located in the Scottsdale Airpark

RARE freestanding  $\pm 7,253$  square foot industrial warehouse building in the Scottsdale Airpark that offers outside storage, and access to both truckwell and grade level loading. Zoned I-1 (Industrial Park), it sits on a  $\pm 0.80$ -acre lot, minutes away from the Scottsdale Quarter and Kierland.

Address

7831 E Greenway Road, Scottsdale 85260

Building Size / Parcel Size

$\pm 7,253$  sf /  $\pm 0.80$  acres

Parking

4.14/1,000 (30 Spaces)

Zoning

I-1 (Ind. Park), City of Scottsdale

Loading

1 Truck Well and 2 Grade Level

Outside Storage

Approx.  $\pm 3,600$  sf Fenced/Gated Yard

Clear Height

18 feet

Electrical-Power

600a, 277/480v, 3 phase

Call for Pricing





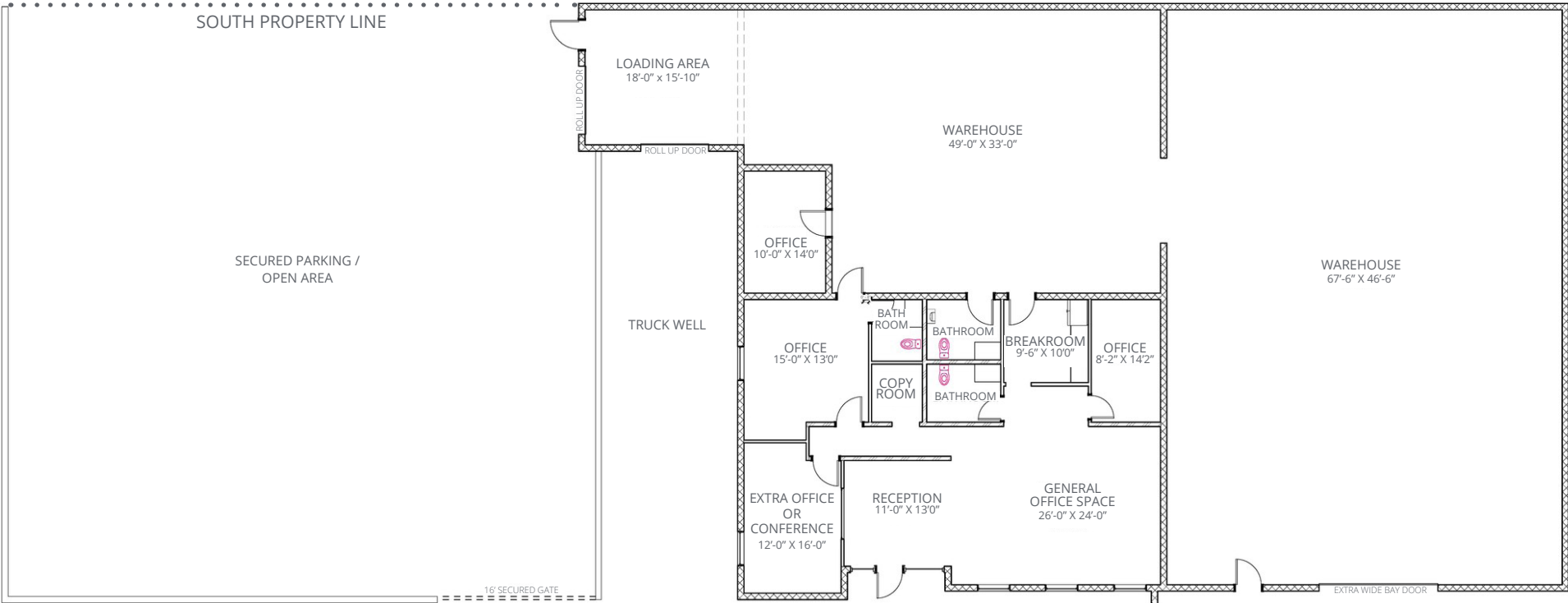
Secured Parking and Truck Well



Grade Level Glass Bay Door

# Floor Plan

- 2 Private Offices
- 1 Storage Room
- 1 Breakroom
- 3 Bathrooms
- 1 Copy Nook
- 1 Warehouse Office/Shop Room



\*floor plan is approximate and is not to scale

EAST GREENWAY ROAD



Scottsdale Airpark | ±7,253 sf Freestanding Industrial Warehouse

# For Lease

7831 E Greenway Road, Scottsdale

**Greg Hopley**  
Designated Broker  
+1 480 655 3333  
greg.hopley@colliers.com

**Dillon Hopley**  
Associate Vice President  
+1 480 655 3301  
dillon.hopley@colliers.com

**Colliers**  
8360 E Raintree Drive, Suite 130  
Scottsdale, Arizona 85260  
+1 480 596 9000



## Disclaimer

This document has been prepared by Colliers for advertising and general information only. Colliers makes no guarantees, representations or warranties of any kind, expressed or implied, regarding the information including, but not limited to, warranties of content, accuracy and reliability. Any interested party should undertake their own inquiries as to the accuracy of the information. Colliers excludes unequivocally all inferred or implied terms, conditions and warranties arising out of this document and excludes all liability for loss and damages arising there from. This publication is the copyrighted property of Colliers and /or its licensor(s). © 2024. All rights reserved. This communication is not intended to cause or induce breach of an existing listing agreement. CC Partners, LLC dba Colliers International Scottsdale