

EATONTOWN, NJ

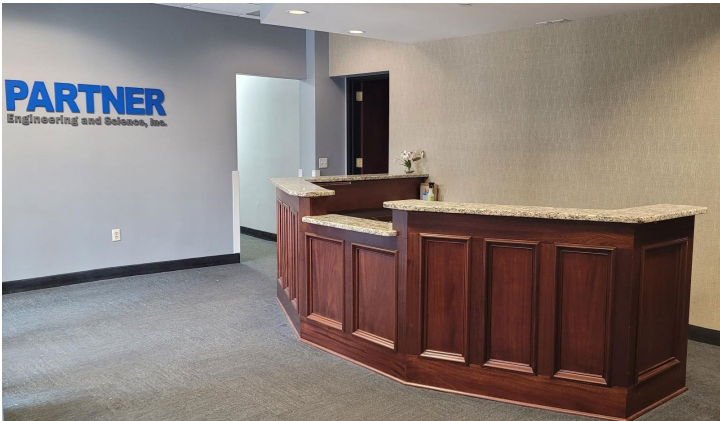
611 Industrial Way West

Office Space for Lease



Features

- 130,000 RSF building
- Available Immediately
- 5:1000 parking ratio
- Quick access to Garden State Parkway exit 105, Routes 18, 35 & 36
- Within minutes of I-195
- Monmouth Mall, Seaview Square Power Center, Jersey Shore Premium Outlets, variety of hospitality options as well as many other local area amenities available



Available Space

- **7,074 SF office space**
(floor plan on reverse side)



For information, please contact:

Adam Silver

t 732-687-0906

adam.silver@nmrk.com

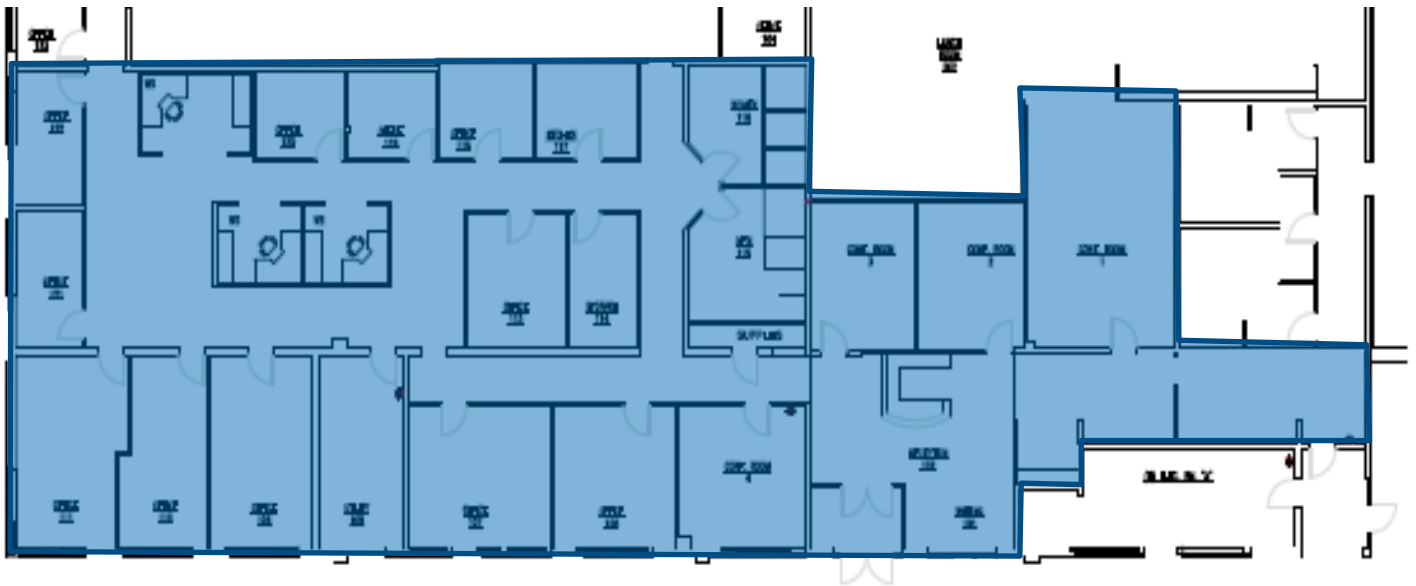
NEWMARK

One Tower Center Boulevard, Suite 1201, East Brunswick, NJ 08816

nmrk.com

Newmark, Licensed Real Estate Broker. The information contained herein has been obtained from sources deemed reliable but has not been verified and no guarantee, warranty or representation, either express or implied, is made with respect to such information. Terms of sale or lease and availability are subject to change or withdrawal without notice.

Floor Plan – 7,074 SF Available



One Tower Center Boulevard, Suite 1201, East Brunswick, NJ 08816

nmrk.com

Newmark, Licensed Real Estate Broker. The information contained herein has been obtained from sources deemed reliable but has not been verified and no guarantee, warranty or representation, either express or implied, is made with respect to such information. Terms of sale or lease and availability are subject to change or withdrawal without notice.

NEWMARK