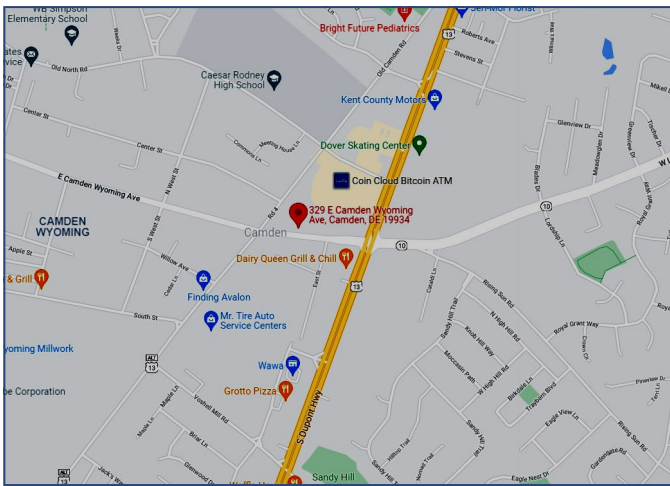


Flex Space For Lease



329 Camden Wyoming Ave.

Camden-Wyoming, DE



Property Information

- ⇒ 18,000+/-SF Warehouse Building
- ⇒ Lot Size: 0.23+/- Acre Lot
- ⇒ Listing Price: \$4,000 per month NNN

For more information contact:

Charles Rodriguez

302-674-3400

ccrod1@aol.com

All information contained herein is believed to be accurate, however was obtained from third parties and R & R Commercial Realty, Inc. does not warrant as to the accuracy submitted, subject to changes or modification without notice. Listing Broker represents the sellers interest.

R&R Commercial Realty

46 South State Street
Dover, Delaware 19901

www.RandRCommercialRealty.com

302-674-3400 (Office)

302-674-8479 (Fax)

Flex Space For Lease



329 Camden Wyoming Ave.

Camden-Wyoming, DE



For more information contact:

Charles Rodriguez

302-674-3400

ccrod1@aol.com

R&R Commercial Realty

46 South State Street
Dover, Delaware 19901

www.RandRCommercialRealty.com

302-674-3400 (Office)

302-674-8479 (Fax)

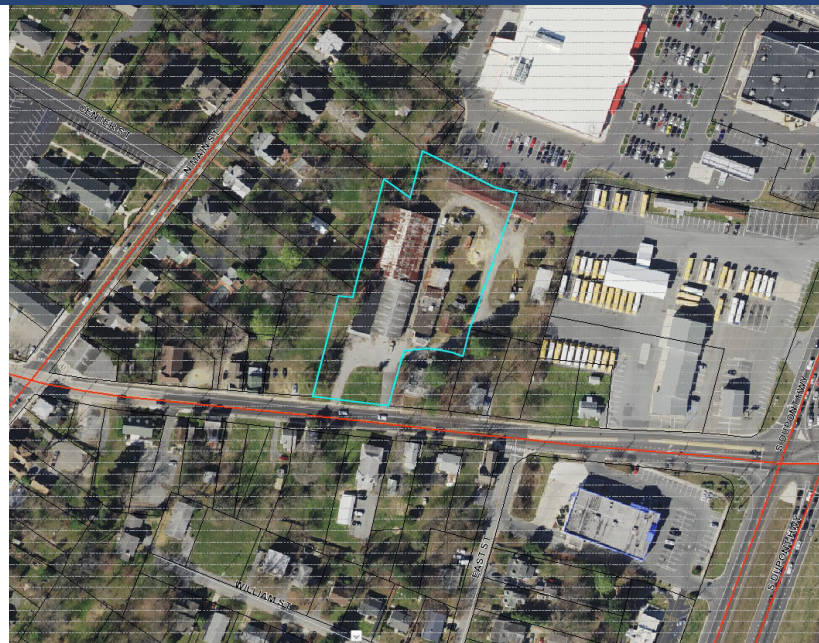
All information contained herein is believed to be accurate, however was obtained from third parties and R & R Commercial Realty, Inc. does not warrant as to the accuracy submitted, subject to changes or modification without notice. Listing Broker represents the sellers interest.

Flex Space For Lease



329 Camden Wyoming Ave.

Camden-Wyoming, DE



For more information contact:

Charles Rodriguez

302-674-3400

ccrod1@aol.com

All information contained herein is believed to be accurate, however was obtained from third parties and R & R Commercial Realty, Inc. does not warrant as to the accuracy submitted, subject to changes or modification without notice. Listing Broker represents the sellers interest.

R&R Commercial Realty

46 South State Street
Dover, Delaware 19901

www.RandRCommercialRealty.com

302-674-3400 (Office)

302-674-8479 (Fax)