



416 E. MAIN & OLD SAYBROOK RD. | MIDDLETOWN, CT

DEMOGRAPHICS

POPULATION

3 mile: 40,256

5 miles: 68,880

7 miles: 99,941

HOUSEHOLDS

3 mile: 16,280

5 miles: 28,536

7 miles: 41,028

AVG. HOUSEHOLD \$

3 mile: \$70,509

5 miles: \$81,861

7 miles: \$88,947



LEASING: 40,000 SF, 1,500 SF & UP TO 4,500 SF PAD

RARE IN-LINE AND PAD SPACE!

This location offers tremendous exposure to local residents, regional commuters and area students alike. With all that traffic every day, say "hello!" To thousands of potential customers!

CO-TENANTS: Super Stop & Shop, Marshall's, Dollar Tree & More!

GREAT SPACE!

A TRUE EXCLUSIVE... CALL FOR THE DETAILS!

AGENTS:

Dominick Musilli

203.529.4629 | dm@truecre.com

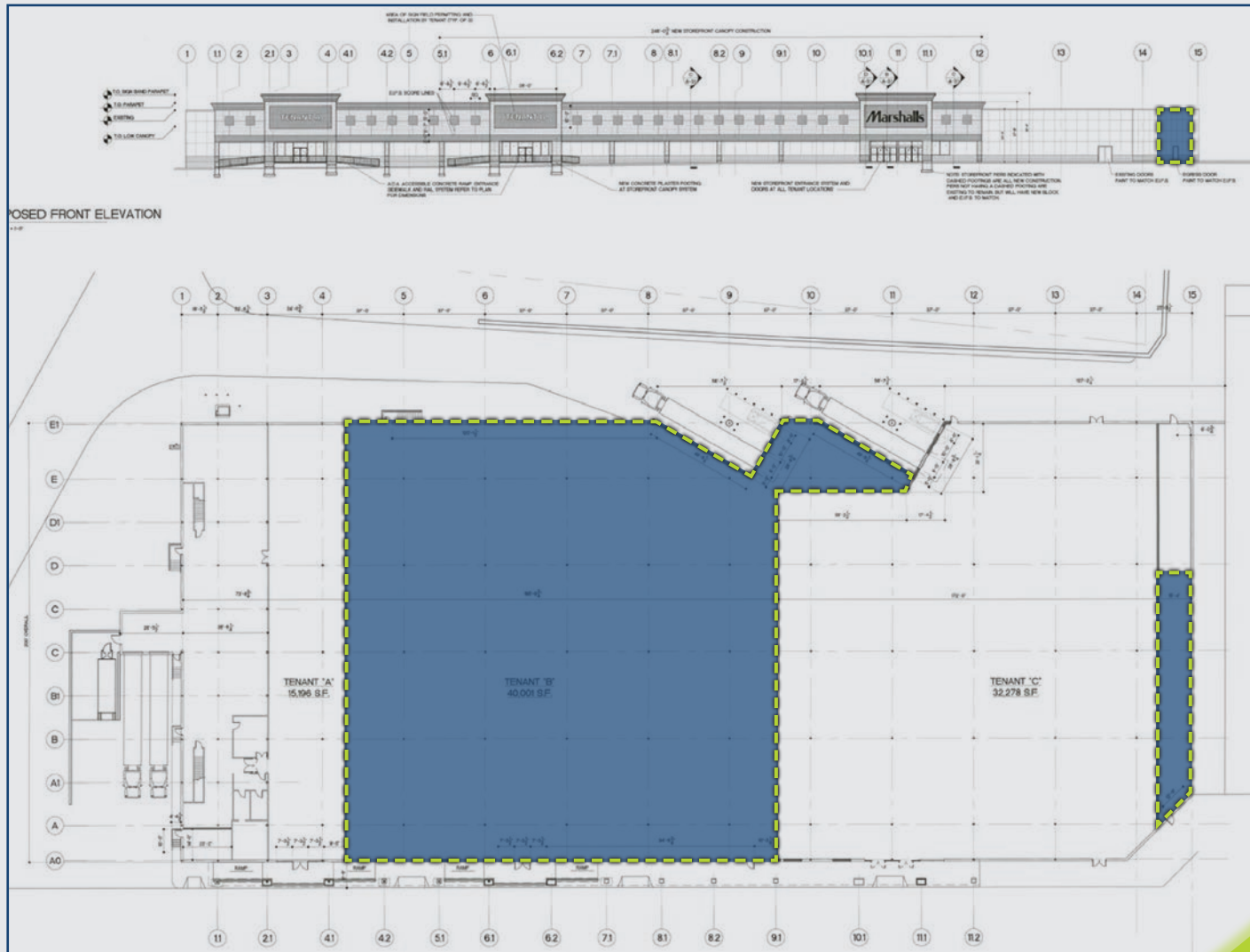
Joe Baranowski

203.762.6174 | jb@truecre.com

Richard Schneider

203.762.6173 | rs@truecre.com





1,500 SF FLOOR PLAN



416 E. MAIN & OLD SAYBROOK RD. | MIDDLETOWN, CT

Map showing the location of the site (416 E. Main & Old Saybrook Rd.) in Middletown, CT, surrounded by various retail and educational landmarks:

- Price Chopper
- STAPLES
- Marshall's
- Stop&Shop
- Dollar Tree Stores, Inc.
- THE HOME DEPOT
- WESLEYAN UNIVERSITY
- SITE**

