

**GE PROPERTY**

**佳 富 地 產**

# MEDICAL/OFFICE CONDO

223 N Garfield AVE. UNIT 205, Monterey Park



**\$550,000**



**Raymond Ho**

Vice President  
DRE# 01868322

Office (626) 458-9000

407 W. VALLEY BLVD, SUITE 4, ALHAMBRA, CA 91803  
WWW. GEPROPERTY.COM  
DRE# 01841262

**GE PROPERTY**

佳富地產



**223 N Garfield Ave unit 205,  
Monterey Park, CA 91754**

**Sales PRICE:** \$550,000  
**Office SIZE:** 1,479 SF  
**\$/SQFT:** \$ 372/SF  
Parking: 2 reserved spaces  
Year Built: 1986  
Association Fee: \$1,380/month



**Raymond Ho**  
Vice President  
DRE# 01868322

Office (626) 458-9000

407 W. VALLEY BLVD, SUITE 4, ALHAMBRA, CA 91803  
WWW. GEPROPERTY. COM  
DRE# 01841262

**OFFERING**

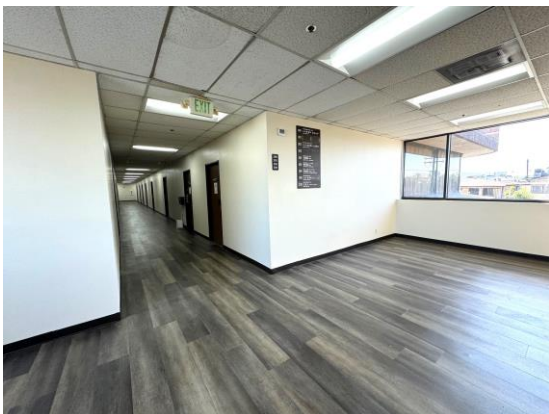
## **Garfield Medical Center**

- Corner Medical/Office Condo
- Located in the medical corridor near Garfield Medical Center.
- Spacious 1,479 SQFT Fully built out OBGYN medical office.
- 5 exam rooms with sink in each. Four 9'X10' and one 9'X13.5' exam rooms. 1 doctor's office, 1 lab room, waiting room 15'X 14', bathroom and kitchen break room. dual entry/exit.
- Central Air and Heating
- Bus Line
- Elevators

**GE PROPERTY**

佳富地產

**PHOTOS**



**Raymond Ho**

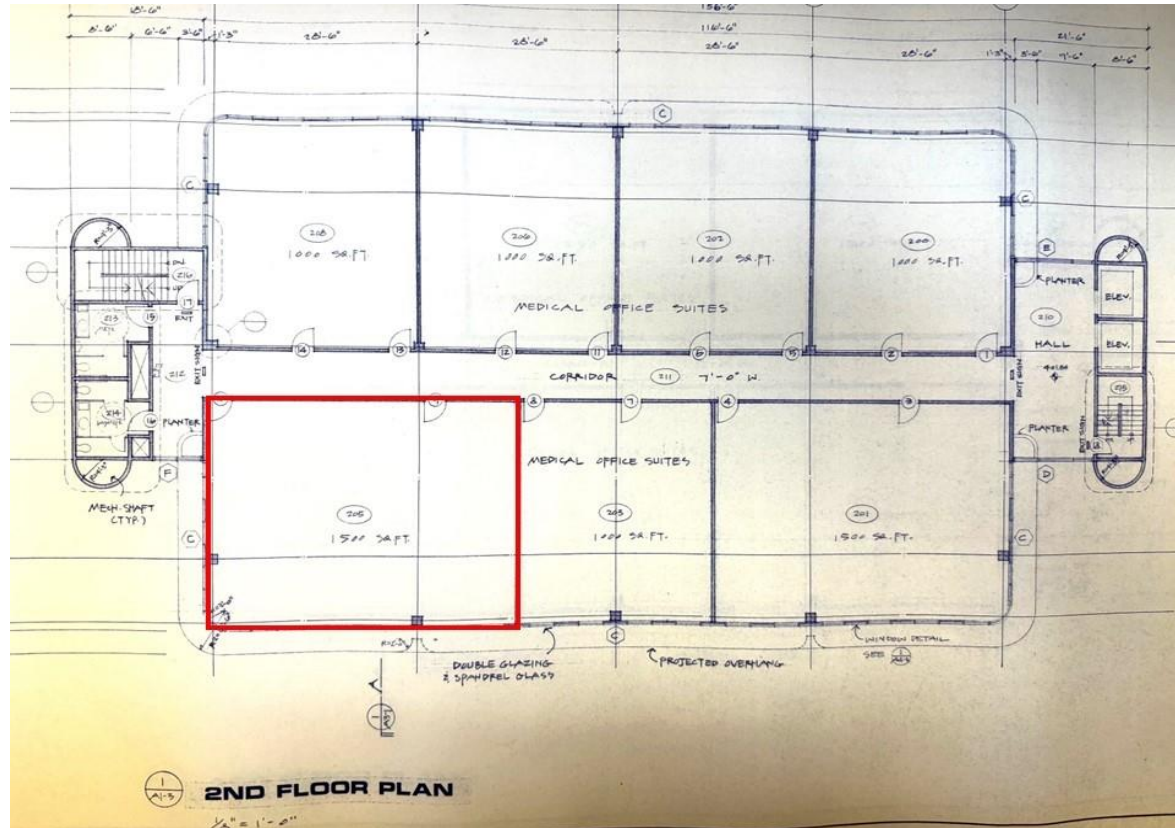
Vice President  
DRE# 01868322

Office (626) 458-9000

407 W. VALLEY BLVD, SUITE 4, ALHAMBRA, CA 91803

WWW.GEPROPERTY.COM

DRE# 01841262



**Raymond Ho**  
Vice President  
DRE# 01868322

Office (626) 458-9000

407 W. VALLEY BLVD, SUITE 4, ALHAMBRA, CA 91803  
WWW.GEPROPERTY.COM  
DRE# 01841262

# OUR COMPANY

For over 3 decades, GE Property Development, Inc. has provided real estate services for our clients in Los Angeles as well as our clients around the world. We provide a full array of real estate services in the areas of brokerage, development, leasing and management.

Our model is, "Let our results speak for themselves". We feel that our extensive portfolio speaks volumes about our experience and abilities.

Regardless of the real estate need, our firm can provide excellent service with one objective in mind; to meet our client's goals, expectations, and complete satisfaction. In doing so, we are able to increase revenues and decrease cost, demonstrating our unmatched reputation, professionalism, experience, and knowledge in the real estate industry.

GE Property Management, Inc. and its predecessor, Sun West Management, have served its investment clients as a full-service real estate company since 1983. Stephen Chan, the President and Founder of the firm, has been an active broker in the real estate field since 1977. The firm has acted as an acquisition consultant and broker for many local investors, foreign investors, and publicly-traded companies.



**Stephen Chan**  
**President and Founder**  
DRE# 00676562



**Raymond Ho**  
**Vice President**  
DRE# 01868322

**GE PROPERTY**

**佳 富 地 產**

## **CORPORATE HEADQUARTERS**

407 West Valley Boulevard, Suite 4 Alhambra, California 91803

Telephone: 626-458-9000  
Fax: 626-282-9777  
Website: [www.geproperty.com](http://www.geproperty.com)  
DRE# 01841262