

100 CONSTANTINE WAY

GREER, SC 29650

FOR SUBLEASE

\$23.00 PSF NNN

**TRINITY
PARTNERS**

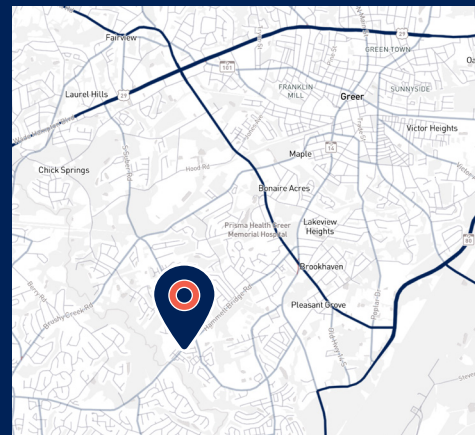
TRINITY-PARTNERS.COM
1 N. MAIN STREET, 4TH FLOOR
GREENVILLE, SC 29601

MEDICAL OFFICE



±5,000 SF Medical Office Space Available for Sublease

- Suite 100: ±5,000 SF
- ±3,300 SF downstairs & ±1,700 SF upstairs
- Brand new construction
- Turn key medical office space
- Lease exclusion for general dentist
- Zoning: PD-R
- Excellent for oral surgeon, periodontist, orthodontist, pediatric dentist, or general medical
- Six exam rooms, x-ray room, lab, nurse station, upstairs break room, laundry, offices and conference rooms
- Close proximity to Riverside High School & Greenville-Spartanburg International Airport



CONTACT

GRAYSON BURGESS, CCIM, SIOR
864.770.3288
GBURGESS@TRINITY-PARTNERS.COM

EDWARD WILSON, CCIM, SIOR, MCR
803.528.3574
EWILSON@TRINITY-PARTNERS.COM

The information contained herein was obtained from sources believed reliable; however, Trinity Partners makes no guarantees, warranties, or representations as to the completeness or accuracy thereof. The presentation of this property is submitted subject to errors, omissions, changes of price or conditions prior to sale or lease, or withdrawal without notice.



100 CONSTANTINE WAY

GREER, SC 29650

FOR SUBLEASE

\$23.00 PSF NNN

**TRINITY
PARTNERS**

TRINITY-PARTNERS.COM
1 N. MAIN STREET, 4TH FLOOR
GREENVILLE, SC 29601

CONTACT

GRAYSON BURGESS, CCIM, SIOR
864.770.3288
GBURGESS@TRINITY-PARTNERS.COM

EDWARD WILSON, CCIM, SIOR, MCR
803.528.3574
EWILSON@TRINITY-PARTNERS.COM

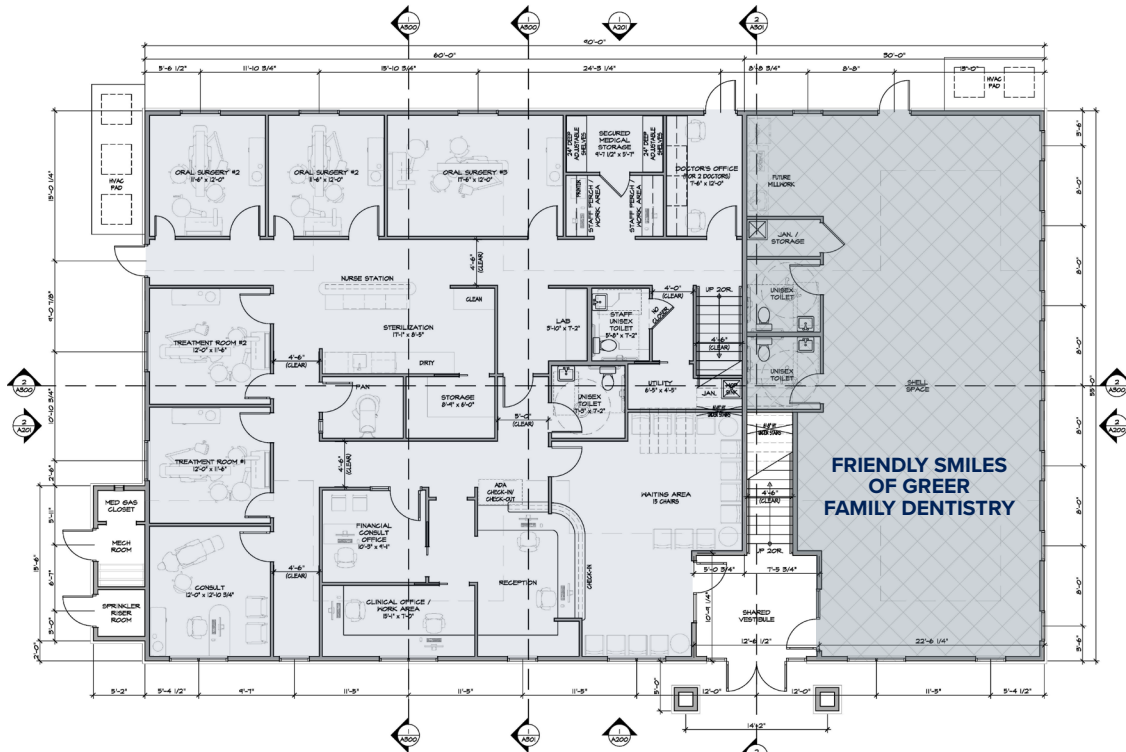
FLOOR PLANS

100 CONSTANTINE WAY

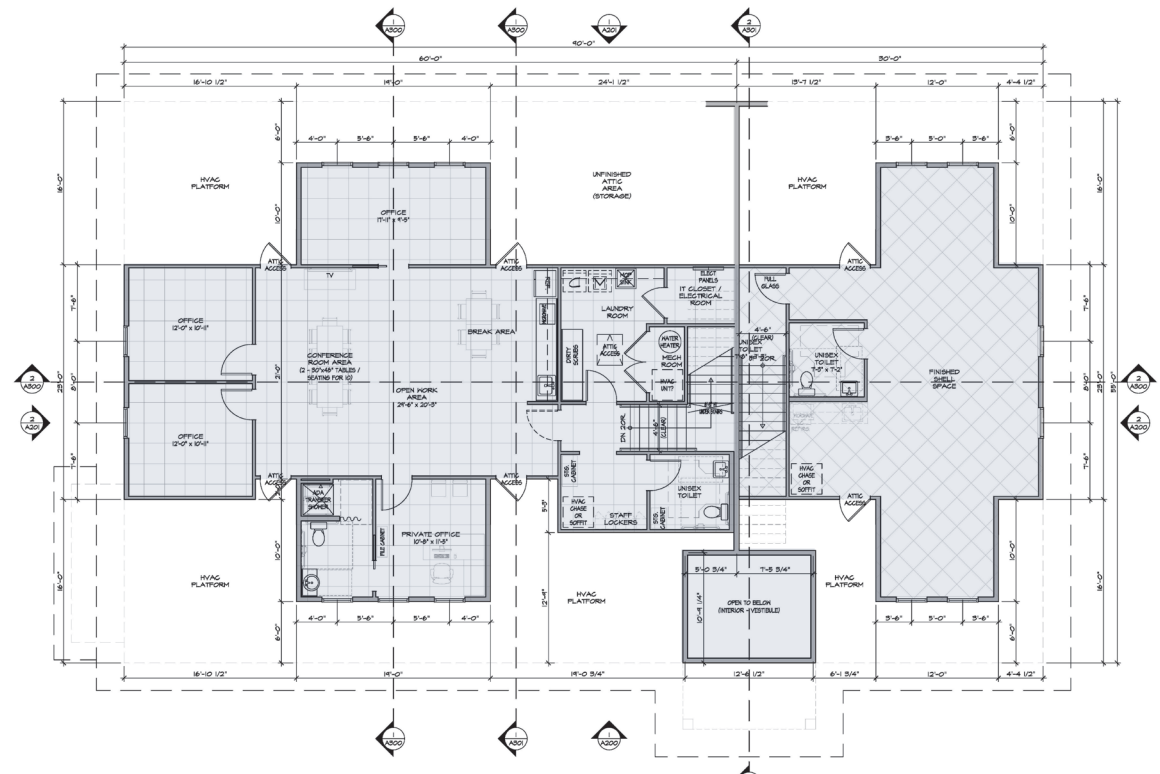
GREER, SC 29650

FOR SUBLEASE

\$23.00 PSF NNN



SECOND FLOOR ±1,700 SF



TRINITY PARTNERS

TRINITY-PARTNERS.COM
1 N. MAIN STREET, 4TH FLOOR
GREENVILLE, SC 29601

CONTACT

GRAYSON BURGESS, CCIM, SIOR
864.770.3288
GBURGESS@TRINITY-PARTNERS.COM

EDWARD WILSON, CCIM, SIOR, MCR
803.528.3574
EWILSON@TRINITY-PARTNERS.COM

LOCATION OVERVIEW

100 CONSTANTINE WAY

GREER, SC 29650

FOR SUBLEASE

\$23.00 PSF NNN

DEMOGRAPHICS	1 MILE	3 MILES	5 MILES
Total Population	8,160	56,282	125,426
Median Age	40.5	39.4	40.4
Total Households	3,087	22,180	50,631
# of Persons per HH	2.64	2.52	2.46
Average HH Income	\$129,129	\$112,027	\$104,880
Average House Value	\$338,881	\$323,417	\$315,957

Source: ESRI



**TRINITY
PARTNERS**

TRINITY-PARTNERS.COM
1 N. MAIN STREET, 4TH FLOOR
GREENVILLE, SC 29601

CONTACT

GRAYSON BURGESS, CCIM, SIOR
864.770.3288
GBURGESS@TRINITY-PARTNERS.COM

EDWARD WILSON, CCIM, SIOR, MCR
803.528.3574
EWILSON@TRINITY-PARTNERS.COM