

# AVAILABLE FOR LEASE

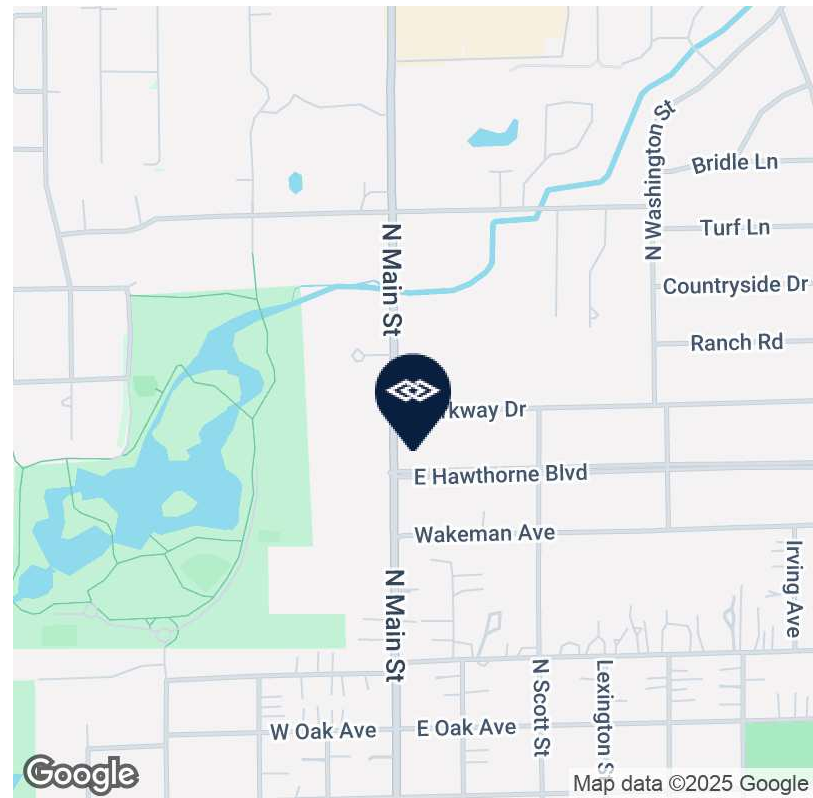
1501-1525 N. MAIN ST & 105-107 HAWTHORNE BLVD, WHEATON, IL 60187



AVAILABLE SPACES	LEASE RATE	SPACE SIZE
1517 N Main Street	\$20.00 SF/yr	1,634 SF

## PROPERTY HIGHLIGHTS

- Charming Main Street location
- Located between Roosevelt Road and Geneva Road
- Parking in front and rear
- Easy access. Traffic light at Main Street and Parkway Drive
- Zoned C-3 (General Business District)
- Traffic Volume: 12,900 vehicles per day



**MANDY LEWANDOWSKI** | Vice President | 630.993.3851 | [mandy@darwinpw.com](mailto:mandy@darwinpw.com)

970 N Oaklawn, Suite 100 | Elmhurst, IL 60126 | Tel: 630.782.9520 | [darwinpw.com](http://darwinpw.com)

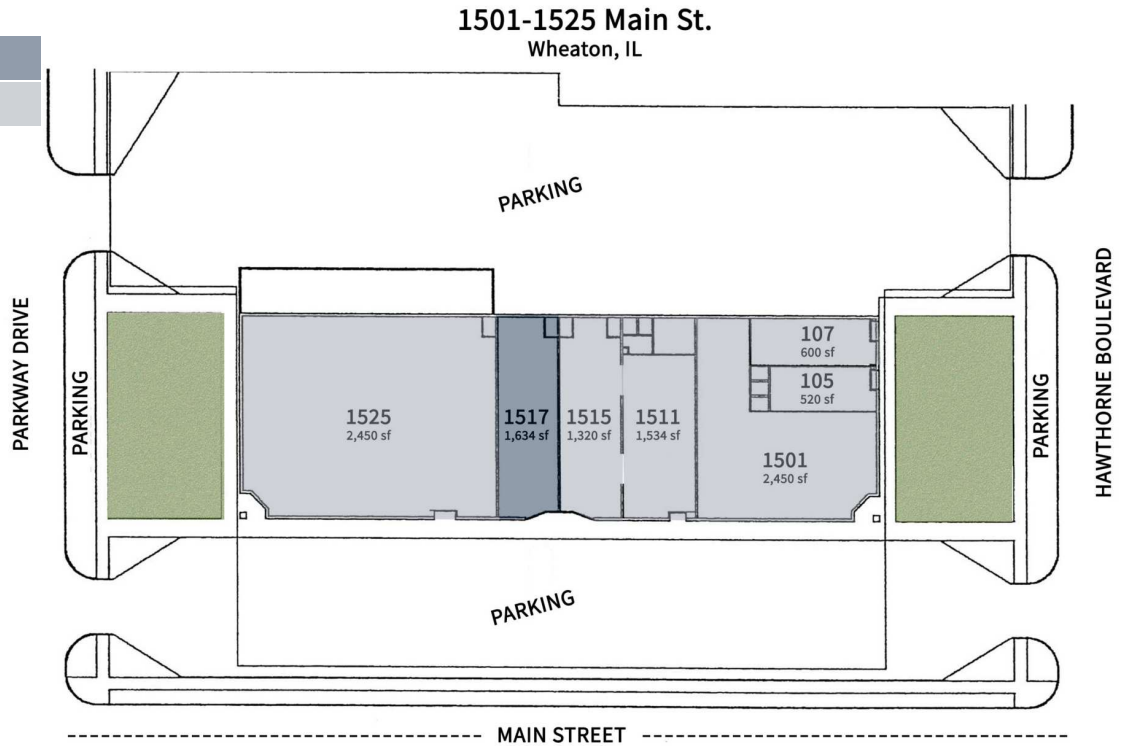
Submitted subject to error, change in status, or withdrawal without notice. Officers of this firm have an ownership interest in this property.

# AVAILABLE FOR LEASE

1501-1525 N. MAIN ST & 105-107 HAWTHORNE BLVD, WHEATON, IL 60187

## LEGEND

- Available
- Unavailable



## AVAILABLE SPACES

SUITE	TENANT	SIZE	TYPE	RATE
1517 N Main Street	Available	1,634 SF	Modified Gross	\$20.00 SF/yr