

# ±1,275 SF OFFICE CONDOMINIUM FOR SALE OR LEASE KEARNY MESA COMPLEX



8949 COMPLEX DRIVE, SUITE A  
SAN DIEGO, CA 92123

Greg Marx, SIOR  
Senior Vice President | Lic.# 01940696  
858.458.3302 | gmarx@voitco.com

Carter Shannon  
Associate | Lic.# 02244724  
858.458.3303 | cshannon@voitco.com

**Voit**  
REAL ESTATE SERVICES



# PROJECT FEATURES

- ±1,275 SF Office Condominium
- Second Story Suite
- Quality Interior Improvements
- Balcony
- Central Kearny Mesa Location
- Part of the Kearny Mesa Complex Business Park
- Easy access to Highways 52, 163 and Interstates 15 and 805
- Available Immediately

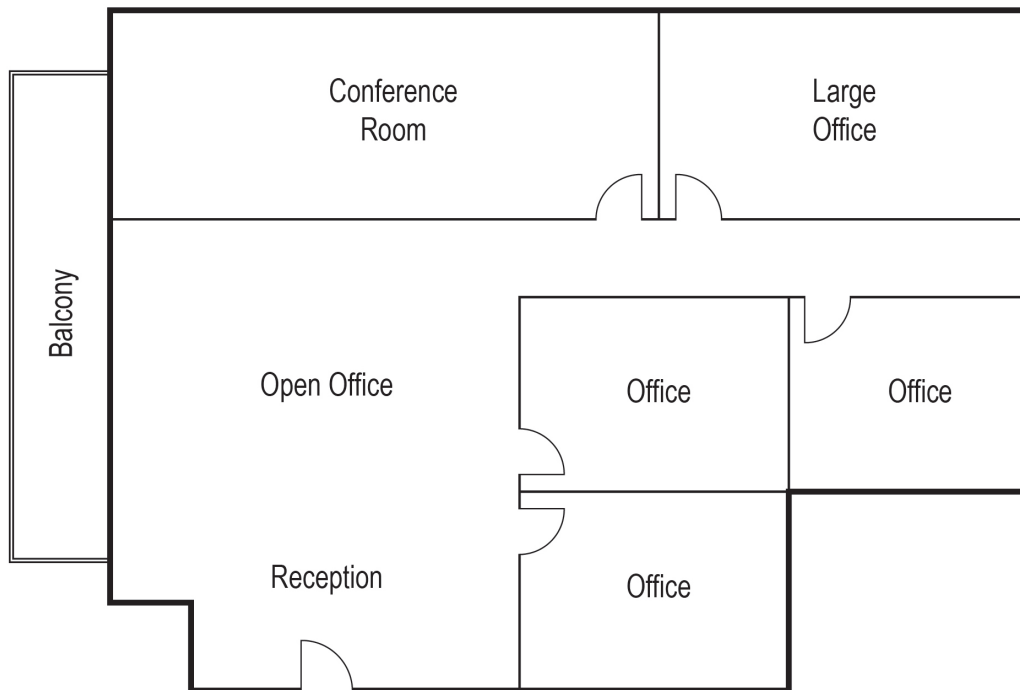
**LEASE RATE: \$1.95/SF GROSS + E**

**SALE PRICE: \$595,000 (\$467/SF)**



# FLOOR PLAN

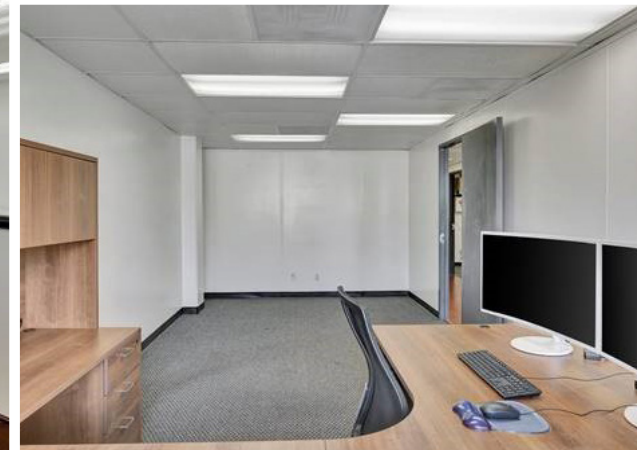
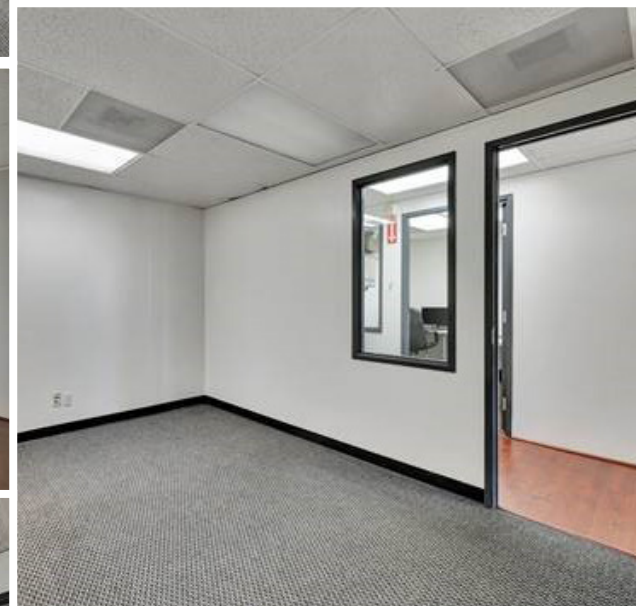
8949 COMPLEX DRIVE  
SUITE A



SIZE:	1,275 SF
LEASE RATE:	\$1.95 PSF Gross
SALE PRICE:	\$595,000 (\$467/SF)
AVAILABLE:	Immediately
TO SHOW:	Appointment. Call Broker.
COMMENTS	100% Office









# 8949 COMPLEX DRIVE SUITE A

SAN DIEGO, CA 92123

## ***Voit***

REAL ESTATE SERVICES

**Greg Marx, SIOR**

Senior Vice President | Lic.# 01940696  
858.458.3302 | gmarx@voitco.com

**Carter Shannon**

Associate | Lic.# 02244724  
858.458.3303 | cshannon@voitco.com

4180 La Jolla Village Drive, Suite 100  
La Jolla, CA 92037

Lic.#01991785 | [www.voitco.com](http://www.voitco.com)

Licensed as Real Estate Salespersons by the CA Bur of Real Estate.

©2025 Voit Real Estate Services, Inc. All Rights Reserved.  
The information contained herein has been obtained from sources we deem reliable. While we have no reason to doubt its accuracy, we do not guarantee it.

