

# VIEW POINTE BUSINESS PARK

SUITE 220 | 1880 W. JUDITH LANE | BOISE, ID 83705

SALE PRICE  
**\$575,000**

**CONTACT**



**PAT SHALZ SIOR**

208.947.0834

pat@tokcommercial.com

**LANCE HENDRICKS**

208.957.5623

lance@tokcommercial.com

**HIGHLIGHTS**



Class A Southeast Boise Condo For Sale | Second Floor

Ample on-site parking

Move in ready | All existing furniture included

Ideal for many professional uses including general office and medical

Located in premier business park - View Pointe Business Park

Professional neighboring tenants

Multiple service providers available – Syringa and Integra

**DETAILS**



**SALE PRICE:** \$575,000

**RATE:** \$288.365F

**SUBMARKET:** Southwest Boise

**BLDG TYPE:** Class A Office

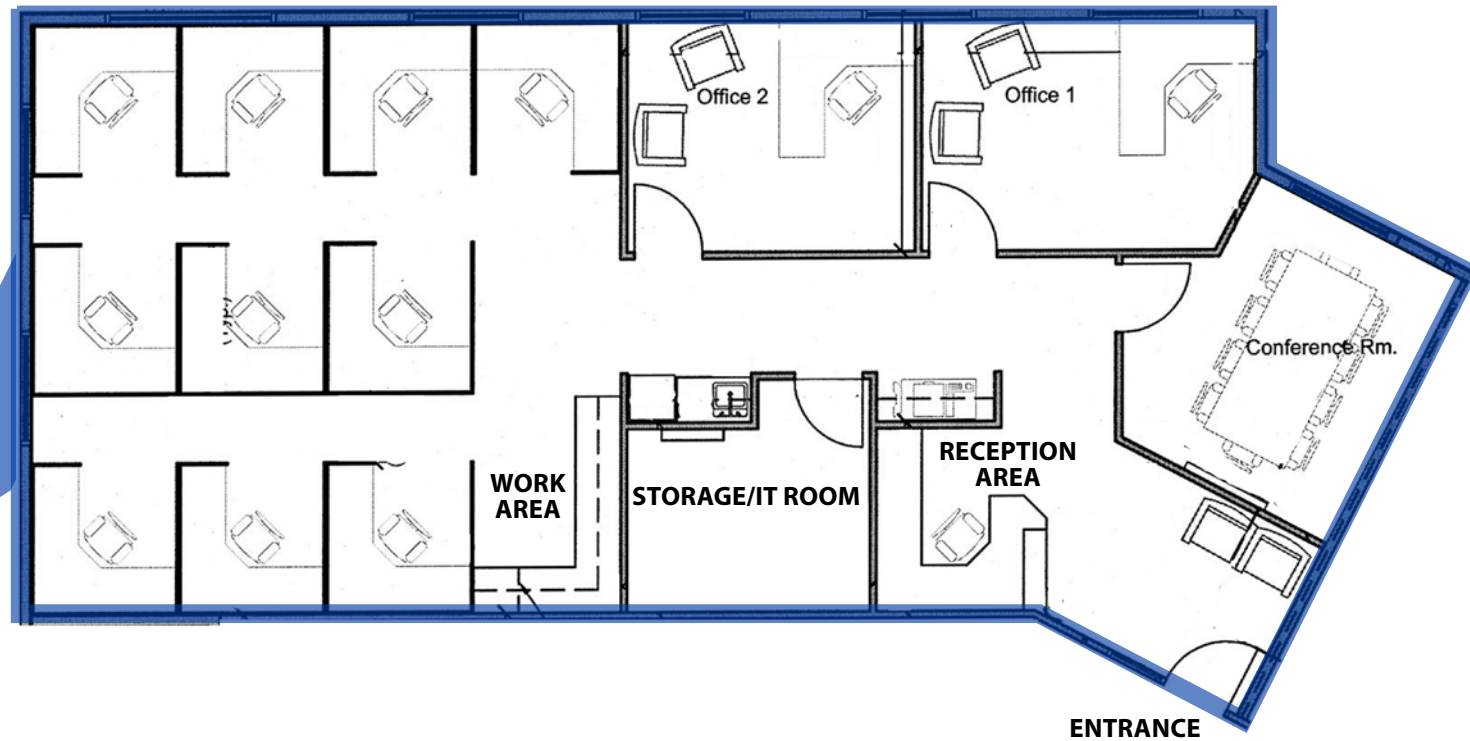
**CONDO SIZE:** 2,008 SF

**PARKING:** Ample

**ZONING:** MX-3

# FLOOR PLAN

## SUITE 220: 2,008 SF

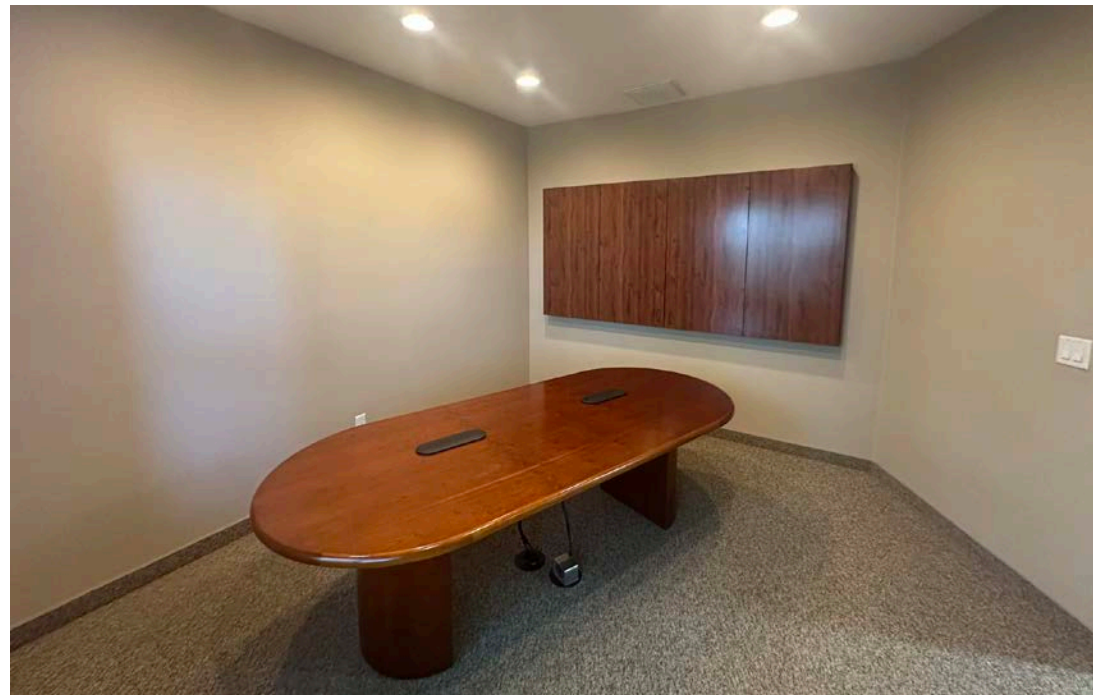


1880 W Judith Ln

Federal Way

## View Pointe Business Park

Overland Road



**SITE**

TERRY DAY PARK

FEDERAL WAY

W OVERLAND RD



# TOK

COMMERCIAL

