

**RIVERPORT**

**SW 15TH  
& PORTLAND**



# RIVERPORT

## SW 15TH & PORTLAND



### Listed by:



**Ryan Motsinger**  
**Broker Associate**  
LICENSE #174636  
(405) 513-1299  
ryan@solasre.com

**Solas Real Estate**  
204 N Robinson #1700  
Oklahoma City, OK 73102



### Disclaimer:

This material is provided for information purposes only. It is from sources believed to be reliable. However, Solas Real Estate makes no warranties or representations, expressed or implied, as to the accuracy or sufficiency of the information.

It is presented subject to errors, omissions, changes or withdrawal without notice. Square footage is provided by the local County Assessor or the Owner. Photos and graphics with copyrights by Costar, Google, Solas Real Estate and independent contractors are used with permission.

# PROPERTY HIGHLIGHTS

- PROPERTY HIGHLIGHT
- PROPERTY SUMMARY
- AERIAL MAP



# PROPERTY HIGHLIGHTS

**Proximity to Airport:**

Just 4.4 miles away, only a 10-minute drive for travelers.

**Close to Bricktown/Downtown:**

Only 5.8 miles from the vibrant Bricktown and Downtown area.

**Surrounding Amenities:** Close to a variety of restaurants, hotels, and shopping options, enhancing appeal for potential tenants and customers.

**Convenient Access:**

Easy access to major highways I-44 and I-40, ensuring excellent connectivity.

**Convenient Location:** Surrounded by a variety of restaurants, hotels, and shopping options.



# PROPERTY SUMMARY

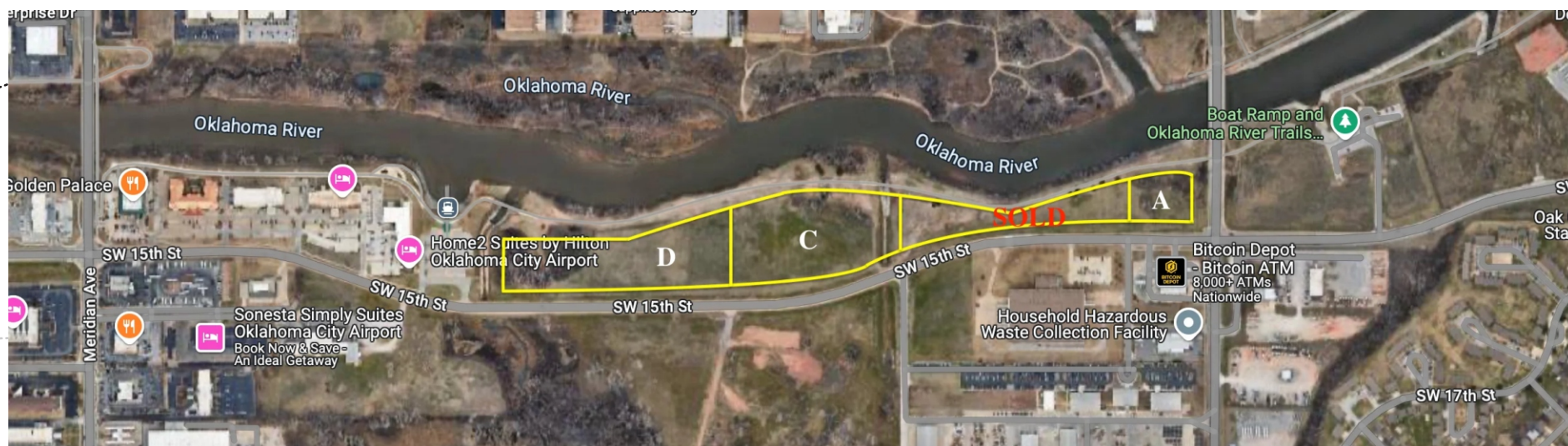
## LIST PRICES

A- 2 acres	<b>\$1,356,000</b>
C- 5.7 acres	<b>\$1,194,000</b>
D- 8.8 acres	<b>\$1,740,000</b>

Seize the opportunity to invest in 1 of 3 tracts of prime commercial land, each zoned for a wide range of uses under PUD 1417. With versatile zoning allowing for multi-family, hospitality, retail, restaurant, office, and more, this property offers immense potential for developers and investors alike. ALTA was just completed in June. Located just 10 minutes from the airport, these tracts benefit from excellent visibility and accessibility, making them ideal for businesses catering to travelers and locals. A STR report is available for interested hospitality ventures, providing insights into the lucrative short-term rental market.

The area is rapidly developing, with new townhomes close to going under construction nearby, enhancing the local population and demand for amenities. Additionally, the property is adjacent to the river cruise dock, offering a unique attraction for visitors and residents.

Positioned close to Meridian Ave, this prime location ensures high foot traffic and visibility. Don't miss this chance to capitalize on a versatile commercial space in a thriving area. Contact us today for more details!



# AERIAL MAPS



RIVERPORT / SW 15TH & PORTLAND

# RIVERPORT

## SW 15TH & PORTLAND

### Listed by:



**Ryan Motsinger**  
**Broker Associate**  
LICENSE #174636  
(405) 513-1299  
ryan@solasre.com

**Solas Real Estate**  
204 N Robinson #1700  
Oklahoma City, OK 73102



### Disclaimer:

This material is provided for information purposes only. It is from sources believed to be reliable. However, Solas Real Estate makes no warranties or representations, expressed or implied, as to the accuracy or sufficiency of the information.

It is presented subject to errors, omissions, changes or withdrawal without notice. Square footage is provided by the local County Assessor or the Owner. Photos and graphics with copyrights by Costar, Google, Solas Real Estate and independent contractors are used with permission.