

1080-1088 Yonge

**Retail & Office Opportunity for Sale
in the Heart of Summerhill**

At Yonge Street and Roxborough Street West



CBRE

Retail & Office Opportunity for Sale

Address: 1080-1088 Yonge Street, Toronto (One Roxborough West Condo)
Parking: 13 parking spaces total
Available: January 2027

Ground Floor Retail *

Unit:	Size:	Frontage:	Asking Price
Retail A:	3,064 sq. ft. + patio	115 ft. (wraparound)	<i>Conditionally Sold</i>
Retail B:	753 sq. ft.	22 ft.	\$1,599,000
Retail C:	1,475 sq. ft.	20 ft.	\$2,599,00
Retail B & C:	2,228 sq. ft.	42 ft.	\$4,000,000

Ground floor ceiling heights range from 15 ft - 17 ft.

Second Floor Office*

Size:	Asking Price
7,296 sq. ft. (divisible) + 261 sq. ft. ground level lobby	\$9,999,999

Second floor ceiling height is 12 ft.

Property Highlights

- Located in the podium of One Roxborough West condominium
- Second floor unit has dedicated office lobby & elevator accessed from P1 and Yonge Street
- Incredible Summerhill location at the corner of Yonge Street & Roxborough Street West
- Steps from Rosedale subway station
- Neighbouring retailers include James Perse, Pantry, Gee Beauty, Smythe, The Narwhal, The Latest Scoop, Greenhouse Juice, Thursdays, Terroni and many more

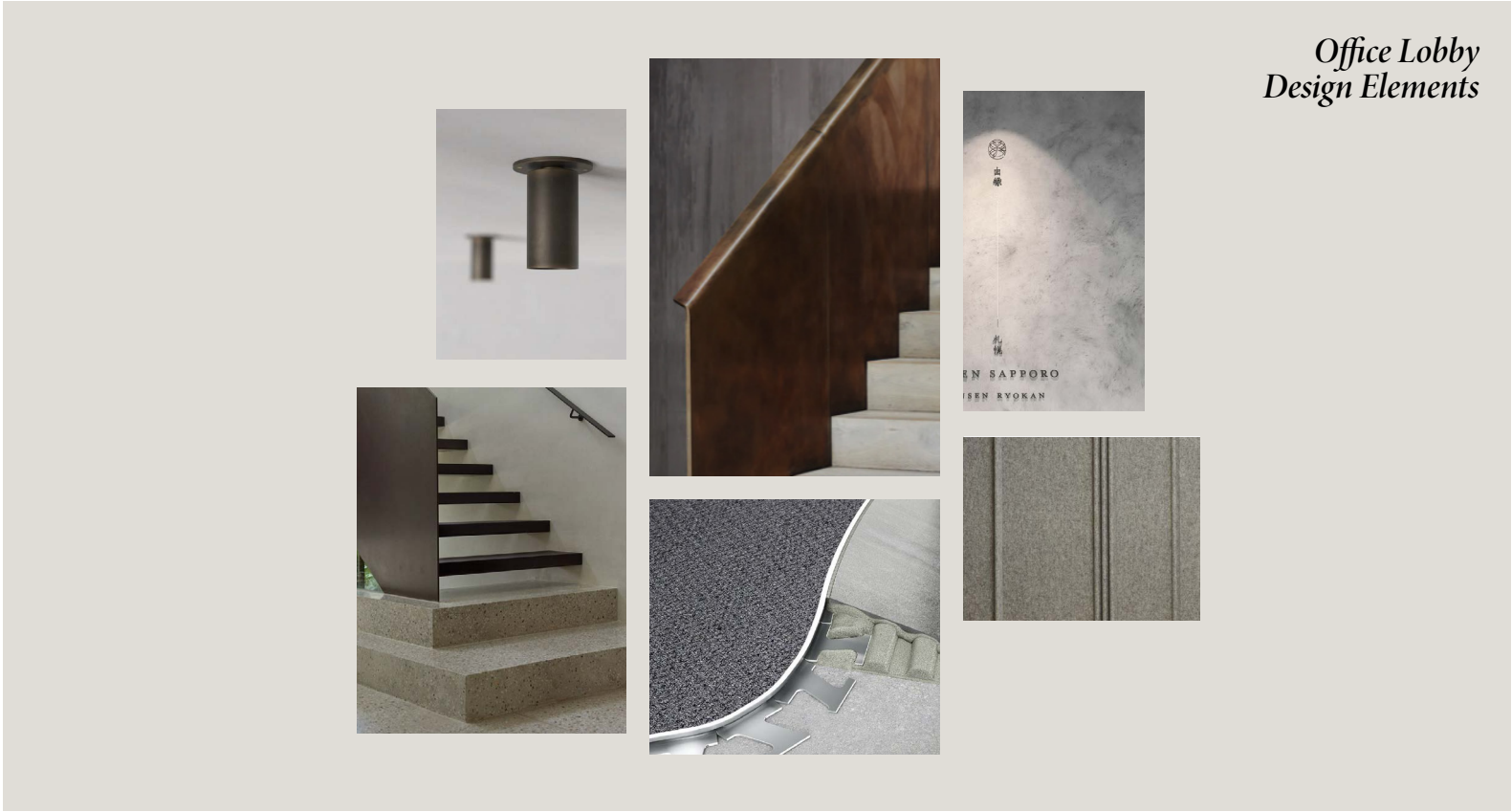
*Sizes are approximate



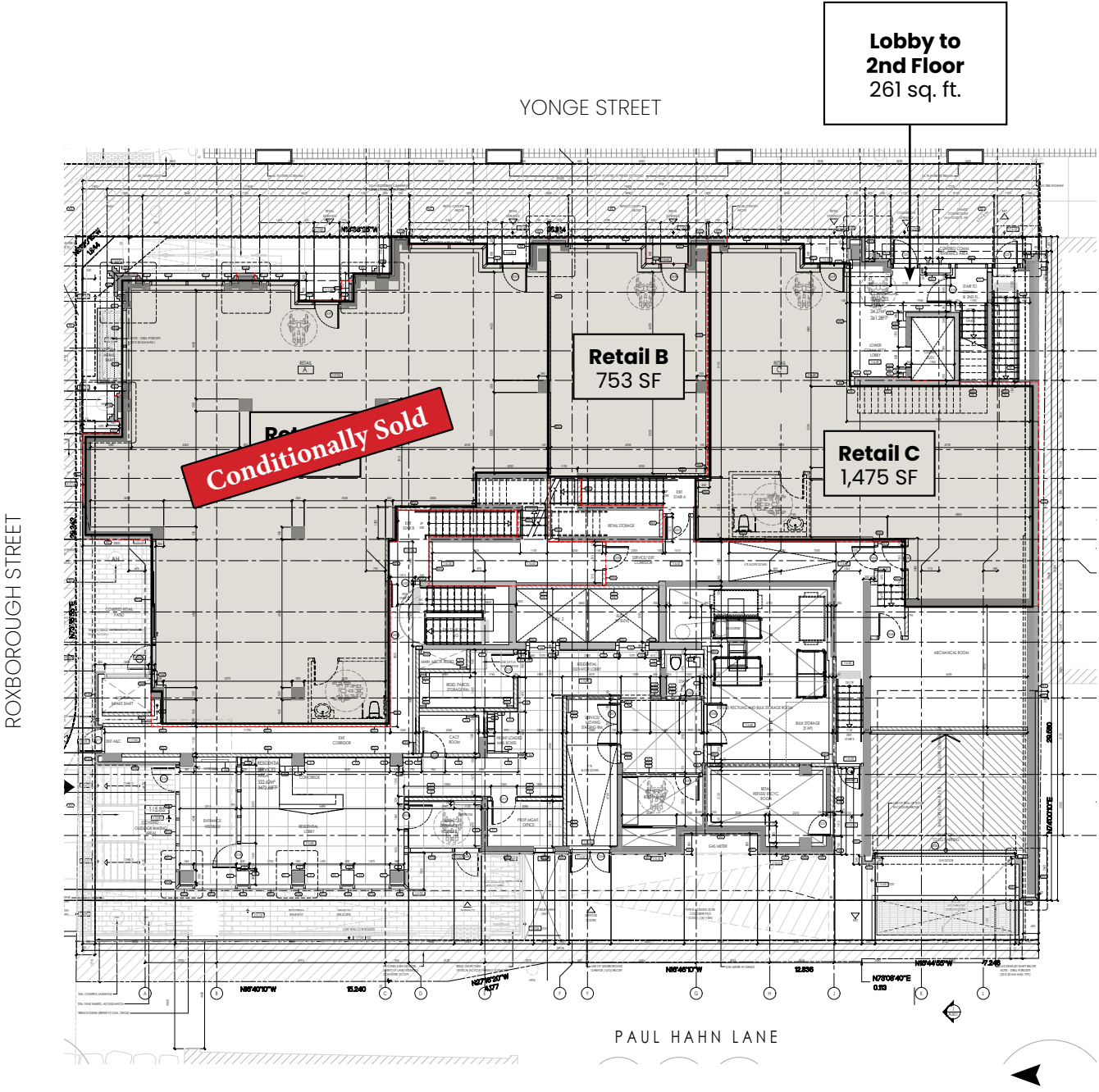


View of 1 Roxborough Street West from Roxborough Street East

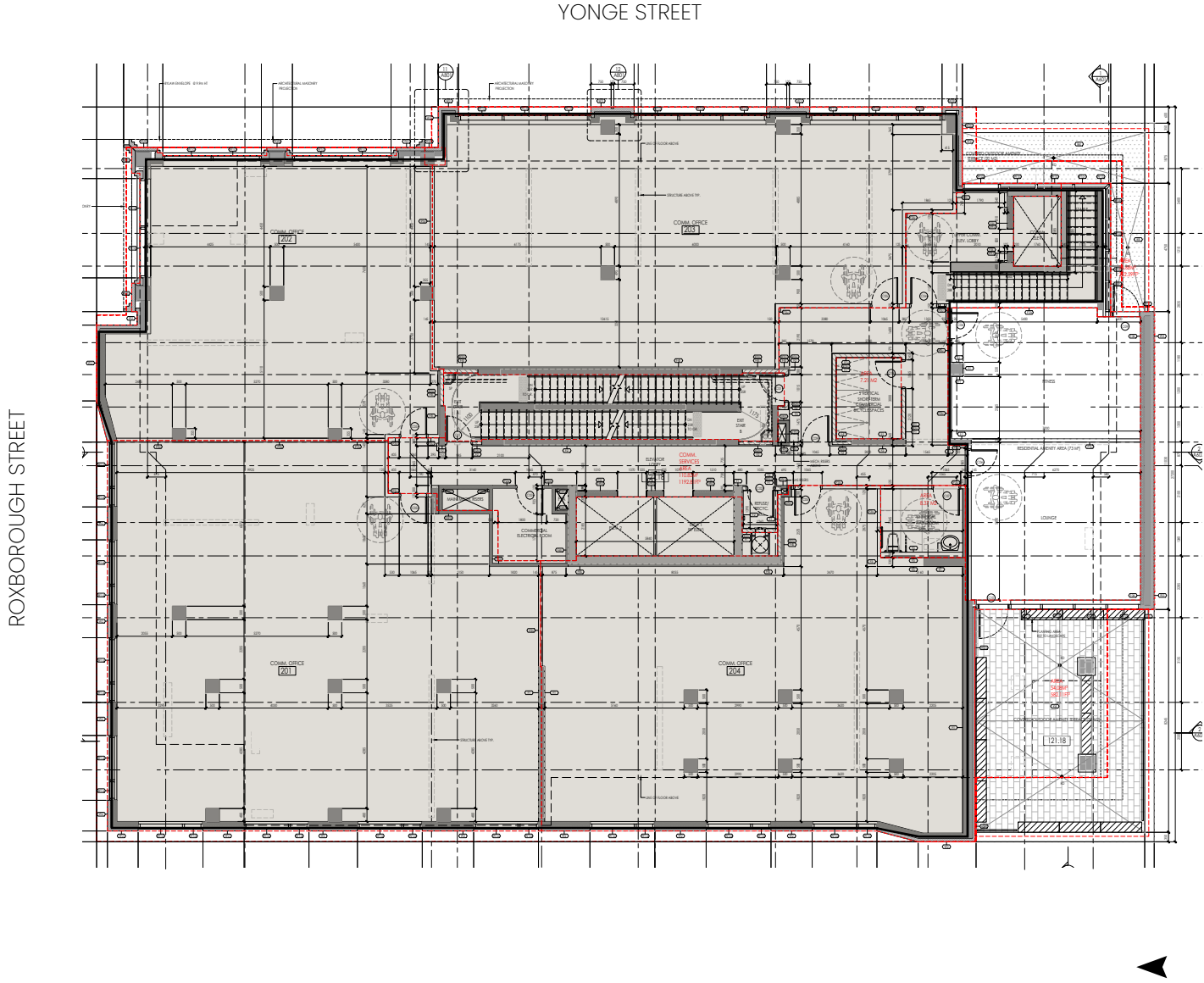
Dedicated Ground Level Office Lobby



Ground Level Floor Plan
~ 5,292 sq. ft.



Second Level Floor Plan
~ 7,296 sq. ft.



WOODLAWN AVE



UMAMI POKE
NUTBAR
WAXON WAXBAR

WALKER AVE



FORMULA FIG
TUCK SHOP TRADING CO.
IMPACT KITCHEN

ALCORN AVE



SPINCO
ULTIMATE ATHLETICS
BOXCAR SOCIAL

BIRCH AVE



WALKING ON A CLOUD
ROSEDALE DINER
SORREL RESTAURANT
SQUINT EYEWEAR
CANADA TRUST

MARLBOROUGH AVE



SHOP THURSDAYS
FARROW AND BALL
THE NARWAL
ROGERS

MACPHERSON AVE



THE LOBBY BY HEAPS ESTRIN
QUANTO BASTA
THE LATEST SCOOP
ELLIE MAE
GEE BEAUTY
PANTRY

ROXBOROUGH STREET W

SUBJECT PROPERTY



JAMES PERSE
THE REBEL HOUSE
PAUL HAHN & CO

GIBSON AVENUE

CLEMENTINE'S BOUTIQUE

RAMSDEN PARK

FRAN AND CO.

SUMMERHILL AVE

D&E LAKE LTD. FINE ARTS

GERRY WEBER



MEPHISTO SHOES

SHARELIFE



SUMMERHILL
SUBWAY STATION

SHAFTESBURY AVE

MASTERMIND TOYS

SASH
LCBO



SCRIVENER SQUARE

THE JAMES CONDO

HARVEST WAGON

NADEGE

TERRONI



PRICE STREET

SLEEP COUNTRY
RUNNING ROOM
SHELL



ROWANWOOD AVE

AUGUSTINA BOUTIQUES

ROSEDALE HEALTH

THE QUAIL

BLACK SHEEP BURGER

TOTUM LIFE SCIENCE



ROXBOROUGH STREET E

MINERAL

SHOPPERS DRUG MART

DOG FATHER

BLACK CAMEL



CRESCENT ROAD



ROSEDALE SUBWAY STATION





Advisory Team

Arlin Markowitz*

Executive Vice President
416 815 2374
arlin.markowitz@cbre.com

Alex Edmison*

Senior Vice President
416 874 7266
alex.edmison@cbre.com

Jackson Turner**

Senior Vice President
416 815 2394
jackson.turner@cbre.com

Teddy Taggart*

Vice President
416 847 3254
teddy.taggart@cbre.com

*Sales Representative **Broker

CBRE urban retail team

This disclaimer shall apply to CBRE Limited, and to all divisions of the Corporation ("CBRE"). The information set out herein (the "Information") has not been verified by CBRE, and CBRE does not represent, warrant or guarantee the accuracy, correctness and completeness of the Information. CBRE does not accept or assume any responsibility or liability, direct or consequential, for the Information or the recipient's reliance upon the Information. The recipient of the Information should take such steps as the recipient may deem necessary to verify the Information prior to placing any reliance upon the Information. The Information may change and any property described in the Information may be withdrawn from the market at any time without notice or obligation to the recipient from CBRE.