



For Lease

Prime Downtown Location

50 S Meridian Street
Indianapolis, IN

Renovations Complete

Property Highlights

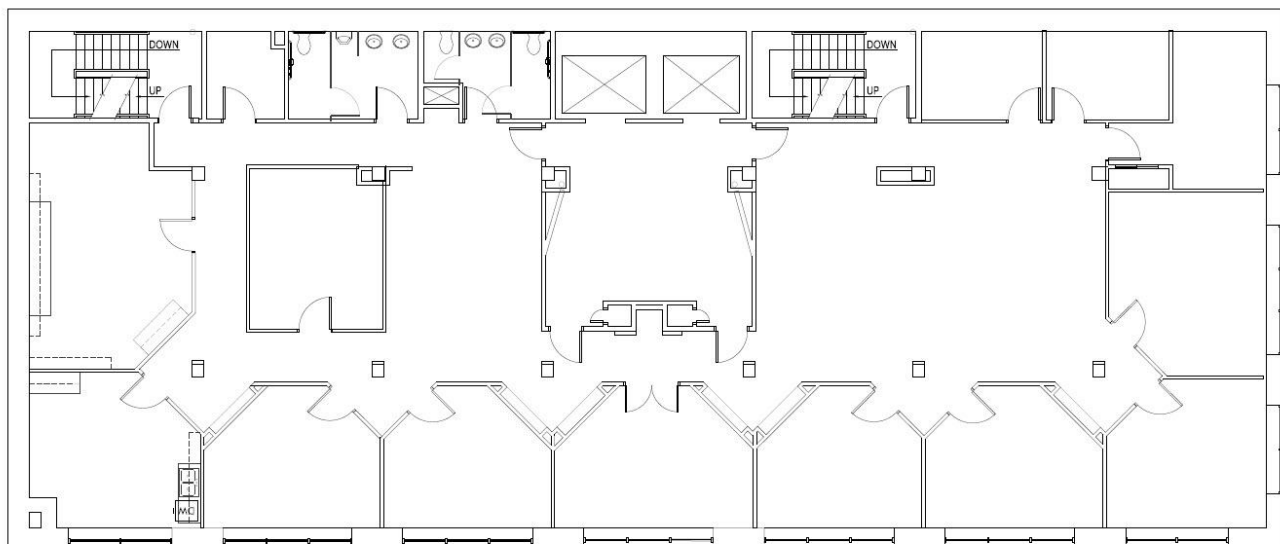
- ± 47,000 SF office building – 8 floors plus Lower Level
- ± 2,600 SF available for lease
- 2-story atrium
- Exterior signage available
- Excellent transportation connectivity:
 - Located on IndyGo bus line
 - Numerous bike lanes
 - Walking distance to new Mass Transit Center
 - Quick + easy access to I-70, I-65, + I-465
- Numerous parking options in close proximity
- Nearby: Monument Circle, Circle Centre Mall, Convention Center, State Capitol and Government Center, Gainbridge Fieldhouse
- Unbeatable amenity base (lodging/dining)

Itamar cohen
317 513 5202
5135202@gmail.com

CONNECTED
TO
EVERYTHING!



Floorplate + Property Information



Typical Floorplate

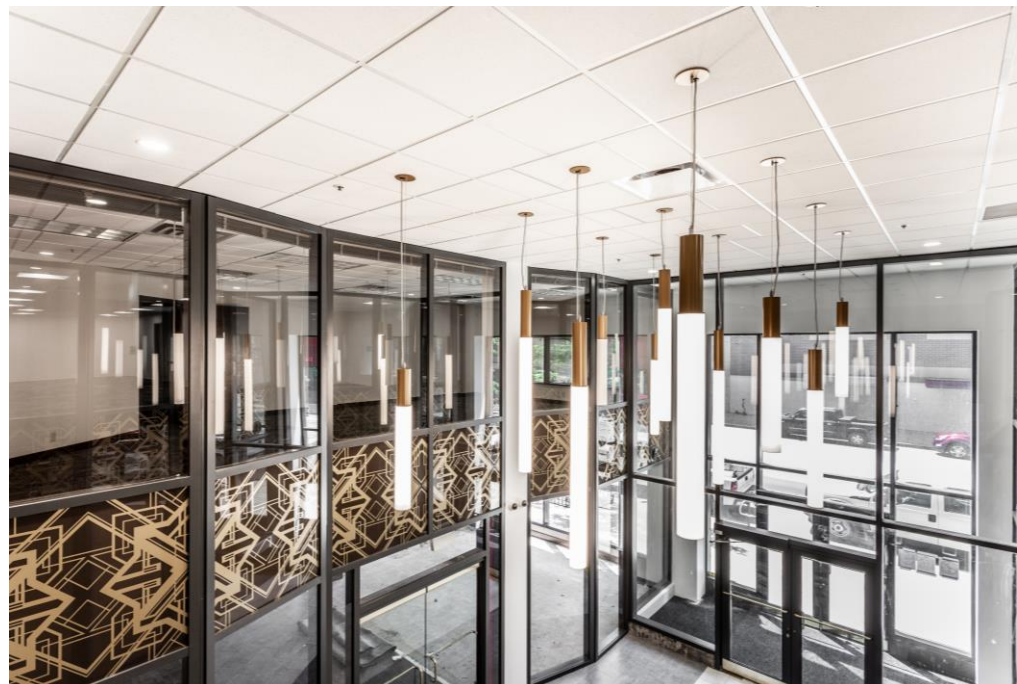
Elevators	2 passenger
Access	Fob security system with 24/7 access. Secured building with camera monitoring.
Data	High speed on-site
Year Built	1985 with extensive renovations complete
Restrooms	Central
Zoned	C3
Misc.	Janitorial / Maintenance / Recycle Program

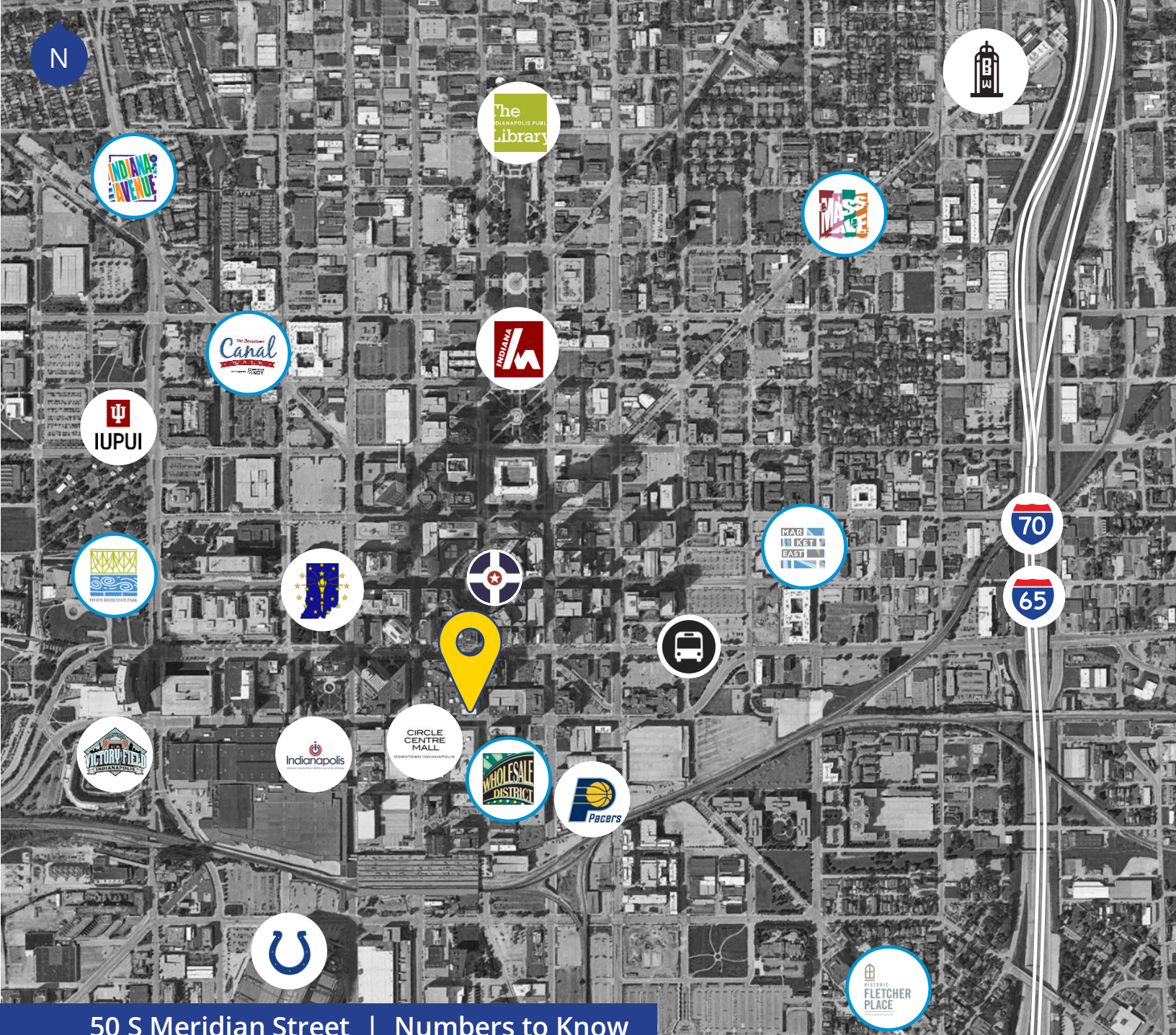
Gallery

A 2-story atrium greets you //
Architectural detail // Strong
natural light floods the
atrium // 2nd floor spec suite
overlooks atrium



INCREDIBLE
CONNECTIVITY
TO COMMUTER
MODES +
AMENITIES!





50 S Meridian Street | Numbers to Know

7

Entertainment + Sport Venues

40+

Dining Options

5

Art + Theatre Venues

18+

Hotels + Lodging Options

97

Bike Score

97

Walk Score

69

Transit Score

